

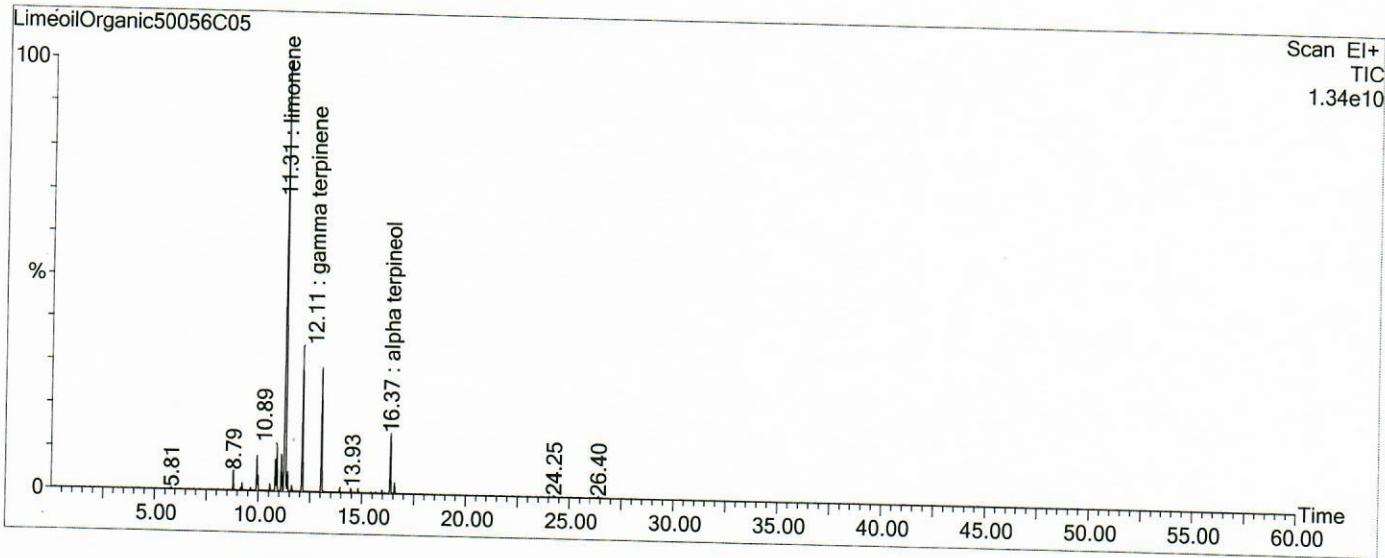
SANCTUS ESSENCE

GCMS Analysis Report

File: C:\TURBOMASS\DEFAULT.PRO\Data\LimeoilOrganic50056C05.raw
 Acquired: 13-Feb-19 05:48:44 PM
 GC/MS Method: GC: LemonMS.mth MS: LemonMS.EXP

Printed: 03-Apr-19 04:12 PM

Page 1 of 1
 Vial Number: 12



#	RT	Area	Area %	Name
1	11.103	55,531,540.0	3.632	p cymene
2	11.308	703,908,160.0	46.040	limonene
3	12.113	180,254,944.0	11.790	gamma terpinene
4	13.048	166,694,720.0	10.903	terpinolene
5	16.375	83,436,848.0	5.457	alpha terpineol

ACQUISITION PARAMETERS

Oven: Initial temp 75°C for 0 min, ramp 4°C/min to 220°C, hold 30 min, InjAauto=250°C, Volume= 1µL, Split=100:1, Carrier Gas=He, Solvent Delay=0.00 min, Transfer Temp=210°C, Source Temp=200°C, Scan: 50 to 300Da, Column 60.0m x 250µm Elite-5 Column

Percentages are only indicative of relative peak ratios on the chromatogram and not of their concentration in the sample. Products may contain non-volatile materials. Furthermore, GCMS response factors vary more than for responses measured in GCFID and ratios comparisons should be considered carefully.