

SANCTUS ESSENCE

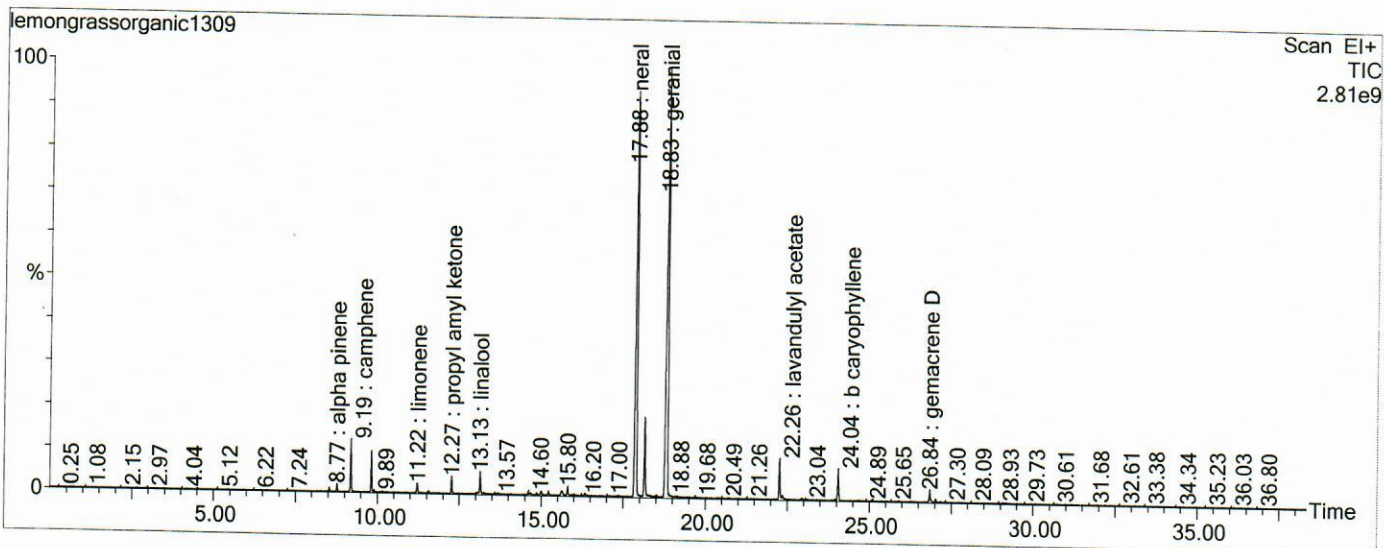
GCMS Analysis Report

File: C:\TURBOMASS\DEFAULT.PRO\Data\lemongrassorganic1309.raw
 Acquired: 01-Feb-19 03:37:55 PM

Printed: 03-Apr-19 04:03 PM

GC/MS Method: GC: LemonMS.mth MS: LemonMS.EXP

Page 1 of 1
 Vial Number: 51



#	RT	Area	Area %	Name
1	9.192	11,186,190.0	2.329	camphene
2	9.817	8,186,670.5	1.704	6methyl5heptene2one
3	12.268	3,706,744.5	0.772	propyl amyl ketone
4	13.134	4,708,650.5	0.980	linalool
5	17.880	153,141,312.0	31.878	neral
6	18.150	20,861,112.0	4.342	nerol
7	18.826	168,528,944.0	35.081	geranial
8	22.257	10,199,757.0	2.123	lavandulyl acetate
9	24.043	7,683,886.0	1.599	b caryophyllene
10	26.839	3,418,489.8	0.712	gemacrene D

ACQUISITION PARAMETERS

Oven: Initial temp 75°C for 0 min, ramp 4°C/min to 220°C, hold 30 min, InjAauto=250°C, Volume= 1µL, Split=100:1, Carrier Gas=He, Solvent Delay=0.00 min, Transfer Temp=210°C, Source Temp=200°C, Scan: 50 to 300Da, Column 60.0m x 250µm Elite-5 Column

Percentages are only indicative of relative peak ratios on the chromatogram and not of their concentration in the sample. Products may contain non-volatile materials. Furthermore, GCMS response factors vary more than for responses measured in GCFID and ratios comparisons should be considered carefully.