

SANCTUS ESSENCE

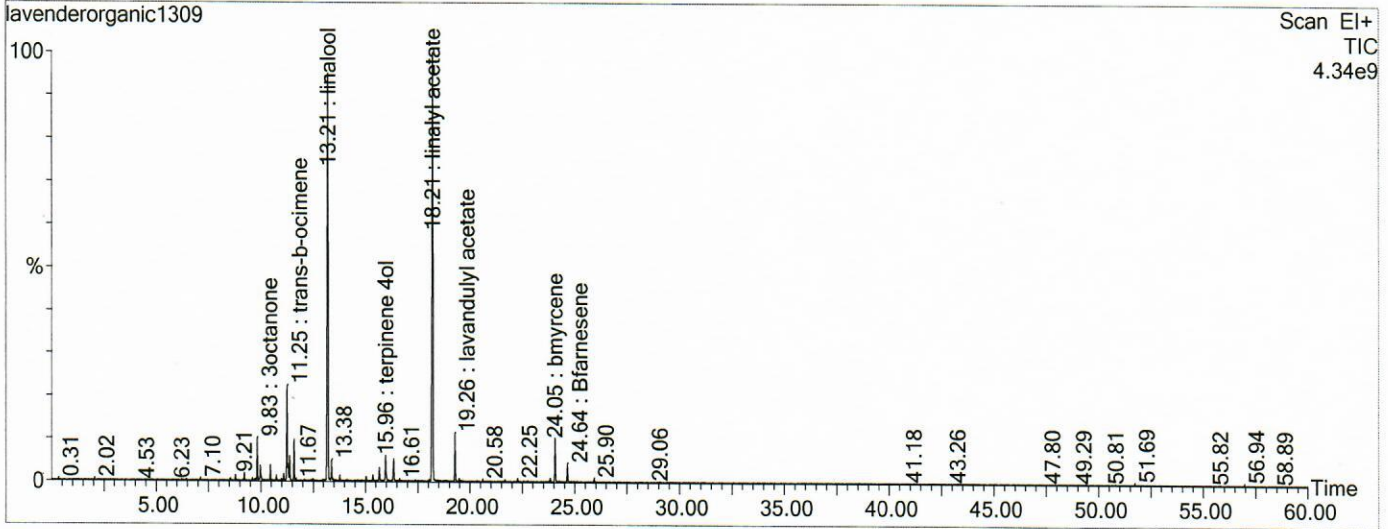
GCMS Analysis Report

File: C:\TURBOMASS\DEFAULT.PRO\Data\lavenderorganic1309.raw
 Acquired: 02-Jan-19 10:43:40 AM

Printed: 03-Apr-19 04:03 PM

GC/MS Method: GC: LemonMS.mth MS: LemonMS.EXP

Page 1 of 1
 Vial Number: 50



#	RT	Area	Area %	Name
1	9.827	14,106,843.0	1.821	3octanone
2	11.248	35,424,436.0	4.574	trans-b-ocimene
3	11.368	8,561,440.0	1.105	18cineol
4	11.588	14,415,334.0	1.861	b ocimene
5	13.214	229,095,520.0	29.579	linalool
6	15.960	11,692,514.0	1.510	terpinene 4ol
7	16.345	10,463,513.0	1.351	alpha terpineol
8	18.211	241,978,592.0	31.243	linalyl acetate
9	19.261	17,957,980.0	2.319	lavandulyl acetate
10	24.048	17,531,456.0	2.264	bmyrcene

ACQUISITION PARAMETERS

Oven: Initial temp 75°C for 0 min, ramp 4°C/min to 220°C, hold 30 min, InjAauto=250°C, Volume= 1µL, Split=100:1, Carrier Gas=He, Solvent Delay=0.00 min, Transfer Temp=210°C, Source Temp=200°C, Scan: 50 to 300Da, Column 60.0m x 250µm Elite-5 Column

Percentages are only indicative of relative peak ratios on the chromatogram and not of their concentration in the sample. Products may contain non-volatile materials. Furthermore, GCMS response factors vary more than for responses measured in GCFID and ratios comparisons should be considered carefully.