

SANCTUS ESSENCE

GCMS Analysis Report

File: C:\TURBOMASS\DEFAULT.PRO\Data\OrganicJuniperBerryOil49554.raw

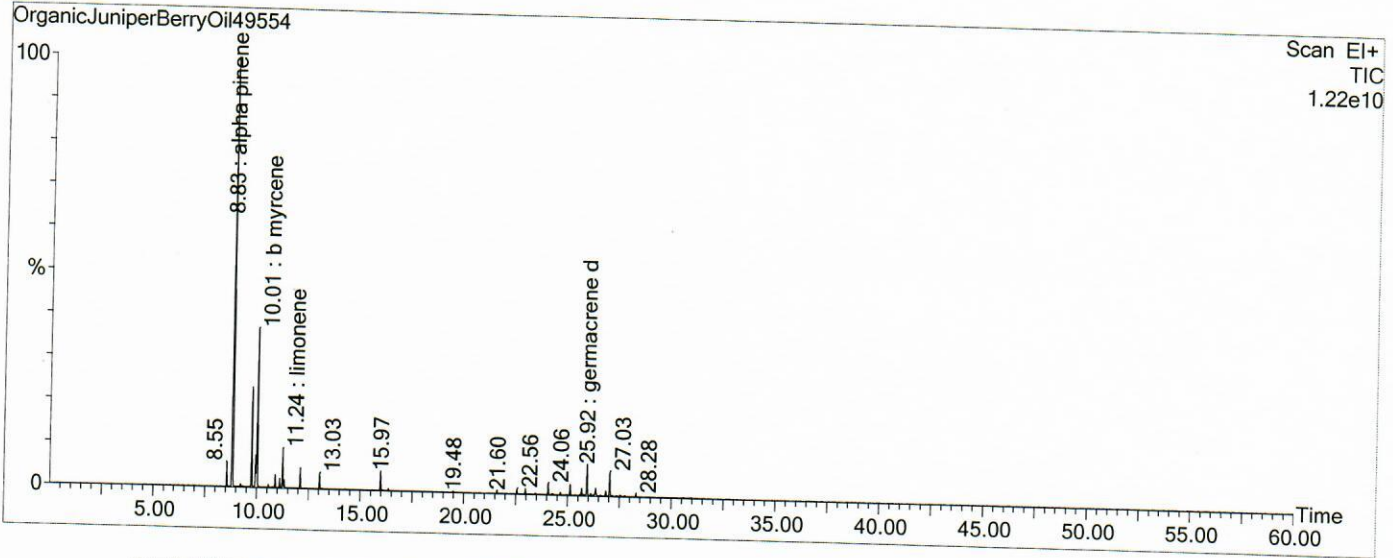
Acquired: 26-Mar-19 08:42:05 PM

Printed: 04-Apr-19 09:55 AM

GC/MS Method: GC: LemonMS.mth MS: LemonMS.EXP

Page 1 of 1

Vial Number: 11



#	RT	Area	Area %	Name
1	8.832	552,528,960.0	42.435	alpha pinene
2	9.747	101,638,752.0	7.806	sabinene
3	10.012	191,135,936.0	14.680	b myrcene
4	11.243	38,254,144.0	2.938	limonene
5	25.924	36,651,836.0	2.815	germacrene d

ACQUISITION PARAMETERS

Oven: Initial temp 75°C for 0 min, ramp 4°C/min to 220°C, hold 30 min, InjAauto=250°C, Volume= 1µL, Split=100:1, Carrier Gas=He, Solvent Delay=0.00 min, Transfer Temp=210°C, Source Temp=200°C, Scan: 50 to 300Da, Column 60.0m x 250µm Elite-5 Column

Percentages are only indicative of relative peak ratios on the chromatogram and not of their concentration in the sample. Products may contain non-volatile materials. Furthermore, GCMS response factors vary more than for responses measured in GCFID and ratios comparisons should be considered carefully.