

SANCTUS ESSENCE

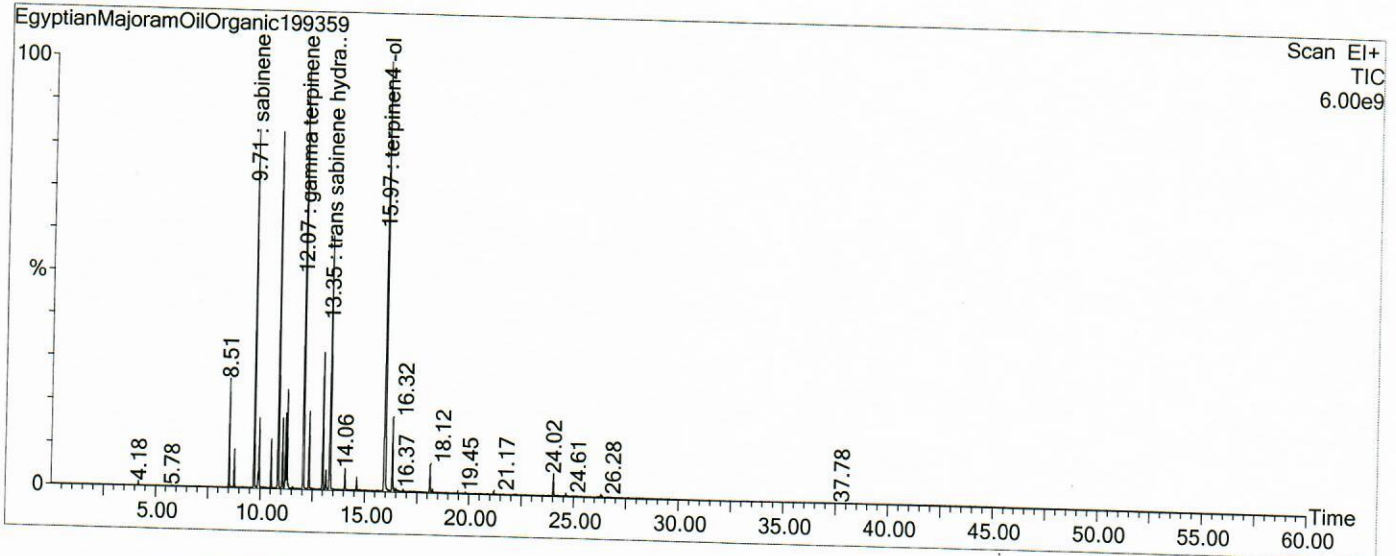
GCMS Analysis Report

File: C:\TURBOMASS\DEFAULT.PRO\Data\EgyptianMajoramOilOrganic199359.raw
 Acquired: 09-Apr-19 12:01:44 PM

Printed: 12-Apr-19 03:54 PM

GC/MS Method: GC: LemonMS.mth MS: LemonMS.EXP

Page 1 of 1
 Vial Number: 22



#	RT	Area	Area %	Name
1	9.707	170,593,328.0	9.894	sabinene
2	10.858	204,780,976.0	11.877	alpha terpinene
3	12.073	281,261,440.0	16.313	gamma terpinene
4	13.354	158,806,256.0	9.211	trans sabinene hydrate
5	15.975	331,274,624.0	19.214	terpinen4 -ol

ACQUISITION PARAMETERS

Oven: Initial temp 75°C for 0 min, ramp 4°C/min to 220°C, hold 30 min, InjAauto=250°C, Volume= 1µL, Split=100:1, Carrier Gas=He, Solvent Delay=0.00 min, Transfer Temp=210°C, Source Temp=200°C, Scan: 50 to 300Da, Column 60.0m x 250µm Elite-5 Column

Percentages are only indicative of relative peak ratios on the chromatogram and not of their concentration in the sample. Products may contain non-volatile materials. Furthermore, GCMS response factors vary more than for responses measured in GCFID and ratios comparisons should be considered carefully.