

# SANCTUS ESSENCE

## GCMS Analysis Report

File: C:\TURBOMASS\DEFAULT.PRO\Data\Nerolioil013189176.raw

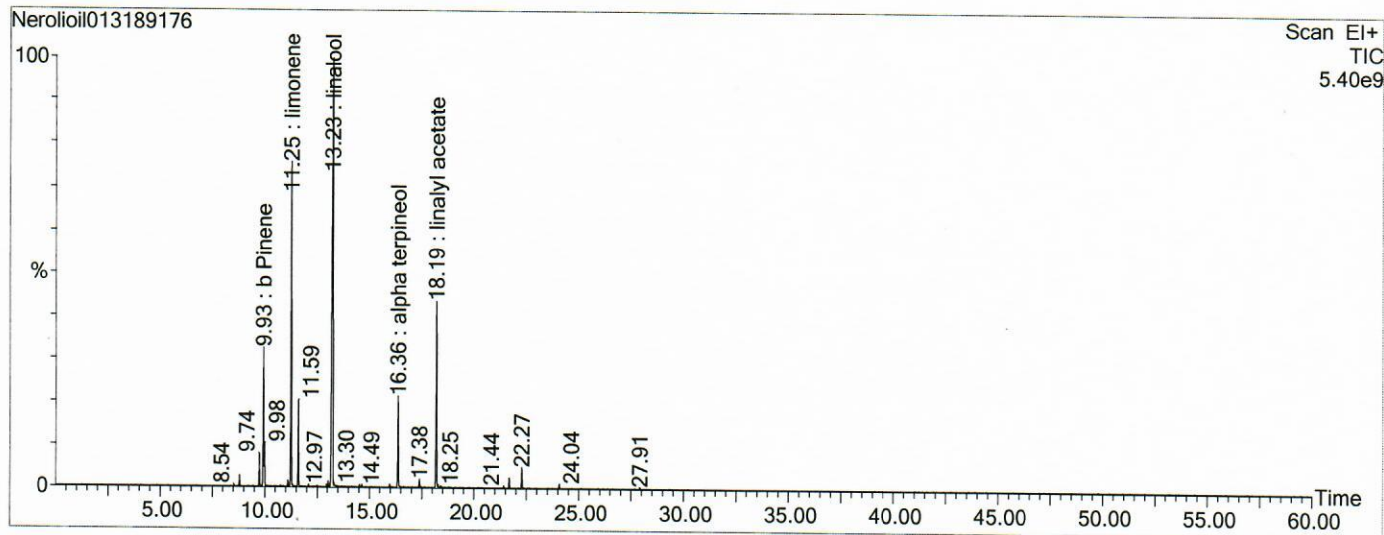
Acquired: 13-Feb-19 10:38:18 PM

Printed: 03-Apr-19 04:16 PM

GC/MS Method: GC: LemonMS.mth MS: LemonMS.EXP

Page 1 of 1

Vial Number: 38



#	RT	Area	Area %	Name
1	9.927	59,515,408.0	6.378	b Pinene
2	11.248	149,437,488.0	16.015	limonene
3	13.244	364,656,384.0	39.081	linalool
4	16.365	45,868,988.0	4.916	alpha terpineol
5	18.185	98,710,784.0	10.579	linalyl acetate

### ACQUISITION PARAMETERS

Oven: Initial temp 75°C for 0 min, ramp 4°C/min to 220°C, hold 30 min, InjAauto=250°C, Volume= 1µL, Split=100:1, Carrier Gas=He, Solvent Delay=0.00 min, Transfer Temp=210°C, Source Temp=200°C, Scan: 50 to 300Da, Column 60.0m x 250µm Elite-5 Column

Percentages are only indicative of relative peak ratios on the chromatogram and not of their concentration in the sample. Products may contain non-volatile materials. Furthermore, GCMS response factors vary more than for responses measured in GCFID and ratios comparisons should be considered carefully.