

SANCTUS ESSENCE

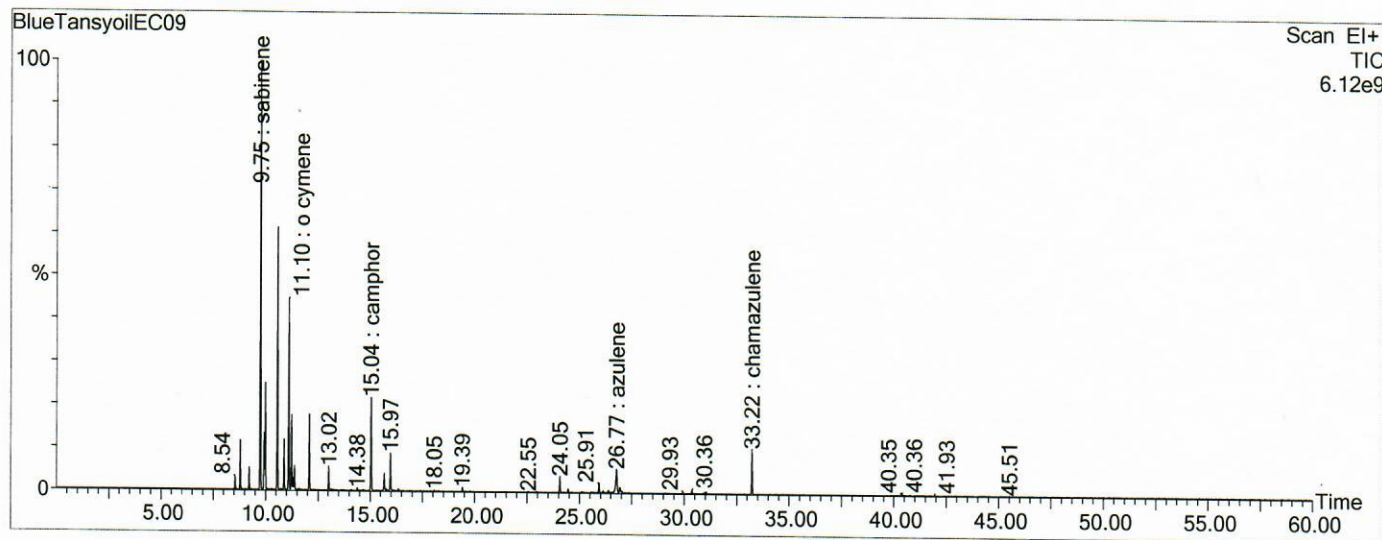
GCMS Analysis Report

File: C:\TURBOMASS\DEFAULT.PRO\Data\BlueTansyoilEC09.raw
 Acquired: 13-Feb-19 08:13:23 PM

Printed: 03-Apr-19 04:14 PM

GC/MS Method: GC: LemonMS.mth MS: LemonMS.EXP

Page 1 of 1
 Vial Number: 15



#	RT	Area	Area %	Name
1	9.747	224,798,048.0	22.080	sabinene
2	9.922	27,998,774.0	2.750	b pinene
3	9.987	55,151,624.0	5.417	myrcene
4	10.563	135,103,280.0	13.270	alpha phellandrene
5	11.098	103,222,392.0	10.139	o cymene
6	11.233	36,775,248.0	3.612	limonene
7	12.083	39,629,592.0	3.893	gamma terpinene
8	15.039	57,339,468.0	5.632	camphor
9	26.769	26,824,714.0	2.635	azulene
10	33.221	25,692,270.0	2.524	chamazulene

ACQUISITION PARAMETERS

Oven: Initial temp 75°C for 0 min, ramp 4°C/min to 220°C, hold 30 min, InjAauto=250°C, Volume= 1µL, Split=100:1, Carrier Gas=He, Solvent Delay=0.00 min, Transfer Temp=210°C, Source Temp=200°C, Scan: 50 to 300Da, Column 60.0m x 250µm Elite-5 Column

Percentages are only indicative of relative peak ratios on the chromatogram and not of their concentration in the sample. Products may contain non-volatile materials. Furthermore, GCMS response factors vary more than for responses measured in GCFID and ratios comparisons should be considered carefully.