



COMPARISON OF “METAL TIME” AND OTHER MANUFACTURERS MODEL KITS

MECHANICAL

Mechanical models DIY 3D puzzle kits offer an interactive and engaging experience, allowing users to assemble moving parts and witness their creations come to life.

Unlike static models, these kits provide a hands-on learning opportunity, fostering creativity, problem-solving skills, and a deeper understanding of mechanical principles.

EDUCATION

Mechanical models inspire engineering creativity, encouraging users to problem-solve and innovate as they assemble intricate mechanisms. Through hands-on construction, users not only learn technical skills but also gain a deeper understanding of engineering principles, fostering self-education and empowerment.

WHY THE “METAL TIME” PRODUCTS PREVAIL?



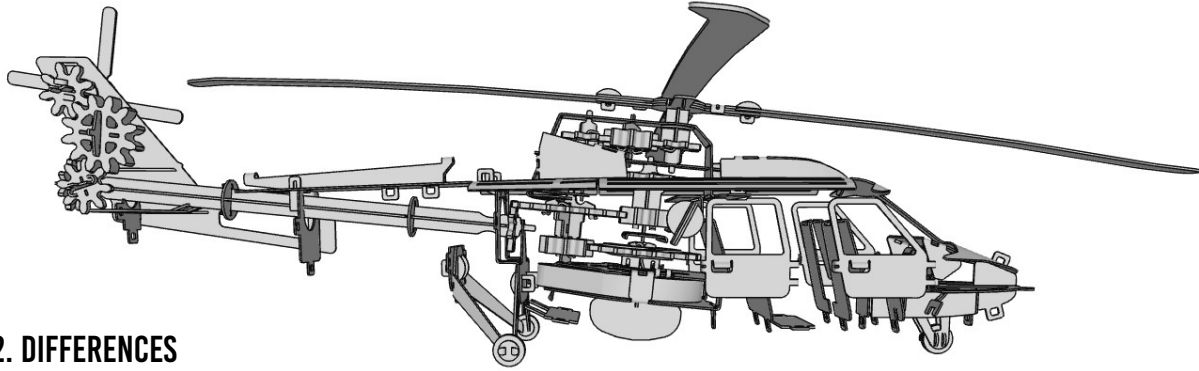
TOP MATERIAL

SS grade 304 is frequently seen in industrial settings, medical and in kitchen appliances. Utilizing AISI304 in 3D puzzle models ensures superior safety standards due to its non-toxic and corrosion-resistant properties, making it ideal for prolonged handling. Unlike brass, plastic, or plywood materials, AISI304 offers peace of mind, especially in environments where health and durability are paramount concerns.

DEVELOPMENT

Metal Time stands out as the sole design bureau in Europe crafting mechanical models, proudly employing its own patented mechanisms. Our commitment to innovation ensures that each creation boasts exclusive features, setting Metal Time apart as a pioneer in the field.

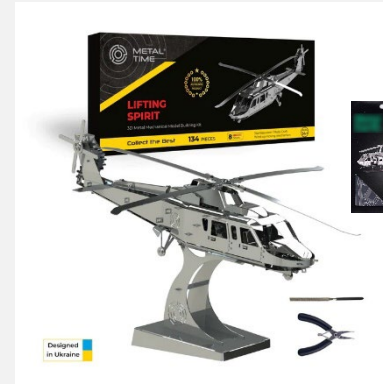
LIFTING SPIRIT HELICOPTER



02. DIFFERENCES

SPECIFICATIONS	METAL TIME MODEL	OTHER MODEL
Price	\$59,00	\$9
FEATURE	ROTATING PROPELLERS BY WINDUP MECHANISM	STATIC
NUMBER OF SHEETS	4	1
NUMBER OF PARTS, PCS.	134	14
THICKNESS OF METAL, MM	0,4	0,15
ASSEMBLED SIZE, INCH	7.4 X 2.3 X 5.1	4.72 X 0.79 X 1.57
ASSEMBLED SIZE, CM	18.8 X 6 X 13	11 X 2 X 4
RETAIL PACKAGE SIZE, CM	3 X 16 X 26	0.2 X 11 X 17
WEIGHT, LBS	0,2	0,01
WEIGHT, GR.	93	8
ASSEMBLING TIME, HOURS	8	1
ADDITIONAL INCLUDED	TOOLS SET, WHITE GLOVES, BADGE PIN	×
INCLUDED	POWER SPRING, GEARS FOR MOVING MECHANICAL EXPERIENCE	×

01. PACKAGE



03. PHOTO



04. VIDEO



A kit for self-assembly of a helicopter, produced by other manufacturers, consists of just 1 cutting sheet, and is almost x3 times smaller in size and more then x10 times less in weight.

The kit from another manufacturers includes 14 parts while Metal Time's has 93 parts adding gears, spring, tools, large and detailed user's guide and big colorful giftbox.

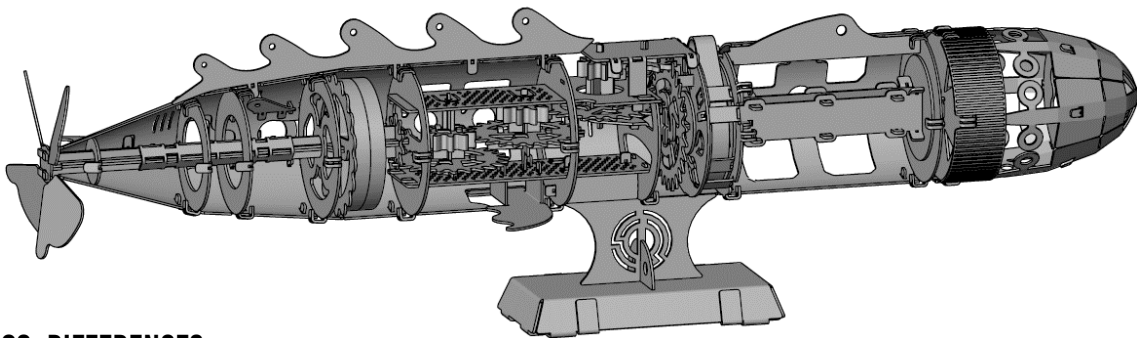
The assembled model of other manufacturers is made from x3 times thinner material.

The model from other manufacturers is susceptible to mechanical damage even from light impacts.

The absence of a mechanism and platform makes other's model manufacturers small and just static.



ELUSIVE NAUTILUS



02. DIFFERENCES

SPECIFICATIONS	METAL TIME MODEL	OTHER MANUFACTURER MODEL
Price	\$59,00	\$9
FEATURE 1	Windup mechanism to move propellers and nose	Static
FEATURE 2	Double color	
NUMBER OF SHEETS	5	1
NUMBER OF PARTS, PCS.	91	16
THICKNESS OF METAL, MM	0,5	0,15
ASSEMBLED SIZE, INCH	7.4 x 2.3 x 5.1	4.72 x 0.79 x 1.57
ASSEMBLED SIZE, CM	18.8 x 6 x 13	12 x 2 x 4
RETAIL PACKAGE SIZE, CM	3 x 16 x 26	0.2 x 11 x 17
WEIGHT, LBS	0,2	0,01
WEIGHT, GR.	93	8
ASSEMBLING TIME, HOURS	8	1
INCLUDED	Tools set, white gloves, badge pin	X

01. PACKAGE



03. PHOTO



04. VIDEO



A kit for self-assembly of a submarine, produced by other manufacturers, consists of just 1 cutting sheet, and is almost x4 times smaller in size and more than x10 times less in weight.

The kit from another manufacturers includes 16 parts adding gears, spring, tools, large and detailed user's guide and big colorful giftbox.

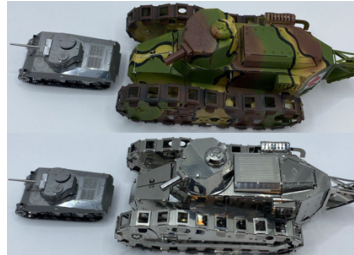
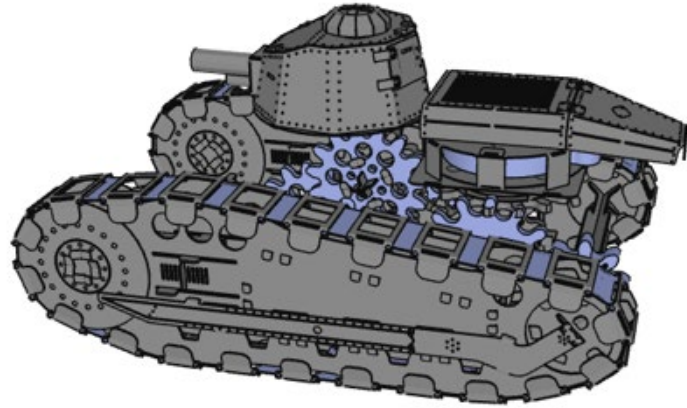
The assembled model of other manufacturers is made from x4 times thinner material.

The model from other manufacturers is susceptible to mechanical damage even from light impacts.

The absence of a mechanism and platform makes other's model manufacturers small and just static.

TANKS :

NIMBLE FIGHTER



02. DIFFERENCES

SPECIFICATIONS	METAL TIME MODEL	OTHER MANUFACTURER MODEL
Price	\$99	\$10,95
FEATURE 1	Rotating turret, opening hulls	Static
FEATURE 2	Windup mechanism moving tracks	
NUMBER OF SHEETS	4	2
NUMBER OF PARTS, PCS.	205	55
THICKNESS OF METAL, MM	0,50	0,15
ASSEMBLED SIZE, INCH	7.09 x 2.91 x 3.27	2.91 x 1.38 x 1.34
ASSEMBLED SIZE, CM	18 x 7.4 x 8.3	7.4 x 3.5 x 3.5
RETAIL PACKAGE SIZE, CM	3 x 23 x 38	0.2 x 11 x 17
WEIGHT, LBS	0,65	0,04
WEIGHT, GR.	297	18
ASSEMBLING TIME, HOURS	12	2
INCLUDED	License "World of Tanks" Special game code	×

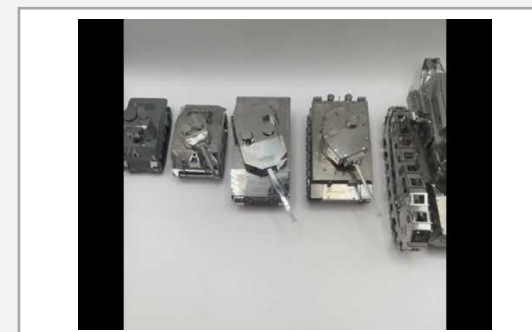
01. PACKAGE



03. PHOTO

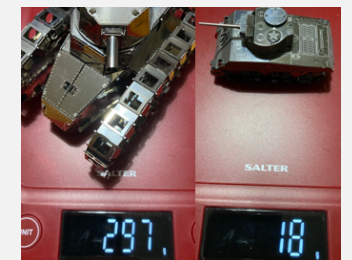


04. VIDEO



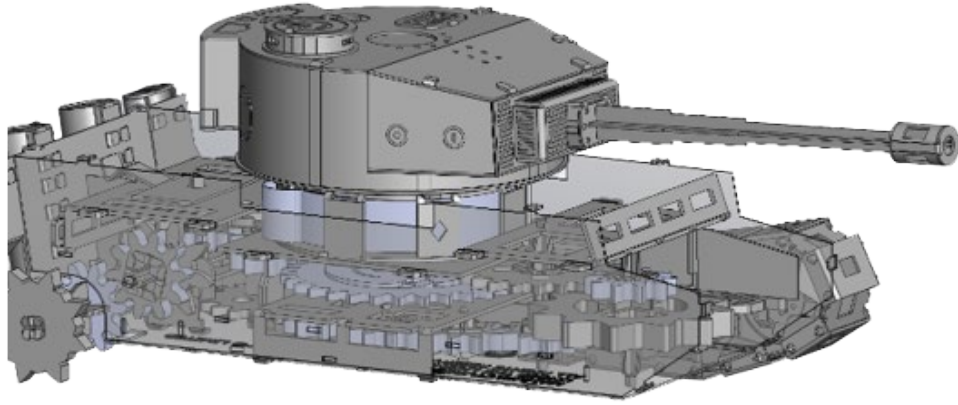
A kit for self-assembly of a tank, produced by other manufacturers, consists of just 2 cutting sheets, and is almost x5 times smaller in size and more than x15 times less in weight. The kit from another manufacturer includes 55 parts adding gears, spring, tools, large and detailed user's guide and big colorful giftbox branded with "World of Tanks" logo. The assembled model of other manufacturers is made from x4 times thinner material.

The model from other manufacturers is susceptible to mechanical damage even from light impacts. The absence of a mechanism makes other manufacturers models small and just static. Even turret is not rotating in other manufacturers models.



TANKS :

TIGER I PONDEROUS PANZER



02. DIFFERENCES

SPECIFICATIONS	METAL TIME MODEL	OTHER MANUFACTURER MODEL
Price	\$59,00	\$10,95
FEATURE 1	Rotating turret, opening hulls	Static
FEATURE 2	Windup mechanism moving tracks	
NUMBER OF SHEETS	3	2
NUMBER OF PARTS, PCS.	188	55
THICKNESS OF METAL, MM	0,50	0,15
ASSEMBLED SIZE, INCH	4.80 x 1.73 x 2.40	2.91 x 1.38 x 1.34
ASSEMBLED SIZE, CM	12.2 x 4.4 x 6.1	7.4 x 3.5 x 3.5
RETAIL PACKAGE SIZE, CM	3 x 18 x 20	0.2 x 11 x 17
WEIGHT, LBS	0,31	0,04
WEIGHT, GR.	142	18
ASSEMBLING TIME, HOURS	16	2
INCLUDED	License "World of Tanks" Special game code	×

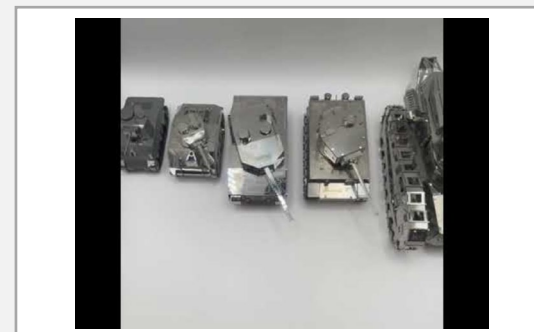
01. PACKAGE



03. PHOTO



04. VIDEO



A kit for self-assembly of a tank, produced by other manufacturers, consists of 2 cutting sheet, and is almost x3 times smaller in size and more than x8 times less in weight.

The kit from another manufacturers includes 55 parts while Metal Time's has 188 parts adding gears, spring, tools, large and detailed user's guide and big colorful giftbox branded with "World of Tanks" logo.

The assembled model of other manufacturers is made from x4 times thinner material.

The model from other manufacturers is susceptible to mechanical damage even from light impacts.

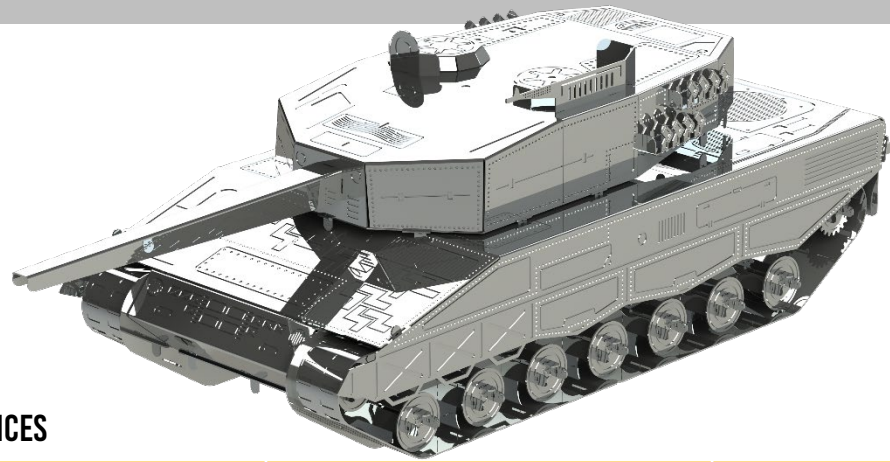


The absence of a mechanism makes other's model manufacturers small and just static.

Even turret is not rotating in other manufacturers models.

TANKS MINI SERIES:

LEOPARD 2



02. DIFFERENCES

SPECIFICATIONS	METAL TIME MODEL	OTHER MANUFACTURER MODEL
Price	\$16,95	\$10,95
FEATURE 1	Rotating turret	Static
NUMBER OF SHEETS	2	2
NUMBER OF PARTS, PCS.	57	55
THICKNESS OF METAL, MM	0,20	0,15
ASSEMBLED SIZE, INCH	5.16 x 1.65 x 1.97	2.91 x 1.38 x 1.34
ASSEMBLED SIZE, CM	13.1 x 4.2 x 5.0	7.4 x 3.5 x 3.5
RETAIL PACKAGE SIZE, CM	0.3 x 18 x 20	0.2 x 11 x 17
WEIGHT, LBS	0,1	0,04
WEIGHT, GR.	45	18
ASSEMBLING TIME, HOURS	2	2
INCLUDED	License "World of Tanks" Special game code	X

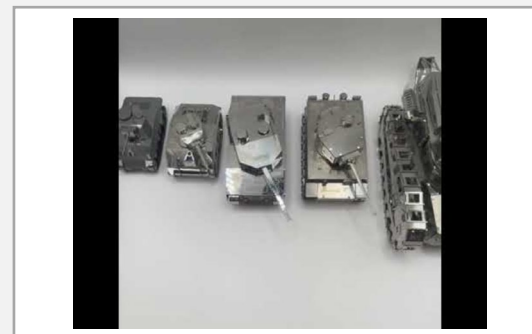
01. PACKAGE



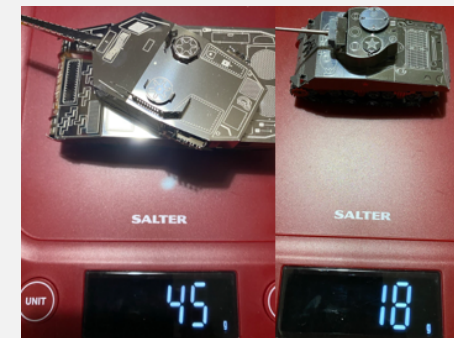
03. PHOTO



04. VIDEO

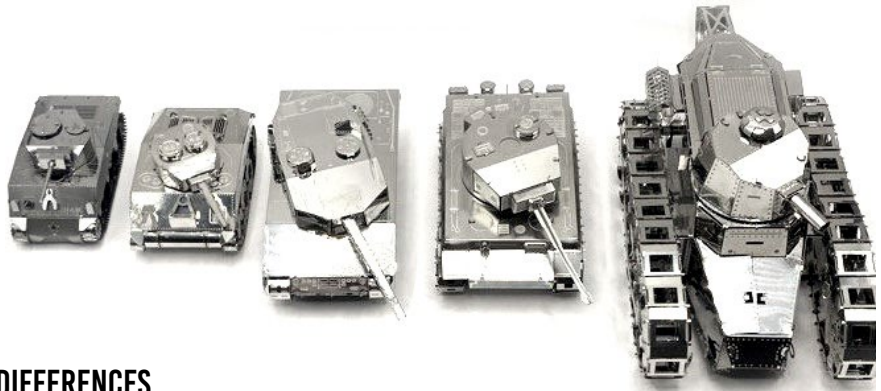


A mini-kit for self-assembly of a mini-tank, produced by other manufacturers, consists the same 2pcs of stell sheet, while material Metal Time uses is thicker. Size is x2 smaller of other manufacturers model. as well as the weight. The kit from another manufacturers doesn't hold any historical brand while Metal Time's is branded with "World of Tanks" logo. Turret is not rotating in other manufacturers models, while all Metal Time's tanks has rotating turrets.



TANKS MINI SERIES:

M4 SHERMAN



02. DIFFERENCES

SPECIFICATIONS	METAL TIME MODEL	OTHER MANUFACTURER MODEL
Price	\$14,95	\$10,95
FEATURE 1	Rotating turret	Static
NUMBER OF SHEETS	2	2
NUMBER OF PARTS, PCS.	44	55
THICKNESS OF METAL, MM	0,20	0,15
ASSEMBLED SIZE, INCH	3.55 x 1.65 x 1.46	2.91 x 1.38 x 1.34
ASSEMBLED SIZE, CM	8 x 4.2 x 3.7	7.4 x 3.5 x 3.5
RETAIL PACKAGE SIZE, CM	0.3 x 18 x 20	0.2 x 11 x 17
WEIGHT, LBS	0,05	0,04
WEIGHT, GR.	22	18
ASSEMBLING TIME, HOURS	2	2
INCLUDED	License "World of Tanks" Special game code	×

01. PACKAGE



03. PHOTO



04. VIDEO



A mini-kit for self-assembly of a mini-tank, produced by other manufacturers, consists the same of 2 cutting sheet, while material Metal Time uses is thicker.

Size is a little bit smaller of other manufacturers model. as well as the weight.

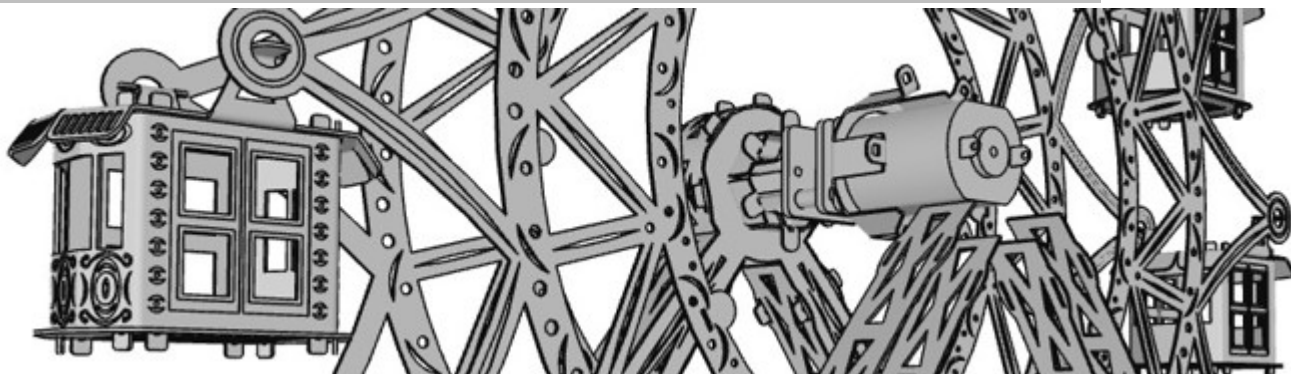
The kit from another manufacturers doesn't hold any historical brand while Metal Time's is branded with "World of Tanks" logo.

Models are almostm but not the same



Turret is not rotating in other manufacturers models, while all Metal Time's tanks has rotating turrets.

AMUSEMENT RIDE



02. DIFFERENCES

SPECIFICATIONS	METAL TIME MODEL	OTHER MANUFACTURER MODEL
Price	\$79	\$16,95
FEATURE 1	Moving wheel electronic mechanism	Static
NUMBER OF SHEETS	3	2
NUMBER OF PARTS, PCS.	63	58
THICKNESS OF METAL, MM	0,30	0,15
ASSEMBLED SIZE, INCH	7.48 x 2.76 x 6.69	2.95 x 1.9 x 3.78
ASSEMBLED SIZE, CM	19 x 7 x 17	7.5 x 3.7 x 10.1
RETAIL PACKAGE SIZE, CM	3 x 23 x 38	0.2 x 11 x 17
WEIGHT, LBS	0,36	0,03
WEIGHT, GR.	165	15
ASSEMBLING TIME, HOURS	6	1
INCLUDED	Electronic motor, power box, wires for rotating experience. Tools set, white gloves, badge pin.	×

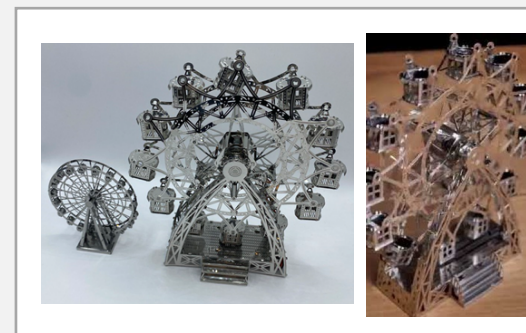
01. PACKAGE



03. PHOTO



04. VIDEO



A kit for self-assembly of a ferris wheel, produced by other manufacturers, consists of 2pcs of small and thin sheets, and is almost x5 times smaller in size and more then x11 times less in weight.

The kit from another manufacturers includes no mechanical and electronic while Metal Time's has it adding motor, tools, large and detailed user's guide and big colorful giftbox.

The assembled model of other manufacturers is made from x2 times thinner material.

The model from other manufacturers is susceptible to mechanical damage even from light impacts.

The absence of a mechanism and electronics makes other manufacturers model small and just static.



THE GREAT BELL



02. DIFFERENCES

SPECIFICATIONS	METAL TIME MODEL	OTHER MANUFACTURER MODEL
Price	\$69	\$12,95
FEATURE 1	Working clock, LED light candle	Static
NUMBER OF SHEETS	4	2
NUMBER OF PARTS, PCS.	35	58
THICKNESS OF METAL, MM	0,30	0,15
ASSEMBLED SIZE, INCH	3.19 x 3.19 x 11.34	2.95 x 1.9 x 3.78
ASSEMBLED SIZE, CM	8.5 x 8.5 x 28.8	7.5 x 3.7 x 10.1
RETAIL PACKAGE SIZE, CM	3 x 16 x 26	0.2 x 11 x 17
WEIGHT, LBS	0,19	0,03
WEIGHT, GR.	85	15
ASSEMBLING TIME, HOURS	6	1
INCLUDED	Tools set, white gloves, badge pin. Electronic clock mechanism	X

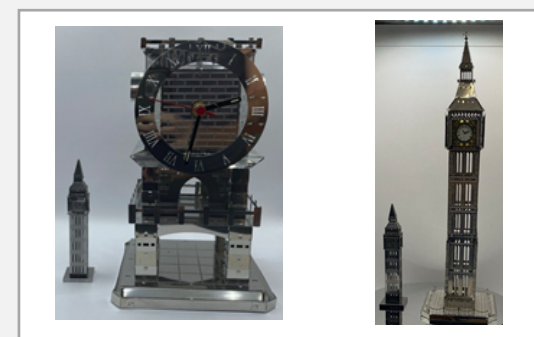
01. PACKAGE



03.PHOTO



04.VIDEO



A kit for self-assembly of a Big Ben, produced by other manufacturers, consists of 2pcs of small and thin sheets, and is almost x5 times smaller in size and more then x6 times less in weight.

The kit from another manufacturers includes no electronic clock while Metal Time's has it working with battery adding pace for LED candle, tools, large and detailed user's guide and big colorful giftbox.

The assembled model of other manufacturers is made from x2 times thinner material.

The model from other manufacturers is susceptible to mechanical damage even from light impacts.

The absence of clock makes other manufacturers model less attractive.



GUARDIAN OF THE COASTS



02. DIFFERENCES

SPECIFICATIONS	METAL TIME MODEL	OTHER MANUFACTURER MODEL
Price	\$99	\$16,95
FEATURE 1	Rotating sonar marin radar	Static
NUMBER OF SHEETS	4	2
NUMBER OF PARTS, PCS.	161	58
THICKNESS OF METAL, MM	0,40	0,15
ASSEMBLED SIZE, INCH	8.26 x 2.36 x 4.72	2.95 x 1.9 x 3.78
ASSEMBLED SIZE, CM	21 x 6 x 12	7.5 x 3.7 x 10.1
RETAIL PACKAGE SIZE, CM	3 x 23 x 38	0.2 x 11 x 17
WEIGHT, LBS	0,60	0,03
WEIGHT, GR.	274	13
ASSEMBLING TIME, HOURS	10	2
INCLUDED	Electronic motor, power box, wires for rotating experience. Tools set, white gloves, badge pin	X

01. PACKAGE



A kit for self-assembly of a ship, produced by other manufacturers, consists of just 2pcs of metal sheets, and is almost x5 times smaller in size and more then x20 times less in weight.

The kit from another manufacturers includes 58 parts while Metal Time's has 161 parts adding motor, gears, spring, tools, large and detailed user's guide and big colorful giftbox.

03. PHOTO



The assembled model of other manufacturers is made from x3 times thinner material.

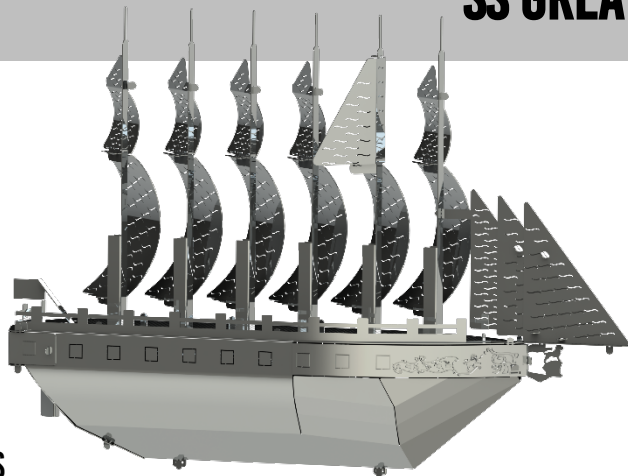
The model from other manufacturers is susceptible to mechanical damage even from light impacts.

04. VIDEO



The absence of a mechanism and platform makes other's model manufacturers small and just static.

SS GREAT BRITAIN



02. DIFFERENCES

SPECIFICATIONS	METAL TIME MODEL	OTHER MANUFACTURER MODEL
Price	\$16,95	\$16,95
FEATURE 1	Static	Static
NUMBER OF SHEETS	2	2
NUMBER OF PARTS, PCS.	29	58
THICKNESS OF METAL, MM	0,20	0,15
ASSEMBLED SIZE, INCH	5.34 x 1.46 x 3.90	2.95 x 1.9 x 3.78
ASSEMBLED SIZE, CM	13.6 x 3.7 x 9.90	7.5 x 3.7 x 10.1
RETAIL PACKAGE SIZE, CM	0.3 x 18 x 20	0.2 x 11 x 17
WEIGHT, LBS	0,08	0,03
WEIGHT, GR.	36	13
ASSEMBLING TIME, HOURS	2	2
INCLUDED	Colorful users guide. Polishing cloth.	X

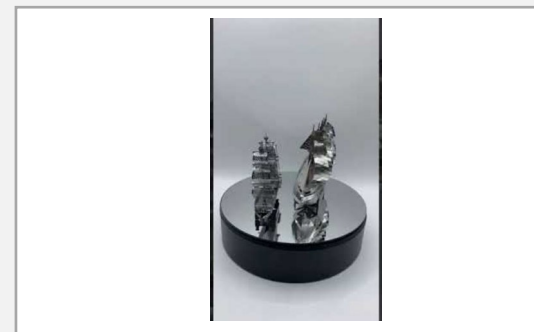
01. PACKAGE



03. PHOTO



04. VIDEO



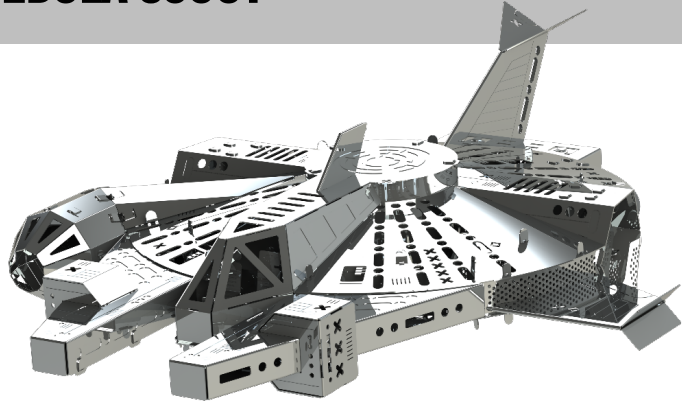
A kit for self-assembly of a ship, produced by other manufacturers, consists the same 2pcs of metal sheets, but uses thinner material of steel.

It is almost x2 times smaller in size and almost x3 times less in weight.

The assembled model of other manufacturers is made from thinner material.



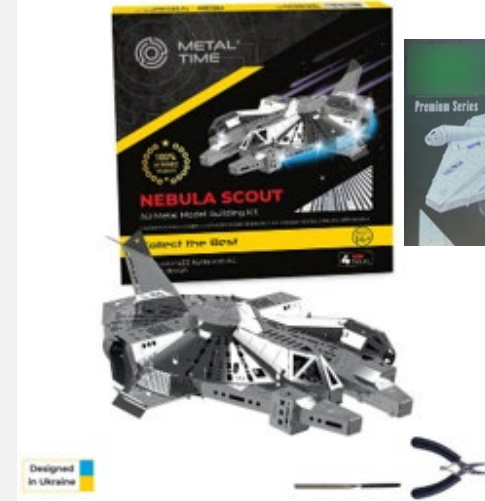
NEBULA SCOUT



02. DIFFERENCES

SPECIFICATIONS	METAL TIME MODEL	OTHER MANUFACTURER MODEL
Price	\$69	\$13,95
FEATURE 1	Multicolor LED lighting with remote control	Static
NUMBER OF SHEETS	4	2
NUMBER OF PARTS, PCS.	74	58
THICKNESS OF METAL, MM	0,30	0,15
ASSEMBLED SIZE, INCH	5.34 x 1.46 x 3.90	
ASSEMBLED SIZE, CM	19 x 15.5 x 9	10.8 x 7.62 x 6.99
RETAIL PACKAGE SIZE, CM	3 x 18 x 20	0.2 x 11 x 17
WEIGHT, LBS	0,33	0,09
WEIGHT, GR.	148	42
ASSEMBLING TIME, HOURS	4	2
INCLUDED	LED light, remote control, Colorful users guide. Polishing cloth.	X

01. PACKAGE



03.PHOTO



04.VIDEO



A kit for self-assembly of a spaceship, produced by other manufacturers, consists of just 2pcs of small and thin sheets, and is almost x4 times smaller in size and almost x4 times less in weight.

The kit from other manufacturers includes no mechanical and electronics while Metal Time's has it adding LED lights, tools, large and detailed user's guide and big colorful giftbox.

The assembled model of other manufacturers is made from x2 times thinner material.

The model from other manufacturers is susceptible to mechanical damage even from light impacts.

The absence of electronics makes other manufacturers model small and just static



PACKAGE AND MANUAL



A self-assembly kit produced by another manufacturer consists of one cutting sheet and is several times smaller in size, weight, volume, number of parts, and lack of tools. The kit from other manufacturers does not include parts for the mechanism, tools and extensive detailed assembly instructions.



The assembled model from another manufacturer is several times smaller than the Metal Time models. Made from three to four times thinner stainless steel sheet, the model from other manufacturers is susceptible to mechanical damage even from light impacts.



The absence of mechanics makes models of other manufacturers just static. The Metal Time models are educational, creative and great gift for enthusiasts.

