

# Certificate of Analysis



SCIENTIFIC

800-253-4942 • [IBISCI.com](http://IBISCI.com)

An ISO 9001 Certified Company

## QUICK BLUE PROTEIN STAIN

### PRODUCT NUMBER

IB01034 \_\_\_\_\_ 1L

### LOT NO.

Lot# \_\_\_\_\_ 22D3005

### STORAGE

Store at room temperature.

### CAS NO.

CAS# \_\_\_\_\_ n/a

### SPECIFICATIONS

	Specification	Analysis	Disposition
Appearance (Visual Inspection)	PASS / FAIL	Emerald Green Solution	PASS
Absorbance (450nm)	PASS / FAIL	0.426	PASS
pH	PASS / FAIL	1.0	PASS

### ANALYSIS

Performance Analysis:

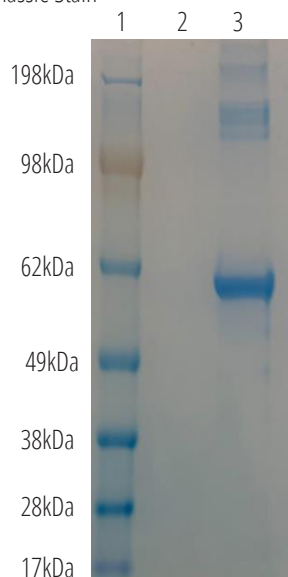
2mg Total Protein Load

Denaturing/Reducing Conditions on 4--12% Bis-Tris

BSA Stained 60 minutes exposure with Quick Coomassie Stain

Lane:

1. Marker- SeeBlue Plus2 PreStained Protein Ladder
2. Blank
3. BSA



### DATE OF

Manufacture Date: \_\_\_\_\_ 02/08/2022

### CERTIFICATION

We certify that this batch conforms to the specifications listed above and has been reviewed by a quality representative. This document has been electronically produced and signed by IBI SCIENTIFIC.

Toby Frericks  
Quality Control

04/21/22  
Date

FOR RESEARCH AND DEVELOPMENT PURPOSES ONLY

Building Quality Scientific.