

Certificate of Analysis



SCIENTIFIC

800-253-4942 • IBISCI.com

An ISO 9001 Certified Company

QUICK BLUE PROTEIN STAIN

PRODUCT NUMBER

IB01034 _____ 1L

LOT NO.

Lot# _____ 21L2002

STORAGE

Store at room temperature.

CAS NO.

CAS# _____ n/a

SPECIFICATIONS

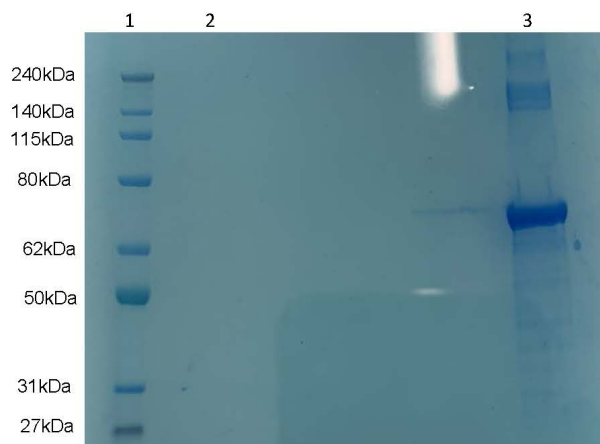
	Specification	Analysis	Disposition
Appearance (Visual Inspection)	PASS / FAIL	Emerald Green Solution	PASS
Absorbance (450nm)	PASS / FAIL	0.418	PASS
pH	PASS / FAIL	1.0	PASS

ANALYSIS

2 µg Total Protein Load
Denaturing/Reducing Conditions on 41-2% Bis-Tris
BSA Stained With 60 Minutes Exposure with Quick Coomassie Stain.

Lane:

1. Marker – Protein Ark Elite Protein Ladder
2. Blank
3. BSA



DATE OF

Manufacture Date: _____ 11/17/2021

CERTIFICATION

We certify that this batch conforms to the specifications listed above and has been reviewed by a quality representative. This document has been electronically produced and signed by IBI SCIENTIFIC.

Toby Frericks
Quality Control

12/08/21
Date

FOR RESEARCH AND DEVELOPMENT PURPOSES ONLY

Building Quality Scientific.

IBI SCIENTIFIC • 7445 Chavenelle Road • Dubuque, IA 52002-9664 • USA