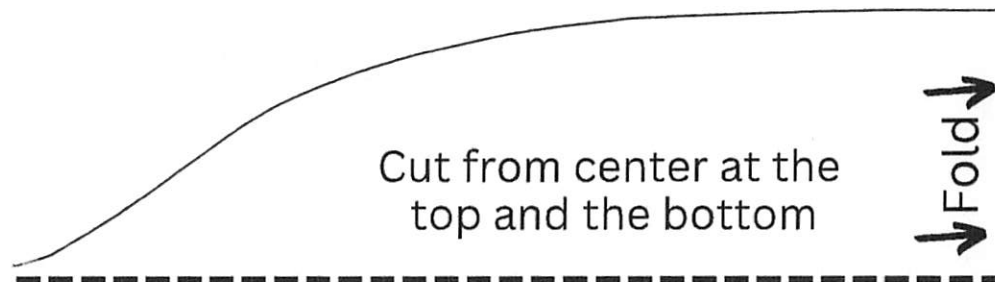


Headband with Earflap

Cut width 1" or 2.5 cm less than your head circumference.

Length or depth is 8" or 10 cm in the video. You can cut this rectangle and fold in half as picture shows to cut the curve from the middle on both sides of the long seam. Also, keep in mind that fleece and other stretchy fabrics may be different so you may need to adjust your width. I suggest polar fleece for this headband. The method of sewing the closing seam around the bottom and turning right side out is also shown in just about all of our summer headband videos. When sewing this closing seam, use a seam allowance of 1/2" or 125 mm. Leave a gap of about 2" or 5 cm or more for turning right side out close too but not on the back seam. Top stitch the same width on both edges for a professional looking finish!



This edge line is 5.25" or 133 mm long from the fold. Increase width for larger heads or reduce for smaller heads.

Visor for Polar Fleece Headband

3/8" or 1 cm seam allowance is built in. Cut into gray area to accommodate a larger seam allowance.

Use extra heavy weight interfacing. In the video I use Pellon brand, Extra Firm Sew in Stabilizer, style 926.

In my business I also use a super firm Peltex 9290 which is also used for making rigid purses. This is a more challenging interfacing to work with but produces a very firm visor. Only use this if you are an experienced sewer.