



@madcaphats on YouTube
Winter Canada Cap Video Supplement and Main Pattern Pieces
https://youtu.be/yY_5lwOF2Xc

You will need to measure your head circumference to determine the lengths of the fabric pieces you will need to make this hat. To measure your head, take a soft tape measure and go around your head just above your ears and just above your eyebrows. Do not pull the tape super tight but instead create a comfortable feel to the tape measure. This will be your head circumference. Please note that fleece stretchiness is different. You should avoid four way stretch material for this hat and use two way stretch for the fleece pieces in the video. The fleece pieces can be substituted with other fabric in a medium or heavy weight like a jogging fleece knit, woollens etc but use two way stretch or cut on the bias for the band pieces to help ease the top into the seam that joins it to the rest of the hat. Lining pieces and the backside of the earflap should be cosy and comfortable and warm. I use Sherpa Fleece in the Video but you can use regular fleece (contrasting color is nice) or minky fabric or a low pile faux fur.

Band and Cuff length - Your Head Circumference plus 1- 1.5 inches or 2.5 to 3.5 cm

Cuff Piece (Cut 1) - The Cuff is the piece that is folding in half and sewn to the visor during assembly. I cut this piece for my hat 23 5/8 inches or 60 cm long (stretchy direction) by 4 3/4 inches deep or 12 cm deep

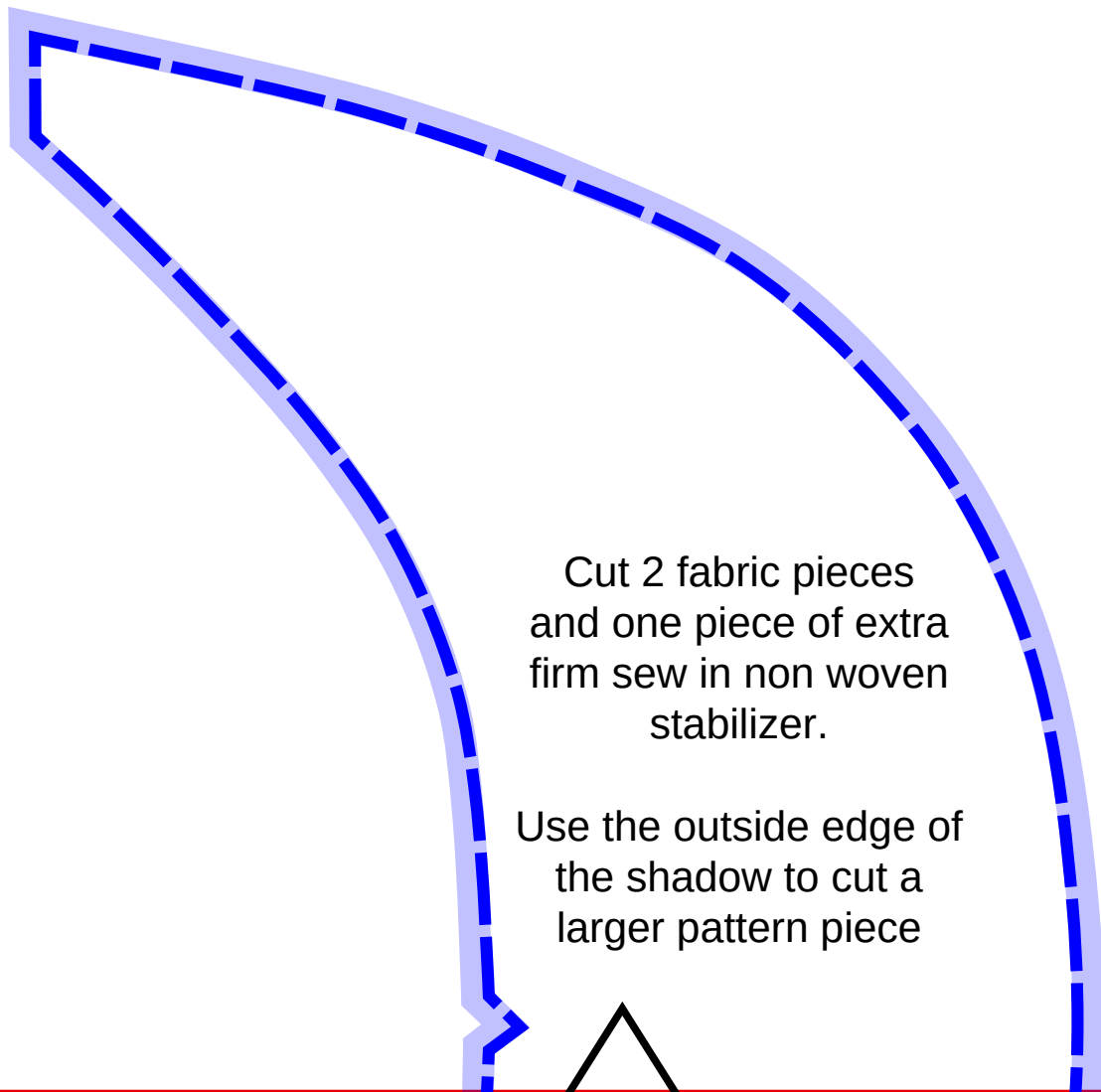
Band Pieces (Cut 2) - There are two pieces that are cut for the band. One is the outside piece, so the main fabric for your cap, and the other is inside the cap and is referred to as the lining. In the video I cut my band pieces to be the same length as my Cuff so 23 5/8 inches or 60 cm long going in the stretchy direction. The depth is 4 3/8 inches or 111 mm for both pieces. I cut these together, right sides together, so they will be perfectly matched when sewing. Refer to the video for rounding the top edge corners.

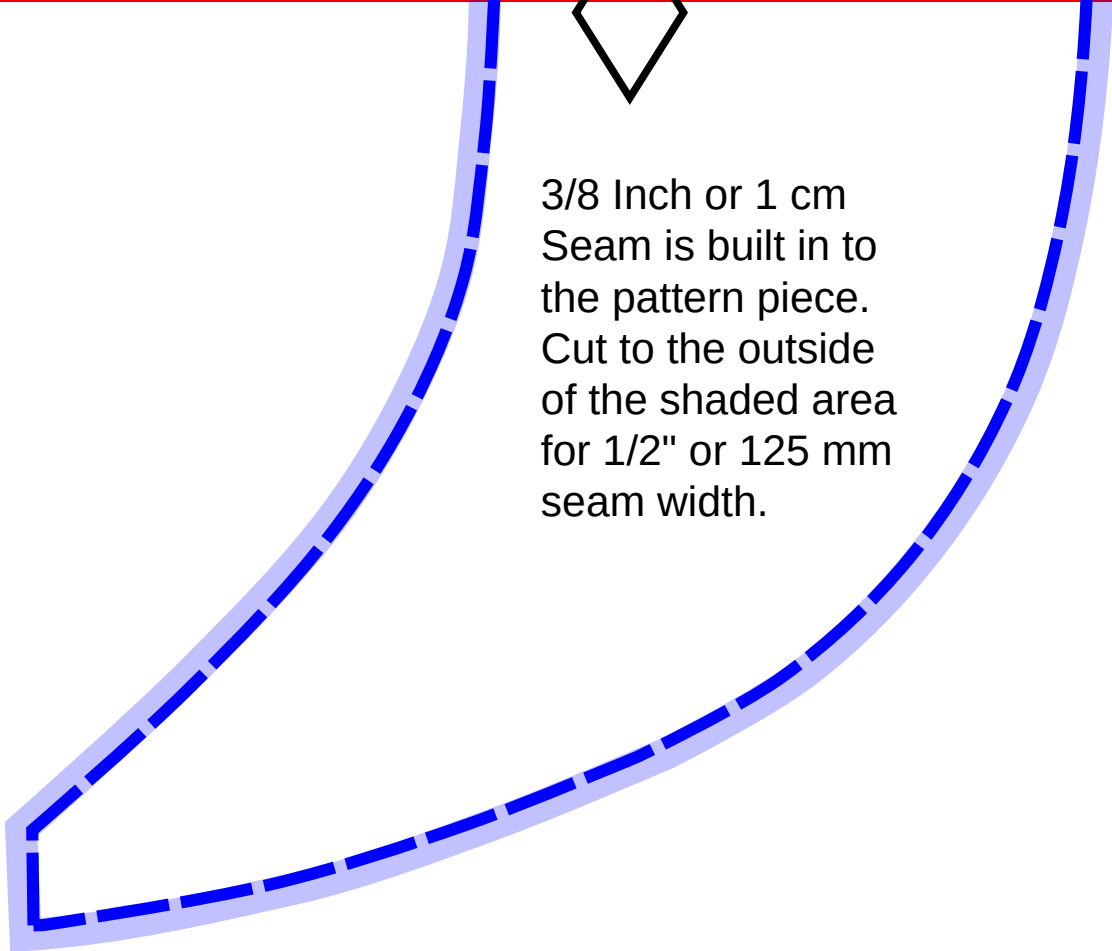
Tie and Toggle - The tie and toggle really give this cap the chance to become super warm and cosy. IT is optional however and you can leave it out or replace with some ties cut from fleece going in the non stretchy direction. There is a winter Kids Stroller Hat video on our channel that used fleece ties if you need some reference for how to do this. I would suggest cutting the strips at least 1 inch or 2.5 cm wide by about 14 inches or 35 cm long. You can trim as needed.

Stabilizer - I use Pellon Brand Extra Firm Sew in non woven Stabilizer. There is a link on our Supply Page for this product on Amazon Canada.

Canada Cap Visor

Join these two pages together by matching the diamonds and red box lines below. Trimming close to the edge of one of the bottom red lines helps with the join. Use tape or glue.





3/8 Inch or 1 cm
Seam is built in to
the pattern piece.
Cut to the outside
of the shaded area
for 1/2" or 125 mm
seam width.



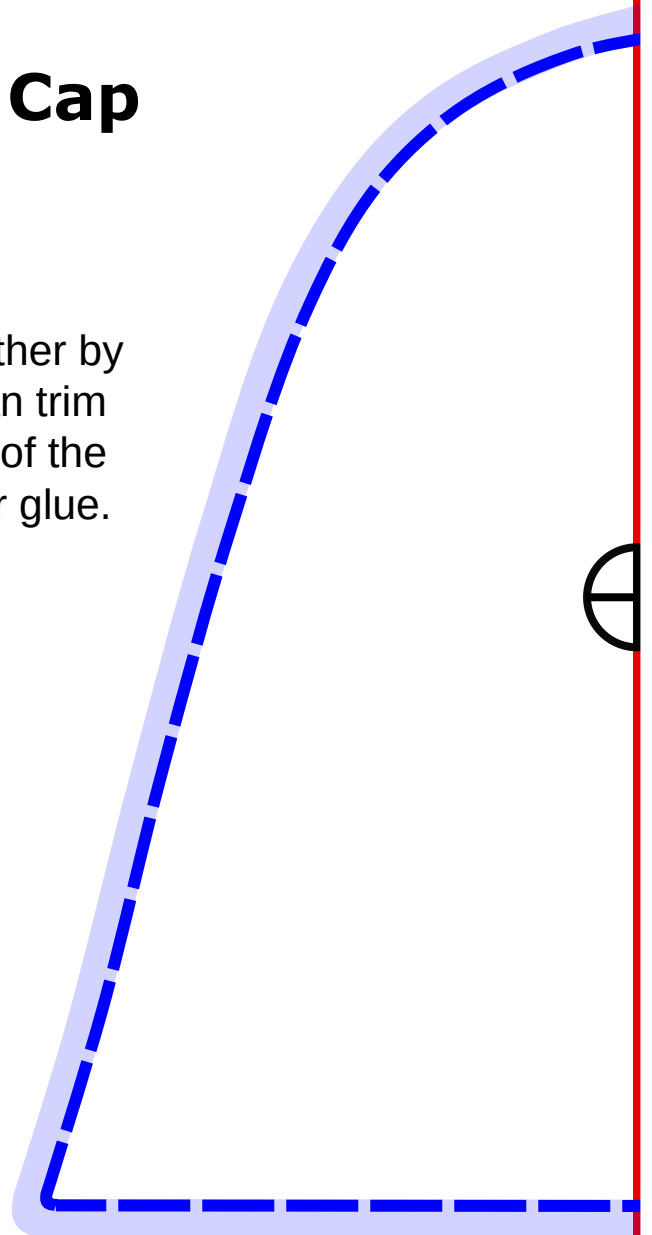
Designed by Tori Capes, Certified Milliner
for www.madcaphats.com and [@madcaphats](https://www.youtube.com/@madcaphats) on
YouTube. Copyright 2022

Questions? Contact us at madcaphats@gmail.com

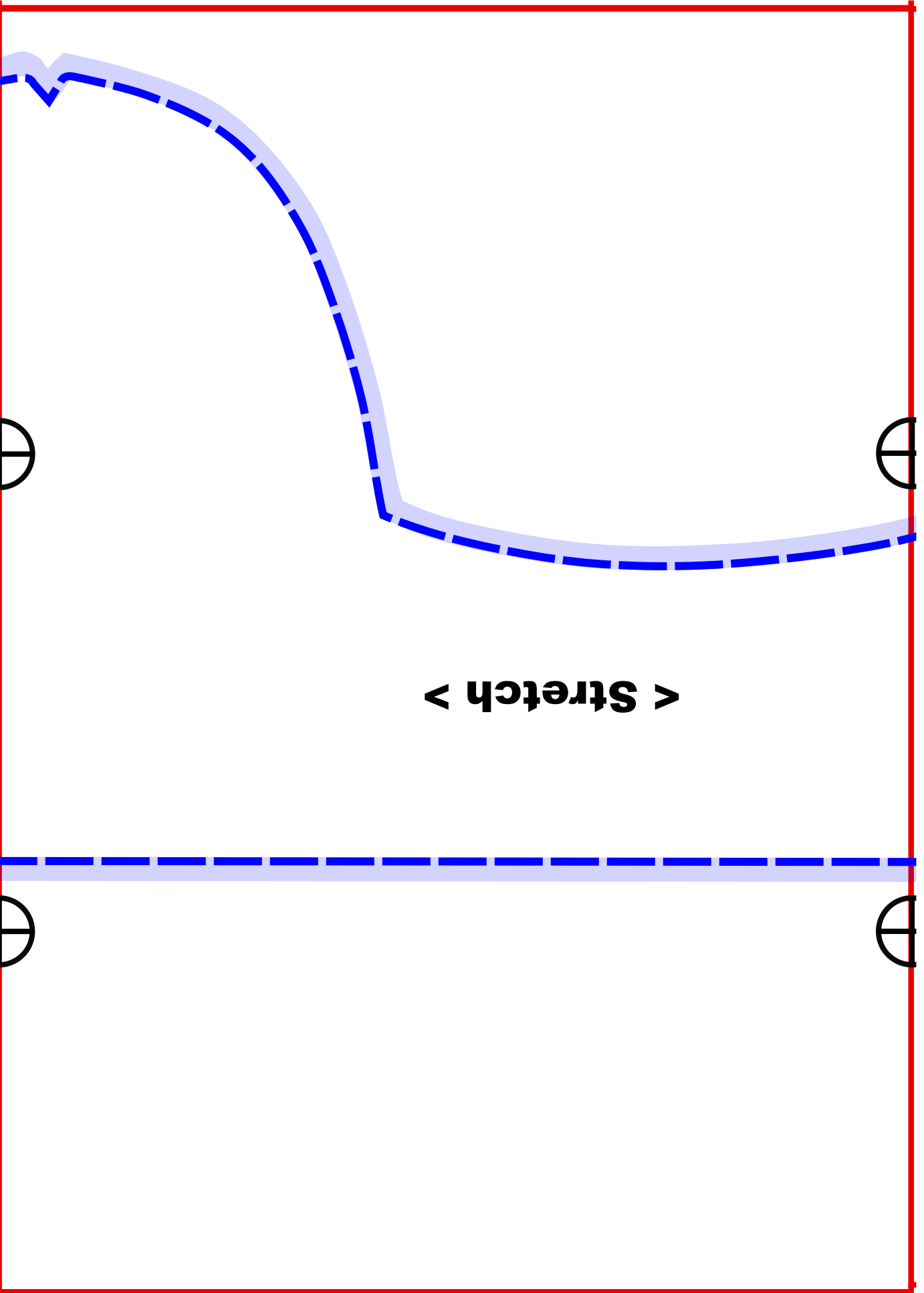
Winter Canada Cap

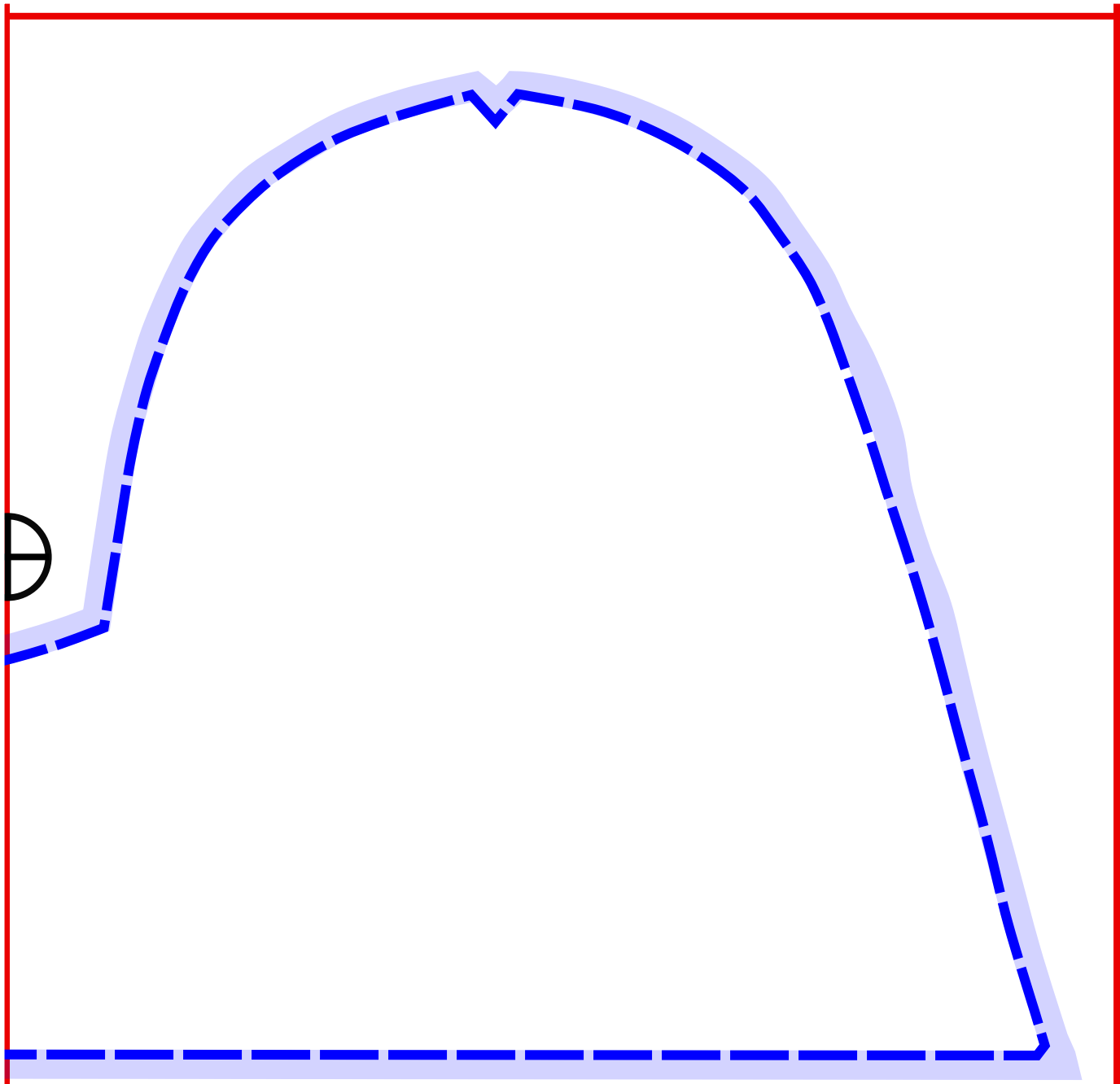
Earflap Cuff

Join these three pages together by matching the circles. You can trim to the red lines on the sides of the middle page and use tape or glue.



Cut 2 pieces of fabric. In the video I used a red and black buffalo check for the outside layer and plush sherpa fleece for the lining layer. The outside shadow edge is to help you cut the piece larger if needed for a wider seam. A seam width of 3/8" or 1 cm is built in to the dotted line of the pattern piece.

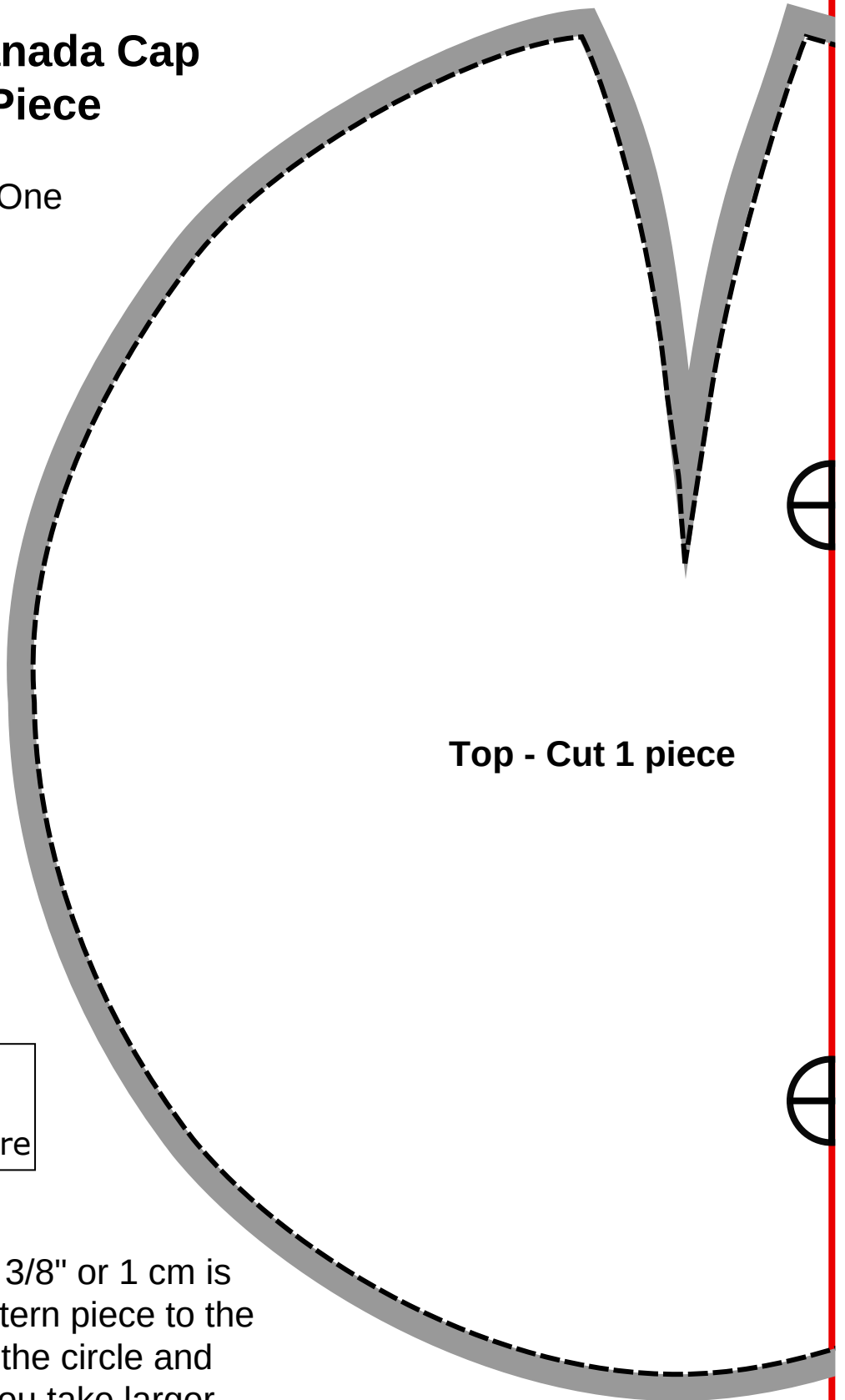




Designed by Tori Capes, Certified Milliner
for www.madcaphats.com and @madcaphats on YouTube.
Copyright 2022. Questions contact us a madcaphats@gmail.com

Winter Canada Cap Top Piece

Cut One

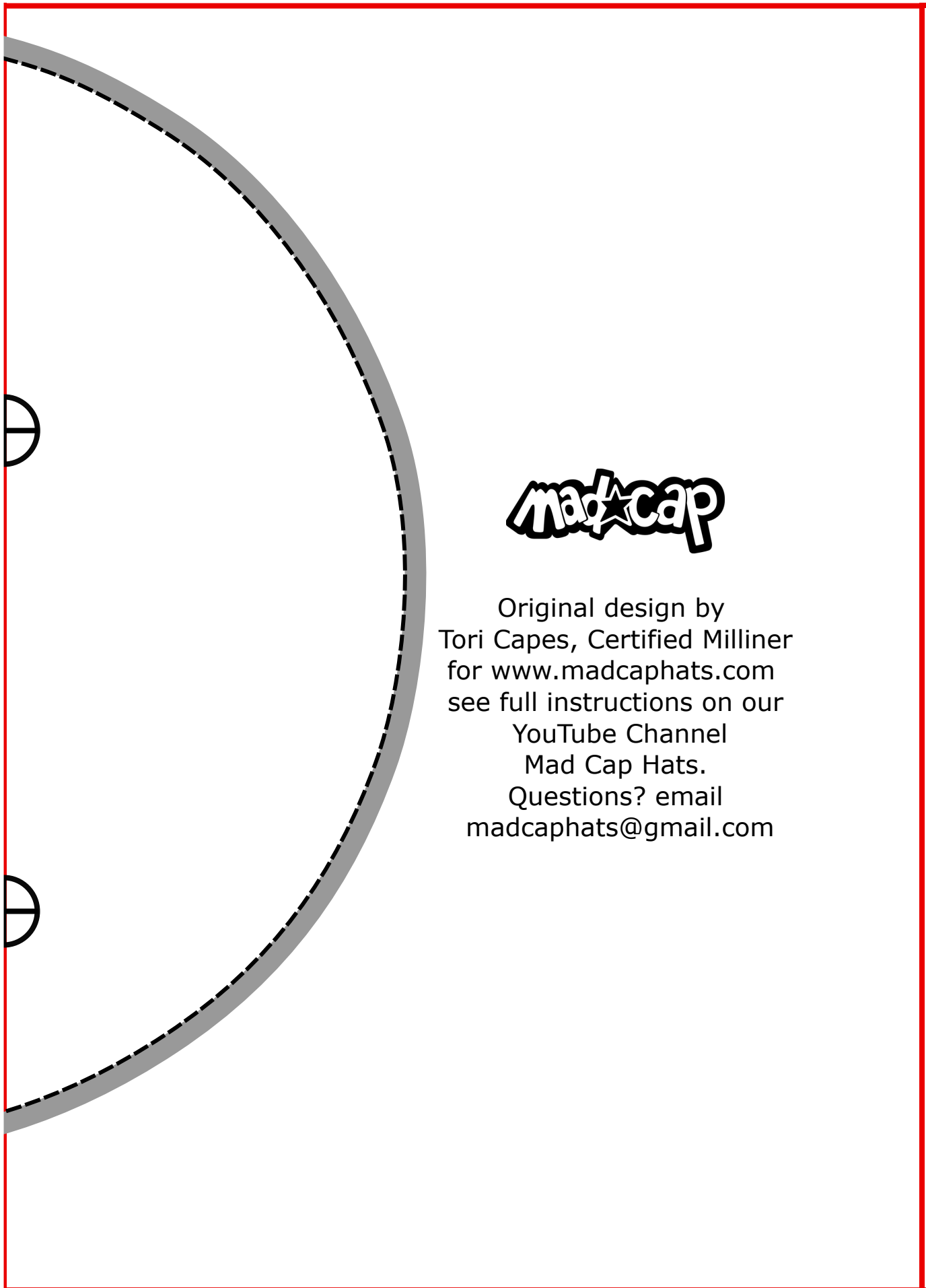


Top - Cut 1 piece

1" side
square.

2 cm
side
square

A seam width of 3/8" or 1 cm is built into this pattern piece to the dotted line. Join the circle and tape or glue. If you take larger seam width, cut outside of the shaded border.



Original design by
Tori Capes, Certified Milliner
for www.madcaphats.com
see full instructions on our
YouTube Channel
Mad Cap Hats.
Questions? email
madcaphats@gmail.com