

# Medium Sunblo

**1**

Cut 1 for each layer

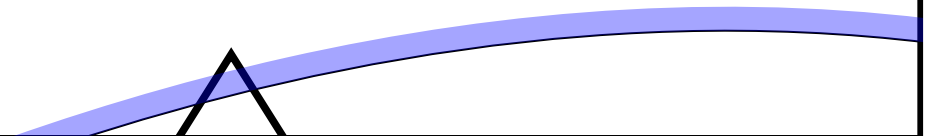
Check this for size accuracy



5 inches



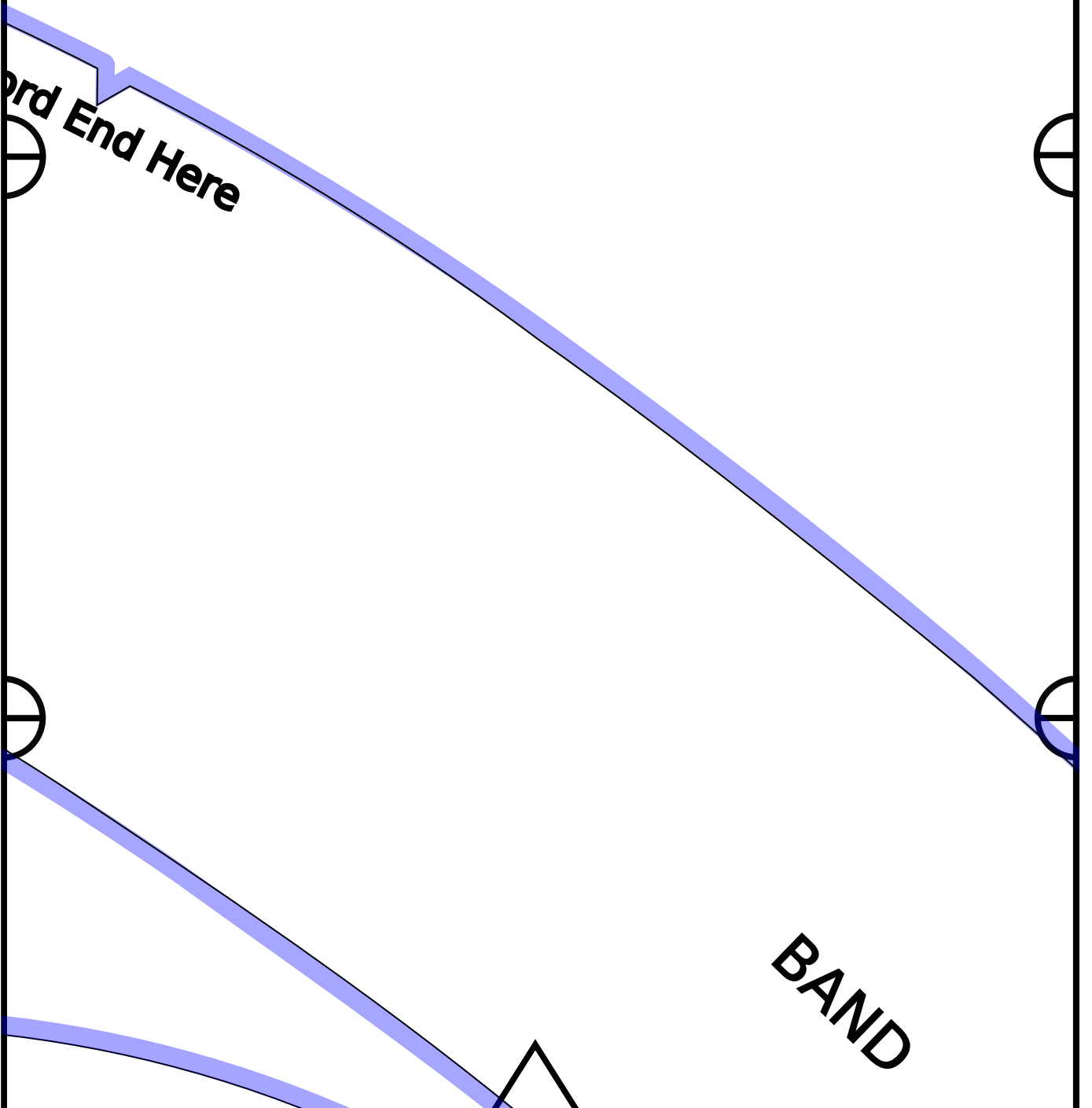
10cm



# Quicker Free Pattern by Mad Cat

# 2

Watch the complete Video  
<https://youtu.be/qQ8z16XLppc>



# Cap Hats Copyright 2023

# 3



Original design by  
Tori Capes, Certified Milliner  
for [www.madcaphats.com](http://www.madcaphats.com)  
see full instructions on our  
YouTube Channel  
Mad Cap Hats.  
Questions? email  
[madcaphats@gmail.com](mailto:madcaphats@gmail.com)

Brim Edge is  $35 \frac{3}{8}$ " or 90 cm on each  
long side and is  $3 \frac{7}{8}$ " or 10 cm deep  
with 45 degree angle ends. Check  
out the video at the 16:50 time stamp  
for more info about cutting the brim  
edge. Cord length is 1 yard or 90 cm  
and then trimmed to taste.

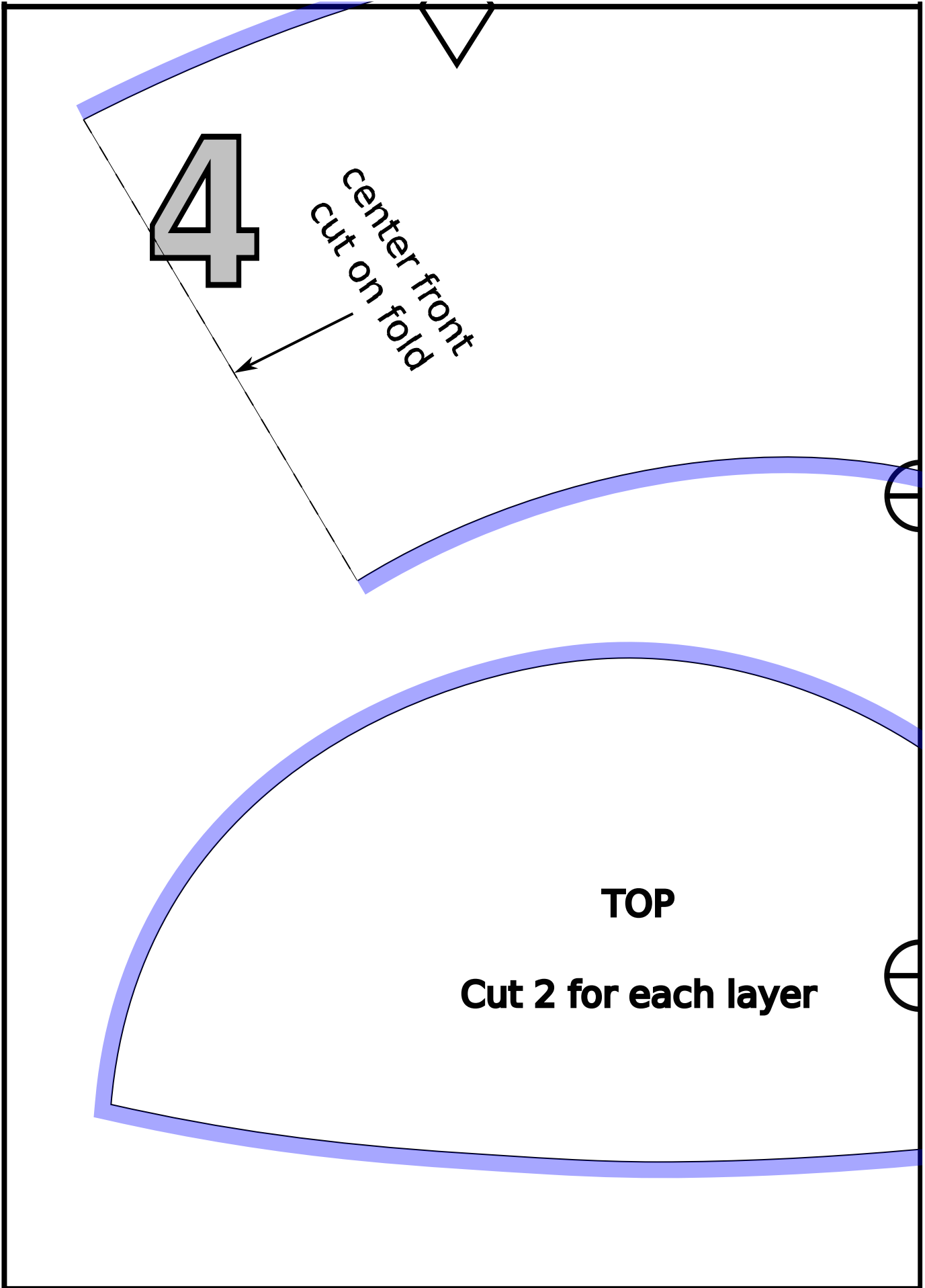


**4**

center front  
cut on fold

**TOP**

**Cut 2 for each layer**





5



**cut on fold**

**1 full piece top brim**

**1 full piece under brim**

**1 full piece 'HeatnBond'**

