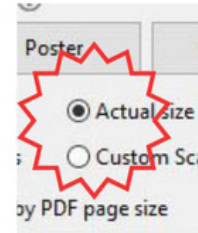
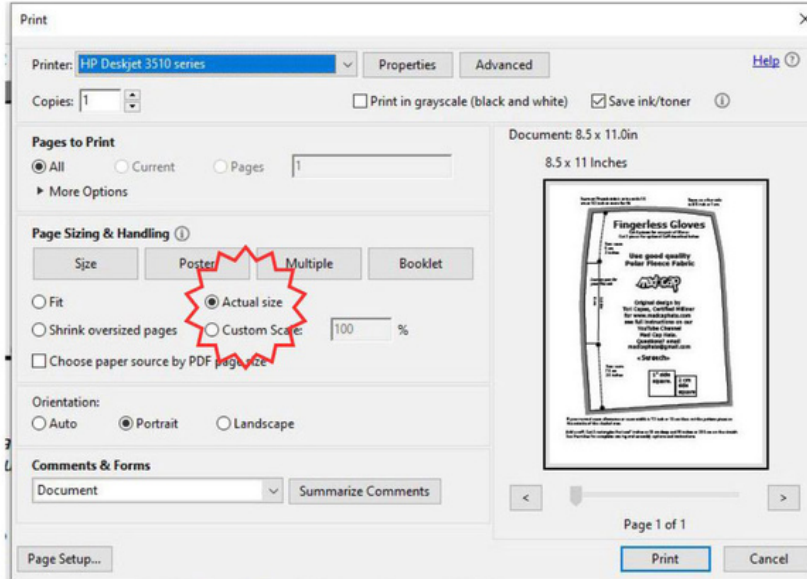


Before you Start ...The 'Read This' File



Important!

Please check your printer settings! Select "Actual" Size.

"Fit" will cause the pieces to print too small. Do this for both the Letter and A4 paper sizes.

IMPORTANT - Make sure your printer page size is set to print "Actual" or "Custom Size 100%". Pages are designed in Portrait Orientation. Please do not print "In Fit to Page" mode as that setting will result in a small pattern and a finished hat that is about one size smaller than you expected.

Print the page that has the measure lines to check the printer accuracy. For this pattern the measuring lines are on page 1 of the pattern set.

One line is 10 cm long. One line is 5 inches long.

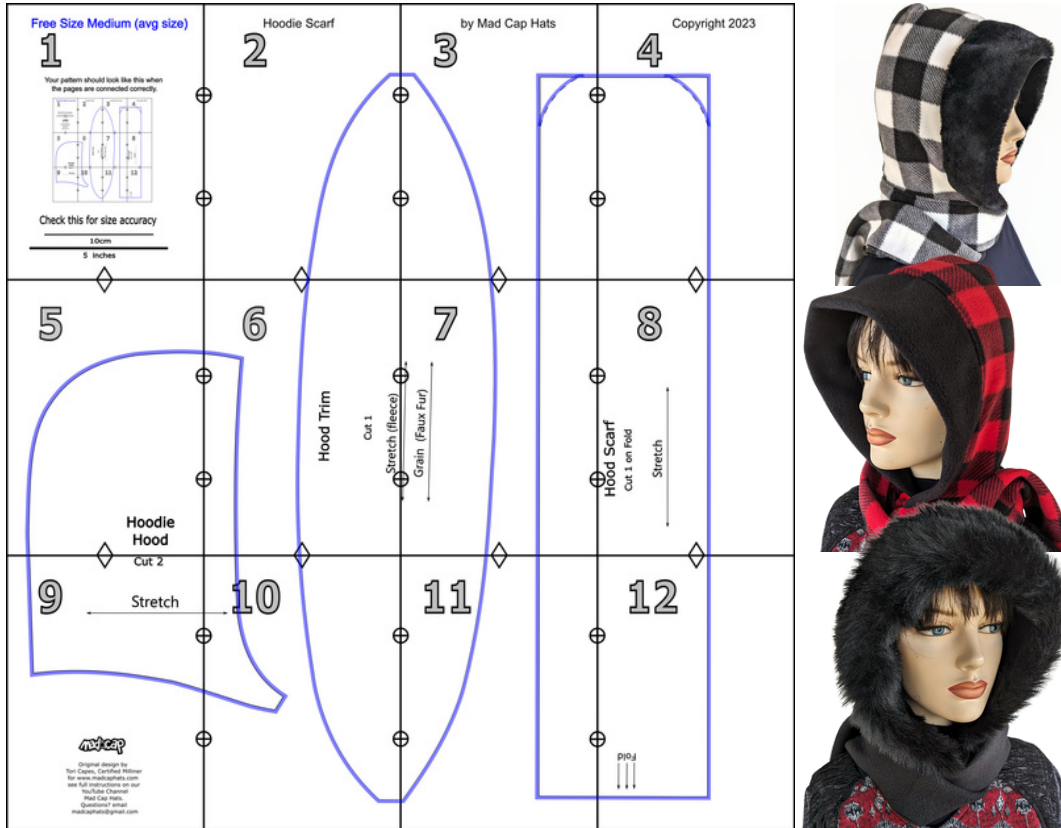
If the lines measure up, you are good to print the full pattern! Your printer output is set correctly for this pattern. Settings needed are for the pages to print in Actual Size or Custom Size, 100%. Now you can go ahead and print all of the pages of the pattern set.

You can choose to print in black and white, greyscale or color. Save on your computer and reprint as needed.

Fold or trim to the edges of the black border boxes on each page to match circles and diamonds of adjoining pages. Tape or glue this paper pattern together before cutting your fabric. Save on your computer and reprint as needed. This complimentary pattern is our Size medium (average woman 22.5 "/57.5-58 cm). We recommend using a good quality Polar Fleece Fabric to make the Hoodie Scarf. IT has been designed for fleece. Use a fleece that has a velour pill resistant finish especially for the lining piece. Seam width is 3/8" built into the black outline while the outside edge of the blue shadow will increase your seam width to 1/2" or 12-13 mm.

**Please reach out if you any questions, problems with downloads, etc etc!
Tori at madcaphats@gmail.com**

Assembling the Pattern Pieces for the Winter Hoodie Scarf



Trim or fold to black boxes inside each page and assemble to your pattern resembles the photo above. Match circle halves and diamond halves. This pattern set is two rows of four pages for a total of eight pages.

The instructions for the Hoodie Scarf are in the step by step tutorial on the Mad Cap Hats YouTube Channel.

The Video is located at this address - <https://youtu.be/u68Com4ZaiA>

There will be a full version of this pattern in 5 head sizes. The full pattern will also include files for cutting with a projector.

Check out the supply links for the Hoodie Scarf on our website at <https://madcaphats.com/pages/the-hoodie-scarf-winter-sewing-business-winner>

**Please reach out if you any questions, problems with downloads, etc etc!
Tori at madcaphats@gmail.com**

Mad Cap Hats ... How to determine Head Size ...

Size is Important!

One of the secrets to finding the perfect hat, and sewing the perfect hat, is knowing what your head size is. Measure circumference for your head to determine the size of Hoodie Scarf you will need. Although this is a relaxed fit, a loose fit, it is always helpful to know your head size.

About head size ... The Average head size for a women is 22.5 inches or 57.5 cm and for a man it is 23.5 inches or 60 cm. That leave the other half of us not in the average size range.

Many of us do not fit these average measurement but the hat industry continues to use them. You can cut the pattern pieces to customize your fit and if you need help with this, send me an email and I can help you with this.
madcaphats@gmail.com

So your first task is to measure your head.

Head Size:

To measure a head, a fabric tape measure should be placed around the head, where a hat would sit. Make sure the tape is comfortably positioned and not too tight. This means the tape should be just above the eyebrows and just above the top of the ears.

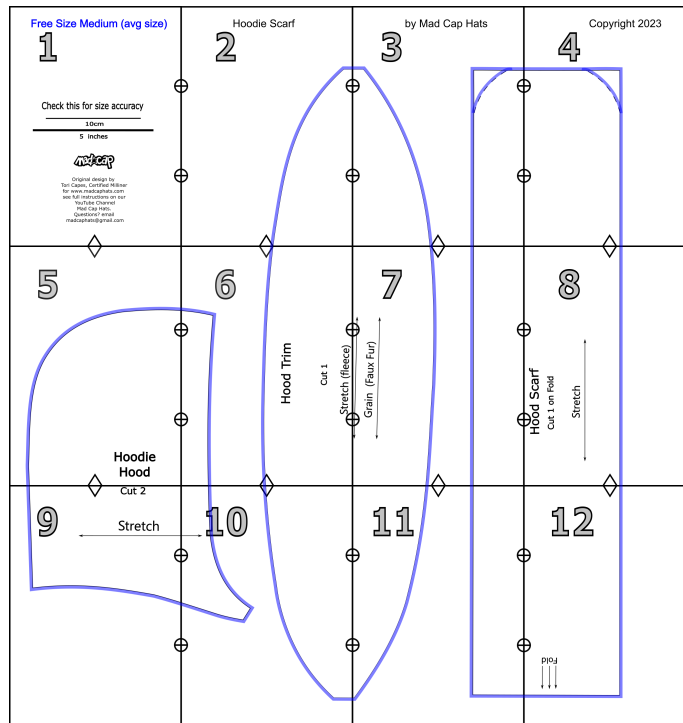


Head Size_____

Free Size Medium (avg size)

1

Your pattern should look like this when the pages are connected correctly.



Check this for size accuracy

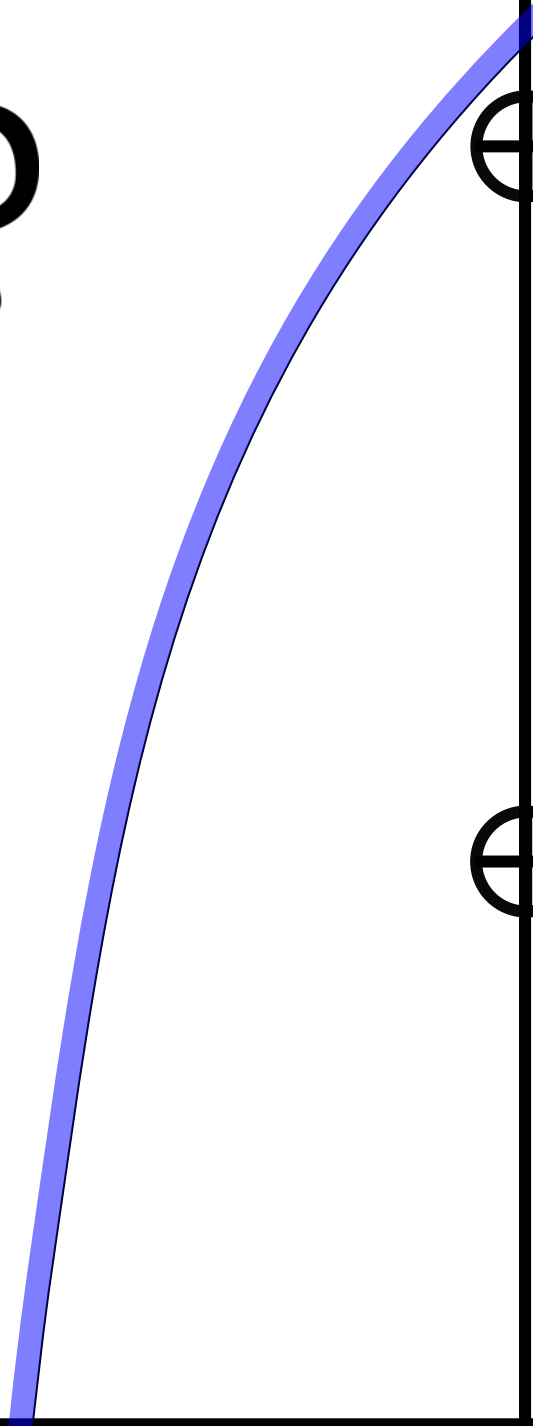


Hoodie Scarf

2

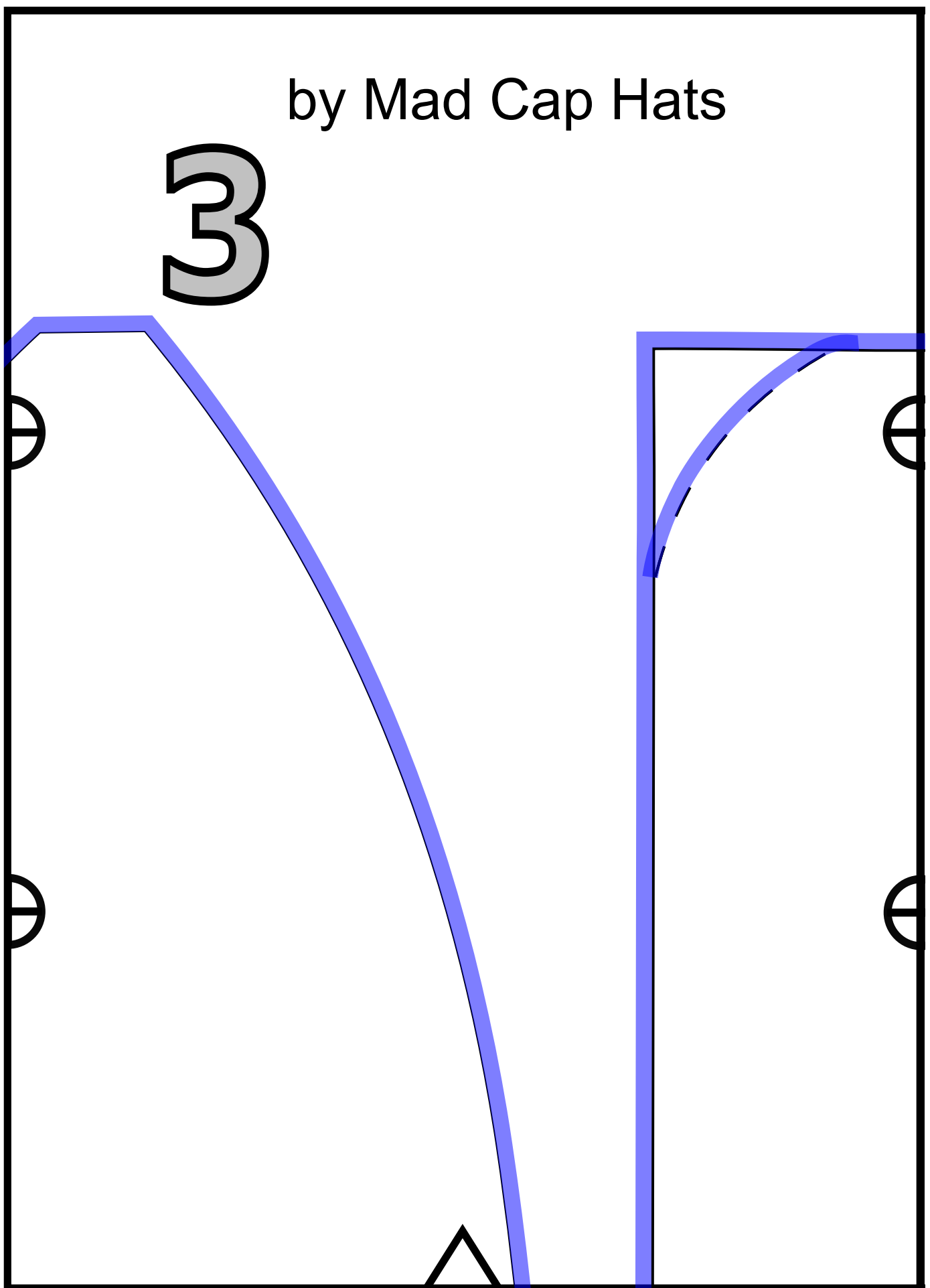


Original design by
Tori Capes, Certified Milliner
for www.madcaphats.com
see full instructions on our
YouTube Channel
Mad Cap Hats.
Questions? email
madcaphats@gmail.com



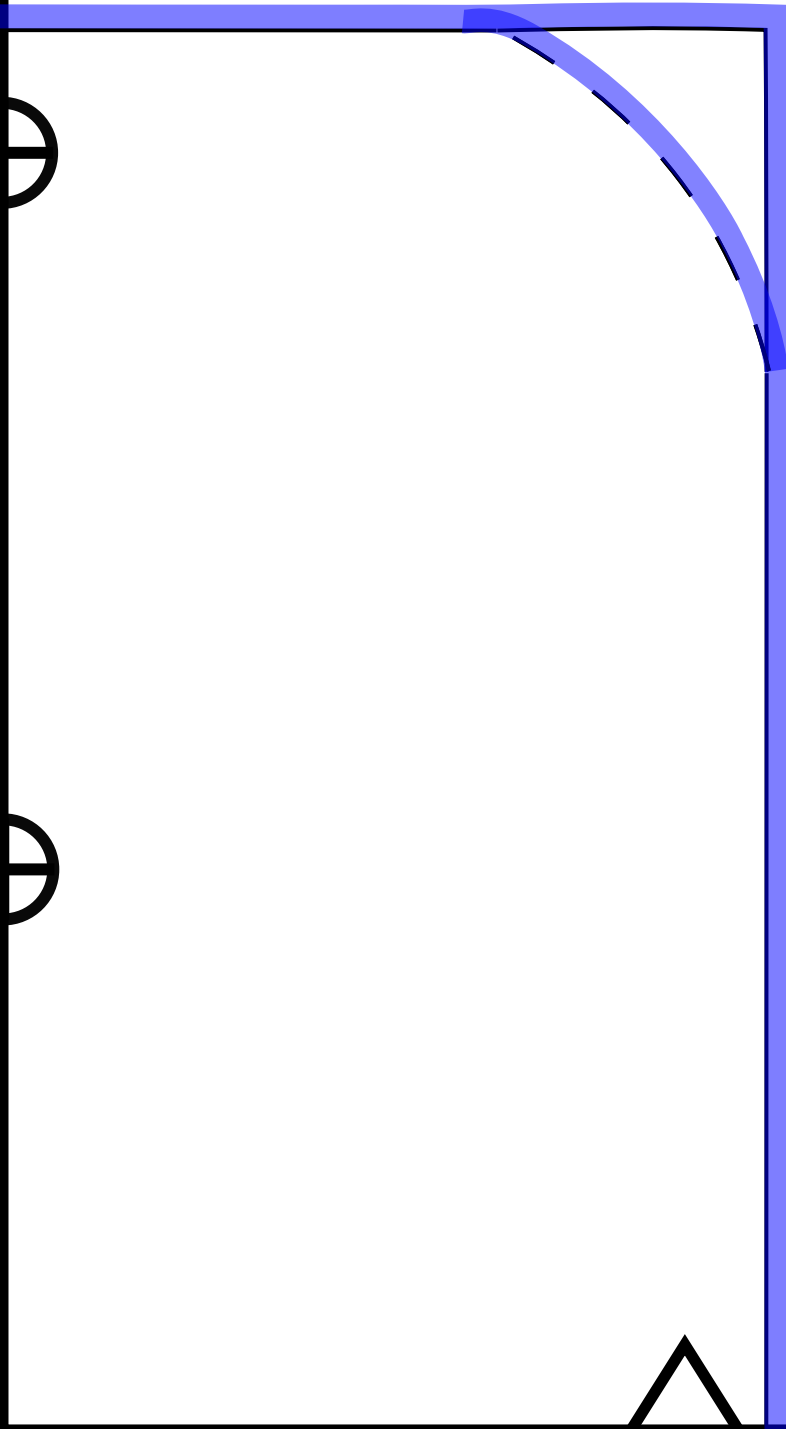
by Mad Cap Hats

3



Copyright 2023

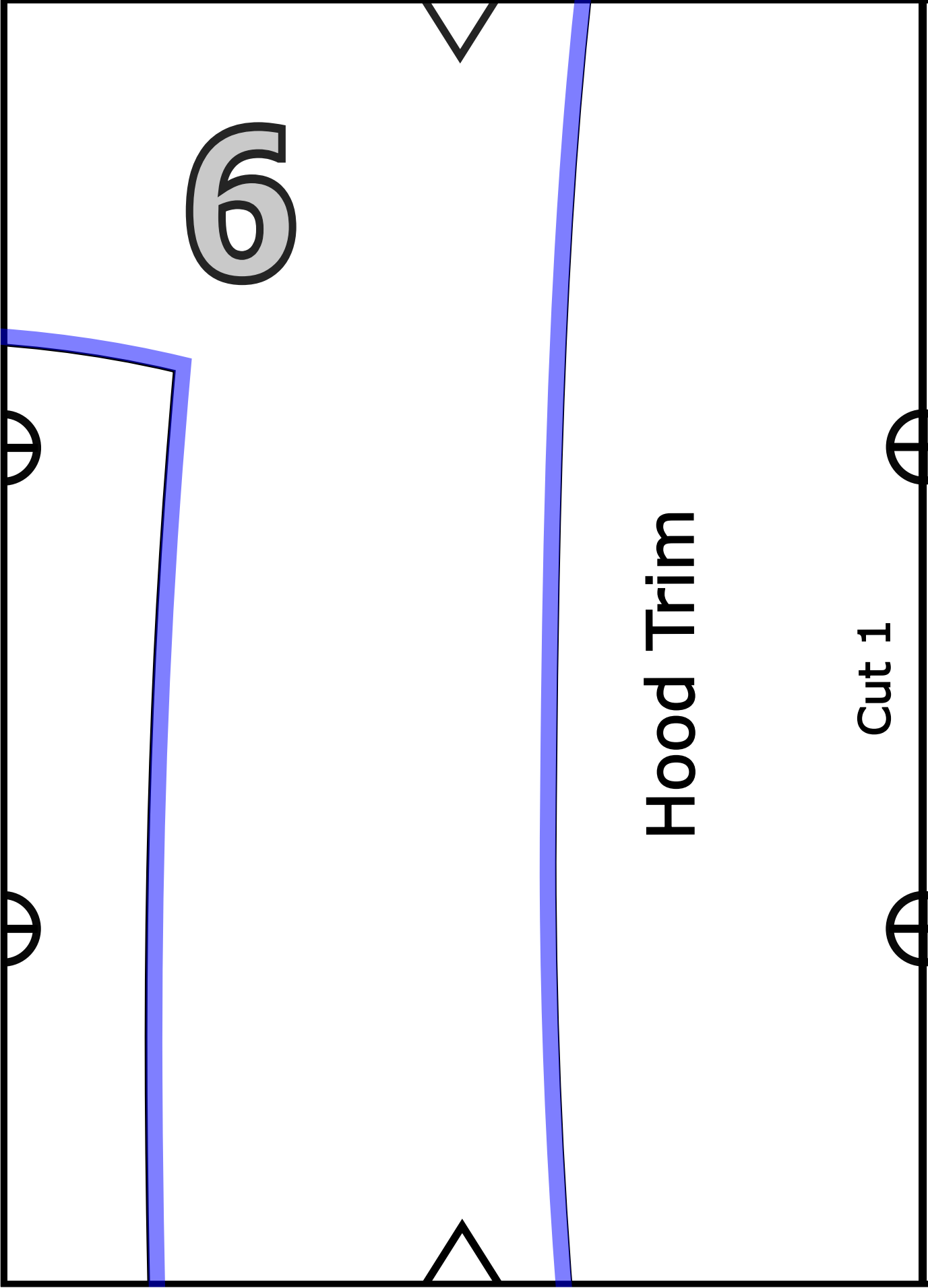
4

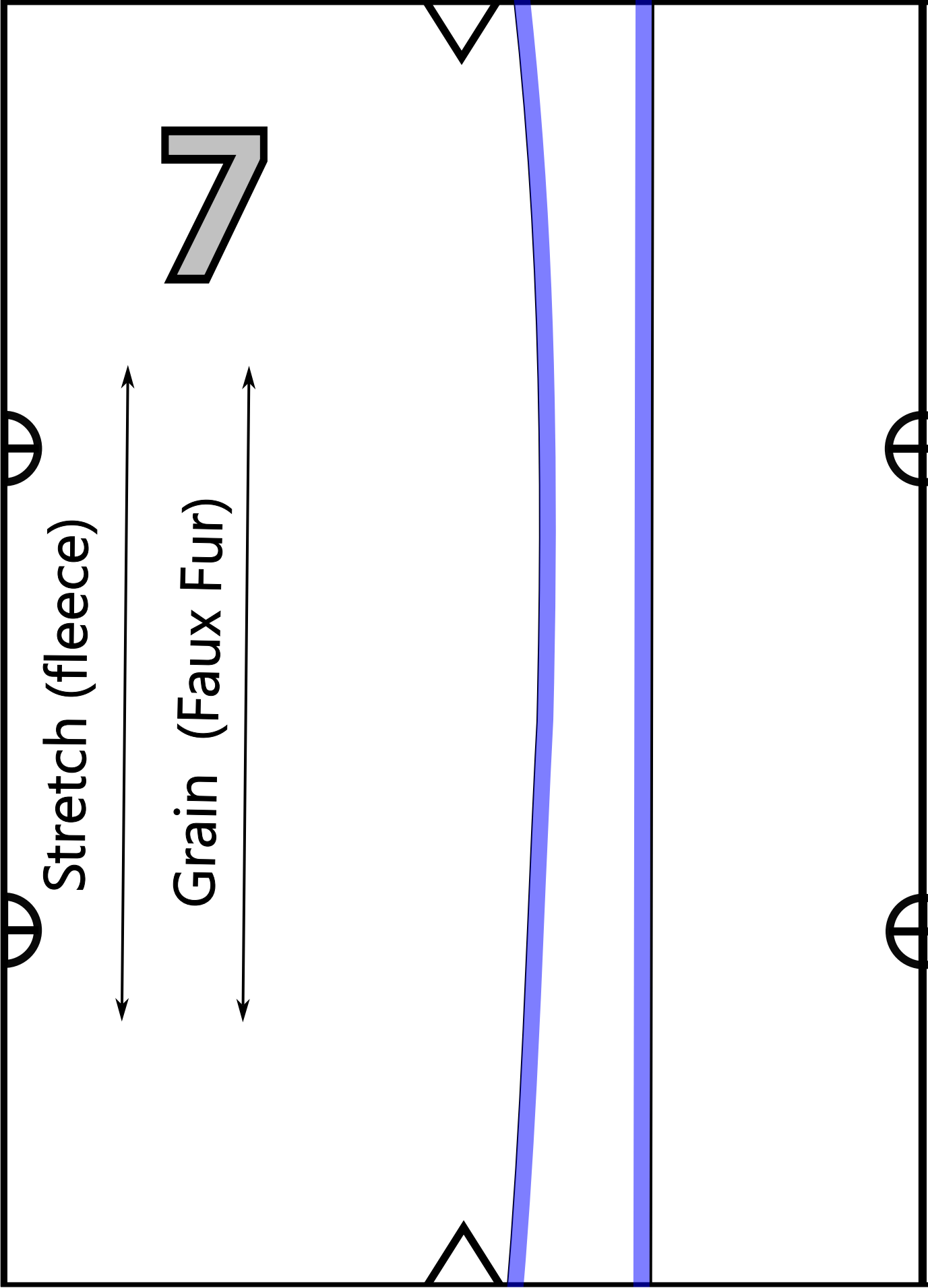


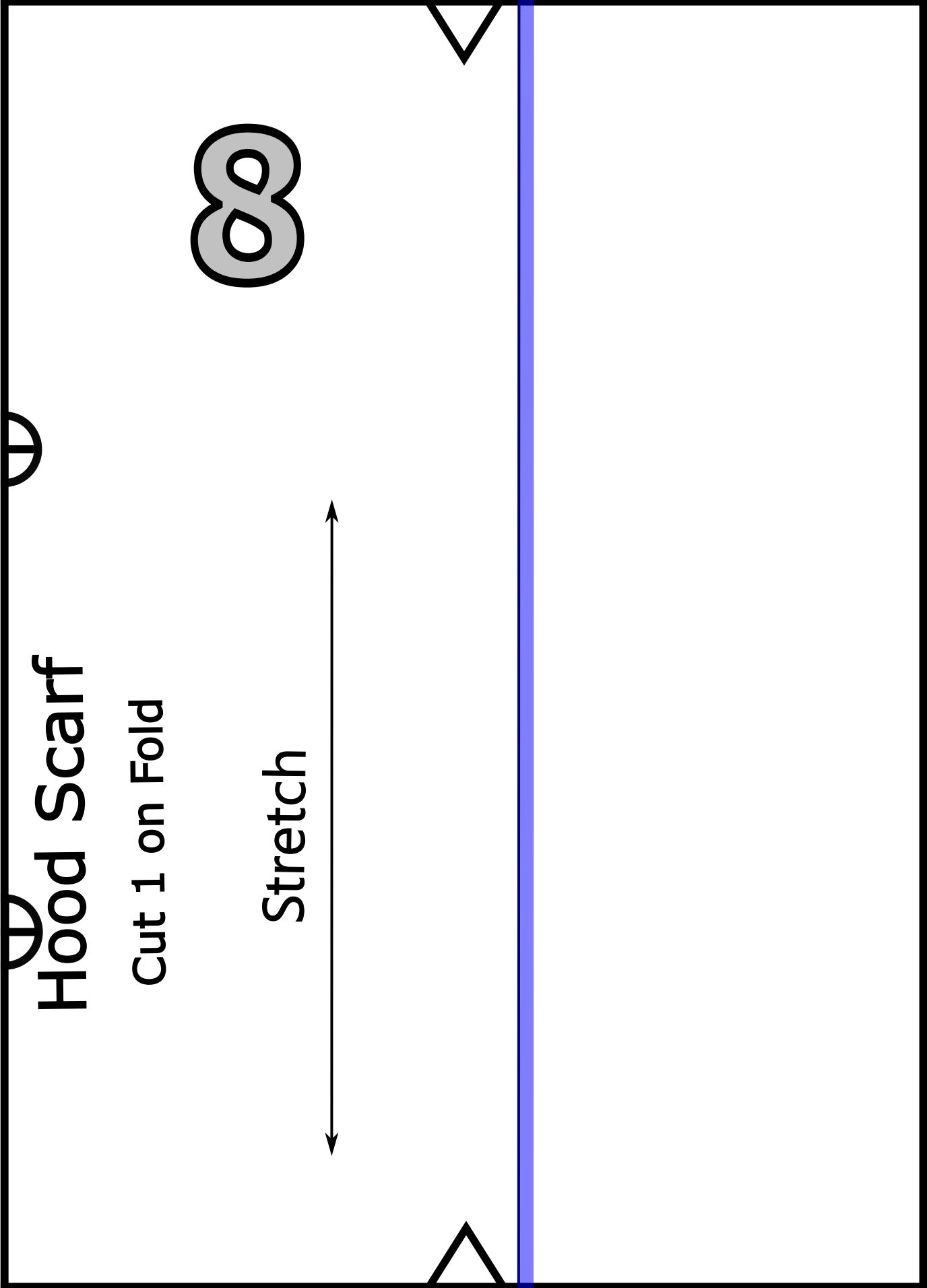
5

**Hoodie
Hood**









Hood Scarf

Cut 1 on Fold

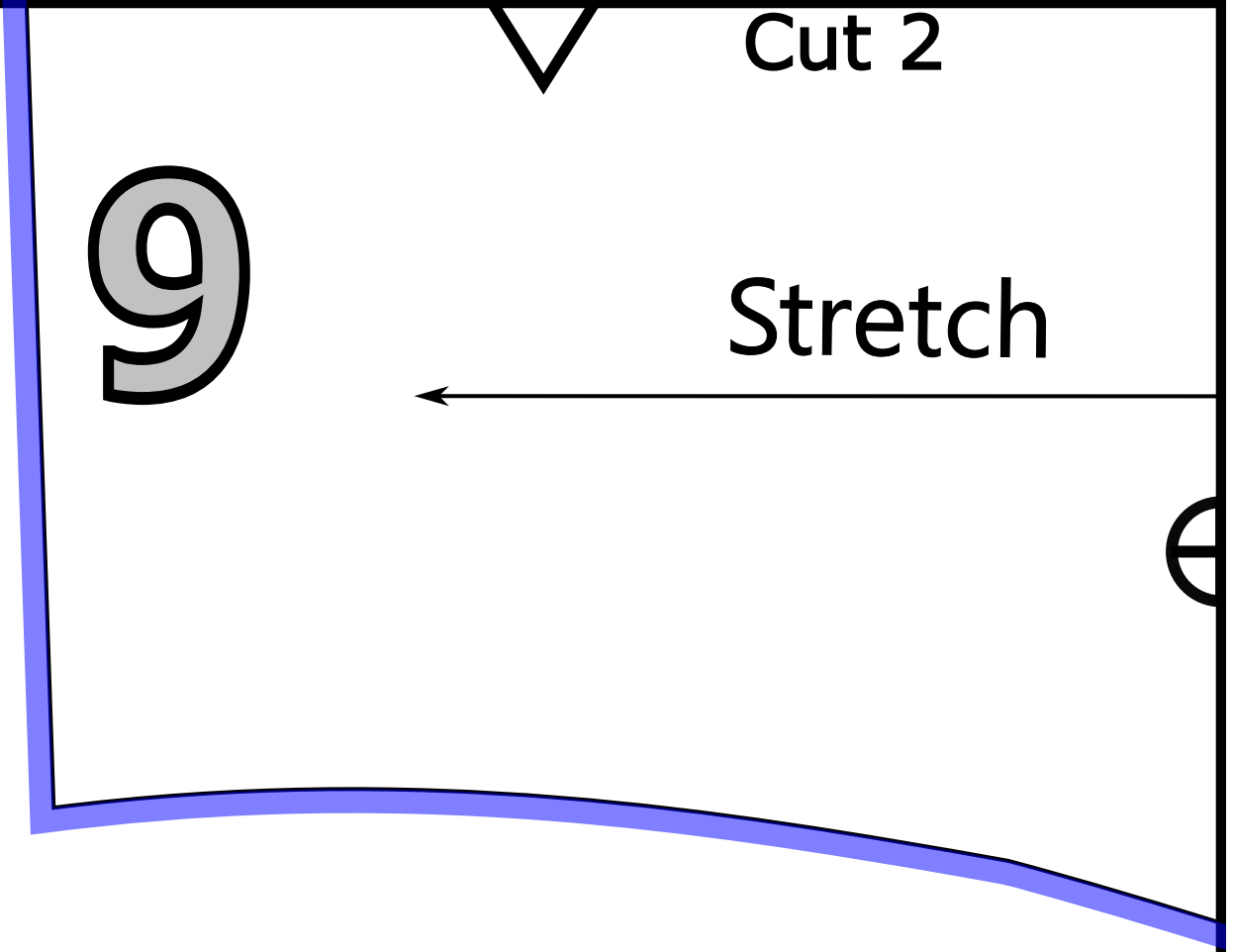
Stretch

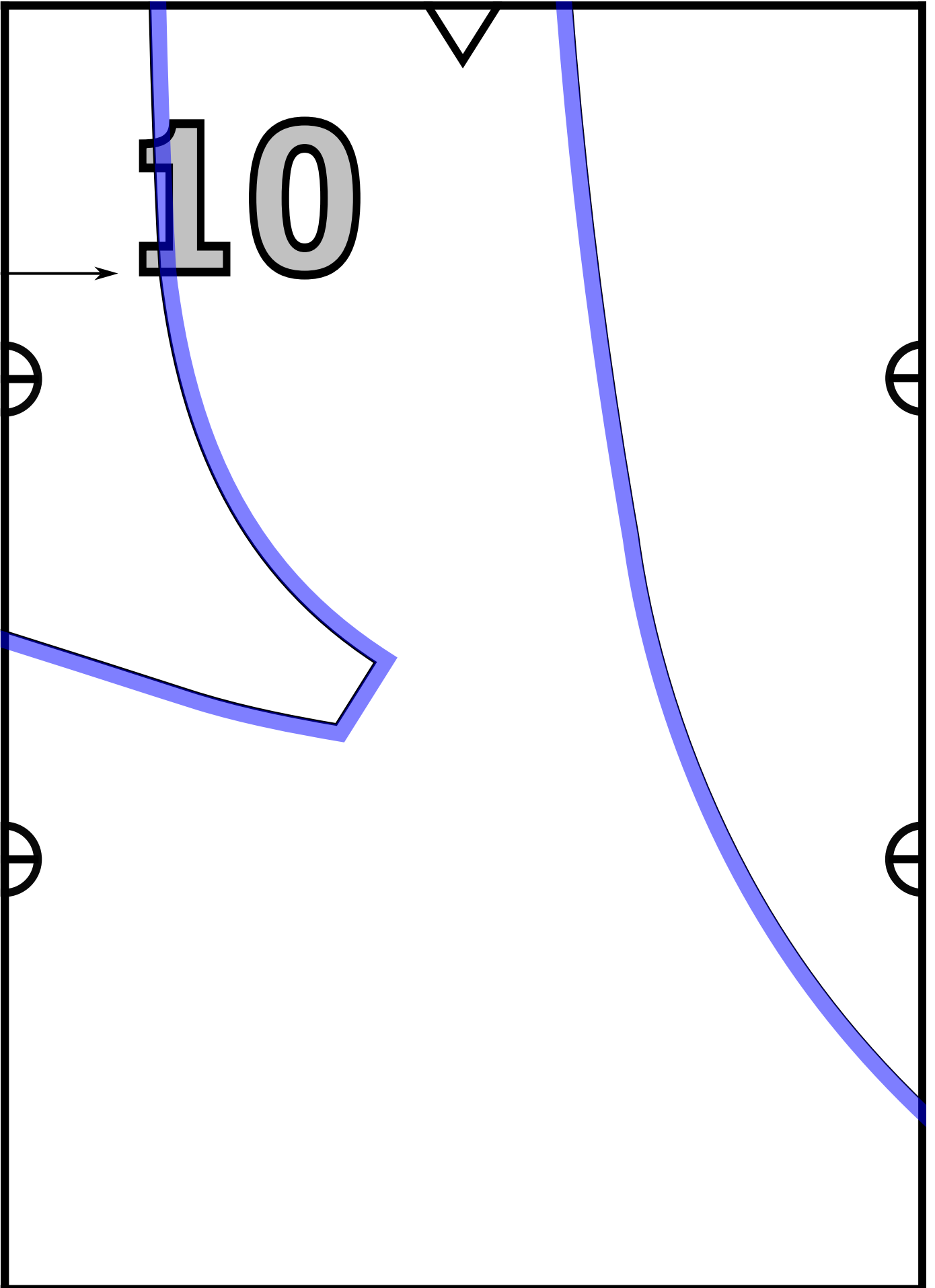
∞

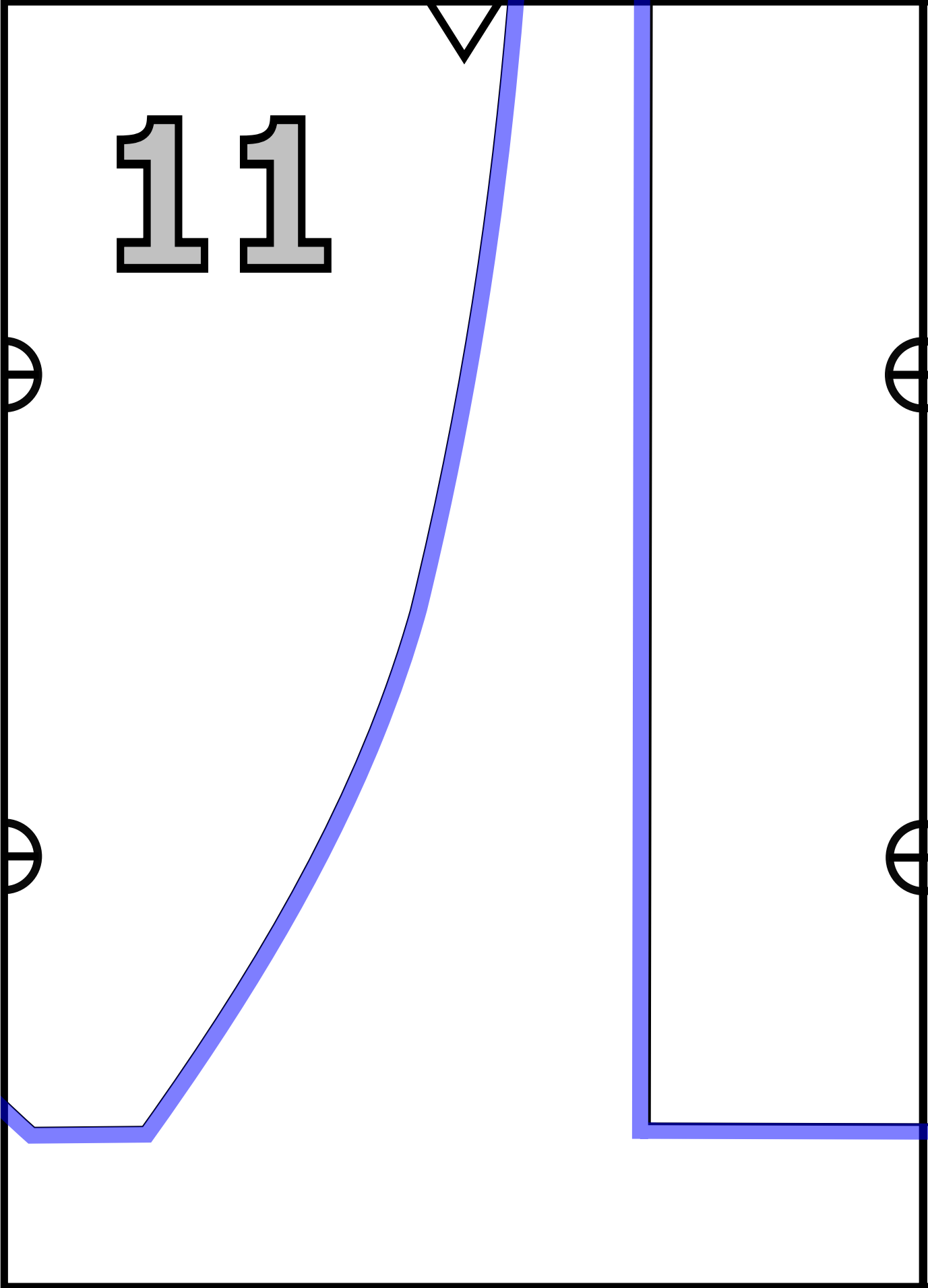
Cut 2

9

Stretch







12



Fold

