

1-Top

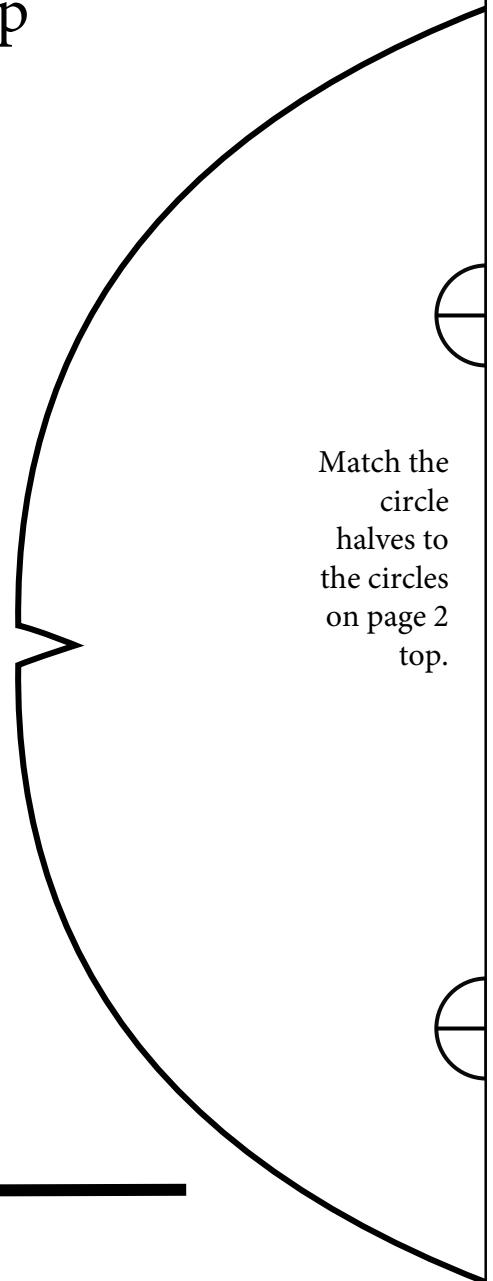
The Classic Men's Flat Cap
Top, Band and Visor set
Size Large or Men's
Average Size
23.5" or 60 cm head size.

Seam wide of 3/8" or 1 cm is built into this pattern outline. Cut a little larger if you need a larger seam allowance.

Please make sure your page settings for printing are set to "Actual Size" as this PDF has been set up to print in both Letter and A4 automatically. Printing in "Fit to Page" or other settings will result in an incorrect Pattern.



Use this line to measure the accuracy of your printer output.



Match the circle halves to the circles on page 2 top.

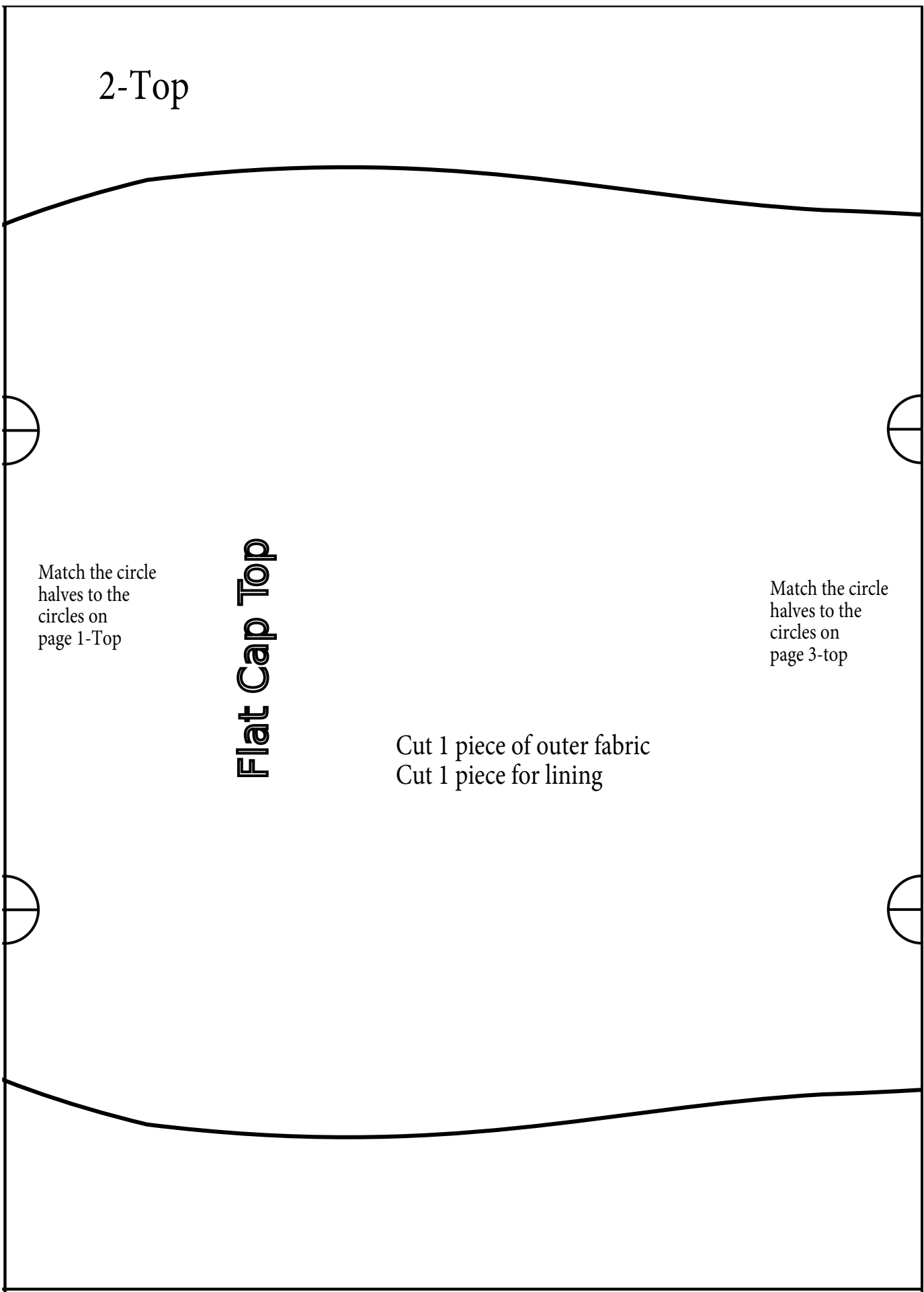
2-Top

Flat Cap Top

Match the circle halves to the circles on page 1-Top

Match the circle halves to the circles on page 3-top

Cut 1 piece of outer fabric
Cut 1 piece for lining



3-Top

Back Corner

Original Design by
Tori Capes,
Certified Milliner
for Mad Cap Hats

www.madcaphats.com



Match the
circle
halves
to the
circles on
page 2-top



Back Corner



1-band

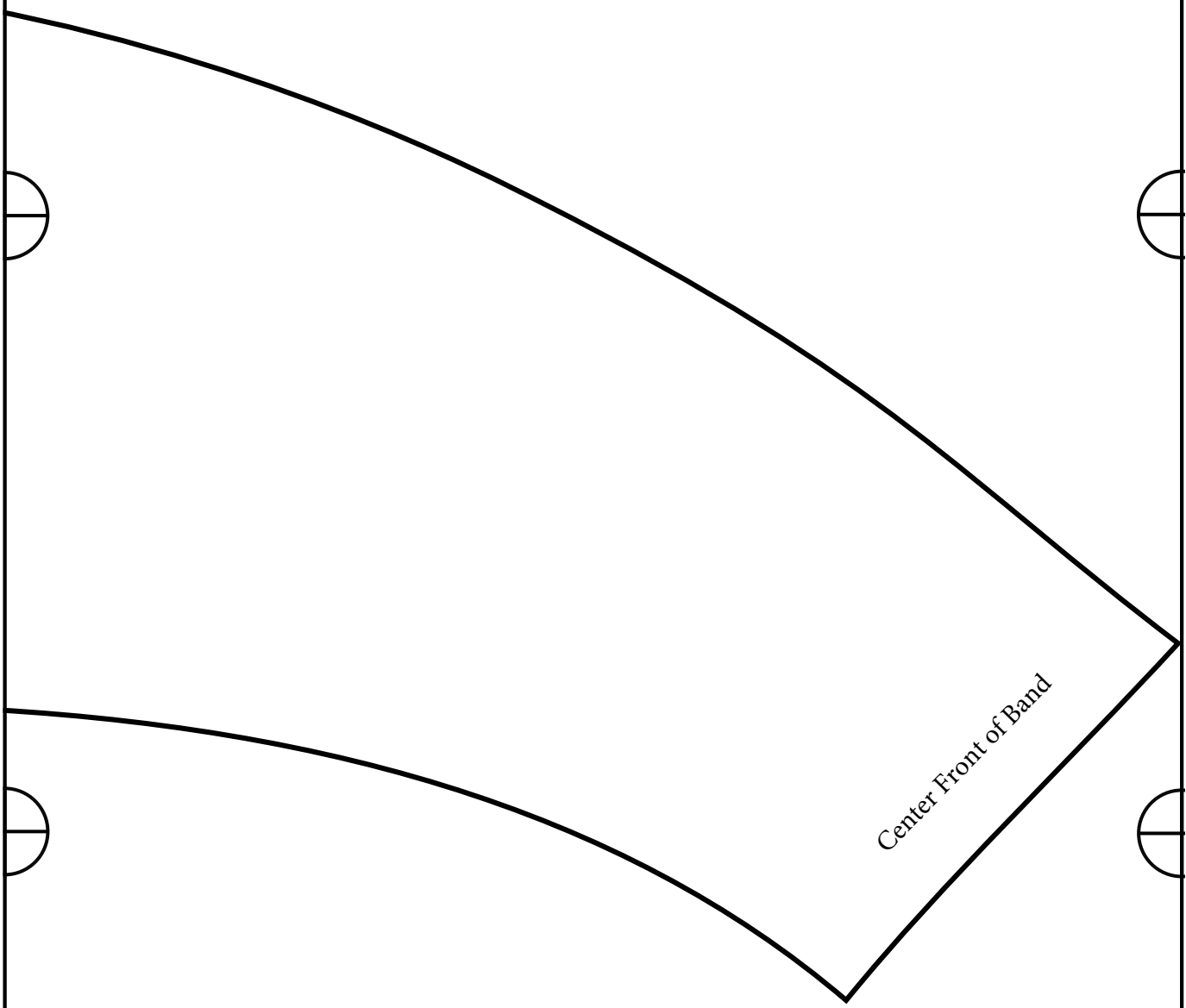
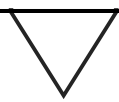
Cut 2 pieces of outer fabric
Cut 2 pieces for lining

Back
corner

See the full how to make this hat on our YouTube Channel, Mad Cap Hats.
Video is located at this web address
<https://youtu.be/6f6zzI-1Iok>

Contact us at madcaphats@gmail.com if you have questions.
You can also comment under the video and we will respond.
See Video Description on YouTube for supplies and links to materials used
in the video to make this cap.

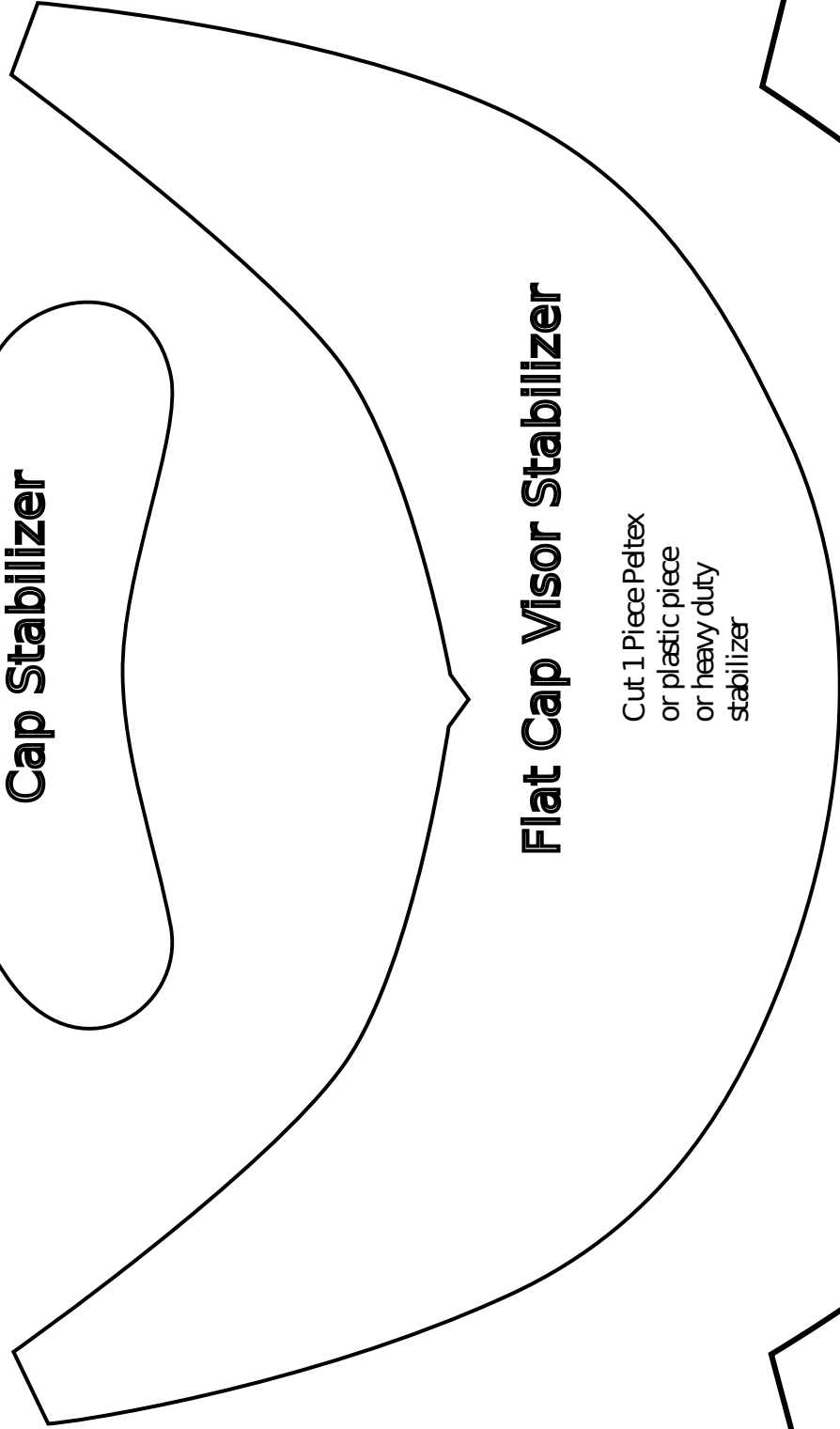
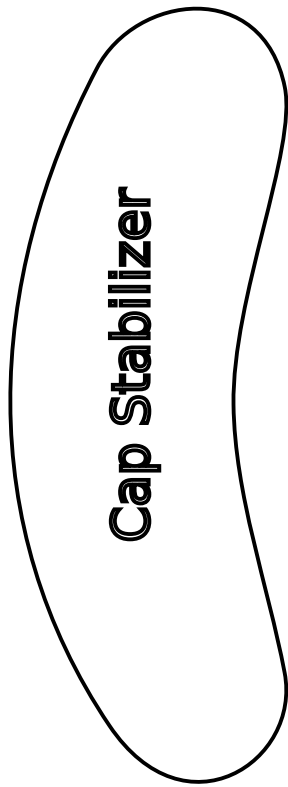
2 - band



Center Front of Band

Sweatband requires a rectangle cut on the Bias (45 degree angle)
Measurements for the rectangle for this pattern size is 24.5
inches long by 3.5 inches deep. In cm that is 62.5 cm long by 9
cm deep.

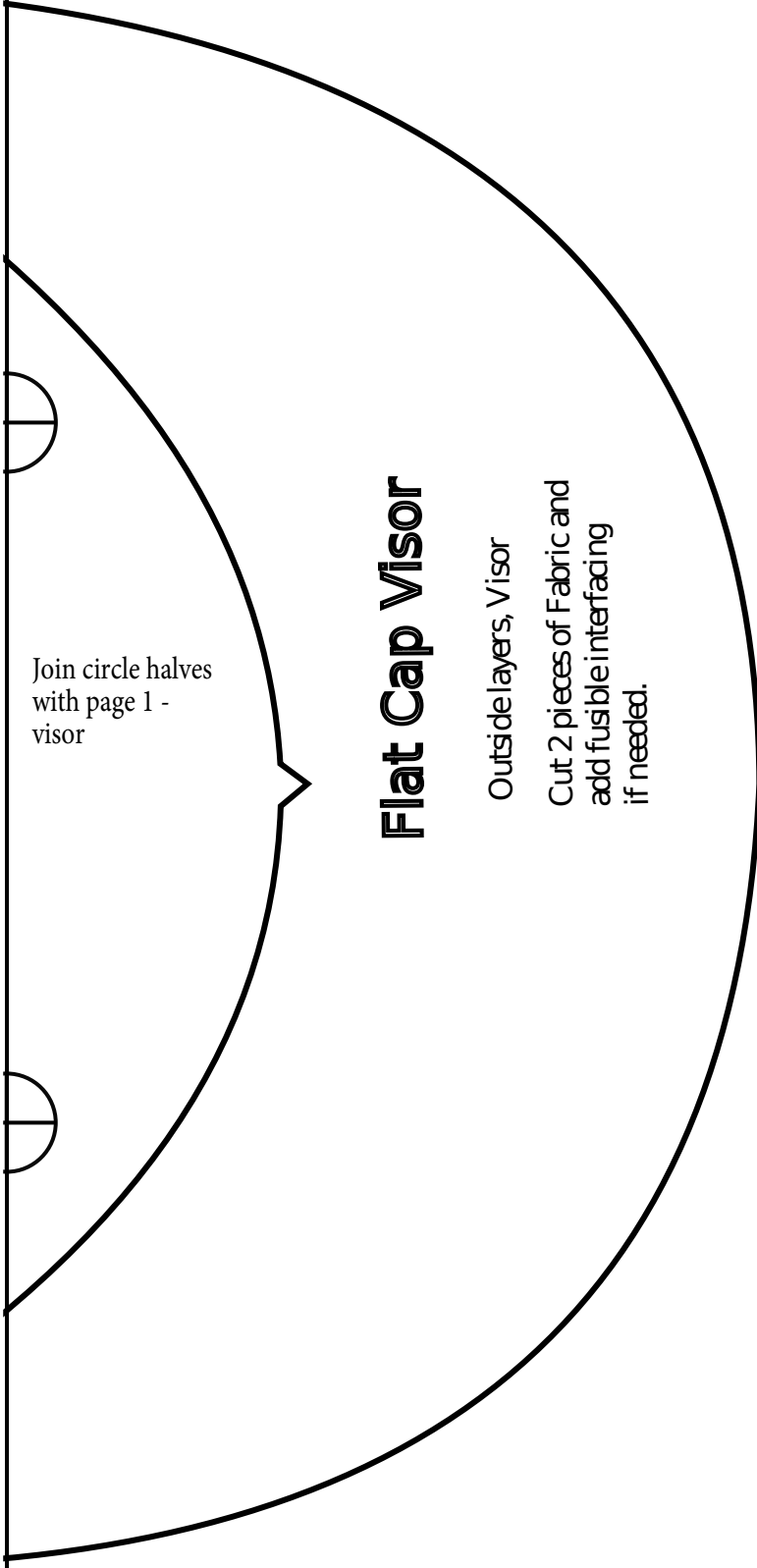
1 - Visor



join the
circles
with
page
2-visor



2 - Visor



Join circle halves
with page 1 -
visor

Flat Cap Visor

Outside layers, Visor

Cut 2 pieces of Fabric and
add fusible interfacing
if needed.