



FLINT INSTRUMENT DESIGN

FID CONTINUOUS MAGAZINE



OWNERS MANUAL



| TABLE OF CONTENTS |

WARNINGS	3
EXPLODED VIEW	4
PREPARATION	5
LOADING	6
OPERATION	7
DISASSEMBLY, CLEANING & MAINTENANCE	8
WARRANTY & REPAIRS	9
TROUBLESHOOTING	10

| WARNINGS |

WARNING/LIABILITY STATEMENT

THIS MAGAZINE IS NOT A TOY AND IS MANUFACTURED BY FLINT INSTRUMENT DESIGN, WITH THE UNDERSTANDING THAT THE PURCHASER ASSUMES ALL LIABILITY FROM UNSAFE HANDLING OR ANY ACTION THAT CONSTITUTES A VIOLATION OF ANY APPLICABLE LAWS OR REGULATIONS. FLINT INSTRUMENT DESIGN, SHALL NOT BE LIABLE FOR PERSONAL INJURY, LOSS OF PROPERTY OR LIFE RESULTING FROM THE USE OF THIS PRODUCT UNDER ANY CIRCUMSTANCES, INCLUDING ANY INTENTIONAL, RECKLESS, NEGLIGENT OR ACCIDENTAL DISCHARGES.

ALL INFORMATION CONTAINED IN THIS MANUAL IS SUBJECT TO CHANGE WITHOUT NOTICE. FLINT INSTRUMENT DESIGN, RESERVES THE RIGHT TO MAKE CHANGES AND IMPROVEMENTS TO PRODUCTS WITHOUT INCURRING ANY OBLIGATION TO INCORPORATE SUCH IMPROVEMENTS IN PRODUCTS PREVIOUSLY SOLD.

IF YOU, AS A USER, DO NOT ACCEPT LIABILITY, FLINT INSTRUMENT DESIGN, REQUESTS THAT YOU DO NOT USE A FLINT INSTRUMENT DESIGN MAGAZINE.

BY USING THIS FLINT INSTRUMENT DESIGN MAGAZINE YOU RELEASE FLINT INSTRUMENT DESIGN, OF ANY AND ALL LIABILITY ASSOCIATED WITH ITS USE.

- CARELESS USE OR MISUSE MAY RESULT IN SERIOUS BODILY INJURY OR DEATH!
- EYE PROTECTION DESIGNED FOR PAINTBALL MUST BE WORN BY THE USER AND ALL PERSONS WITHIN RANGE.
- MUST BE 18 YEARS OF AGE OR OLDER TO OPERATE OR HANDLE ANY PAINTBALL MARKER AND PAINTBALL MARKER ACCESSORIES WITHOUT ADULT OR PARENTAL SUPERVISION.
- READ AND UNDERSTAND ALL CAUTIONS, WARNINGS, AND OPERATING MANUALS BEFORE USING ANY PAINTBALL MARKER ACCESSORY.
- THIS MAGAZINE IS TO BE USED WITH PAINTBALLS AND FIRST STRIKE ROUNDS SHAPED PROJECTILES ONLY.
- TO PREVENT DAMAGE, AVOID PROLONGED EXPOSURE TO THE ELEMENTS.
- DO NOT LEAVE A LOADED MAGAZINE FOR PROLONGED PERIODS OF TIME. UNLOAD BEFORE STORAGE. STORE IN A SECURE INDOOR SPACE.
- DO NOT LEAVE THE MAGAZINE DOOR OPEN FOR PROLONGED PERIODS OF TIME.
- KEEP YOUR FINGER AWAY FROM THE FOLLOWER RELEASE WHILE LOADING, TO PREVENT ACCIDENTAL RELEASE.
- DO NOT LOOK DOWN AN EMPTY MAGAZINE OPENING BEFORE LOADING THE PAINTBALLS, IF THE SPRING IS LOADED
- USE COMMON SENSE AND HAVE FUN.
- ANY TAMPERING WITH THE UNIT VOIDS YOUR WARRANTY.

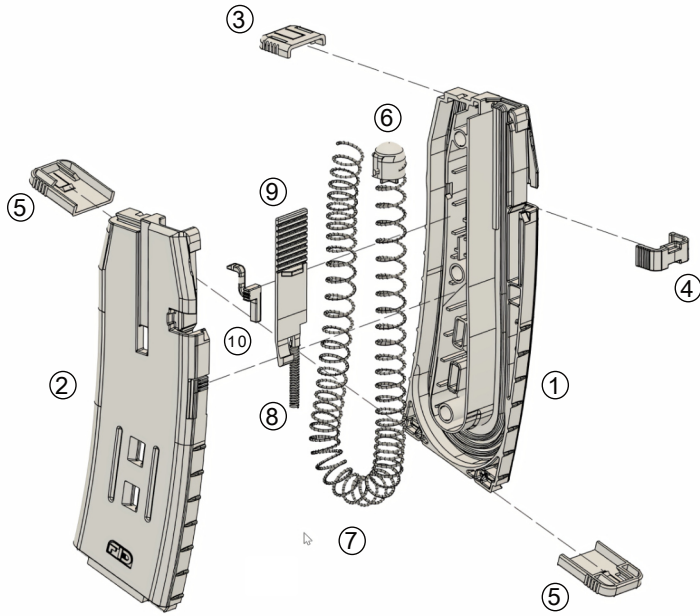
IN NO EVENT SHALL RETAILER BE LIABLE FOR ANY DIRECT, INCIDENTAL OR CONSEQUENTIAL DAMAGES OF ANY NATURE, OR LOSSES OR EXPENSES RESULTING FROM ANY DEFECTIVE PRODUCT OR THE USE OF ANY PRODUCT.

WARNING: THIS PRODUCT MAY BE MISTAKEN FOR A FIREARM ACCESSORY BY LAW ENFORCEMENT OFFICERS OR OTHERS.

ALTERING THE COLOR OF THE PRODUCT OR BRANDISHING THE PRODUCT IN PUBLIC MAY BE DANGEROUS AND MAY BE CONSIDERED A CRIME.



| EXPLODED VIEW |



- | | |
|----------------|---------------------------|
| 1. RIGHT SHELL | 6. FOLLOWER |
| 2. LEFT SHELL | 7. MAIN SPRING |
| 3. TOP CLIP | 8. DOOR/EJECTOR SPRING |
| 4. BACK CLIP | 9. DOOR |
| 5. BOTTOM CLIP | 10. FOLLOWER LOCK RELEASE |

| PREPARATION |

THANK YOU FOR PURCHASING THE FID CONTINUOUS MAGAZINE, WE HOPE YOU WILL ENJOY IT AS MUCH AS WE ENJOYED IT WHILE DEVELOPING IT. TO ENSURE PROPER USE, FULL FUNCTIONALITY AND YOUR COMPLETE AND TOTAL ENJOYMENT OF THIS MAGAZINE, PLEASE READ THIS GUIDE FROM START TO END.

NOTE: FRESH OUT OF THE BOX, TO ENSURE PART LONGEVITY, AND APPROPRIATE TOLERANCE MARGINS, THE LOCK RELEASE, AND THE DOOR COME OFF PRODUCTION SOMEWHAT STIFF, AND WILL REQUIRE ASSISTANCE ON THE RETURN MOTION. THEY WILL LOOSEN UP THROUGH USE, OR REPEATED MOTION. YOU CAN SPEED IT UP SOMEWHAT BY A DOZEN OR MORE UP AND DOWN CYCLES.

STEP 1.

UNPACK THE MAGAZINE, AND TEST THE LOCK RELEASE BUTTON MOTION (FIGURE 1.)

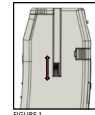


FIGURE 1

STEP 3.

TEST THE DOOR. (FIGURE 2) PRESS DOWN TO LOCK IT, AND PRESS THE RELEASE TAB IN THE BACK OF THE MAGAZINE TO RELEASE IT.

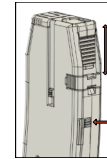


FIGURE 2

STEP 4.

OPEN AND LOCK THE DOOR. INSPECT THE FOLLOWER.

MAKE SURE IT ORIENTED AS PICTURED. (FIGURE 3) AND THE FOLLOWER WINGS ARE FITTED INTO THE CENTER GUIDE LANE ON BOTH SIDES OF THE MAGAZINE. SEE PAGE 8 FOR DISASSEMBLY IF THEY ARE NOT FITTED OR IT IS IMPROPERLY ORIENTED.

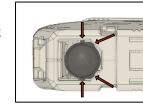


FIGURE 3

STEP 5.

IF YOU ARE USING THE MAGAZINE WITH THE DYE DAM, SKIP THIS STEP, PROCEED TO LOADING ON THE NEXT PAGE.

FOR MARKERS OTHER THAN DYE DAM, SWAP THE FOLLOWER WITH THE BOLT LOCKING FOLLOWER (SOLD SEPARATELY.) AND FLIP THE BACK CLIP, WITH THE NOTCH POINTING TOWARD THE TOP OF THE MAGAZINE, TO ENSURE TIGHTER FIT. (FIGURE 4)

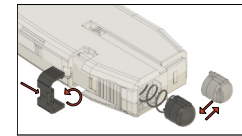


FIGURE 4



| LOADING |

USING THE FID MAGAZINE LOADING TOOL (SOLD SEPARATELY):

STEP 1.

OPEN AND LOCK THE DOOR. MAKE SURE THE LOCK RELEASE IS BACK IN THE UP POSITION.

STEP 2.

GUIDE THE FID MAGAZINE LOADING TOOL INTO THE MAGAZINE, PUSHING THE FOLLOWER IN. NOTE THAT THE FID MAGAZINE LOADING TOOL IS FLEXIBLE AND MAY BEND OUTSIDE OF THE MAGAZINE IF NOT BEING GUIDED IN.

INSERT THE FID MAGAZINE LOADING TOOL ALL THE WAY IN, UP TO THE COVERED HANDLE.

STEP 3.

REMOVE THE FID MAGAZINE LOADING TOOL FROM THE MAGAZINE. CAREFULL OF THE LOCK RELEASE, AND KEEP THE MAGAZINE POINTED IN A SAFE DIRECTION IN CASE OF ACCIDENTAL RELEASE.

STEP 4.

LOAD 22 ROUNDBALLS, OR 21 FIRST STRIKE ROUNDS SHAPED PROJECTILES, IN A CORRECT ORIENTATION. DO NOT POUR THEM IN.

STEP 5.

PRESS THE DOOR RELEASE TAB AND CLOSE THE DOOR.

MANUAL LOADING WITHOUT THE FID MAGAZINE LOADING TOOL:

STEP 1.

OPEN AND LOCK THE DOOR.

STEP 2.

INSERT 18 ROUNDBALLS OR FIRST STRIKE ROUNDS SHAPED PROJECTILES. YOU MAY USE THE DOOR TO HOLD THE LOADED ROUNDS, WHILE REACHING FOR THE NEXT ONE.

STEP 3.

WHEN REACHING 18 ROUNDS, USE YOUR INDEX FINGER TO PUSH THE STACK ALL THE WAY IN, AND LOCK THE FOLLOWER. YOU MAY NEED TO SLIDE THE LOCK RELEASE DOWN AND UP, TO ALLOW THE FOLLOWER FULLY IN, AND LOCK IT THERE.

STEP 4.

LOAD THE REMAINING 4/3 ROUNDS.

STEP 5.

PRESS THE DOOR RELEASE TAB AND CLOSE THE DOOR.

SAFE UNLOADING/RELEASE.

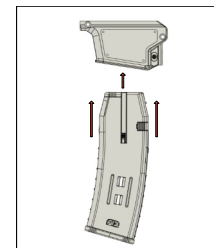
TO SAFELY UNLOAD A FULL MAGAZINE, POINT THE MAGAZINE INTO A BAG, AND SLIDE THE LOCK RELEASE DOWN.

WHEN UNLOADING AN EMPTY PRELOADED MAGAZINE, PUT PARTIALLY IN THE FID MAGAZINE LOADING TOOL, OR A SQUEEGEE, AND THEN SLIDE THE LOCK RELEASE DOWN. ALTERNATIVELY, CLOSE THE DOOR ON THE MAGAZINE, HOLD IT WITH YOUR PALM, AND THEN SLIDE THE LOCK RELEASE.

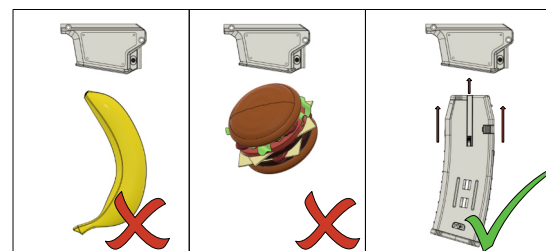
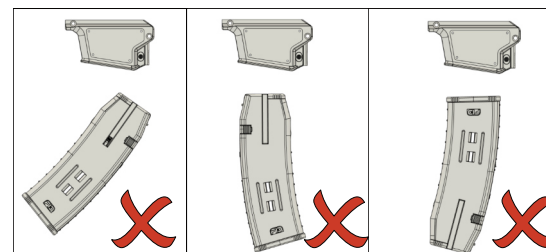
WARNING: FAILURE TO FOLLOW THE SAFE UNLOADING RELEASE PROCEDURE, CAN RESULT IN AN INJURY AND/OR DAMAGE TO PARTS THAT IS NOT COVERED UNDER WARRANTY.

| OPERATION |

INSERT THE MAGAZINE INTO THE MARKER, IN A QUICK STRAIGHT MOTION, UNTIL IT LOCKS THERE. GIVE IT A LIGHT TAP ON THE BOTTOM TO ENSURE IT FULLY LOCKED.



DO NOT INSERT THE MAGAZINE AT ANGLE, SLOWLY, OR IN ANY OTHER UNUSUAL FORM. DOING SO WILL CAUSE IT TO MISFEED, DAMAGE THE PAINT, AND OTHER GRIEF.



BE AWARE THE MAGAZINE HAS AN EJECTION ASSIST. PRESSING THE RELEASE BUTTON OR PADDLE ON THE MARKER WILL CAUSE IT TO EJECT WITH SOME FORCE.



| DISASSEMBLY |

THE FID CONTINUOUS MAGAZINE CAN BE QUICKLY DISSASSEMBLED WITHOUT ANY TOOLS. FOLLOW THE GUIDE, OR ALTERNATIVELY HEAD TO YOUTUBE AND WATCH THE DISSASSEMBLY THERE.

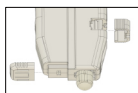
FOLLOW THE STEPS IN THE ORDER BELOW, FAILURE TO FOLLOW IT WILL MAKE IT HARDER THAN NECESSARY.

STEP 1.

REMOVE THE TOP CLIP.

STEP 2.

USING THE CORNER OF THE TOP CLIP, UNHOOK THE BACK CLIP, AND REMOVE IT

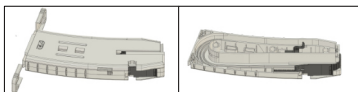


STEP 3.

OPEN THE MAGAZINE SLIGHTLY, PULL OUT THE FOLLOWER AND THE MAIN SPRING.

STEP 4.

REMOVE THE BOTTOM CLIPS



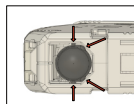
STEP 5.

REMOVE THE LOCK RELEASE, DOOR AND DOOR/EJECTOR SPRING.

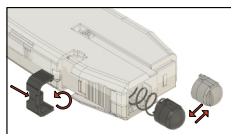
CLEAN WITH WARM WATER AND A SOFT NON ABRASIVE CLOTH. DRY THOROUGHLY.

TO REASSEMBLE FOLLOW THE STEPS ABOVE IN A REVERSE ORDER.

- MAKE SURE TO PLACE THE DOOR/EJECTOR SPRING CORRECTLY IN ITS CAVITY
- WHEN REINSTALLING THE FOLLOWER MAKE SURE IT IS PROPERLY ALIGNED.



- FOR MARKERS OTHER THAN DYE DAM, SWAP THE FOLLOWER WITH THE BOLT LOCKING FOLLOWER (PROVIDED SEPARATELY.) AND FLIP THE BACK CLIP, WITH THE NOTCH POINTING TOWARD THE TOP OF THE MAGAZINE, TO ENSURE TIGHTER FIT.

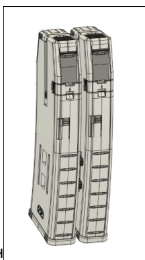


- WHEN COUPLING THE MAGAZINES USING THE DYE DAM COUPLERS, DO NOT OVERTIGHTEN THE SCREWS. DOING SO, WILL DEFORM THE MAGAZINE AND WILL CAUSE JAMS.
- TO ENSURE PROPER FIT AND TIGHTNESS, USE A NON PERMANENT THREAD LOCKER ON THE SCREWS, AND FOLLOW THE STEPS BELOW.

STEP 1: PUT SOME THREAD LOCKER ON THE 4 SCREWS.

STEP 2: ATTACH THE MAGAZINES TO THE COUPLERS. TIGHTEN, SO NEITHER IS LOOSE.

STEP 3: ON ONE SIDE START LOSENING THE SCREWS UNTIL THE MAG FEELS SLIGHTLY LOOSE. TIGHTEN BACK WITH JUST A QUARTER TURN. REPEAT ON THE OTHER SIDE. SET THE COUPLED MAGS ASIDE TO SET OVERNIGHT.



| TROUBLESHOOTING |

THE MAGAZINE JAMMED - PAINT IS NOT COMING OUT:

- IMPROPERLY ORIENTED FOLLOWER:

DISSASSEMBLE THE MAGAZINE, EMPTY IT, REASSEMBLE PER PAGE 8 OF THIS GUIDE.

- COUPLED MAGAZINE:

FOLLOW THE PROPER TIGHTENING STEPS ON PAGE 8.

THE FOLLOWER DOESNT LOCK IN PLACE:

- ENSURE THE FOLLOWER IS PROPERLY ORIENTED

- ENSURE THE LOCK RELEASE IS IN THE CLOSE (UP) POSITION

PRELOAD THE MAGAZINE, IF IT STILL DOESNT LOCK, PUSH AND HOLD DOWN THE LOCK RELEASE AND PUSH THE LOADING TOOL IN. RELEASE THE LOCK RELEASE, AND PULL THE LOADING TOOL OUT.

DOOR DOES NOT CLOSE ON ITS OWN, WHEN THE RELEASE TAB PRESSED:

- REPEATED MOTION, UP AND DOWN WILL LOOSEN IT UP.

USING A SET OF FLAT JAWED PLIERS YOU CAN BEND BACK AND FORTH EACH SECTION OF THE FRONT FLEXIBLE SECTION, TO SOFTEN IT UP.

LOCK RELEASE STAYS IN OPEN POSITION, DOES NOT CLOSE AUTOMATICALLY:

- REPEATED MOTION, UP AND DOWN WILL LOOSEN IT UP.

THE FOLLOWER DOESNT BLOCK THE BOLT.

- THE BOLT BLOCKING FOLLOWER IS PURCHASED SEPARATELY.

FIRST STRIKE ROUNDS SHAPED PROJECTILES FLIPPING OR JAMMING IN THE BREACH, REQUIRING RELOADING OR SLAPPING

ON THE DYE DAM:

- PULL OUT THE BOLT ASSEMBLY, MAKE SURE THE BOLT PARTS, (TIP, CAN, ETC.) ARE FULLY TIGHTENED. LOOSE PARTS NOT ONLY CAUSE LEAKS AND OTHER ISSUES, BUT ALSO CHANGE THE LENGTH OF THE BOLT, CAUSING THE FIRST STRIKE ROUNDS SHAPED PROJECTILES TO CATCH ON IT.

- IF YOU DO NOT HAVE IT, THE DYE GBR BOLT KIT IS A HIGHLY RECOMMENDED KIT, THAT MAKES UP FOR THE DISCREPANCY IN FIRST STRIKE ROUNDS SHAPED PROJECTILES SIZES. IF YOU HAD FLIPS WITH STANDARD DYE MAGAZINES, ITS A MUST HAVE TO PREVENT FLIPS WITH THE FID MAGAZINES TOO.

ON OTHER MARKERS:

- ENSURE THE BACK CLIP IS IN THE FLIPPED POSITION (NOTCH POINTING UP)

- MAKE SURE YOU ARE PUTTING THE MAGAZINES IN, IN A QUICK STRAIGHT MOTION. SEE PAGE 7.



| WARRANTY |

FID WARRANTS TO THE ORIGINAL PURCHASER THAT IT WILL MAKE ANY REPAIRS OR REPLACEMENTS NECESSARY TO CORRECT DEFECTS IN MATERIAL OR WORKMANSHIP, AT NO CHARGE TO YOU, FOR THE MARKER FOR A PERIOD OF SIXTY (60) DAYS FROM THE DATE OF ORIGINAL RETAIL SALE. FURTHER, FID WARRANTS TO THE ORIGINAL PURCHASER THAT IT WILL MAKE ANY REPAIRS OR REPLACEMENTS NECESSARY TO CORRECT DEFECTS IN MATERIAL OR WORKMANSHIP, AT NO CHARGE TO YOU, FOR FID MAGAZINES FOR A PERIOD OF THIRTY(30) DAYS FROM THE DATE OF ORIGINAL RETAIL SALE. ALL FID ASKS IS THAT YOU PROPERLY MAINTAIN AND CARE FOR THE MAGAZINE AND ACCESSORIES (COLLECTIVELY, THE "PRODUCT") AND THAT YOU HAVE WARRANTY REPAIRS PERFORMED BY FID OR A FID CERTIFIED TECH. THIS LIMITED WARRANTY IS NON-TRANSFERABLE, AND IT DOES NOT COVER DAMAGE OR DEFECTS TO THE PRODUCT CAUSED BY (A) IMPROPER MAINTENANCE; (B) ALTERATION OR MODIFICATION; (C) UNAUTHORIZED REPAIR; (D) ACCIDENT; (E) ABUSE OR MISUSE; (F) NEGLIGENCE OR NEGLIGENCE; AND/OR (G) NORMAL WEAR AND TEAR. THIS WARRANTY DOES NOT COVER PERFORMANCE. FID DOES NOT AUTHORIZE ANY PERSON OR REPRESENTATIVE TO ASSUME OR GRANT ANY OTHER WARRANTY OBLIGATION WITH THE SALE OF THIS PRODUCT. THIS IS THE ONLY EXPRESS WARRANTY GIVEN WITH THE PURCHASE OF THIS PRODUCT; ANY AND ALL OTHER EXPRESS WARRANTIES ARE DISCLAIMED. THE IMPLIED WARRANTIES OF MERCHANTABILITY AND FITNESS FOR A PARTICULAR PURPOSE ARE LIMITED TO THE APPLICABLE LIMITED WARRANTY PERIOD SET FORTH HEREIN, AND NO WARRANTIES, WHETHER EXPRESS OR IMPLIED, SHALL APPLY AFTER EXPIRATION OF SUCH PERIOD. SOME STATES AND NATIONS DO NOT ALLOW LIMITATIONS ON THE DURATION OF IMPLIED WARRANTIES, SO THE ABOVE LIMITATION MAY NOT APPLY TO YOU. THE SOLE AND EXCLUSIVE LIABILITY OF FID AND/OR ITS AUTHORIZED DEALERS UNDER THIS LIMITED WARRANTY SHALL BE FOR THE REPAIR OR REPLACEMENT OF ANY PART OR ASSEMBLY DETERMINED TO BE DEFECTIVE IN MATERIAL OR WORKMANSHIP. FID SHALL NOT BE LIABLE FOR, AND YOU EXPRESSLY DISCLAIM, ANY DIRECT, INDIRECT, CONSEQUENTIAL OR INCIDENTAL DAMAGES (COLLECTIVELY, "DAMAGES") ARISING OUT OF THE SALE OR USE OF, OR YOUR INABILITY TO USE, THE PRODUCT. NO PAYMENT OR OTHER COMPENSATION WILL BE MADE FOR DAMAGES, INCLUDING INJURY TO PERSON OR PROPERTY OR LOSS OF REVENUE WHICH MIGHT BE PAID, INCURRED OR SUSTAINED BY REASON OF THE FAILURE OF ANY PART OR ASSEMBLY OF THE PRODUCT. SOME STATES AND NATIONS DO NOT ALLOW THE EXCLUSION OR LIMITATION OF INCIDENTAL OR CONSEQUENTIAL DAMAGES, SO THE ABOVE LIMITATION OR EXCLUSION MAY NOT APPLY TO YOU. THIS WARRANTY GIVES YOU SPECIFIC LEGAL RIGHTS, AND YOU MAY ALSO HAVE OTHER RIGHTS THAT MAY VARY FROM STATE TO STATE OR NATION TO NATION.

| WARRANTY |

WARRANTY AND NON-WARRANTY REPAIRS

WHEN SHIPPING THE PRODUCT TO FID FOR WARRANTY OR NON-WARRANTY REPAIR:

1. IF YOU HAVE AFTERMARKET PARTS ON YOUR MAGAZINE PLEASE TEST THE MAGAZINE WITH ORIGINAL STOCK PARTS BEFORE RETURNING THE MAGAZINE FOR SERVICE OR REPAIR.
2. ALWAYS UNLOAD THE MAGAZINE, RELEASE THE DOOR, AND LOCK RELEASE. DO NOT SHIP THE MAGAZINE IF IT IS NOT COMPLETELY EMPTY.
3. SHIP THE PRODUCT TO THE FID ADDRESS IDENTIFIED.
4. YOU MUST PRE-PAY POSTAGE AND DELIVERY CHARGES.
5. PROVIDE THE PROOF OF PURCHASE FOR THE PRODUCT.
6. BRIEFLY DESCRIBE THE REPAIR REQUESTED.
7. INCLUDE YOUR NAME, RETURN ADDRESS AND A TELEPHONE NUMBER WHERE YOU CAN BE REACHED DURING NORMAL BUSINESS HOURS, IF POSSIBLE. FID MAKES EVERY EFFORT TO COMPLETE ITS REPAIR WORK WITHIN A REASONABLE AMOUNT OF TIME OF RECEIPT. FID WILL RETURN THE PRODUCT TO YOU VIA REGULAR MAIL SERVICE. IF YOU WISH TO HAVE IT RETURNED USING A FASTER SERVICE, YOU CAN REQUEST IT, BUT YOU WILL BE CHARGED FOR THIS SERVICE AND MUST INCLUDE YOUR CREDIT CARD NUMBER WITH THE EXPIRATION DATE. YOUR CREDIT CARD WILL BE CHARGED THE DIFFERENCE IN ADDITIONAL COST OVER REGULAR SHIPPING.

| NOTES |