

~J04248

2006-11-14

SEAT AND PASSENGER FOOTPEG KIT

GENERAL

Kit Number

N2000.1ASYBP

Models

For the most up-to-date model fitment information, please see product label or www.buell.com (English only).

⚠ WARNING

The rider's safety depends upon the correct installation of this kit. If the procedure is not within your capabilities or you do not have the correct tools, have a Buell dealer perform the installation. Improper installation of this kit could result in death or serious injury. (00309a)

Kit Contents

See Figure 7 and Table 1.

REMOVAL

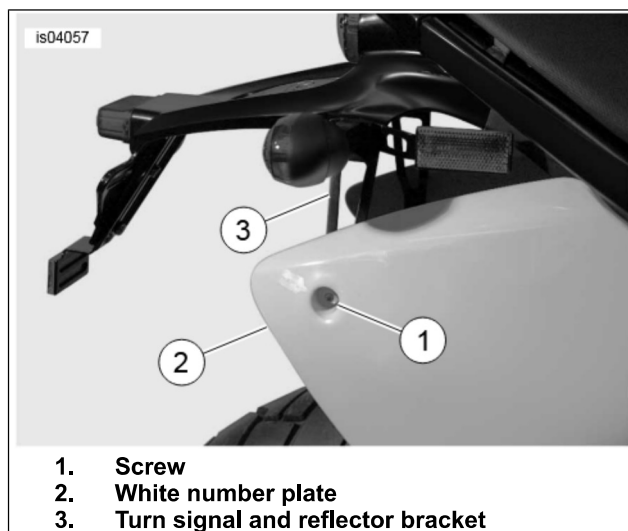
1. See Figure 1. Insert ignition key into seat lock and make 1/4 turn clockwise.
2. See Figure 2. Grip the rear of seat and press firmly in the center of seat in a back and up motion.
3. See Figure 3. Remove and discard screw (1) that fastens white number plate (2) to turn signal and reflector bracket (3).



Figure 1. Seat Lock Location



Figure 2. Solo Seat and White Number Plate



1. Screw
2. White number plate
3. Turn signal and reflector bracket

Figure 3. Turn Signal and Reflector Bracket Screw

4. See Figure 4. Loosen nut (1) on back of turn signal and reflector bracket (2) enough to slide the bracket downward and off the turn signal stem (3) and tail section. Discard bracket but leave turn signal assembly on motorcycle.
5. See Figure 5. Remove and discard two screws (1) and spacers (2) that fasten white number plate to tail section.
6. Remove white number plate (3) from tail section.

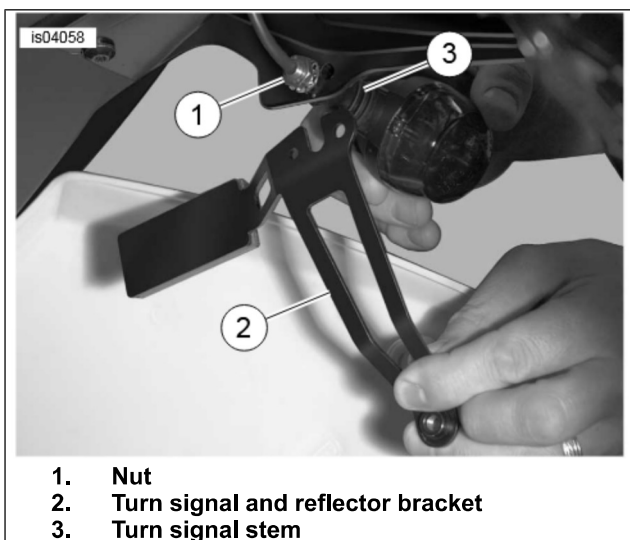


Figure 4. Turn Signal and Reflector Bracket

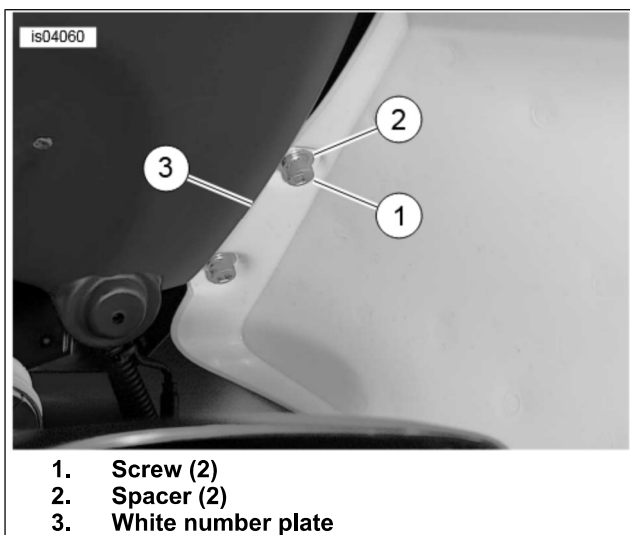


Figure 5. White Number Plate

7. Repeat Steps 3 through 6 for opposite side.

INSTALLATION

1. See Figure 7. Install turn signal and reflector bracket (1) from kit on turn signal assembly (A) and tail section (B). Tighten nut with washer (D) on inboard side snugly.
2. Peel adhesive strip from back of red reflector (2) and apply to turn signal and reflector bracket.

3. Install passenger footpeg support assembly (preassembled) (3) to underside of tail section (B) with two screws (4).
4. Tighten screws (4) to 25-28 ft-lbs (33.9-38.0 Nm).
5. Repeat Steps 1 through 4 for opposite side.
6. See Figure 6. Engage the front tab (1) into the slot in the frame.
7. See Figure 7. Position two-person seat (5) on right and left tail sections (B, C).
8. See Figure 6. Check that all seat hooks (2) engage the tail section.

▲ WARNING

After installing seat, pull upward on seat to be sure it is locked in position. While riding, a loose seat can shift causing loss of control, which could result in death or serious injury. (00070b)

9. Press down rapidly on rear of seat to engage seat latch (3). Pull up on rear of seat to make sure latch is engaged.

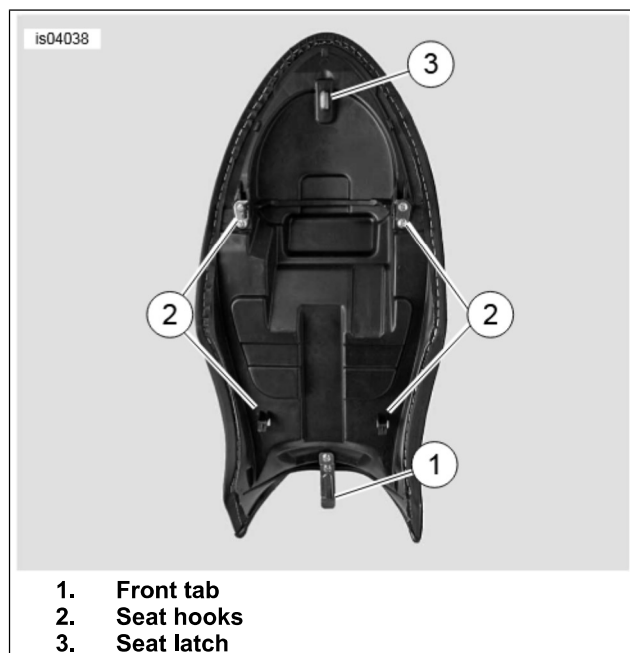


Figure 6. Seat Hooks

SERVICE PARTS

is04049

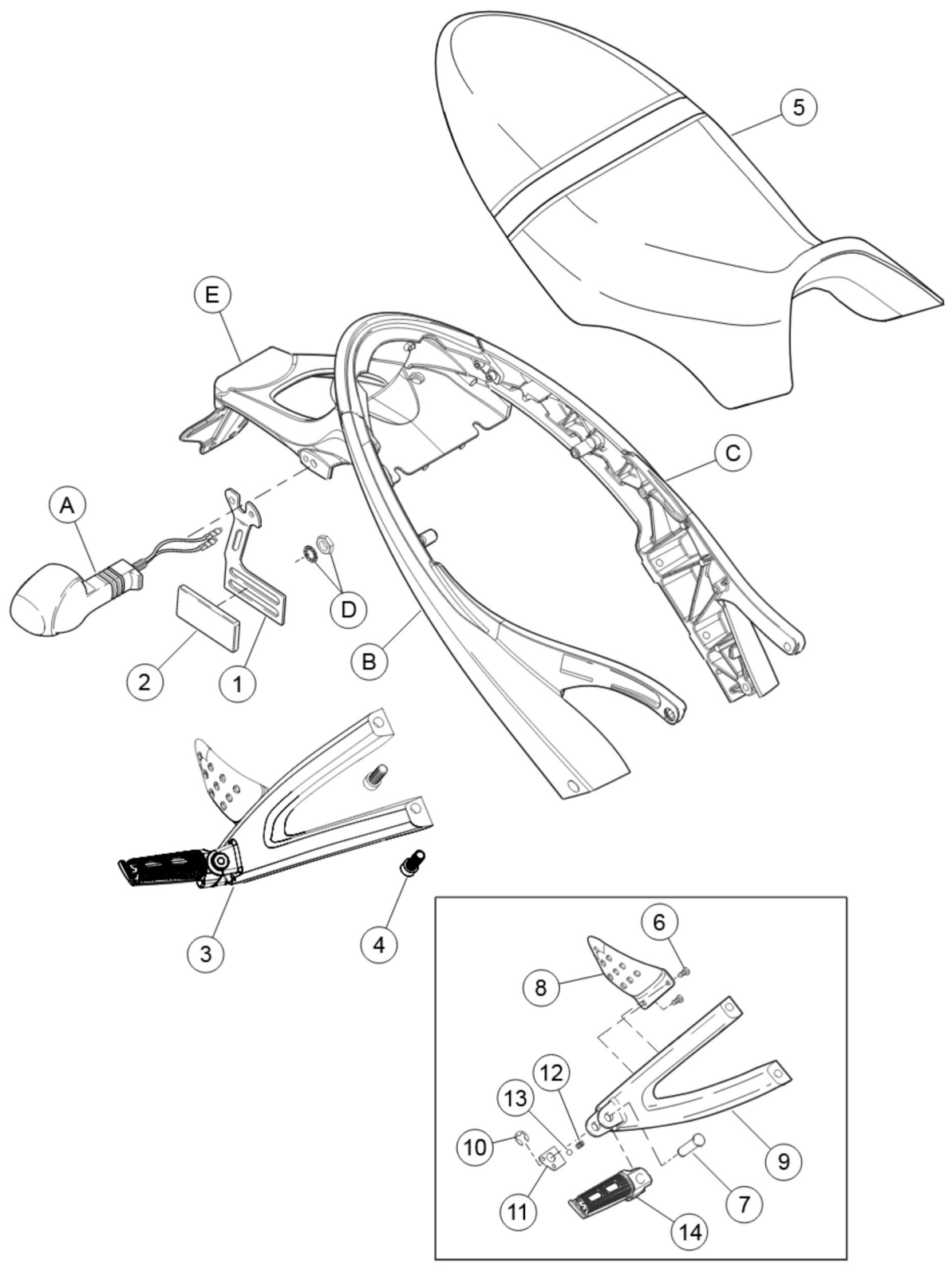


Figure 7. Service Parts: Seat and Passenger Footpeg Kit

Table 1. Service Parts: Seat and Passenger Footpeg Kit

Item	Description (Quantity)	Part Number
1	Bracket, turn signal and reflector, right side	M0233.4A8YT
	Bracket, turn signal and reflector, left side	M0232.4A8YT
2	Reflector, red (2)	59259-90
3	Footpeg support assembly, passenger, right side (includes Items 6 through 14)	Not Sold Separately

Table 1. Service Parts: Seat and Passenger Footpeg Kit

Item	Description (Quantity)	Part Number
	Footpeg support assembly, passenger, left side (includes Items 6 through 14)	Not Sold Separately
4	Screw, socket head cap 3/8-16 x 1 in. (4)	AA0608.2CXZB
5	Seat, full, standard black	N0025.1ANFYW
Passenger footpeg support assembly replacement parts:		
6	Screw, thread cutting #10-32 x 1/2 in. (4)	AN1004.21FRZB
7	Pin, footpeg (2)	C0235.02A8
8	Heel guard, passenger, right side	L0079.02A8
	Heel guard, passenger, left side	L0078.02A8
9	Footpeg support, passenger, right side	N0055.2ADYBP
	Footpeg support, passenger, left side	N0054.2ADYBP
10	Clip, footpeg (2)	N0425.02A8
11	Detent plate, footpeg (2)	N0427.02A8A
12	Spring coil, footpeg (2)	N0428.02A8
13	Ball, footpeg (2)	N0429.02A8
14	Footpeg, passenger, right side	N0553.02A8
	Footpeg, passenger, left side	N0552.02A8
Items mentioned in text, but not included in kit:		
A	Turn signal assembly, right side	
B	Tail section, right side	
C	Tail section, left side	
D	Nut and washer	
E	Tail section, center	