

-J04340

2009-06-02

BUELL WIND DEFLECTOR KIT

GENERAL

Kit Number

N1007.1ADMBE, N1007.1ADMBP

Models

For model fitment information, see the Buell Accessories and Parts Countertop Reference Guide (CRG) or the Accessories section of www.buell.com (English only).

Kit Contents

See Figure 1 and Table 1.

INSTALLATION

1. Remove the brake lever pivot and fasteners .
2. See Figure 1. Insert the brake lever pivot shaft (4) through the pivot holes in the brake master cylinder housing and brake lever .
3. Install the jam nut (6) onto the pivot shaft threads, and tighten to 4.4–5.4 N·m (39–48 **in-lbs**).
4. Install the pivot shaft riser (7), and tighten to 4.8–5.5 N·m (43–49 **in-lbs**).

5. Remove the clutch lever pivot and fasteners .
6. Insert the clutch lever pivot shaft (5) through the pivot holes in the clutch lever bracket and clutch lever .
7. Install the jam nut (6) onto the pivot shaft threads, and tighten to 4.4–5.4 N·m (39–48 **in-lbs**).
8. Install the pivot shaft riser (7), and tighten to 4.8–5.5 N·m (43–49 **in-lbs**).
9. Remove the original handlebar end caps. Press the **new** handlebar end caps (3) into the ends of the handlebar.
10. Spread the inboard ears of the left-side wind deflector (2) and place them over the ends of the clutch lever pivot shaft and riser. Snap the slot at the outboard end into the groove in the end cap.
11. Fasten the wind deflector to the pivot shaft and riser with two screws (8). Tighten the screws to 2.7–4.1 N·m (24–36 **in-lbs**).
12. Repeat steps 10 and 11 for the right-side deflector (1).

SERVICE PARTS

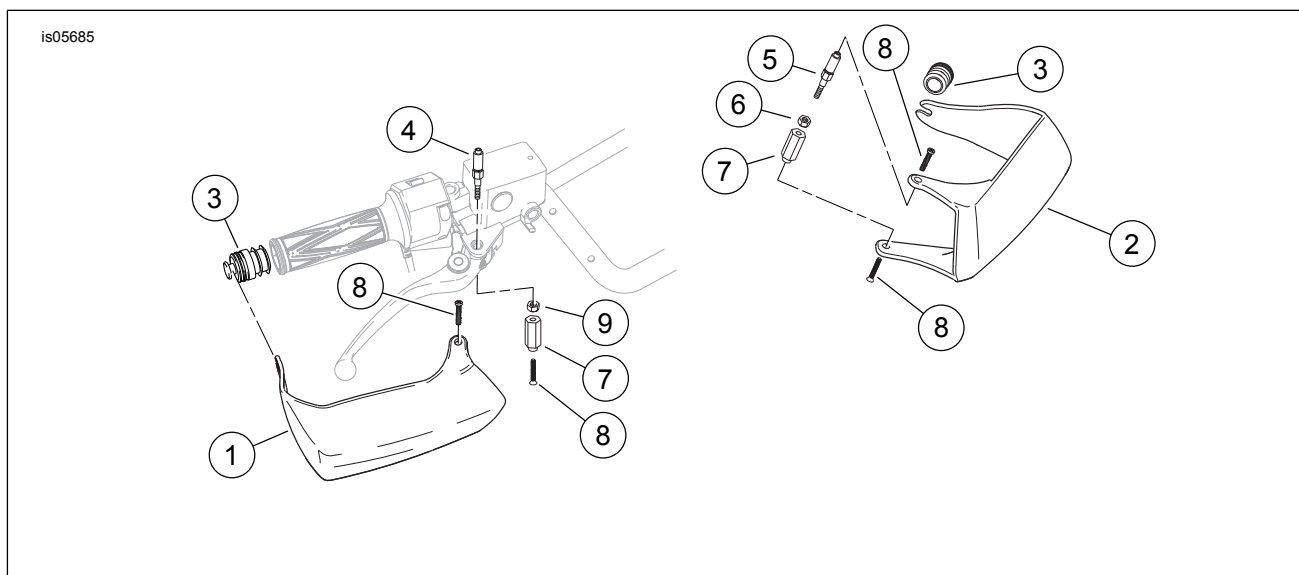


Figure 1. Service Parts, Buell Wind Deflector Kit

Table 1. Service Parts

Kit	Item	Description (Quantity)	Part Number
Kit N1007.1ADMBE Wind Deflector, Body Black	1	Deflector, wind (right, black)	N0017.1AJMBE
	2	Deflector, wind (left, black)	N0007.1AJMBE



Table 1. Service Parts

Kit	Item	Description (Quantity)	Part Number
Kit N1007.1ADMBP Wind Deflector, Graphite Gray	1	Deflector, wind (right, gray)	N0017.1AJMBP
	2	Deflector, wind (left, gray)	N0007.1AJMBP
Parts common to ALL kits	3	End cap, handlebar (2)	N0053.1AJ
	4	Pivot shaft, brake lever	C0064.1AJ
	5	Pivot shaft, clutch lever	C0065.1AJ
	6	Hex jam nut, clutch lever	CD0001.T
	7	Riser, pivot shaft (2)	C0066.1AJ
	8	Screw, Phillips head, M5-0.8 x 16 mm, with lock patch (4)	A05016.8CXVB
	9	Hex jam nut, brake lever	CD0013.9