

GENERAL

For clutch adjustment, see [1.9 CLUTCH](#).

For clutch replacement, see [6.4 CLUTCH](#).

REMOVAL/DISASSEMBLY

Clutch Cable

⚠ WARNING

To avoid accidental start-up of vehicle and possible personal injury, disconnect negative battery cable before proceeding. Inadequate safety precautions could result in death or serious injury.

1. Remove seat. See [2.38 SEAT](#).
2. Disconnect negative battery cable. See [1.5 BATTERY MAINTENANCE](#).
3. Remove chin fairing. See [2.33 CHIN FAIRING](#).

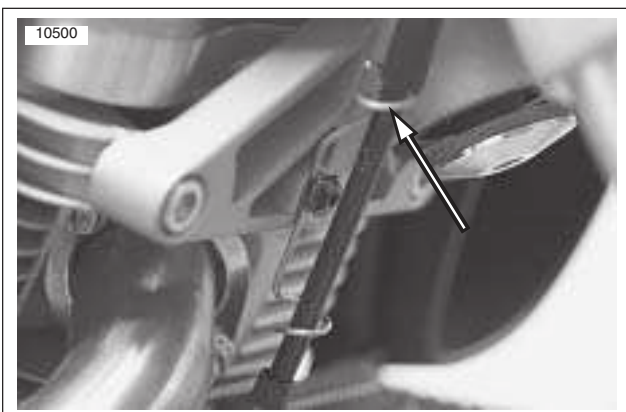


Figure 2-94. Clutch Cable Wire Form

4. See [Figure 2-94](#). Remove wire form from front isolator.

CAUTION

Always disconnect front tie bar from the "V" bracket first.

5. Remove front tie bar from "V" bracket only.
6. Remove front tie bar, P clamp and clutch cable from engine.
7. Remove cable strap securing clutch cable to voltage regulator wire.

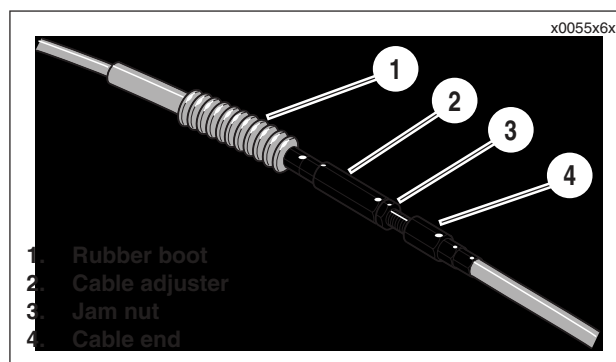


Figure 2-95. Clutch Cable Adjuster Mechanism

8. See [Figure 2-95](#). Slide clutch cable adjuster boot (1) up to access clutch adjuster (2).
9. Loosen clutch adjuster (2) to release tension from hand lever and clutch release mechanism.
10. See [Figure 2-96](#). Remove clutch cable ferrule (7) from hand lever (4).

NOTE

See [D.1 HOSE AND WIRE ROUTING](#) in Appendix D.

11. Pull clutch cable down and out of upper triple clamp.
12. Remove three TORX screws with washers securing clutch inspection cover.
13. See [Figure 2-97](#). Remove clutch inspection cover (2).

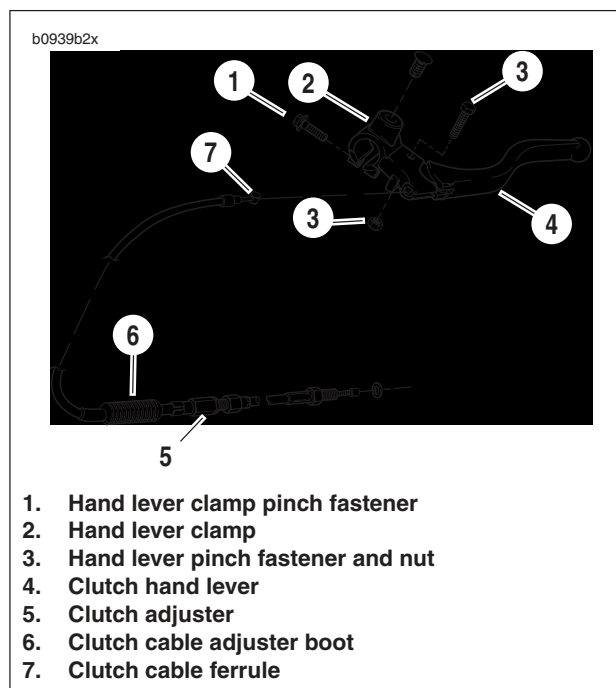


Figure 2-96. Clutch Hand Control Assembly

b1169x2x

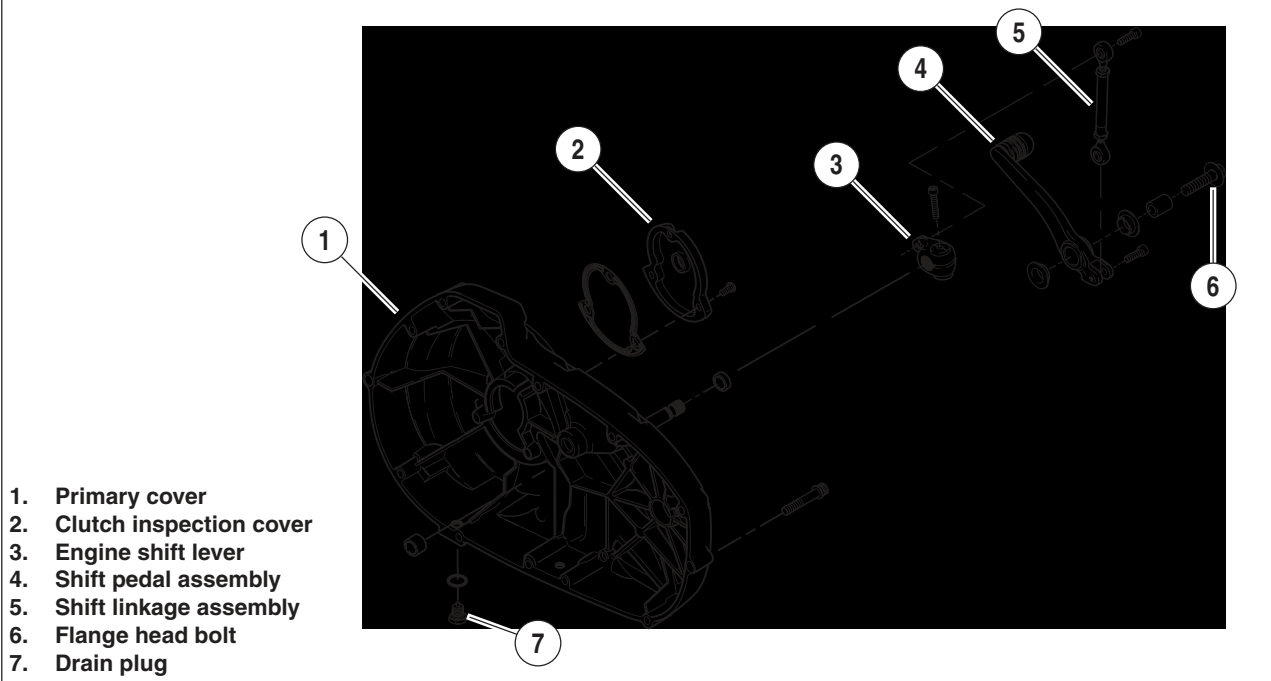


Figure 2-97. Primary Cover and Shifter Assembly

14. Remove complete shift assembly.
 - a. Remove flange bolt (6) from primary cover.
 - b. Remove engine shift lever assembly (3). Do not scratch primary cover.

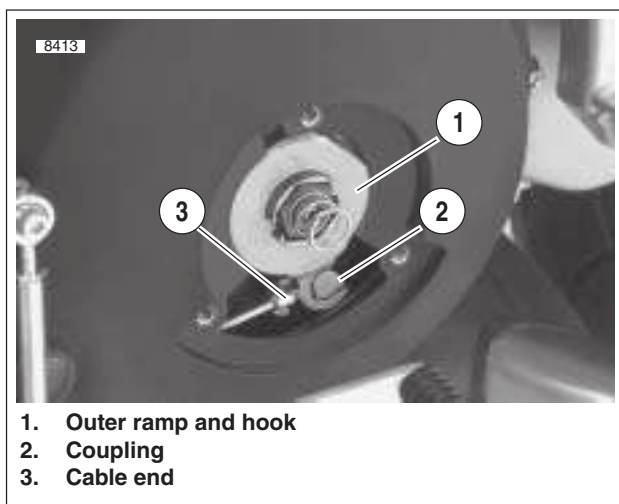


Figure 2-98. Clutch Release Mechanism

15. See [Figure 2-98](#). Remove the outer ramp and hook (1) from the cable end (3) and coupling (2). Remove cable end from slot in coupling. See [6.3 CLUTCH RELEASE MECHANISM](#).

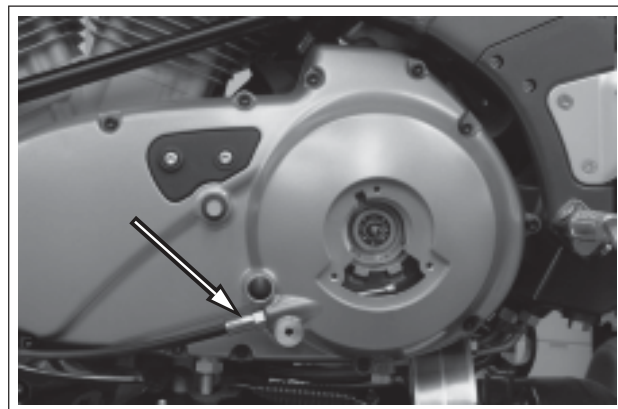


Figure 2-99. Clutch Cable and Fitting

16. See [Figure 2-99](#). Unscrew the cable fitting from the primary cover. Remove clutch cable and fitting.
17. Remove and discard oring on the clutch cable fitting.

ASSEMBLY/INSTALLATION

Clutch Cable

1. Install **new** oring on the clutch cable fitting before installing.
2. Apply 565 thread sealer to fitting on clutch cable and screw the clutch cable fitting into the primary cover and tighten to 75-100 in-lbs (8.5-11.3 Nm).
3. See [Figure 2-98](#). Install cable end into slot in coupling. Install the outer ramp and hook (1) onto the cable end (3) and coupling (2) and place assembly back into the clutch inspection area in the primary cover. See [6.3 CLUTCH RELEASE MECHANISM](#).
4. See [Figure 2-100](#). Install rubber washer and engine shift lever assembly (1).
5. After applying LOCTITE 272, install flange bolt (5) and shift pedal to primary cover, and tighten to 22-24 ft-lbs (30-32.5Nm).
6. After applying LOCTITE 272 (red), tighten engine shift lever pinch screw to 48-60 **in-lbs** (5.4-6.8 Nm).

NOTE

See [D.1 HOSE AND WIRE ROUTING](#) in Appendix D.

7. Route clutch cable through upper triple clamp.

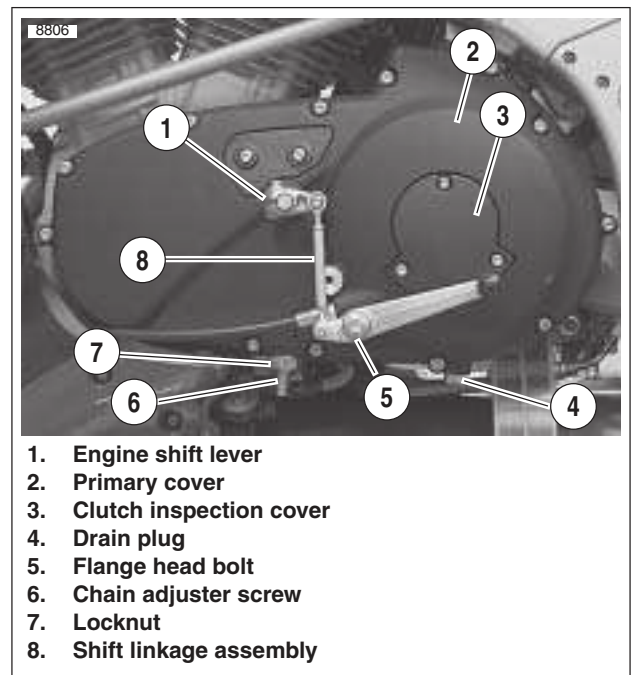


Figure 2-100. Installing Shift Linkage