



WE OFFER A CONCEPT, NOT JUST A PRODUCT
Manufacturers of Elegant Hardwood Mouldings & Woodcarvings

TERMS | Credit must be established through our credit department first. **Hard copy P.O. must be faxed. Phone orders not accepted!**

IN-STOCK PRODUCTS | Our complete line of hardwood mouldings is in-stock in Poplar for prompt shipment. Red Oak mouldings are in-stock in selected profiles and are noted per profile. Our Authentic Hand-Carved® woodcarvings and Mantels are in-stock in Lindenwood, and our Adornments™ are in-stock in American Maple and Cherry. Resins show pricing if molds have been made. Unpriced resins indicate that an original mold has not yet been created, and customer will be subject to the mold charge. LCD's are priced as units, but identified and shipped as individual mouldings in random long lengths.

SPECIFIED LENGTHS | There is an upcharge for specified lengths. The customer also pays for additional footage needed to pull specified-length orders. See specifications under each moulding category. Please see expanded version of specified-lengths policy on page PL17.

RETURNS | Stock mouldings cannot be returned without prior approval. Call for an RGA number and clearly mark the outside of package(s) with that number. Mouldings will not be credited that are (1) marked on, (2) modified in any way, (3) exposed to excessive sun or moisture, (4) have sheetrock mud, primer, stain or job-site damage. For stock mouldings to receive credit, mouldings must be in resalable condition. Returns are F.O.B. buyer and are subject to a 20% restocking charge. Loose mouldings will be accepted only if they are 8' or longer, unless in original plastic covering. No returns allowed after 60 days from date of invoice. After 60 days, if the return is allowed at White River's discretion, the restocking charge will increase by 10% per month. White River has the right to refuse any return. All carvings must be in original packaging or still carded with seal unbroken. White River ABSOLUTELY will not accept carded carvings that have been opened. See return policy on the back of this price list.

FREIGHT CHARGES | All items shown are stock items, shipped F.O.B. from our manufacturing and warehouse facilities in Fayetteville, Arkansas. Our minimum LTL charge is \$110 and the minimum FedEx charge is \$15. There is no minimum order. Remember to take into consideration minimum freight and specified-length charges, especially for small FedEx orders. For Residential LTL Deliveries, there is an additional **\$86 freight charge, \$45 call charge** and a **lift gate charge** based on the weight of the order. White River must receive a **signed authorization** for Residential and Lift Gate Estimated Charges. White River will estimate freight charges as accurately as possible, but customers are responsible for final freight charges. Orders may be shipped via FedEx Ground if lengths are 8' or shorter. An additional **\$10 charge will apply to FedEx Residential Deliveries.**

FREIGHT RESIN ORDERS | All resin orders will have freight charges added to the invoice. Resin Orders ship directly to the customer and do not ship with other orders coming from Fayetteville. Resin Orders ship UPS Ground.

WARRANTY | White River's hardwood mouldings are manufactured from clear, kiln-dried, hardwood lumber. All lumber is NHLA graded and dried to 6-8% moisture content. Our hardwood mouldings are produced from lumber that is 65% 12'-16' lengths, allowing us to produce stock mouldings in long lengths (overall 3'-16'). Our hardwood mouldings are precision machined with Weinig Moulders using Weinig Knife Tooling.

CUSTOM MOULDINGS | Custom mouldings involve modification of stock moulding, other wood species, restoration millwork and tooling for new patterns. All tooling is done on-site. Custom mouldings require a deposit and are non-returnable. Please state lineal footage per profile, species, and random or specified lengths. Specified lengths are considerably higher and take longer. We also manufacture radius casing, crowns, and other profiles from our various collections. Please see page PL16 for more information.

CUSTOM DESIGN SERVICES | Please call us with any design questions, and we will be glad to help you. Our staff can help you detail your entire job. Please see page PL16 for more information.

Expanded company policy statement on back page. **All prices are National List Prices per foot in US Dollars. For actual pricing, contact your Authorized White River Distributor or Dealer. Prices subject to change.**

Pricing errors or omissions on this list are superseded by actual manufacturer's prices.

OFFICE

Telephone 800-558-0119
479-442-6986

Website www.whiteriver.com
Email Info@whiteriver.com

24-hour Fax 479-444-0406

1197 Happy Hollow Rd · Fayetteville, Arkansas 72701

Distributor/Dealer Fax 479-444-0406

MANUFACTURED FROM DOMESTIC HARDWOODS

©White River Hardwoods-Woodworks, Inc. 1989-2018

APLNAT

PL1

PRICE LIST

WOODCARVINGS · MAPLE AND CHERRY

MOULDINGS · ROPES · PEDIMENTS
 * In-Stock Maple & Cherry
 * Mldgs priced per LF, Pediments/per ea.
 * Denote Resin when ordering (MLD5840 Resin).
 * Resin min. 5' order, max. 8', whole feet only.
 * Mldgs are mfg from 8' lengths / priced per LF.
 LF. Any single item ordered over 64' may contain 8' sections in 2 pcs (4' + 4', 3' + 5'). 7'9" net charged as 8'. Requesting all 8' pcs is subject to a 10% upcharge.

MOULDINGS

PRODUCT	MA	CH	RESIN
MLD5616	6.47	6.74	9.14
MLD5667	30.34	32.67	48.75
MLD5669	17.63	19.42	26.40
MLD5808	30.34	35.96	60.79
MLD5809	17.42	21.91	37.00
MLD5810	7.03	8.99	13.97
MLD5812	7.30	7.87	10.30
MLD5814	4.78	6.74	6.94
MLD5818	30.34	35.96	61.47
MLD5819	17.42	21.91	38.34
MLD5820	7.03	8.99	14.77
MLD5822	7.30	7.87	8.80
MLD5824	4.78	6.74	6.02
MLD5825	11.80	15.73	36.52
MLD5827	10.40	14.33	30.03
MLD5829	7.30	10.11	21.94
MLD5830R	9.28	13.48	28.89
MLD5830T	9.55	14.33	28.89
MLD5832R	7.30	10.11	20.41
MLD5832T	7.30	10.11	20.41
MLD5839	44.23	52.17	32.69
MLD5840	41.97	48.77	31.25
MLD5842	32.32	39.13	27.78
MLD5844	27.51	33.75	21.99
MLD5846	31.19	37.15	25.46
MLD5848	30.62	37.43	27.04
MLD5860	27.22	31.76	25.46
MLD5864	8.71	10.96	18.73
MLD5866	7.59	8.71	15.77
MLD5867	10.96	12.92	33.33
MLD5868	8.71	10.96	22.12
MLD5869	7.59	8.71	15.77
MLD5900	48.77	60.11	42.82
MLD5902	48.77	60.11	42.82
MLD5903	48.77	60.11	41.66
MLD5905	43.10	54.44	30.09
MLD5910	35.16	41.97	25.46
MLD5912	30.62	35.73	25.46
MLD5914	30.62	35.73	25.46
MLD5915	45.37	53.31	27.30
MLD5916	31.76	37.43	25.46
MLD5917	44.23	51.04	20.74
MLD5918	28.92	35.73	24.88
MLD5920	28.92	35.73	24.88

PRODUCT	MA	CH	RESIN
MOULDINGS (con't.)			
MLD5922	31.76	37.43	24.73
MLD5924	27.22	32.89	21.24
MLD5926	28.64	35.73	24.88
MLD5928	28.64	37.43	26.39
MLD5940	21.55	25.52	15.06
MLD5942	20.98	25.52	15.91
MLD5944	20.98	25.52	15.91
MLD5946	22.68	26.09	17.36
MLD5948	31.98	36.06	18.52
MLD5949	20.98	25.52	15.91
MLD5950	20.98	25.52	15.34
MLD5952	19.28	21.55	12.16
MLD5954	23.25	26.09	19.10
MLD5956	19.28	21.55	12.16
MLD5958	22.68	26.09	16.50
MLD5960	20.98	25.52	15.34
MLD5962	23.32	26.09	20.25
MLD5964	19.28	21.55	13.10
MLD5966	20.98	25.52	14.74
MLD5968	20.42	24.95	14.74
MLD5970	20.42	24.95	16.20
MLD5972	20.42	24.95	16.20
MLD5974	8.71	9.84	14.87
MLD5975	9.84	10.96	14.47
MLD5976	14.45	17.01	10.41
MLD5978	19.85	22.68	14.18
MLD5979	17.58	21.55	12.73
MLD5980	19.28	23.82	13.61
MLD5982	12.77	16.17	11.74
MLD5986	11.97	15.20	8.39
MLD6000	12.48	14.74	8.68
MLD6002	12.48	14.74	8.68
MLD6004	12.48	14.74	9.14
MLD6005	8.51	9.07	8.22
MLD6006	8.99	10.67	10.53
MLD6007	8.71	10.40	8.82
MLD6018	8.71	9.84	12.04
MLD6020	9.55	11.80	24.31
MLD6022	7.59	8.43	12.08
MLD6024	7.03	7.59	12.73
MLD6026	7.03	7.59	9.14
MLD6028	6.74	7.30	9.14
MLD6030	6.47	7.03	9.14

ROPE MOULDINGS
 * Rope mouldings are priced per LF
 * Custom Rope Species subject to \$100 net set-up charge.

PRODUCT	MA	CH	RESIN
MLD5792	53.55	57.38	54.77
Sold in pairs, 8' lengths ALDER= 57.38			
MLD5796	32.57	36.80	31.29
Sold in pairs, 4' lengths ALDER= 36.80			
MLD5798	24.81	25.98	21.78
Sold in pairs, 4' lengths ALDER= 25.98			

PRODUCT	MA	CH	RESIN
ROPE MOULDINGS (con't.)			
MLD5800	17.00	17.80	13.80
Sold in pairs, 8' lengths ALDER= 17.80			
MLD5802	12.65	14.19	10.54
Sold in 8' lengths ALDER= 14.19			
MLD5804	4.58	5.06	6.02
Sold in 8' lengths ALDER= 5.06			
MLD5870	6.95	8.78	9.21
Sold in 8' lengths ALDER= 8.78			
MLD5872	3.37	3.93	8.22
Sold in 8' lengths ALDER= 3.93			
MLD5874	2.81	3.37	8.22
Sold in 8' lengths ALDER= 3.37			
MLD5876	2.33	2.85	8.22
Sold in 8' lengths ALDER= 2.85			

PEDIMENTS

PRODUCT	MA	CH
PED5663	771.26	896.02
PED5665	691.86	771.26
PED5667	1103.53	1338.36
PED5669	657.84	768.99
PED5671	930.04	986.75
PED5673	703.20	759.91

CORBELS · CAPITALS · ONLAYS
CABINET PARTS · RANGEHOODS
 * In-Stock Maple & Cherry
 * Priced per/pc, per/pkg, or per/card
 * See PL12 - CRV7000 Series

PRODUCT	#/UNIT	MA	CH
CC6300	1	469.56	584.19
CC6300H	2	509.56	624.18
CC6310	1	391.30	517.20
CC6310H	2	431.30	557.20
CC6320	1	448.01	565.97
CC6320H	2	488.00	605.96
CC6326	1	362.94	492.24
CC6326H	2	402.94	532.24
CC6330	1	369.75	497.91
CC6330H	2	409.74	537.92
CC6331	1	255.20	368.62
CC6331H	2	295.20	408.62
CLM6200	1	217.27	245.66
CLM6200H	2	259.76	273.79
CLM6201	1	280.37	358.11
CLM6201H	2	327.61	472.89
CLM6202	1	185.61	216.18
CLM6202H	2	221.24	256.87
CLM6203	1	304.75	413.24
CLM6203H	2	375.16	453.72
CLM6205	1	218.36	236.92
CLM6205H	2	243.84	264.37

PL2

For Custom Species orders of Products available In-Stock in Cherry, use multipliers for pricing based on CH List Price. CC, CP, FT and MLD: WA, RO, WO, MG = CH list + 55%, AL = CH list + 40%, MLD* (Rope): WA, RO, WO, MG = CH list + 20%. If List total is less than \$750.00, add \$115 frt for MLD (excl. rope) or \$60 ft for other custom items. Allow 4 weeks minimum. Custom rope species subject to \$100.00 net set-up charge.

PRICE LIST

WOODCARVINGS · MAPLE AND CHERRY

PRODUCT	#/UNIT	MA	CH	PRODUCT	#/UNIT	MA	CH	PRODUCT	#/UNIT	MA	CH
CORBELS · CAPITALS · ONLAYS				CORBELS · CAPITALS · ONLAYS				CORBELS · CAPITALS · ONLAYS			
CABINET PARTS * RANGEHOODS (con't.)				CABINET PARTS * RANGEHOODS (con't.)				CABINET PARTS * RANGEHOODS (con't.)			
CLM6206	1	218.53	252.21	CRV5100	1	244.99	285.82	CRV5288	1	60.11	75.99
CLM6206H	2	250.16	292.93	CRV5101	1	729.29	942.52	CRV5289	1	78.26	94.14
CLM6208	1	177.63	204.29	CRV5102	1	259.73	316.44	CRV5290	1	1461.58	1571.59
CLM6208H	2	219.20	245.89	CRV5103	1	189.41	238.18	CRV5291	1	817.99	925.85
CLM6209	1	308.99	399.60	CRV5104	1	225.71	314.17	CRV5292	1	884.68	1129.66
CLM6209H	2	391.74	456.81	CRV5105	1	165.59	214.36	CRV5293	1	873.33	1126.26
CLM6210	1	207.44	240.20	CRV5108	1	77.13	97.54	CRV5294	1	89.60	111.15
CLM6210H	2	254.55	277.44	CRV5109	1	156.52	206.42	CRV5494	1	124.00	161.06
CLM6211	1	312.06	384.31	CRV5110	1	273.42	337.99	CRV5495	1	72.59	104.35
CLM6211H	2	363.75	442.31	CRV5112	1	188.28	238.18	CRV5496	1	190.55	224.57
CLM6212	1	201.98	231.46	CRV5113	1	928.91	1131.93	CRV5497	1	119.09	157.65
CLM6212H	2	237.51	276.20	CRV5114	1	301.70	399.24	CRV5498	1	252.00	303.97
CLM6213	1	257.30	348.28	CRV5115	1	218.90	288.09	CRV5499	1	136.00	203.02
CLM6213H	2	311.32	406.82	CRV5116	1	288.09	378.82	CRV5500	2	138.37	167.86
CLM6214	1	198.76	205.69	CRV5117	1	125.90	169.00	CRV5502	2	106.61	131.57
CLM6214H	2	241.63	248.62	CRV5119	1	328.92	431.00	CRV5504	2	80.53	99.81
CLM6222	1	158.31	200.89	CRV5125	2	123.63	137.24	CRV5506	2	116.82	154.25
CLM6226	1	514.76	553.57	CRV5126	2	97.54	133.84	CRV5508	2	99.81	123.63
CLM6226H	2	578.57	606.53	CRV5131	1	152.96	214.36	CRV5510	2	63.52	78.26
CLM6228	1	180.15	209.63	CRV5132	1	70.32	89.60	CRV5512	2	64.65	78.26
CLM6228H	2	222.96	251.78	CRV5134	1	120.23	167.86	CRV5514	2	56.71	70.32
CLM6230	1	159.40	181.24	CRV5135	1	64.65	75.99	CRV5516	2	52.17	63.52
CLM6230H	2	207.44	225.11	CRV5137	1	89.60	111.15	CRV5518	2	42.60	45.80
CLM6232	1	399.60	448.73	CRV5138	1	41.97	53.31	CRV5520	2	30.24	32.52
CLM6232H	2	445.86	493.75	CRV5160	2	58.98	71.45	CRV5522	2	19.28	22.68
CLM6234	1	383.61	616.92	CRV5164	2	47.64	61.25	CRV5524	2	39.70	48.77
CLM6234H	2	433.73	680.10	CRV5168	2	66.92	72.59	CRV5526	2	35.16	43.10
CLM6236	1	304.54	387.96	CRV5169	2	49.90	63.52	CRV5527	1	93.00	117.96
CLM6236H	2	346.07	424.17	CRV5178	2	53.94	61.25	CRV5528	2	30.62	37.43
CP6240	1	176.94	209.83	CRV5179	2	40.83	52.17	CRV5529	1	58.98	83.93
CP6242	1	165.59	196.22	CRV5250	1	154.25	225.71	CRV5530	2	56.71	74.86
CP6244	1	155.39	183.74	CRV5253	1	216.63	282.42	CRV5532	2	47.64	56.71
CP6246	1	164.46	191.68	CRV5256	1	183.74	271.07	CRV5534	2	40.83	51.04
CP6248	1	155.39	180.34	CRV5257	1	305.10	394.70	CRV5536	2	104.35	129.30
CP6250	1	129.30	169.00	CRV5259	1	238.18	306.34	CRV5538	2	89.60	112.29
CRV5020	1	249.04	311.65	CRV5260	1	1747.57	1879.11	CRV5540	2	55.58	70.32
CRV5022	1	158.79	181.47	CRV5261	1	911.25	1076.36	CRV5542	2	53.31	65.78
CRV5024	2	127.03	149.71	CRV5262	1	260.87	345.93	CRV5544	2	40.83	51.04
CRV5032	1	70.32	89.60	CRV5263	1	555.76	736.10	CRV5546	2	35.16	44.23
CRV5034	1	97.94	122.49	CRV5264	1	247.26	315.31	CRV5568	2	96.41	121.36
CRV5036	4	96.46	111.15	CRV5265	1	277.30	353.62	CRV5570	2	91.87	114.55
CRV5038L	1	146.31	169.00	CRV5266	1	158.79	206.42	CRV5572	2	93.00	115.69
CRV5038R	1	146.31	169.00	CRV5267	1	86.20	117.96	CRV5574	2	88.47	99.81
CRV5046	1	209.66	233.65	CRV5270	1	753.50	810.22	CRV5576	2	70.32	88.47
CRV5047	1	92.00	115.69	CRV5271	1	203.02	258.60	CRV5578	2	53.31	65.78
CRV5048	1	133.84	181.47	CRV5272	1	104.35	129.30	CRV5580	1	40.83	48.77
CRV5049	1	56.71	74.86	CRV5273	1	69.19	85.07	CRV5582	1	32.89	40.83
CRV5066	2	140.64	169.00	CRV5280	1	1350.36	1452.00	CRV5584	4	78.26	89.60
CRV5067	2	146.31	180.34	CRV5281	1	875.69	1091.10	CRV5586	4	73.72	78.26
CRV5068	2	108.88	117.96	CRV5282	1	916.20	1131.93	CRV5588	8	49.90	62.38
CRV5075	2	47.64	63.52	CRV5283	1	529.18	678.25	CRV5590	1	89.60	100.94
CRV5079	4	86.20	100.94	CRV5284	1	338.00	451.41	CRV5592	1	73.72	89.60
CRV5097	1	337.99	433.26	CRV5285	1	250.66	322.11	CRV5594	2	112.29	115.69
CRV5098	1	203.02	225.71	CRV5286	1	236.76	328.92	CRV5596	2	89.60	100.94
				CRV5287	1	248.43	338.14	CRV5604	2	225.71	282.42

For Custom Species orders, use multipliers for pricing. CLM's in non-stock species avail for prompt shipment as indicated:

AL & RO = CH list -15%. (CLM6222 not avail in RO.) Call for CLM availability in additional island & bar heights.

Request quote for custom Mantels & Rangehoods.

PL3

PRICE LIST

WOODCARVINGS · MAPLE, CHERRY AND LINDENWOOD

PRODUCT	#/UNIT	MA	CH	PRODUCT	#/UNIT	MA	CH	PRODUCT	#/UNIT	LW	
CORBELS · CAPITALS · ONLAYS				CORBELS · CAPITALS · ONLAYS				LINDENWOOD WOODCARVINGS (con't)			
CABINET PARTS · RANGEHOODS (con't.)				CABINET PARTS · RANGEHOODS (con't.)							
CRV5606	4	132.70	165.59	FT6280	1	39.30	43.13	CRV5046	1	180.81	
CRV5608	4	149.71	186.01	FT6280H	2	49.12	53.46	CRV5048	1	97.63	
CRV5610	4	146.31	169.00	FT6282	1	26.20	36.03	CRV5049	1	46.58	
CRV5612	4	141.78	165.59	FT6282H	2	37.86	44.92	CRV5050	1	121.96	
CRV5614	2	86.20	97.54	FT6284	1	44.22	50.22	CRV5051	1	69.20	
CRV5616	4	43.10	44.23	FT6284H	2	55.77	61.12	CRV5053	1	66.37	
CRV5618	2	65.22	68.05	FT6286	1	40.40	44.22	CRV5055	1	73.88	
CRV5620	2	79.39	85.07	FT6286H	2	54.41	58.07	CRV5058	1	120.66	
CRV5621	1	771.26	896.02	FT6288	1	44.22	49.80	CRV5060	1	77.99	
CRV5622	1	68.05	93.08	FT6290	1	66.92	81.10	CRV5063	1	38.86	
CRV5624	1	32.89	40.83	FT6290H	2	85.42	99.60	CRV5065	2	113.93	
CRV5626	1	63.52	74.86	FT6291	1	57.28	68.05	CRV5066	2	97.19	
CRV5627	1	282.42	390.16	FT6291H	2	75.78	86.55	CRV5067	2	106.09	
CRV5628	1	70.32	83.93	FT6292	1	58.98	70.89	CRV5068	2	71.45	
CRV5629	1	224.57	319.84	FT6292H	2	77.48	89.39	CRV5069	1	98.87	
CRV5630	1	130.20	168.00	FT6293	1	48.77	58.98	CRV5070	1	88.47	
CRV5631	1	167.86	204.16	FT6293H	2	67.27	77.48	CRV5071	1	97.42	
CRV5632	1	103.88	116.60	FT6294	1	91.87	110.58	CRV5072	1	91.67	
CRV5633	1	146.31	175.80	FT6294H	2	110.37	129.08	CRV5073	1	82.56	
CRV5634	4	127.03	161.06	FT6295	1	72.59	85.63	CRV5074	1	55.58	
CRV5635	1	80.53	97.54	FT6295H	2	91.09	104.13	CRV5075	2	36.60	
CRV5636	2	117.96	145.18	RH6071	1	1082.66	1315.67	CRV5077	1	73.77	
CRV5637	2	127.03	154.25	RH6074	1	1481.27	1632.11	CRV5078	2	264.26	
CRV5638	2	86.20	100.94	RH6077	1	812.09	981.08	CRV5079	4	81.49	
CRV5639	2	90.74	107.75	RH6080	1 set	861.65	985.62	CRV5087	1	94.60	
CRV5640	2	124.76	157.65	RH6083	1	1159.15	1324.75	CRV5089	1	62.18	
CRV5641	2	193.95	238.18	RH6086	1	834.77	985.62	CRV5090	4	28.89	
CRV5642	2	95.27	106.61	RH6089	1	680.34	826.83	CRV5091	1	530.24	
CRV5643	2	136.10	165.59	RH6092	1	842.71	985.62	CRV5092	1	427.59	
CRV5644	2	136.10	169.00	RH6095	1	839.31	957.26	CRV5093	4	28.49	
CRV5645	2	221.17	297.16	RH6098	1	1323.61	1499.41	CRV5094	1	265.52	
CRV5647	2	179.20	235.91	VAL6400	1	118.72	159.40	CRV5095	1	146.63	
CRV5649	2	136.10	174.67	VAL6402	1	103.52	137.64	CRV5097	1	258.98	
CRV5651	1	146.31	180.34	VAL6404	1	97.84	131.96	CRV5098	1	150.02	
CRV5653	1	100.94	120.23	VAL6406	1	82.08	107.36	CRV5099	1	120.38	
CRV5655	1	66.92	85.07					CRV5100	1	215.58	
CRV5657	1	832.10	942.34					CRV5105	1	142.07	
CRV5659	1	62.38	85.07					CRV5109	1	119.57	
CRV5661	2	172.40	220.03					CRV5110	1	209.84	
CRV5667	1	290.50	384.84					CRV5112	1	151.72	
CRV5669	1	153.50	193.62					CRV5113	1	698.98	
CRV5700	1	224.57	248.39					CRV5114	1	244.93	
CRV5702	1	201.89	217.77					CRV5115	1	197.07	
CRV5704	1	179.20	191.68					CRV5116	1	245.61	
FT6260	1	70.32	78.26					CRV5117	1	111.44	
FT6262	1	81.66	96.41					CRV5120	1	131.04	
FT6264	1	58.98	65.78					CRV5121	1	86.88	
FT6266	1	72.59	81.66					CRV5123	4	58.18	
FT6270	1	74.05	90.74					CRV5125	2	90.21	
FT6272	2	69.90	86.20					CRV5126	2	85.57	
FT6274	1	62.38	66.92					CRV5127	1	193.97	
FT6276	1	49.13	54.04					CRV5128	1	155.83	
FT6276H	2	56.82	63.85					CRV5129	1	313.76	
FT6278	1	49.13	52.95					CRV5131	1	120.00	
FT6278H	2	58.87	64.68					CRV5132	1	63.52	
								CRV5134	1	91.23	

LINDENWOOD WOODCARVINGS

* In-Stock Lindenwood

* Priced per/pc, per/pkg, or per/card

PRODUCT #/UNIT LW

LINDENWOOD WOODCARVINGS

CRV5020	1	193.92
CRV5022	1	127.12
CRV5024	2	117.51
CRV5026	2	80.66
CRV5028	2	113.03
CRV5030	1	111.41
CRV5032	1	65.78
CRV5034	2	90.17
CRV5036	4	87.76
CRV5038L	1	78.52
CRV5040	1	192.50
CRV5043	1	98.16
CRV5044	1	65.09

PL4

For Custom Species orders of Products available In-Stock in Cherry, use multipliers for pricing based on CH List Price. CRV and PED: WA, RO, WO, MG = CH list + 40%, AL = CH list + 30%. Call for a custom species quote for Mantels, Rangehoods and Valances. If List total is less than \$750.00, add \$60.00 frt. Allow 4 weeks.

PRICE LIST

WOODCARVINGS · LINDENWOOD AND MANTELS AND MEDALLIONS AND MON REALE™

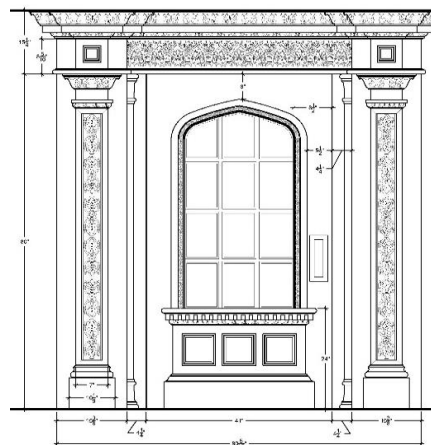
PRODUCT	#/UNIT	LW
LINDENWOOD WOODCARVINGS (con't)		
CRV5135	1	52.36
CRV5139	1	271.15
CRV5141	1	58.15
CRV5143	1	43.11
CRV5160	2	43.09
CRV5164	2	36.84
CRV5166	1	48.08
CRV5168	2	49.34
CRV5169	2	44.80
CRV5172	2	54.63
CRV5173	2	41.55
CRV5177	1	39.91
CRV5178	2	43.42
CRV5179	2	37.65
CRV5181	4	72.18
CRV5183	4	63.89
CRV5185	4	73.56
CRV5187	4	63.46
CRV5191	4	56.65
CRV5192	4	53.23
CRV5193	4	57.62
CRV5194	4	50.16
CRV5195	1	184.67
CRV5197	2	39.66
CRV5198	2	31.46
CRV5205	1	938.65
CRV5210	1	440.00
CRV5216	1	486.20
CRV5218	1	301.71
CRV5220	1	261.45
CRV5226	1	684.97
CRV5228	1	324.53
CRV5230	1	246.17
CRV5236	1	293.39
CRV5238	1	163.34
CRV5240	1	106.49
CRV5250	1	132.72
CRV5253	1	181.22
CRV5256	1	170.99
CRV5259	1	204.66
CRV5289	1	51.81
CRV6050	1	201.80
CRV6052	1	112.90
CRV6058	2	116.64
CRV6059	2	93.36
CRV6070	2	115.80
CRV6072	2	89.00
CRV6078	1	119.52
CRV6079	1	85.20
CRV6082	2	126.84
CRV6084	2	86.28
CRV6087	1	189.30
CRV6089	1	139.50
CRV6091	1	74.70
CRV6092	2	79.00
CRV6093	2	69.00

PRODUCT	#/UNIT	LW
LINDENWOOD WOODCARVINGS (con't)		
CRV6097	1	48.06
CRV6098	2	68.40
CRV6099	2	49.08
CRV6110	1	199.86
CRV6112	1	142.02
CRV6116	2	79.40
CRV6118	1	147.60
KEY6065	1	132.52
KEY6067	1	110.20
See PL12 - CRV7000 Series		

MANTELS

* Pre-fabricated for easy assembly
 * All mantels are unfinished

PRODUCT	#/UNIT	LW
MAN9012	1	3153.08
MAN9015	1	3153.08
MAN9018	1	3134.93
MAN9021	1	3510.00
MAN9030	1	1437.89
MAN9033	1	1544.78
MAN9035	1	1665.01
MAN9036	1	1606.03
MAN9039	1	1781.83
MAN9042	1	1723.98
MPB9012	1 pair	275.61
MPB9015	1 pair	275.61
MPB9018	1 pair	337.99
MPB9021	1 pair	300.56



IN-HOUSE DESIGN SERVICES

Contact our in-house design team for help on your project. We can assist from selecting a crown to designing a custom mantel to the design of an entire house. Contact us today!
 1-800-558-0119 or Designs@WhiteRiver.com
 www.WRDesignServices.com

PLASTER MEDALLIONS

* In-Stock ornate plaster medallions

PRODUCT	#/UNIT	PLASTER
MED 1230	1	605.95
MED 1429	1	575.38
MED 1512	1	267.49
MED 1516	1	310.07
MED 1534	1	771.90
MED 1630	1	553.54
MED 1632	1	598.31
MED 1660	1	1715.08

MON REALE™ HARDWOOD MOULDINGS

* In-Stock Poplar
 * Specified length upchg 20% / 3'-14', 30% / 15'-16'.
 * Spec'd lengths subject to availability.
 For policy, see page PL17
 * Resin min. 5', max. 12', whole feet only.
 * Denote Resin when ordering (CM8801 Resin).

PRODUCT	POP	RESIN
BA8440	9.92	38.73
BA8442	9.69	35.79
BA8444	9.92	40.50
BB8100	7.05	30.32
BB8100-B	7.05	32.21
BB8101	7.62	32.93
BB8102	7.62	27.97
BB8108	7.34	26.12
BB8109	7.89	33.85
BB8110	6.54	20.04
BB8111	7.83	26.55
BB8122	7.47	24.91
CA8320	11.89	29.42
CA8322	8.89	29.42
CA8326	11.89	29.42
CA8330	16.89	48.48
CA8336	16.89	43.16
CA8338	6.78	20.78
CA8340	8.10	23.76
CA8342	7.89	21.86
CA8344	8.76	21.99
CA8345	7.66	23.18
CA8346	8.89	27.59
CA8347	11.89	28.90
CA8348	11.89	29.62
CA8349	8.92	20.40
CA8350	8.92	22.46

For Custom Species orders of products available In-Stock in Lindenwood only, use multipliers for pricing based on LW. List Price. CRV (LW): WA, WO = LW list + 90%, RO, MG, CH = LW list + 80%, AL, MA = LW list + 60%. If List total is less than \$750.00, add \$60.00 frt.

PL5

PRICE LIST

MON REALE™ · ORNAMENTALLY EMBOSSED

PRODUCT	POP	RESIN	PRODUCT	POP	RESIN	ORNAMENTALLY EMBOSSED™		
MON REALE (con't)			MON REALE (con't)			HARDWOOD MOULDINGS		
CM8780	19.65	63.92	FR8960	14.48	33.05	* In-Stock Poplar (POP), Red Oak (RO) denoted.		
CM8781	23.89	55.76	FR8965	16.14	30.92	* Specified length upchg 20% / 3'-14',		
CM8782	13.67	32.42	FR8966	17.47	41.95	30% / 15'-16'.		
CM8783	7.83	17.17	FR8967	17.47	40.38	* Spec'd lengths subject to availability.		
CM8784	18.49	58.14	FR8968	17.47	40.38	For policy, see page PL17.		
CM8785	16.01	51.33	FR8969	23.60	63.20	* Resin min. 5' order, max. 12', whole feet only.		
CM8786	11.38	24.43	FR8970	18.71	56.36	* Denote Resin when ordering (CM69 Resin).		
CM8790	7.32	22.10	FR8971	17.47	39.97	* Cast from Poplar (A), Red Oak (B), Both (C)		
CM8801	13.67	29.85	FR8975	17.39	33.04	PRODUCT	POP	RESIN
CM8808	19.67	46.72	FR8980	18.12	40.76	BA42	6.25	39.97 A
CM8809	26.84	71.11	FR8981	16.14	32.80	BA43-C	5.98	33.05 A
CM8810	11.38	23.31	FR8982	16.41	26.71	BA44	5.55	29.74 A
CM8812	13.18	40.67	FR8983	16.41	23.90	BA46	5.35	31.98 C
CM8820	7.83	17.65	FR8985	16.41	23.90	BA47	5.61	31.45 A
CM8823	10.52	26.31	PM8511	6.15	12.73	BA48	5.35	33.36 A
CM8825	17.63	42.22	PM8520	5.55	13.88	BB15	4.23	13.80 A
CM8826	18.84	55.76	PM8522	4.46	11.34	BB17	6.89	30.09 A
CM8827	14.92	36.96	PM8523	5.25	13.88	CA30	4.39	17.94 A
CM8830	13.67	36.34	PM8524	4.46	11.34	CA31	5.31	24.22 A
CM8834	8.39	21.06	PM8525	4.87	11.34	CA36	4.20	20.25 C
CM8837	13.27	37.15	PM8526	4.46	11.34	CA36	4.20	20.25 C
CM8840	16.89	42.69	PM8527	5.25	14.47	CA37	5.48	22.90 A
CM8850	7.92	33.34	PM8528	4.46	11.34	CA38	7.50	30.37 A
CM8852	5.45	21.41	PM8529	4.87	12.15	CA39	4.80	18.12 A
CM8853	22.32	56.38	PM8530	7.84	21.84	CA40	7.50	25.71 A
CM8854	18.95	48.54	PM8532	7.84	20.22	CA41	4.80	20.25 A
CM8856	13.15	38.02	PM8533	6.60	12.88	CA43	4.20	23.09 A
CM8857	7.83	17.65	PM8535	5.05	12.15	CA45	4.20	24.05 A
CM8858	18.45	40.51	PM8536	8.12	20.94	CA47	4.20	21.98 A
CM8859	12.25	23.14	PM8537	7.84	23.18	CM69	4.76	14.86 A
CM8860	7.55	22.44	PM8538	5.05	11.33	CM70	4.74	24.97 A
CM8861	11.38	26.45	PM8540	4.46	11.34	CM71	4.81	25.90 A
CM8862	11.38	28.48	PM8541	5.25	12.15	CM72	4.20	21.42 A
CM8863	5.45	14.50	PM8545	4.46	11.34	CM73	9.60	30.89 A
CM8864	7.89	27.40	PM8546	5.64	11.80	CM74	8.65	24.14 C
CM8865	6.42	21.89	PM8552	6.04	12.73	CM75	8.95	34.14 A
CTY1230	10.30	19.34	PM8553	7.84	19.72	CM76	7.45	35.38 A
CTY1234	8.05	19.65	PM8555	15.53	40.51	CM77	5.88	25.21 A
CTY1238	5.71	11.10	PM8557	7.46	26.62	CM80	6.92	32.24 A
CTY1242	10.30	26.11	PM8558	5.90	13.88	CM81	6.11	26.50 A
CTY1246	8.05	19.65	PM8560	5.70	13.88	CM82	9.04	33.00 A
CTY1250	10.30	26.11	PM8561	4.83	11.34	CM83	6.92	33.07 A
CTY1254	8.05	19.65	PM8562	5.60	14.99	CM84	7.45	37.72 A
CTY1258	5.71	11.10	PM8563	7.84	16.65	CM85	5.20	20.60 A
CTY1262	5.71	11.10	PM8564	5.70	13.88	CM86	9.38	44.38 A
FR8920	9.12	21.32	PM8565	4.83	11.34	CM87	8.65	26.56 A
FR8921	11.01	22.91	PM8566	7.84	22.52	CM88	4.06	14.86 A
FR8922	11.15	22.85	PM8567	5.15	11.66	CM89	4.13	14.86 A
FR8923	10.60	22.87	PM8568	7.43	16.20	CM90	6.60	31.30 A
FR8940	10.60	21.32	PM8569	7.43	16.20	CM93	6.60	33.40 A
FR8950	17.39	37.71	PM8570	7.69	20.90	CM94	6.60	33.40 A
FR8953	14.48	30.94	PM8571	7.84	20.90	CM95	4.29	19.55 A
FR8954	14.99	33.31	PM8572	11.01	24.78	CM96	4.29	19.55 A
FR8955	17.10	33.31	PM8573	7.69	17.00	CR61	3.69	13.76 A
FR8956	16.14	30.94	PM8577	7.32	16.65	CR63-A	5.63	18.52 A
FR8957	14.48	33.31	PM8580	7.84	24.62	CR64	5.25	18.52 A
FR8958	14.99	33.31				CR65	3.69	13.32 A

PL6

Species In-Stock for custom mouldings: RO, WO, CH, MG, WA, BI, Clear & Knotty AL, PI, CY, HMA, MA & POP. Exotic species avail. upon request. Please call with profiles, species & footages for a quote.

PRICE LIST

ORNAMENTALLY EMBOSSED · TRADITIONAL MOULDINGS

PRODUCT	POP	RESIN	PRODUCT	POP	OAK	RESIN	PRODUCT	POP	OAK	RESIN
ORNAMENTALLY EMBOSSED (con't)			TRADITIONAL (con't)				TRADITIONAL (con't)			
CR66	5.17	22.37 A	B460	3.95		26.65 A	CH650	3.10		19.10 A
CR67	6.36	11.53 A	B462	4.69		32.52 A	CH659	5.49		17.05 A
CR68	6.55	30.09 A	B463	4.39		32.40 A	CH689	5.99		29.32 A
CR69	7.73	14.36 A	B464	4.69		29.58 A	CH690	3.59		18.52 C
CR70	4.29	19.97 A	B469	4.39		30.20 A	CH693	5.97		27.74 A
CR72	4.29	19.97 A	B470	7.29		54.77 A	CO670	7.98		56.03
DH99	9.92	34.92 A	B471	5.36		41.33	CO671	6.69		35.04
LM90	5.79	22.03 A	B475	4.39		27.06	CO673	6.93		32.53
LM91	5.79	32.41 A	B476	4.39		34.48	CO674	3.66		24.55
LM92	5.79	22.03 A	B477	4.39		33.17	CO675	3.15		15.90
PM02	2.99	10.19 A	BB153	3.57		12.80 A	CO676	7.85		53.43
PM03	2.86	10.40 A	BB155	2.35		11.60 A	CO677	7.98		61.26
PM07	2.95	9.84 A	BB156	3.57		12.58 A	CO678	7.56		51.13
PM08	3.03	9.84 A	BB157	5.99		33.54 A	CO679	4.05		57.95
PM09	3.03	9.84 A	BB158	5.63		22.44 A	CO680	3.76		24.62
PM10	3.03	8.68 A	BB159	5.04		25.11 A	CO681	3.25		19.49
PM11	2.59	8.68 A	BB160	4.94		24.86	CO683	3.76		29.64
PM12	2.95	8.68 A	BB162	4.94		27.84	CO684	3.25		20.02
PM14	2.79	8.68 C	BS126	1.58	1.79	7.24 A	CO686	3.76		21.65
PM20	4.69	10.60 A	CA280	2.72		24.96	CO687	3.25		29.84
PM22	3.81	9.14 A	CA281	2.72		23.33	CO693	3.94		29.00
PM22PL	3.81	9.14 A	CA282	2.88		21.84	CO694	3.25		19.08
PM23B	4.69	10.60 A	CA284	3.63		28.20	CO695	3.56		24.85
PM24	4.69	9.57 A	CA285	2.88		23.02	CO698	3.15		20.10
PM25	4.86	11.74 A	CA300	2.60	4.41	16.48 C	CO701	4.98		33.91 A
PM27	3.33	10.60 A	CA302	3.14		19.99 A	CO702	7.71		38.90 A
PM29	3.29	10.41 A	CA322	3.14		24.52 A	CO703	6.26		35.77 A
PM50	2.63	8.68 A	CA323	3.14	4.89	19.45 C	CO704	26.74		78.51
PM52	3.15	10.39 A	CA324	3.14		29.24 A	(POLYURETHANE ONLY)			
PM54	2.95	10.49 A	CA325	6.89		37.20 A	CO705	4.81		25.81 A
PM55	3.03	10.49 A	CA326	2.72		19.22 A	CO707	3.25		20.22 A
PM56-B	2.92	8.68 A	CA327	3.14		17.60 A	CO708	9.84		78.21 A
PM57	2.63	9.71 A	CA328	9.87		50.84 A	CO709	8.67		51.60 A
PM58	2.63	8.68 A	CA329	15.90		106.86 A	CO711	7.35		40.23 A
PM59	2.48	8.68 A	CA335	2.40	3.16	14.41 A	CO713	5.11		32.40 A
PM70	4.25	15.63 A	CA342	2.88		19.10 A	CO715	5.92		27.48
PM71	3.32	10.39 A	CA344	2.88		19.72 A	CO716	4.32		22.82
PM72	4.60	9.14 A	CA360	2.88		18.75 A	CO720	1.79		6.24 A
PM73	2.95	8.68 A	CA362	5.23		30.37 A	CO723	1.58		7.24 A
PM74	2.73	7.24 A	CA363	2.72		17.15 A	CO730	2.26		7.97 A
			CA364	2.88		18.97 A	CR800	5.76		38.13 C
			CA365	5.23		28.04	CR801	7.98		66.95 A
			CA366	3.86		21.98	CR802	9.84		69.59 A
			CA380	5.55		30.37 A	CR806	4.70		31.62 A
			CA382	4.04		25.66 A	CR810	3.63	6.32	23.73 A
			CA388	5.05		26.13 A	CR820	3.18	5.04	18.34 C
			CA389	5.23		28.43 A	CR830	4.70		33.52 C
			CA390	6.14		41.50 A	CR840	2.53		9.84 A
			CA391	5.24		29.19 A	CR841	4.98		37.72 A
			CA392	6.14		37.45 A	CR850	2.80		16.92 A
			CA393	5.24		26.62 A	CR860	5.76		41.75 A
			CDS1X4	4.14		22.66 A	CR862	7.66		44.83 A
			CDS1X6	4.90		33.85 A	CR864	6.97		25.59 A
			CH600	5.25		22.34	CR866	4.09		26.74 A
			CH601	3.59		19.49	CR872	3.37		24.58 A
			CH610	3.59		19.10 A	CR880	4.70		33.19 A
			CH640	4.75		18.52 A	CR881	4.52		21.87 A
TRADITIONAL HARDWOOD MOULDINGS										
* In-Stock Poplar (POP), Red Oak (RO) denoted.										
* Specified length upchg 20% / 3'-14', 30% / 15'-16'.										
* Spec'd lengths subject to availability. For policy, see page PL17.										
* Resin min. 5' order, max. 12', whole feet only.										
* Denote Resin when ordering (CA300 Resin).										
* Cast from Poplar (A), Red Oak (B), Both (C)										
PRODUCT	POP	OAK	RESIN							
B400	3.70	5.19	20.16 C							
B401	4.69		38.13 A							
B403	3.95		29.32 A							
B416	3.95		23.97 A							
B435	3.07		18.46 A							
B442	5.57		47.43 A							

Species Key: RO-Red Oak, WO-White Oak, CH-Cherry, MG-Mahogany, WA-Walnut, BI-Birch, AL-Alder, PI-White Pine, CY-Cypress, HMA-Hard Maple, MA-Soft Maple & POP-Poplar

PL7

PRICE LIST

TRADITIONAL MOULDINGS · DECO PREFINISHED MOULDINGS

PRODUCT	POP	OAK	RESIN	PRODUCT	POP	OAK	RESIN	PRODUCT	POP	OAK	RESIN
TRADITIONAL (con't)				TRADITIONAL (con't)				TRADITIONAL (con't)			
CR882	3.04		15.77 A	PM485	1.87		7.24 A	RO160	5.34		
CR891	15.53		61.29	PM500	2.42		10.30 A	RO161	3.66		
DE168	3.56		7.52 A	PM505	2.64	3.51	13.97 A	RO162	3.99		
DE169	4.20		9.03 A	PM511	2.07		7.76 C	RO163	4.18		
DE170	4.55		10.39 A	PM520	2.07		8.80 A	RO164	8.87		
DE171	5.06		16.20 A	PM521	3.42		10.41 A	RO165	9.61		
DE172	4.78		16.20 A	PM525	2.07	4.32	8.80 A	RO166	7.42		
DE173	4.22			PM526	3.77		12.80 A	RO167	12.49		
DE180	5.12		10.30	PM527	3.76		14.81 A	RO168	13.10		
DH190	9.60		39.46 A	PM529	2.81		10.18 A	RO169	4.79		
DS100	1.72		8.68 A	PM530	1.79		8.80 A	SBB003	5.06		
DS110	1.72		8.68 A	PM535	1.89		9.03 A	SBB004	4.20		
DS111	2.30		8.68 A	PM537	1.84		7.24 A	SBB005	3.51		
DS1X2	2.30		10.14 A	PM538	2.07		8.68 A	SCB045	56.02		
DS1X4	3.03		17.72 A	PM539	1.84		8.68 A	SCB046	80.53		
DS1X6	4.48		27.85 A	PM540	1.97		8.80 A	SCB047	66.52		
DS1X8	5.63		36.71 A	PM553	3.88		14.92 A	TC120	4.91		17.89 A
DS1X10	7.56		46.84 A	PM560	1.97		8.68 A	TC140	4.91		15.09 A
DS1X12	9.35		56.94 A	PM561	1.97		9.03 A	TC150	8.48		33.31 A
KEY031	22.86			PM569	1.97		9.03 A				
KEY032	28.96			PM570	2.53		10.65 A				
KEY033	50.31			PM577	3.12		15.39 A				
KEY034	(resin only)		86.15	PM580	2.60		9.57 A				
LBB007	4.73			PM582	2.53		9.03 A				
LBB008	7.70			PM585	2.16		6.02 A				
LBB009	5.78			PM586	2.57		9.72 A				
LBRO11	7.75			PM590	6.99		17.86 A				
LCB040	63.03			PM593	2.86		10.30 A				
LCB041	91.03			PM595	1.97		8.22 A				
LCB042	77.02			PM597	4.19		16.77 A				
MB189	4.65			PM598	3.70		13.98 A				
MB191	3.40			PM602	2.07		10.21 A				
MB192	10.99			PM603	3.92		12.01 A				
MM187	14.92			PM604	2.48		9.88 A				
MM195	16.73		61.06 A	PM605	3.63		19.60 A				
OS101	2.65		8.39 A	PM608	3.73		20.77 A				
OS102	2.65		9.88 A	PM609	2.37		9.68 A				
PB170	6.06			PM610	1.89		8.83 A				
PB171	4.54			PM611	1.97		9.20 A				
PB183	7.39			PM612	1.89		9.38 A				
PB185	8.77			PM613	1.97		9.20 A				
PB186	14.43			PM614	1.93		9.20 A				
PB187	11.78			PM615	2.80		10.13 A				
PB192	5.91			PM616	2.80		11.81 A				
PB193	7.39			PM617	1.55		9.20 A				
PB200	8.84			PM618	1.55		9.20 A				
PB202	8.64			PM619	1.55		9.20 A				
PB204	8.54			PM620	5.36		41.29 A				
PED283	3.63		21.50 A	PM622	4.47		28.29 A				
PED284	3.63		22.62 A	PS289	2.10		9.16 A				
PED285	3.63		20.77 A	PS290	2.10		9.41 A				
PED287	5.94		27.64 A	QR105	1.91		7.24 A				
PED288	4.49		23.31 A	RE104	2.35		10.30 A				
PM480	6.89		23.26 A	RE107	1.97		8.68 A				
PM482	3.42		10.30 A	RO158	5.82						
PM484	2.23		7.44 A	RO159	4.09						

DECO PREFINISHED MOULDINGS

*16' Pre-Finished Polystyrene

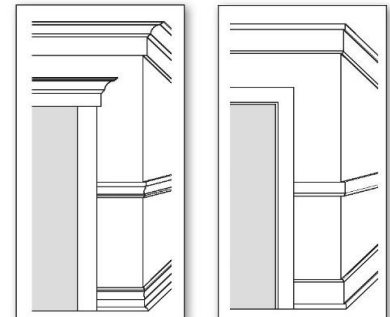
*Sold as individual pcs or full boxes

*\$35 packaging fee applies to individual sales

*See below for finishes

PRODUCT	PER PC		PIECES
	BROKEN	FULL	
PRODUCT	BOX	BOX	PER BOX
Deco1	76.80	68.48	8 pcs
BL, MA, WA, WH		547.84	per box
Deco2	45.76	40.80	18 pcs
MA, WH		734.40	per box
Deco3	60.80	54.24	14 pcs
MA, WH		759.36	per box
Deco4	47.84	42.56	14 pcs
WH		595.84	per box
Deco5	60.00	53.60	10 pcs
BL, WA, WH		536.00	per box
Deco6	74.72	66.56	8 pcs
AL, BL, BR, WA, WH		532.48	per box
Deco7	60.80	54.24	9 pcs
AL, BR, WH		488.16	per box

AL-Brushed Aluminum, BL-Black Stained
BR-Brushed Bronze, MA-Natural Mahogany
WA-Natural Walnut, WH-Painted White



PL8

Species In-Stock for custom mouldings: RO, WO, CH, MG, WA, BI, Clear & Knotty AL, PI, CY, HMA, MA & POP. Exotic species avail. upon request. Please call with profiles, species & footages for a quote.

PRICE LIST

LCD'S

LARGE COMBINATION DETAILS (LCD'S)			PRODUCT	POP	RESIN	PRODUCT	POP	RESIN
* In-Stock Poplar			LCD4065	7.60	45.36	LCD6313	7.14	29.45
* Shipped as individual mouldings.			LCD4067	10.92	46.83	LCD6314	7.82	49.68
* Specified length upchg 20% / 3' -14', 30% / 15'-16'			LCD4071	11.30	63.12	LCD6315	6.67	40.24
* Spec'd lengths subject to availability. For policy, see page PL17.			LCD4077	8.27	49.88	LCD6317	9.85	39.95
* Resin min. 5' order, max. 12', whole feet only.			LCD4100	15.80	73.81	LCD6318	8.45	39.68
* Denote Resin when ordering (LCD4206 Resin).			LCD4110	17.87	69.25	LCD6320	6.55	34.69
PRODUCT	POP	RESIN	LCD4130	13.61	57.91	LCD6330	15.81	54.20
LCD3031	10.24	43.85	LCD4203	21.55	112.06	LCD6332	12.28	58.75
LCD3034	8.62	31.74	LCD4206	11.48	71.53	LCD6334	13.81	44.39
LCD3045	8.37	30.69	LCD4300	5.94	43.68	LCD8033	21.03	95.06
LCD3047	7.15	29.72	LCD4305	5.94	42.37	LCD8034	18.35	58.26
LCD3055	10.86	50.87	LCD4307	5.94	36.26	LCD8048	16.82	83.15
LCD3056	6.71	32.57	LCD4309	6.96	37.73	LCD8070	22.02	112.19
LCD3060	9.77	49.81	LCD4310	7.47	36.53	LCD8071	10.09	56.95
LCD3062	8.88	36.79	LCD4320	9.53	40.01	LCD8072	20.18	106.03
LCD3064	12.20	54.30	LCD4322	9.52	49.47	LCD8073	9.96	49.88
LCD3100	14.21	36.98	LCD4324	12.03	65.98	LCD8075	13.43	68.43
LCD3110	14.12	46.90	LCD4325	10.03	58.77	LCD8078	19.00	86.30
LCD3130	14.67	54.62	LCD4327	16.28	67.79	LCD8079	29.29	128.41
LCD3203	12.13	75.04	LCD4330	13.79	88.17	LCD8081	49.32	148.02
LCD3206	16.96	86.38	LCD4332	11.76	66.32	LCD8082	22.83	92.68
LCD3209	10.87	49.06	LCD4338	15.13	62.65	LCD8085	22.03	96.09
LCD3212	12.13	70.99	LCD6031	7.94	29.39	LCD8088	21.07	81.38
LCD3300	8.59	34.11	LCD6035	9.73	40.10	LCD8091	48.54	136.81
LCD3306	9.99	53.97	LCD6036	9.73	40.10	LCD8092	21.00	74.05
LCD3310	12.61	68.11	LCD6039	9.73	50.48	LCD8093	15.65	76.55
LCD3311	8.98	50.52	LCD6042	12.96	45.60	LCD8094	21.42	119.47
LCD3313	7.82	46.94	LCD6062	7.94	28.94	LCD8097	15.20	84.53
LCD3315	11.54	63.91	LCD6069	10.58	43.85	LCD8099	17.18	75.03
LCD3318	7.92	44.21	LCD6073	11.21	46.26	LCD8102	21.24	112.64
LCD3322	6.55	35.65	LCD6075	10.72	46.26	LCD8136	78.32	214.69
LCD3330	14.40	48.75	LCD6110	13.58	32.66	LCD8138	50.56	159.88
LCD3332	12.85	61.36	LCD6141	14.21	36.98	LCD8140	43.71	151.94
LCD3333	17.51	73.35	LCD6143	8.87	48.42	LCD8142	50.73	154.48
LCD3334	25.21	94.37	LCD6144	10.36	44.00	LCD8144	27.67	85.09
LCD3335	14.31	69.14	LCD6145	14.82	59.34	LCD8146	129.61	226.11
LCD3337	16.60	42.89	LCD6147	14.56	37.68	LCD8148	64.29	128.73
LCD3338	11.40	45.75	LCD6148	13.43	33.21	LCD8150	34.81	119.74
LCD3340	16.38	49.96	LCD6149	11.08	60.23	LCD8152	101.67	231.35
LCD3341	10.68	51.09	LCD6151	13.55	44.02	LCD8154	35.08	120.73
LCD4032	11.96	59.65	LCD6212	7.07	35.86	LCD8156	42.52	135.87
LCD4036	10.47	50.29	LCD6215	13.57	33.15	LCD8158	138.47	262.28
LCD4040	7.83	44.25	LCD6300	13.40	37.74	LCD8160	38.79	130.39
LCD4041	9.03	52.83	LCD6301	11.30	31.35	LCD8162	35.82	113.94
LCD4055	9.73	57.92	LCD6302	10.14	43.31	LCD8164	38.39	112.40
			LCD6304	5.73	31.78	LCD8166	46.84	156.96
			LCD6305	6.43	32.75	LCD8168	39.72	117.32
			LCD6307	4.35	19.33	LCD8170	39.19	93.06
			LCD6309	7.14	32.82	LCD8172	55.25	163.12
			LCD6310	4.35	21.01	LCD8174	26.95	85.82
			LCD6311	5.73	29.93	LCD8176	56.66	174.85

Species Key: RO-Red Oak, WO-White Oak, CH-Cherry, MG-Mahogany, WA-Walnut, BI-Birch, AL-Alder, PI-White Pine, CY-Cypress, HMA-Hard Maple, MA-Soft Maple & POP-Poplar

PL9

PRICE LIST

LCD'S (con't) · CLASSICAL ORDERS

PRODUCT	POP	RESIN	PRODUCT	POP	RESIN	THE CLASSICAL ORDERS			
LCD8178	19.93	54.72	LCD8534	27.37	145.00	* Made-to-Order per job			
LCD8180	33.40	90.05	LCD8535	15.46	92.89	* Poplar priced per LF, random length long.			
LCD8182	47.11	159.26	LCD8538	12.34	73.41	* LCD's comprised of custom production and In-Stock profiles.			
LCD8184	27.10	86.22	LCD8539	6.81	43.93	* Minimum Orders Allowed: LCD's 100LF; Profiles individually 200LF			
LCD8186	29.93	81.46	LCD8540	9.68	49.98	* Specifying lengths subject to a 20-30% upcharge.			
LCD8188	67.53	200.60	LCD8541	18.24	89.79	* Resin quotes based on specification and may be subject to mold charges.			
LCD8190	77.14	211.01	LCD8542	13.67	65.35				
LCD8192	41.63	148.40	LCD8543	16.20	77.74				
LCD8194	35.11	137.63	LCD8544	15.65	81.87				
LCD8196	40.94	128.63	LCD8548	41.62	206.70				
LCD8209	48.69	184.18	LCD8550	9.64	52.91				
LCD8215	46.59	183.58	LCD8552	11.95	66.76				
LCD8224	37.21	136.89	LCD8554	7.44	39.65				
LCD8227	61.10	191.05	LCD8560	76.86	253.83				
LCD8230	27.31	131.38	LCD8561	218.47	295.75				
LCD8251	22.84	135.11	LCD8562	38.87	123.26				
LCD8252	30.54	85.09	LCD8564	61.47	192.76				
LCD8360	38.72	224.62	LCD8566	33.21	120.96				
LCD8369	65.53	293.32	LCD8567	31.01	108.88				
LCD8378	32.58	183.61	LCD8568	43.40	132.34				
LCD8387	41.02	229.53	LCD8570	42.86	121.17				
LCD8396	31.13	173.47	LCD8571	32.00	118.62				
LCD8405	38.65	219.69	LCD8572	29.47	84.74				
LCD8408	54.10	229.20	LCD8573	33.85	113.79				
LCD8500	16.16	58.39	LCD8574	26.20	97.88				
LCD8501	16.36	60.87	LCD8575	40.92	125.54				
LCD8502	18.14	76.95	LCD8577	27.77	76.92				
LCD8503	27.08	92.54	LCD8578	48.62	180.60				
LCD8504	15.55	51.41	LCD8579	25.73	90.28				
LCD8505	6.80	39.36	LCD8581	44.61	129.47				
LCD8506	6.56	31.77	LCD8582	33.40	118.70				
LCD8507	6.56	34.75	LCD8583	34.31	116.05				
LCD8508	32.34	98.76	LCD8585	220.93	307.46				
LCD8509	6.46	34.68	LCD8586	59.76	166.88				
LCD8510	6.56	41.45	LCD8587	30.53	89.28				
LCD8511	6.13	41.86	LCD8588	39.22	115.82				
LCD8512	6.74	39.13	LCD8590	42.47	126.80				
LCD8513	6.05	29.21	LCD8591	58.45	189.09				
LCD8514	7.54	42.96	LCD8592	27.81	121.50				
LCD8515	9.69	61.60	LCD8594	30.83	138.44				
LCD8516	9.54	49.25	LCD8595	34.32	168.63				
LCD8520	63.98	254.80	LCD8596	30.41	86.12				
LCD8521	208.45	299.37	LCD8598	42.96	167.54				
LCD8522	17.64	79.04	LCD8599	20.36	104.51				
LCD8523	17.78	107.27	LCD8600	30.54	85.09				
LCD8524	32.38	189.34	LCD8601	44.64	138.51				
LCD8525	22.16	133.19	LCD8603	29.66	112.53				
LCD8526	13.32	77.20	LCD8604	36.89	109.94				
LCD8527	21.87	121.42	LCD8605	31.66	92.20				
LCD8528	20.52	124.13	LCD8606	30.05	138.55				
LCD8529	22.36	113.22	LCD8607	73.64	226.81				
LCD8530	12.50	77.89	LCD8609	53.83	180.83				
LCD8531	11.02	71.79	LCD8610	17.38	77.35				
LCD8532	12.66	72.25	LCD8611	24.45	91.83				
LCD8533	22.59	138.50							
						PRODUCT	POP	POP	POP
						TOT LF ORD:	100-200	201-500	501-1000
						LCD8300	39.57	36.00	33.59
						T901		3.24	2.89
						T902		8.56	7.64
						DS1X4		3.03	3.03
						T903		6.17	5.51
						DS1X10		7.56	7.56
						T904		4.41	3.93
						DS1X4		3.03	3.03
						LCD8303	60.76	57.51	55.32
						T901		3.24	2.89
						T902		8.56	7.64
						DS1X4		3.03	3.03
						CM8823		10.52	10.52
						FR8969		23.60	23.60
						T904		4.41	3.93
						T905		4.16	3.71
						LCD8306	49.96	48.60	47.68
						CM8820		7.83	7.83
						T902		8.56	7.64
						DS1X4		3.03	3.03
						CM8823		10.52	10.52
						DS1X10		7.56	7.56
						BB155		2.35	2.35
						PM8560		5.70	5.70
						DS1X4		3.03	3.03
						LCD8310	47.16	42.79	39.84
						T1001		6.27	5.60
						T1002		9.30	8.30
						DS1X4		3.03	3.03
						T1003		6.77	6.04
						DS1X12		9.35	9.35
						T1004		5.04	4.49
						DS1X4		3.03	3.03
						LCD8313	65.52	62.23	60.02
						T1001		6.27	5.60
						T1002		9.30	8.30
						DS1X4		3.03	3.03
						CM8823		10.52	10.52
						FR8969		23.60	23.60
						T1004		5.04	4.49
						DS1X6		4.48	4.48

PL10

Species In-Stock for custom mouldings: RO, WO, CH, MG, WA, BI, Clear & Knotty AL, PI, CY, HMA, MA & POP. Exotic species avail. upon request. Please call with profiles, species & footages for a quote.

PRICE LIST

CLASSICAL ORDERS

PRODUCT	POP	POP	POP	PRODUCT	POP	POP	POP	PRODUCT	POP	POP	POP
TOT LF ORD:	100-200	201-500	501-1000	TOT LF ORD:	100-200	201-500	501-1000	TOT LF ORD:	100-200	201-500	501-1000
LCD8316	55.81	54.33	53.33	LCD8333	153.05	133.42	122.30	LCD8346	174.21	155.70	143.23
CM8810		11.38	11.38	CM8860		7.55	7.55	CM8820		7.83	7.83
T1002		9.30	8.30	C902		3.70	3.30	C1002		3.04	2.72
DS1X4		3.03	3.03	C903		3.52	3.14	C1003		4.41	3.93
CM8823		10.52	10.52	CO723		1.58	1.58	CO723		1.58	1.58
DS1X10		7.56	7.56	MOD902 (qty 2)		66.42	60.38	MOD1002 (qty 2)		80.50	71.84
BB155		2.35	2.35	C904		2.92	2.61	DS1X2		2.30	2.30
PM8560		5.70	5.70	C909		5.26	4.70	C1008		5.26	4.70
DS1X6		4.48	4.48	C910		12.50	11.16	C1009		14.64	13.07
LCD8320	65.80	59.26	54.85	DS1X10		7.56	7.56	FR8969		23.60	23.60
T1201		6.11	5.46	C911		5.80	5.17	C1006		3.56	3.18
T1202		18.26	16.30	C912		13.57	12.11	C1007		4.48	4.00
DS1X6		4.48	4.48	DS1X4		3.03	3.03	DS1X6		4.48	4.48
T1203		7.50	6.69	LCD8336	156.30	135.74	123.99	LCD8350	94.64	84.35	77.41
DS1X12		9.35	9.35	CM8820		7.83	7.83	C1201		3.52	3.14
T1204		9.07	8.09	C902		3.70	3.30	C1202		3.81	3.40
DS1X6		4.48	4.48	C903		3.52	3.14	DS1X6		4.48	4.48
LCD8323	93.53	87.48	83.41	CO723		1.58	1.58	CO723		1.58	1.58
T1201		6.11	5.46	MOD902 (qty 2)		66.42	60.38	MOD1201 (qty 2)		29.67	26.48
T1202		18.26	16.30	C904		2.92	2.61	C1203		3.24	2.90
DS1X6		4.48	4.48	C909		5.26	4.70	C1204		2.68	2.39
CM8823		10.52	10.52	C910		12.50	11.16	C1205		10.82	9.66
DS1X2		2.30	2.30	DS1X2		2.30	2.30	DS1X12		9.35	9.35
DS1X4		3.03	3.03	C913		18.42	16.44	C1206		3.10	2.77
PM8560		5.70	5.70	C907		2.70	2.41	C1207		7.60	6.79
FR8969		23.60	23.60	C908		4.09	3.65	DS1X6		4.48	4.48
T1204		9.07	8.09	DS1X6		4.48	4.48	LCD8353	201.42	177.46	161.32
T1205		4.41	3.93	LCD8340	85.19	75.66	69.23	CM8860		7.55	7.55
LCD8326	71.75	68.84	66.87	C1001		3.30	2.94	C1202		3.81	3.40
CM8810		11.38	11.38	C1002		3.04	2.72	DS1X6		4.48	4.48
T1202		18.26	16.30	C1003		4.41	3.93	CO723		1.58	1.58
DS1X6		4.48	4.48	CO723		1.58	1.58	MOD1202 (qty 2)		100.58	89.76
CM8823		10.52	10.52	MOD1001 (qty 2)		28.35	25.30	C1203		3.24	2.90
DS1X2		2.30	2.30	DS1X2		2.30	2.30	C1208		5.26	4.70
DS1X12		9.35	9.35	C1004		3.52	3.14	C1209		14.34	12.80
BB155		2.35	2.35	C1005		9.07	8.09	DS1X12		9.35	9.35
PM8560		5.70	5.70	DS1X10		7.56	7.56	C1210		9.07	8.09
DS1X6		4.48	4.48	C1006		3.56	3.18	C1211		13.71	12.24
LCD8330	79.67	74.60	71.18	C1007		4.48	4.00	DS1X6		4.48	4.48
C901		3.18	2.84	DS1X6		4.48	4.48	LCD8356	206.55	184.52	169.68
C902		3.70	3.30	LCD8343	172.65	152.11	138.27	CM8820		7.83	7.83
C903		3.52	3.14	CM8860		7.55	7.55	DS1X2		2.30	2.30
CO723		1.58	1.58	C1002		3.04	2.72	C1202		3.81	3.40
MOD901 (qty 2)		30.68	30.68	C1003		4.41	3.93	DS1X6		4.48	4.48
C904		2.92	2.61	CO723		1.58	1.58	CO723		1.58	1.58
C905		2.63	2.35	MOD1002 (qty 2)		80.50	71.84	MOD1202 (qty 2)		100.58	89.76
C906		9.00	8.03	DS1X2		2.30	2.30	C1203		3.24	2.90
DS1X10		7.56	7.56	C1008		5.26	4.70	C1208		5.26	4.70
C907		2.70	2.41	C1009		14.64	13.07	DS1X2		2.30	2.30
C908		4.09	3.65	DS1X10		7.56	7.56	C1209		14.34	12.80
DS1X4		3.03	3.03	C1010		5.88	5.24	FR8969		23.60	23.60
				C1011		14.90	13.30	C1206		3.10	2.77
				DS1X6		4.48	4.48	C1207		7.60	6.79
								DS1X6		4.48	4.48

Species In-Stock for custom mouldings: RO, WO, CH, MG, WA, BI, Clear & Knotty AL, PI, CY, HMA, MA & POP.
Exotic species avail. upon request. Please call with profiles, species & footages for a quote.

PL11

PRICE LIST

WOODCARVINGS · 7000 SERIES

* All half products (H) in the 7000 series are sold in pairs							PRODUCT	AL	CH	MA	RO	WA	WO
CLM7000		1167.22	1106.93	964.58	1512.94		CRV7110	57.02	54.02	50.88			
* CLM7000H		1204.71	1195.21	1027.21	1567.54		CRV7114	8.51	9.49	8.11	7.67		
CLM7002		622.95	590.74	512.44	1181.48		CRV7116	149.05	146.05	124.58	109.11		
* CLM7002H		661.68	625.99	545.90	1245.60		CRV7118	120.92	147.02	109.86	95.20		
CLM7004		575.15	500.13		754.04	575.15	CRV7120	163.34	193.15	165.39	143.71		
* CLM7004H		625.85	550.83		808.64	625.85	CRV7122	655.33	781.96	622.64	590.66		
CLM7006		753.71	655.40		982.41	724.72	CRV7126	96.39	95.85	82.07	87.77		
* CLM7006H		804.41	706.10		1042.74	773.47	CRV7130	89.66	84.14	74.17	63.87		
CLM7008		637.97	555.87	460.68	807.23		FT7000		84.36	68.47		104.68	89.01
* CLM7008H		692.05	608.65	512.09	861.83		FT7002		101.65	77.49		118.45	100.73
CLM7010		670.07	533.56	470.70	815.75		FT7004		32.60	28.61	29.41	45.22	
* CLM7010H		750.45	614.69	550.93	904.20		FT7006		118.52	117.67	111.62	174.92	
CLM7012	202.80	222.11	199.48	176.60			FT7008	87.77	108.39	88.76	82.48		
CLM7014		696.72	554.76	499.41			* FT7008H	119.11	128.54	51.15	101.59		
* CLM7014H		741.95	607.54	552.06			FT7010	80.72	91.46	82.18	76.35		
CLM7016	337.80	355.58	328.92	323.28			* FT7010H	99.57	110.96	99.03	91.08		
CRV7000		520.60	394.37		760.57	494.38	MLD7000		512.53	445.68	401.11	623.95	
CRV7002		268.62	221.88		434.47	282.41	MLD7002		353.60	312.00	277.69	431.97	
CRV7004		167.88	147.25		282.41	187.49	MLD7004		283.86	249.60	222.15	345.57	
CRV7006		450.86	327.40		631.12	425.43	MLD7006	97.06	106.31	93.52		133.59	106.31
CRV7008		208.43	169.92		332.71	220.89	MLD7008		80.67	70.94		98.21	80.67
CRV7010		134.87	115.91		227.04	150.67	MLD7010		437.62	380.54		515.57	437.62
CRV7012		553.71	509.18		1018.35	661.94	MLD7012		275.97	239.98		325.13	275.97
CRV7014		388.16	354.14		682.99	443.95	MLD7014		386.37	335.97	302.37	470.36	
CRV7016		233.94	218.68		428.18	278.31	MLD7016		315.40	274.26	246.84	345.04	
CRV7018		447.46	410.15		791.00	514.16	MLD7018		402.13	349.68	314.71	489.56	
CRV7020		299.39	296.49		571.79	385.44	MLD7020		295.69	260.00	231.41	385.68	
CRV7022		889.89	836.47	768.88	1672.95		MLD7022	222.35	243.53	211.76			
CRV7024		173.31	167.85		328.65	218.21	MLD7024	316.02	346.11	300.97			
CRV7026		787.44	710.89	698.71	1086.86		MLD7026	306.25	335.42	291.67			
CRV7028		406.20	346.46	298.72	668.16		MLD7028		575.06	500.05			
CRV7030		463.73	455.81	435.67	614.80		MLD7030		563.67	490.15			
CRV7032		206.99	179.34	192.00	285.32		MLD7032		459.77	397.09			456.66
CRV7034		115.71	113.40	115.43	169.81		MLD7034		467.52	403.39			463.89
CRV7036		625.59	537.94	528.73	837.01		MLD7036		440.61	383.14			440.61
CRV7038		455.33	422.93	398.87	655.70		MLD7038		537.29	467.20	420.48		
CRV7040		267.96	247.36	246.44	375.47		MLD7040		525.90	457.30	411.57		
CRV7042		228.03	192.19		287.67	290.23	MLD7042		477.65	415.34	373.81		
CRV7044		109.12	99.61		149.20	141.85	MLD7044		484.88	421.63	379.47		
CRV7046		237.30	174.72		245.18	227.14	MLD7046		461.60	401.39	361.25		
CRV7048		130.48	115.52		164.89	150.17	MLD7048		486.93	423.42	381.07		
CRV7052		68.77	66.41		96.74	86.32	MLD7050		475.54	413.51	372.16		
CRV7056		27.47	22.58		34.52	29.36	MLD7052		465.06	404.40	363.96		
CRV7060		30.56	30.51		46.62	39.66	MLD7054		472.29	410.69	369.62		
CRV7064		52.55	52.29		79.97	67.99	MLD7056		449.01	390.45	351.40		
CRV7068		283.21	256.73		405.12	333.75	MLD7058		520.50	452.61	407.35		
CRV7072		323.79	296.18		459.19	385.02	MLD7060		509.11	442.71	398.44		
CRV7084		88.48	86.85	85.28	130.05		MLD7062		498.63	432.47	390.23		
CRV7086		60.27	61.44	60.78	93.92		MLD7064		505.87	438.13	395.89		
CRV7088		210.03	210.16	202.35	292.54		MLD7066		482.58	419.64	377.67		
CRV7090		172.73	171.14	165.48	238.23		MLD7068	203.04	222.37	193.37			
CRV7094		277.23	259.66	239.06	402.58		MLD7070		210.99	183.47			
CRV7098		236.96	222.20	210.18	332.61		MLD7072		248.76	216.31			248.76
CRV7100		101.42	96.85	89.46	145.03		MLD7074		256.00	222.60			256.00
CRV7102		58.59	58.45	57.58	89.35		MLD7076		232.71	202.36			232.71
CRV7106		35.25	34.38		52.57	45.82	RH7000	107.04	117.23	101.95			
							RH7002	143.22	156.86	136.38			

PL12

In-stock Alder, Cherry, Maple, Red Oak, Walnut and White Oak as shown. Mouldings priced as sets - see catalog. Please call for custom MLD resin quote on MLD7000-7076.

PRICE LIST

WOODCARVINGS · CHERRY, MAPLE, RED OAK AND RUBBERWOOD

* All half products (H) in the 10000 series are sold in pairs

PRODUCT	AL	CH	MA	PO	RO	RU	PRODUCT	AL	CH	MA	PO	RO	RU
CLM10000	182.76	193.22	137.77	120.67	160.35	103.15	CLM10046	210.38	240.43	180.32	151.95	210.38	91.82
CLM10001	227.35	227.35	158.93	140.30	185.06	122.68	* CLM10046H	199.43	239.84	190.11	165.60	202.80	114.14
CLM10002	246.75	269.65	187.04	165.06	217.92	144.34	CLM10047	392.38	392.38	300.53	258.81	325.58	208.71
CLM10003	431.80	467.04	308.42	264.37	378.93	220.31	* CLM10047H	387.62	387.62	293.82	267.41	327.51	222.33
CLM10004	206.89	219.77	164.20	143.55	179.49	129.71	CLM10048	178.65	200.37	128.56	120.22	178.65	91.09
CLM10005	264.37	287.28	188.58	169.20	215.02	142.60	* CLM10048H	195.28	214.82	150.20	142.69	195.28	125.59
CLM10006	264.37	287.28	213.60	191.61	244.48	170.89	CLM10049	210.38	240.43	180.32	151.95	210.38	103.30
CLM10007	458.24	493.48	342.48	290.80	405.37	246.75	* CLM10049H	223.83	250.88	196.78	171.24	223.83	137.80
CLM10008	128.56	136.21	87.92	82.01	112.06	70.99	CLM10050	392.38	392.38	300.53	258.81	325.58	208.71
CLM10009	174.48	185.06	114.56	101.72	137.47	96.73	* CLM10050H	383.44	383.44	298.46	254.96	348.55	209.53
CLM10010	198.28	213.79	147.75	120.70	162.06	108.28	CLM10051	178.65	203.70	128.56	120.22	178.65	91.09
CLM10011	326.06	331.34	263.12	202.68	271.42	158.61	* CLM10051H	195.28	217.82	150.20	142.69	195.28	125.59
CLM10012	143.11	150.01	101.72	96.55	129.31	84.26	CLM10052	210.38	240.43	180.32	151.95	210.38	103.30
CLM10013	186.82	197.39	126.90	116.32	149.80	100.82	* CLM10052H	223.83	250.88	196.78	171.24	223.83	137.80
CLM10014	220.31	236.17	167.66	141.00	183.30	128.19	CLM10053	392.38	392.38	300.53	258.81	325.58	208.71
CLM10015	361.30	361.30	278.47	223.83	299.62	185.17	* CLM10053H	383.44	383.44	298.46	254.96	348.55	209.53
CLM10016	193.62	206.49	150.92	130.28	166.21	116.43	CLM10054	178.65	203.71	131.91	120.22	178.65	91.09
CLM10017	248.78	275.70	200.32	178.33	231.20	157.61	CLM10055	392.38	392.38	300.53	258.85	325.58	208.71
CLM10018	434.12	434.11	320.59	267.15	363.98	237.08	CLM10056	146.37	171.31	112.33	99.65	134.83	90.06
CLM10019	158.62	158.62	113.54	105.19	129.40	90.06	CLM10057	206.52	214.14	158.23	144.34	172.90	126.10
CLM10020	213.25	213.25	154.12	137.47	170.95	113.73	CLM10058	372.76	420.34	323.58	236.34	372.76	188.76
CLM10021	387.73	387.73	299.62	244.98	348.96	186.82	CLM10059	130.07	166.55	115.71	88.83	114.27	54.36
CLM10022	144.38	155.97	105.96	87.38	119.72	74.92	CLM10060	133.24	189.12	126.81	105.48	128.48	54.72
CLM10023	162.34	182.83	125.23	108.35	148.79	92.49	CLM10061	133.24	190.26	126.81	110.88	120.47	55.13
CLM10024	324.46	352.40	258.81	217.05	292.19	177.53	CLM10062	174.48	185.06	106.89	101.72	137.47	77.58
CLM10025	111.03	110.95	73.47	67.62	83.48	45.00	CLM10063	326.06	316.33	231.81	182.41	271.42	158.61
CLM10026	145.26	148.72	91.82	83.48	116.87	60.10	CLM10064	213.25	213.25	154.12	137.47	170.95	113.73
CLM10027	283.85	283.85	225.42	183.67	242.10	113.54	CLM10065	387.73	387.73	299.62	244.98	348.96	186.82
CLM10028	162.31	173.90	123.88	105.30	137.64	92.84	CLM10066	387.72	387.72	299.62	244.96	348.96	186.82
CLM10029	180.26	200.75	143.03	126.27	166.71	110.41	CLM10067	213.34	213.24	154.12	137.48	170.94	113.73
CLM10030	342.38	370.32	258.81	217.05	300.45	195.45	CLM10068	387.72	387.72	299.62	244.96	348.96	186.82
CLM10031	112.70	117.72	70.12	64.29	87.65	52.60	CLM10069	242.11	256.25	192.12	208.72	218.43	161.97
CLM10032	151.10	151.10	87.65	81.81	118.55	60.95	CLM10070	210.39	240.44	180.31	151.93	210.39	103.30
CLM10033	283.85	283.85	217.05	173.64	252.12	121.43	COR10042	119.81	150.66	109.51		128.38	75.57
CLM10034	226.80	239.68	184.11	163.47	199.40	149.62	COR10043	165.66	225.78	158.54		172.57	123.84
* CLM10034H	261.30	274.18	218.61	197.97	233.90	184.12	COR10044	394.33	571.53	409.39		472.95	249.53
CLM10035	246.76	269.53	208.71	192.01	231.70	169.15	COR10045	148.89	191.08	141.74		152.87	71.23
* CLM10035H	281.26	304.03	239.89	221.26	266.20	203.65	COR10046	36.97	41.42	32.04		38.08	22.30
CLM10036	484.20	484.20	367.33	342.29	417.43	267.15	COR10047	75.14	77.46	58.43	51.76	66.80	46.13
* CLM10036H	461.39	492.44	352.68	317.59	414.80	298.13	COR10048	63.45	66.80	46.66	43.34	53.42	39.81
CLM10037	213.53	226.41	170.83	150.19	186.13	136.34	COR10049	45.07	45.07	36.66	31.72	39.25	30.52
* CLM10037H	248.03	260.91	205.33	184.69	220.63	170.84	COR10050	36.74	36.74	29.96	28.35	34.98	24.55
CLM10038	242.10	256.25	192.12	173.49	218.43	155.87	COR10051	32.56	30.49	23.79	21.69	26.71	18.57
* CLM10038H	267.98	290.75	226.62	207.99	252.93	190.37							
CLM10039	434.11	444.66	320.59	283.85	367.02	250.36							
* CLM10039H	448.11	479.16	339.41	304.32	401.52	284.86							
CLM10040	213.53	226.41	170.83	150.19	186.13	136.34							
* CLM10040H	248.03	260.91	205.33	184.69	220.63	170.84							
CLM10041	242.10	256.25	192.12	173.49	218.43	155.87							
* CLM10041H	267.98	290.75	226.62	207.99	252.93	190.37							
CLM10042	434.11	444.66	320.59	283.85	367.02	250.36							
* CLM10042H	448.11	479.16	339.41	304.32	401.52	284.86							
CLM10043	213.53	226.41	170.83	150.19	186.13	136.34							
CLM10044	434.11	444.66	320.59	283.85	363.98	250.36							
CLM10045	178.65	203.70	128.56	120.22	178.65	80.98							
* CLM10045H	195.28	217.82	147.77	142.69	195.28	100.87							



In-stock Alder, Cherry, Maple, Poplar (PO), Red Oak, and Rubberwood (RU) as shown.

PL13

PRICE LIST

WOODCARVINGS · CHERRY, MAPLE, RED OAK AND RUBBERWOOD

PRODUCT	AL	CH	MA	PO	RO	RU	PRODUCT	AL	CH	MA	PO	RO	RU
COR10052	375.67	375.67	292.21	242.11	308.91	210.96	COR10112	63.45	66.80	46.67	43.33	53.43	31.69
COR10053	120.20	120.20	80.14	71.78	96.84	63.37	COR10113	45.08	45.08	36.66	32.33	39.24	26.93
COR10054	108.52	108.52	72.62	61.78	88.48	60.18	COR10114	36.74	36.74	29.96	28.37	34.98	24.55
COR10055	88.48	88.48	60.10	50.01	71.78	43.48	COR10115	32.57	30.47	23.79	21.70	26.71	18.57
COR10056	78.48	78.48	51.74	43.40	65.12	39.50	COR10116	21.62	19.95	14.19	13.28	15.86	11.94
COR10057	53.42	53.42	40.49	33.31	48.42	29.19	COR10117	375.67	375.67	292.21	242.11	308.91	210.96
COR10058	542.66	542.66	417.43	306.55	459.16		COR10118	120.20	120.20	80.14	71.78	96.84	63.37
COR10059	308.91	308.91	225.42	192.01	250.44		COR10119	108.52	108.52	72.62	61.78	88.48	60.18
COR10060	225.42	225.42	163.64	138.58	182.01		COR10120	88.48	88.48	60.10	50.01	71.78	43.48
COR10061	125.23	125.23	98.52	90.16	111.87		COR10121	78.48	78.48	51.74	43.40	65.12	39.50
COR10062	103.50	103.50	80.14	76.80	88.48		COR10122	53.42	53.42	40.49	33.31	48.42	29.19
COR10063	96.84	96.84	75.13	68.46	81.82		COR10123	29.21	33.31	22.56	20.88	25.03	18.98
COR10064	75.13	77.46	58.43	51.77	66.80	66.80	COR10124	542.66	542.66	417.43	306.55	459.16	
COR10065	63.45	66.80	46.66	43.34	53.42	31.69	COR10125	308.91	308.91	225.42	192.01	250.44	
COR10066	45.07	45.07	36.66	32.33	39.25	26.93	COR10126	225.42	225.42	163.64	138.58	182.01	
COR10067	36.74	36.74	29.96	28.35	34.98	24.55	COR10127	125.23	125.23	98.52	90.16	111.87	
COR10068	32.56	30.49	23.79	21.69	26.71	18.57	COR10128	103.50	103.50	80.14	76.80	88.48	
COR10069	21.63	19.96	14.19	13.27	15.86	11.94	COR10129	96.84	96.84	75.13	68.46	81.82	
COR10070	375.67	375.67	292.21	242.11	308.91	210.96	COR10130	225.42	225.42	163.64	138.58	182.01	
COR10071	120.20	120.20	80.14	71.78	96.84	63.37	COR10131	96.84	96.84	75.13	68.46	81.82	
COR10072	108.52	108.52	72.62	61.78	88.48	60.18	FT10000	33.39	33.39	24.98	23.79	29.21	22.56
COR10073	88.48	88.48	60.10	50.01	71.78	43.48	FT10001	55.12	55.12	41.76	39.25	47.59	35.83
COR10074	78.48	78.48	51.74	43.40	65.12	39.50	FT10002	35.07	35.07	24.72	22.56	30.06	19.21
COR10075	53.42	53.42	40.49	33.31	48.42	29.19	FT10003	35.07	35.07	24.72	22.56	30.06	19.21
COR10076	29.21	33.31	22.56	20.88	25.03	18.98	FT10004	38.42	38.42	29.21	27.54	33.39	26.55
COR10077	542.66	542.66	417.43	306.55	459.16		FT10005	57.62	57.62	43.00	36.74	50.10	33.18
COR10078	308.91	308.91	225.42	192.01	250.44		FT10006	49.25	49.25	41.64	35.07	43.40	32.61
COR10080	125.23	125.23	98.52	90.16	111.87		FT10007	38.42	38.42	30.89	27.54	33.39	25.62
COR10081	103.50	103.50	80.14	76.80	88.48		FT10008	17.53	17.53	12.43	12.05	16.26	11.27
COR10083	68.46	68.46	55.12	49.25	61.78		FT10009	40.58	40.58	28.38	26.79	30.54	29.19
COR10084	75.13	77.46	58.43	51.77	66.80	36.45	FT10010	16.70	13.09	11.19		11.19	8.94
COR10085	63.45	66.80	46.66	43.34	53.42	31.69	FT10011	30.89	30.89	23.22	21.95	24.63	18.11
COR10086	45.07	45.07	36.66	32.33	39.25	26.93	FT10012	42.17	42.17	29.96		32.13	20.45
COR10087	36.74	36.74	29.96	28.35	34.98	24.55	FT10013	36.74	36.74	29.21	28.29	33.39	25.03
COR10088	32.56	30.49	23.79	21.69	26.71	18.57	FT10014	56.75	60.10	49.25	40.89	53.42	33.39
COR10089	375.67	375.67	292.21	242.11	308.91		FT10015	33.39	33.39	28.29	27.54	30.06	23.28
COR10090	120.20	120.20	80.14	71.78	96.84		FT10016	44.33	47.50	36.40		40.46	29.14
COR10091	108.52	108.52	72.62	61.78	88.48	53.53	FT10017	57.91	67.42	47.50		53.93	34.52
COR10092	88.48	88.48	60.10	50.01	71.78	39.62	FT10018	86.46	90.41	71.38		79.31	59.74
COR10093	78.48	78.48	51.74	43.40	65.12	39.50	FT10019	38.42	38.42	26.71	25.46	32.56	22.56
COR10094	53.42	53.42	40.49	33.31	48.42	29.19	FT10020	51.77	51.77	41.76	36.74	47.59	30.06
COR10095	542.66	542.66	417.43	306.55	459.16		FT10021	38.42	38.42	26.71	25.46	32.56	22.56
COR10096	308.91	308.91	225.42	192.01	250.44		FT10022	52.55	52.55	42.54	37.52	48.39	30.86
COR10097	225.42	225.42	163.64	138.58	182.01		FT10023	31.72	31.72	23.36	20.88	26.74	21.23
COR10098	125.23	125.23	98.52	90.16	111.87		FT10024	24.98	24.98	17.25		22.29	14.94
COR10099	103.50	103.50	80.14	76.80	88.48		FT10025		48.42	43.40	40.06	44.24	
COR10100	96.84	96.84	75.13	68.46	81.82		FT10026		50.10	45.07	41.76	45.92	
COR10101	501.24	467.93	364.83	329.93	418.76		FT10027		37.55	24.63	25.03	31.72	
COR10102	151.93	151.93	111.87	95.17	129.41		FT10028		43.40	38.42	38.42	40.06	
COR10103	99.15	99.15	78.53	69.79	87.24		FT10029		21.63	19.03	16.70	20.04	
COR10104	79.31	79.31	63.45	58.69	71.38		FT10030		22.56	20.04	18.38	20.88	
COR10105	55.52	55.52	46.00	45.40	50.38		FT10031		22.56	20.04	18.38	20.88	
COR10106	388.62	428.27	325.17		364.83		FT10032		22.56	20.04	18.38	20.88	
COR10107	217.31	236.34	180.83		199.86		FT10033		23.39	14.19	12.14	15.86	
COR10108	136.41	150.69	115.79		125.31		FT10034		21.63	19.03	16.70	20.04	
COR10109	58.69	65.03	50.76		55.52		FT10035		22.56	20.04	18.38	20.88	
COR10110	36.48	41.24	27.60		31.72		FT10036		22.56	20.04	18.38	20.88	
COR10111	75.14	77.46	58.43	51.76	66.80	36.45	FT10037		22.56	20.04	18.38	20.88	

FLEX MOULDING ORDER FORM

Submit Form With Order

DATE: _____

P.O. NO.: _____

PURCHASING AGENT: _____

ORDERED BY: _____

COMPANY: _____

ADDRESS: _____

CITY: _____ STATE: _____ ZIP: _____

TELE: _____ FAX: _____

SHIP TO: _____

COMPANY: _____

ADDRESS: _____

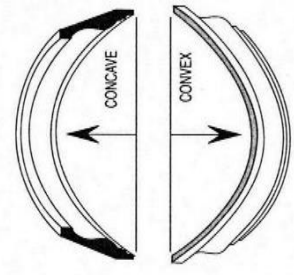
CITY: _____ STATE: _____ ZIP: _____

TELE: _____ FAX: _____

STRAIGHT PARTS - BASE, CHAIR RAIL, S4S & OTHERS

PART NUMBER	QUANTITY	LENGTH OR UNITS

CHECK ONE: STANDARD S4S MACHINABLE S4S



Length = See instructions above

HALF CIRCLES

PART NUMBER	QUANTITY	LENGTH	RADIUS

EYEBROW

PART NUMBER	QUANTITY	LENGTH	H x W

ELLIPTICAL CURVES

PART NUMBER	QUANTITY	LENGTH	TEMPLATE NO.

CROWN

PART NUMBER	QUANTITY	LENGTH	CONCAVE (inside) RADIUS	CONVEX (outside) RADIUS

NOTE: Every pattern has limitations on how tight a radius it can be formed into. If your order includes a part that has to be in a tight radius, check with our office before writing the order.

PRICE LIST

POLICY AND SERVICES

DESIGN SERVICES I

We provide a wide range of millwork design services (preliminary sketches, CAD elevations and plans, and construction details) for residential and commercial projects, ranging from 25,000 sq. ft. interior projects to single rooms. Our highly skilled staff has more than 100 years of combined experience in the specification of traditional millwork. We will work with you, your architect, or your builder from initial concepts and build-ups to whole house millwork designs and estimating. We take pride in our ability to take your ideas and transform them into the interior of your dreams. Contact one of our Design Professionals to discuss your project at 1.800.558.0119 or Designs@WhiteRiver.com. At this phase, we will help you evaluate what level of service you require. This initial consultation is free.

Level 1: Moulding and Carving Specification

We will give product suggestions via phone, fax, or email. These suggestions may be accompanied by hand sketches or simple CAD drawings. This level may involve selecting crown, base, casing, chairrail, panel moulding, etc. It usually involves an hour of design time or less. There is no charge for Level 1 Design Services.

Level 2: Standard Design Assistance

We will work with you to develop your project. It may be an elevation, a piece of furniture, a single room, or an entire building. All work at this stage is billed at an hourly rate of \$75. Design time is estimated based on project scope and must be pre-paid. Standard Design Assistance involves several stages:

1. Preliminary design

We will produce initial design ideas, working to present a visual picture of our millwork and moulding concepts. This may include sketches over photos, rough elevations, and other CAD drawings as needed.

2. Design Refinement

Once you are satisfied with the initial concepts, we will begin to create the technical CAD drawings. Standard technical drawings include dimensioned elevations, reflected ceiling plans, and detailed sections

3. Takeoffs and Pricing

When the design is completed, we can provide a material takeoff and price estimate for all White River millwork and carvings within the project.

Level 3: On-Site Consultation

If desired, one of our Designers can visit your project for an On-Site Consultation. Our Designer will take photos, make measurements, and discuss initial concepts and ideas with you. This meeting can cover 1/2 to 2 days, depending on the scope moulding proportions and scale relative to the customer's interior space is evaluated. The designer then takes this information of the job and services needed. All site visit time is billed at \$75/hour plus expenses, including airfare, travel time, lodging, and meals. The average investment for On-Site Consultation is \$2,000 to \$3,000. After the initial meeting, Level 3 design will follow similar steps to Level 2 (Preliminary Design, Design Refinement, Takeoffs and Pricing).

POLICY FOR CUSTOM QUOTES I

Quotes are based on information given.

The customer must give us the species needed, footage or pieces required, and the product they need.

Example: 100' CR67 Mahogany

* Any change or reduction in overall quantities, or lengths specified, will change the price of the quote. For example, if we quote 100' and the customer sends in a P.O. for only 50' of moulding, it will need to be re-quoted. Or if we quote random lengths and the customer orders specified lengths, such as 10-10' pieces, that will also be subject to a re-quote.

* Quotes are always based on Random Long Lengths (RLL), unless specified lengths are requested. If lengths are specified, we must know what lengths specifically!

* To honor pricing of original quote, P.O.'s must be for at least the quantity of items originally quoted.

* Quotes reflect price per foot or per piece and will also show machine set-up charges.

Do not take items that were quoted together and send in separate P.O.'s for them.

* Quotes are assumed to be for one PO, so all items ordered must be listed on a single PO. For example, requesting a quote for 10 items, but only ordering 2 is subject to a re-quote.

Pricing is always NET pricing, unless otherwise noted.

* Do not take an additional discount off quoted price, unless specifically instructed by your dealer.

PL16

Typical lead times for custom mouldings are 2-5 weeks.

- * Specified Lengths (SL) can add 1-2 additional weeks to the lead time, as we may have to bring in lengths not currently in inventory. On smaller orders, we must work with lengths we have on hand.

Custom moulding orders are subject up to a 20% overrun that will be charged to the customer.

- * If we do not have specified lengths in stock to fill an order, we will pull longer lengths in inventory to fill the order. The customer's account will be charged for the overage up to 10% for random lengths or 20% for specified lengths. White River tries to keep overages to a minimum, but they do happen.

There is an 8' minimum for custom lineal runs.

- * Please keep in mind that pricing is based on footage; the more footage requested, the better the price.

Always order enough product to complete the job.

- * If additional mouldings or carvings are needed, the original pricing cannot be honored. It will be treated as a new quote and priced accordingly by footage needed. When figuring lineal footage needed, use actual lineal footage plus a 20-30% waste factor to match repeats and to cut to installed lengths. Cutting loss varies and must be considered by the customer.

When placing a P.O. for custom work, simply return a copy of the quote we provided with your P.O. Custom knife and/or custom die charges will apply when producing new, non-stock moulding designs. White River produces its own knives in-house. We can enlarge a profile or do restoration or renovation work for your jobs.

SPECIFIED-LENGTHS POLICY FOR MON REALE®, EMBOSSED & TRADITIONAL MOULDINGS I

White River hardwood mouldings are produced from lumber that is 65% 12'-16' lengths, allowing us to produce stock mouldings in long lengths (overall 3'-16'). Our hardwood mouldings are precision machined with Weinig Moulders using Weinig Knife Tooling.

There is an upcharge for specified lengths. The customer also pays for additional footage (overpull) needed to pull specified lengths. Upcharges by category are shown per sections. It is not our policy to run specified lengths on stock items when there is standing inventory. Customer will be notified if a specified length cannot be pulled from in-stock mouldings, per the policy, so that they can match their orders to current available lengths.

15' & 16' Policy for Mon Reale®, Ornementally Embossed™ & Traditional Mouldings

Because 15' - 16' lengths are considered premium, there is a 30% upcharge. These will be keyed in under a separate line item. Specified lengths are subject to that length being available in current inventory. We do not set up and run specified lengths when we have standing inventory. Processing specified-length orders requires opening bundles to pull those lengths. If lengths are not available, we pull the longer lengths required to fill the order. The moulding is then tallied and bundled for shipping. The extra moulding that has been pulled has to be retallied, bundled and restocked. This is a time-consuming process. Our standard 30% upcharge is enough to cover the labor to reasonably pull the desired lengths, not to cover the additional footage needed to get the order. A reasonable attempt will be made to pull the order to desired lengths, but overages of an additional 10-20% may occur. If extra footage exceeds 20%, we will call for approval.

Tallying Policy

This industry-standard policy will allow customers to correctly receive the stock that is pulled to meet their orders. All mouldings are tallied to the nearest foot. For example, if the actual length is 11'5", the tallied length is 11'. If the actual length is 11'7", the tallied length is 12'. If the actual length is 11'6", the tallied length is 11'.

FedEx Orders

Specified lengths on FedEx orders are subject to an upcharge of 20% plus additional LF needed to pull the order. Many orders with FedEx piece counts are exceeding the cost to ship LTL. To FedEx five bundles can be the same as a \$100 LTL charge. Many of the truck lines we use to ship LTL have shipping schedules within a day of regular FedEx ground.

PRICE LIST

POLICY AND SERVICES

Examples:

The following examples would be subject to specified-length charges: 3 pc 8' CA37POP. The following example is NOT subject to specified-length charges: 24' CA37POP, ship FedEx. This order will be pulled random length with no upcharge. Normally, we will ship 6' - 8' lengths to fill this order.

PROS OF RANDOM LENGTHS

1. Shortens lead time
2. Available from current inventory
3. Long lengths
4. Best price (save 20-30%)

CONS OF SPECIFIED LENGTHS

1. Will delay shipment of your order
2. Length may not be available from current inventory
3. Unknown increased cost due to overpull

PROS OF SPECIFIED LENGTHS

1. On small jobs or repetitive length use application, it best fits the customer's needs the first time.

METALWOOD™ FINISHES FOR AUTHENTIC HAND-CARVED® WOODCARVINGS I

All potential orders are subject to a current quote based on job specifications and market conditions.

How to Order Metalwood™ Finished Mouldings and Woodcarvings:

1. Select the moulding(s) or woodcarving(s) to be finished. Note that all specified-length upcharges still apply to prefinished mouldings.
2. Select a finish (i.e. bronze, copper, etc.)
3. Call for a quote and if your net total for the Metalwood™ finishing is less than \$500, more items will need to be added to meet the minimum (or pay the minimum).
4. White River must have a signed Finish-Approval Agreement on file in order to begin the prefinishing process. A deposit may be required.
5. When orders are received, they should be opened carefully and inspected for transit damage. It is the buyer's responsibility to inspect the shipment immediately upon receipt and file appropriate freight claims with the carrier.

WARRANTIES

For complete touch-up and warranty information, please call your White River Sales Professional.

SHIPPING AND FREIGHT POLICY I

White River maintains an extensive inventory of all mouldings and hand-carved items shown in the catalogs and over 95% of orders received are able to ship complete within a reasonable timeframe. It is the objective of White River to ship orders under the following policy:

- * Prompt Shipment - Normal orders of a reasonable size that are complete with no back-orders will be shipped within 1-4 business days unless expedited air shipment is requested.
- * NOTE: Normal refers to orders for random length material from on-hand inventory.
- * White River must receive notification at the time an order is placed if there is a firm delivery date requirement.

Orders for Out-of-Stock Items

- * On normal orders that have items in production or need incoming hand-carvings, White River will require a 14 to 21 calendar day allowance (weekends included) to complete production, fill order, and ship order complete. The longer lead-time will apply to orders for the following products: Products produced from thicker stock, Mon Reale® mouldings, applied dentil or complex profiles that require multiple runs.

Specified Length, Non-Stock Items and Unusually Large Orders

- * For any order that contains a line item with one of the following characteristics, White River may require a 4-6 week allowance to fill this order and ship complete:
 - * Specified length not available from stock on hand
 - * Unusually large order not available from stock on hand
 - * Non-stock thickness, species, size or profile

* Note that specifying any length, especially 14' to 16', may significantly delay order shipment since those longer lengths only make up a fraction of the entire inventory. Due to the number of moulding profiles stocked by White River, at any given time numerous bins do not have 14' to 16' lengths and the customer must wait for a future production run. It is the policy of White River to run production only when stocking quantities are needed, NOT when specified lengths are not in current stock. Customers may consider modifying their order by switching to a length that is available in lieu of a potential 8-10 week lead-time, or occasionally longer, for the next production run. Please refer to the Specified Length Policy on page PL13 of the price list for more detail.

FOB Terms and Freight Policy

- * All orders are shipped FOB (Freight on Board) Origin, meaning that White River maintains responsibility for the product only until it is received by the carrier at the White River loading dock.
- * All orders are shipped either freight collect or freight prepaid and billed.
- * Please refer to the Return Policy on the back page of the Price List for more detail regarding damage in transit.

Fed Ex Shipments

- * Moulding orders may ship via FedEx with the following considerations:
 - * Fed Ex Ground pkgs must be 9' or shorter, product max length 8'8" bills at 9'
 - * Fed Ex Express pkgs must be 9'10" or shorter, product max length 9'6" bills at 10'
 - * Specifying lengths is subject to a surcharge per policy on PL13
 - * Depending upon the size of the order, the specified length upcharge may exceed the cost to ship via LTL
 - * An additional \$10.00 charge will apply to FedEx Residential Deliveries

Estimated Freight on Acknowledgement

- * White River utilizes state of the art computer-generated freight quotes. However, due to the number of variables that ultimately determine the freight costs, FREIGHT CHARGES ARE ESTIMATED until an order is shipped and the actual freight charges are calculated. Customers are responsible for final freight charges.

Orders Shipped Directly to Customers

- * To minimize the handling of material and freight charges, White River can drop-ship orders directly to the end user.
- * When White River receives an order that is to be shipped directly to a customer, the order will be entered as a ship complete order.
- * White River strives to ship all orders complete and in a timely manner. However, if an account requests shipment of a partial order and back order, the account will be responsible for the freight charges for both the partial shipment and the back order.

Residential Delivery Charges on LTL Orders – Residences, Home/Cabinet Businesses

- * The following charges will apply for Residential LTL Deliveries:
 - * Standard freight charges
 - * Call Charge \$45.00 - contact and set up delivery
 - * Residential Delivery Charge \$86.00
 - * Lift Gate Charge (Estimated based on the weight of the order)
- * Account is responsible for informing White River of a Residential Delivery.
- * When a PO is placed with White River for a Residential Delivery, a White River Territory Manager will contact Account to confirm Residential Delivery Charges.
- * White River must receive signed authorization for Residential and Lift Gate Estimated Charges.

NOTE: White River will estimate residential delivery freight as accurately as possible, however customers are responsible for all final charges.

International Shipments

- * All international shipments are required to have heat-treated pallets. Due to order packaging variations, these costs will be estimated at the time an order is received by White River:
 - * Moulding pallets at \$75.00 each
 - * Carving pallets at \$25.00 each
 - * Customs charges, if applicable

PRICE LIST

POLICY AND SERVICES

Customers are responsible for all final charges.

* White River will ship international orders only to business addresses that have appropriate loading docks.

* If a domestic order is needed by a drop-dead date for an export shipment, White River must be notified when the order is placed. White River will respond with a confirmation of shipping date based on product availability.

Return Policy I

1. Our terms of sale are F.O.B. our factory. The responsibility for damage in transit is the carrier's, whether it is visible or concealed damage.
2. Inspect your shipment immediately. Insist that visible damages be indicated on your copy of the freight bill.
3. Open boxes within 15 days of delivery, inspect for concealed damages and report any discrepancies. No adjustments will be made for discrepancies not reported within 15 days of receipt.
4. In case of damage, notify the delivering carrier immediately, requesting that inspection be made.
Place a phone call to the delivery carrier and confirm with a written report, holding a copy of the request for claim purposes.
5. We take every precaution to ensure safe arrival, but our responsibility ceases when the shipment is turned over to the carrier.
6. Claims of damages must be made by you to the carrier within 15 days of receipt of delivery.

Return Goods

1. Do not return any product without our authorization.
2. Call Customer Service and obtain a Return Goods Authorization (RGA#). We will fax you a shipping label that MUST be used.
3. Returned products must have packaging equal to original factory packaging (with adequate protective padding material and cardboard securely fastened.) White River WILL NOT be responsible for damage incurred because of insufficient packaging.
4. Special Order and custom-manufactured items cannot be returned.
5. Return merchandise will not be accepted by us from the carrier unless it is returned freight prepaid within 15 days of the return authorization date. Packages must be clearly marked with the RGA number.

We DO NOT guarantee safe delivery.

©White River Hardwoods-Woodworks, Inc. 1989-2018

Copyright claimed to the extent of all of its original and creative product designs, product numbers, photographs, drawings, text, the selection, coordination, arrangement, organization, placement, and ordering thereof, and other works herein reproduced. All rights reserved.