

CABLE·RAIL[®]

Make your railing view friendly with the original stainless steel cable infill for wood, metal, and composite-sleeved wood railing.



feeney[®]



Feeney[®] makes it easy

The CableRail cable infill system is slender, stylish, and easy to use. It's an ideal complement to any railing design, indoors or out.



View-friendly railing is easy!

STEP

1

Find your solution

Find CableRail solutions to fit most any railing material and design.

PGS. 8-10

STEP

2

Review stair options

Review the variety of options for using cable on stairs.

PG. 11

STEP

3

Select accessories and tools

Find all the items you'll need to create the perfect railing solution.

PG. 12-13

STEP

4

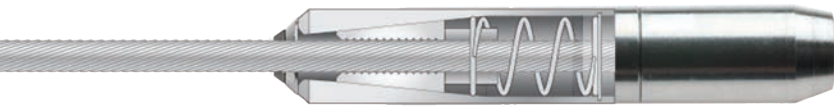
Easy installation

Simple step-by-step instructions make CableRail installation a breeze.

PG. 14

Easy to install

Our unique stainless steel fittings with special Quick-Connect® technology attach to the cable in the field without tools. One-way jaws automatically grab and lock-on after the cable is inserted, making assembly and installation fast and easy.



Celebrate your view

CableRail lets you celebrate the view with slender cables and hidden fittings that virtually disappear.

The railing shown is the Feeney DesignRail[®] aluminum railing system. For more information visit www.feeneyinc.com

Looking great for the long haul

Weather-tough 316-grade stainless steel cable and fittings are ultra-low maintenance and precision manufactured — a perfect design accent for wood, metal or composite-sleeved wood frames.

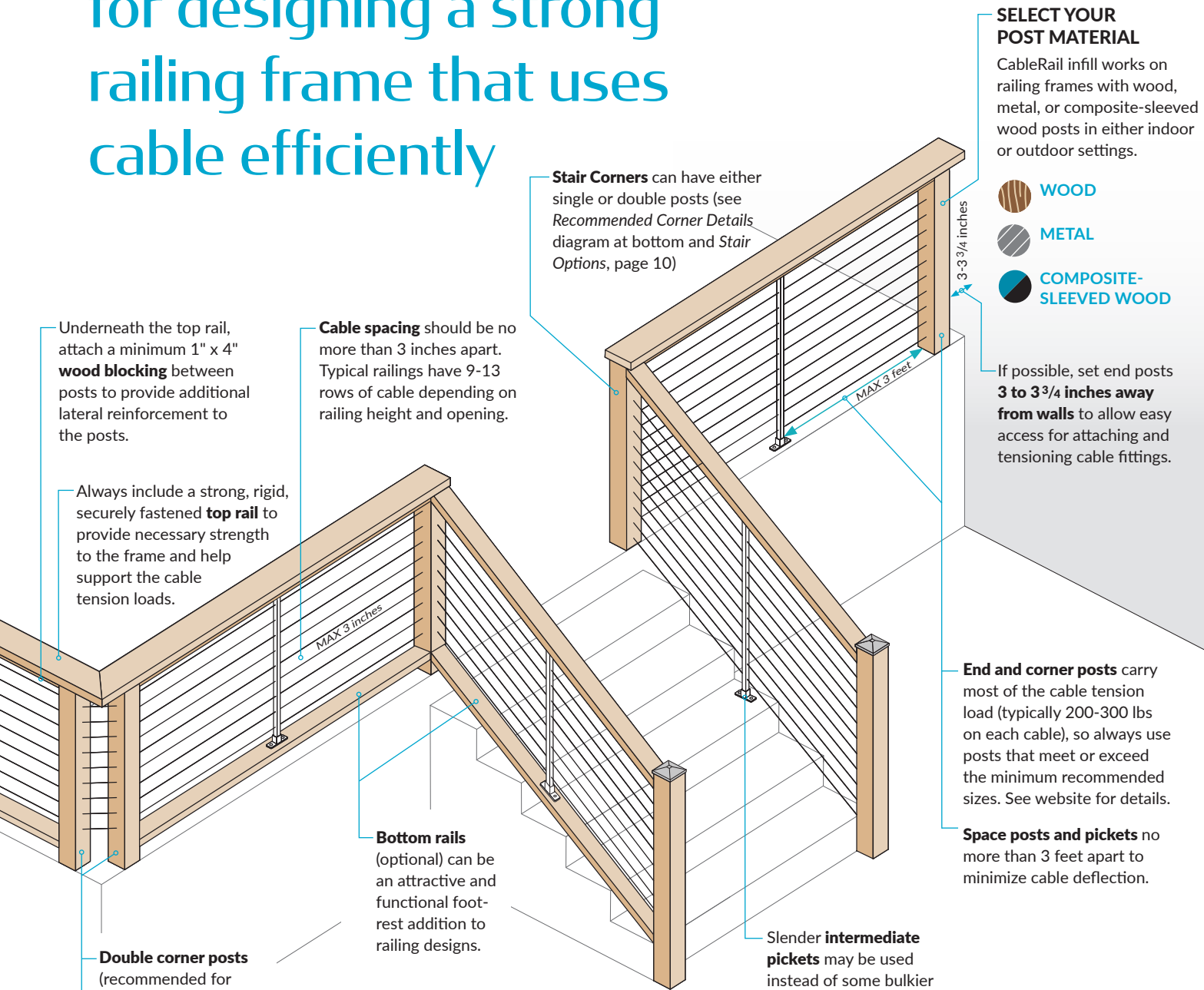
Minimizing environmental impacts



We make products that last, using mostly recycled materials. We also generate solar power at our California headquarters to offset over 95% of the facility's electrical usage. That's part of Feeney's on-going commitment to minimize environmental impacts.

To discuss how our products can help you earn LEED® credits for your upcoming projects, please give us a call at 1-800-888-2418.

Here are some tips for designing a strong railing frame that uses cable efficiently



SELECT YOUR POST MATERIAL
CableRail infill works on railing frames with wood, metal, or composite-sleeved wood posts in either indoor or outdoor settings.

-  **WOOD**
-  **METAL**
-  **COMPOSITE-SLEEVED WOOD**

If possible, set end posts **3 to 3 3/4 inches away from walls** to allow easy access for attaching and tensioning cable fittings.

End and corner posts carry most of the cable tension load (typically 200-300 lbs on each cable), so always use posts that meet or exceed the minimum recommended sizes. See website for details.

Space posts and pickets no more than 3 feet apart to minimize cable deflection.

Stair Corners can have either single or double posts (see *Recommended Corner Details* diagram at bottom and *Stair Options*, page 10)

Cable spacing should be no more than 3 inches apart. Typical railings have 9-13 rows of cable depending on railing height and opening.

Underneath the top rail, attach a minimum 1" x 4" **wood blocking** between posts to provide additional lateral reinforcement to the posts.

Always include a strong, rigid, securely fastened **top rail** to provide necessary strength to the frame and help support the cable tension loads.

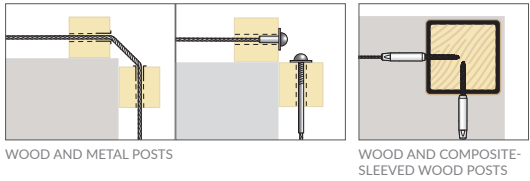
Bottom rails (optional) can be an attractive and functional foot-rest addition to railing designs.

Slender **intermediate pickets** may be used instead of some bulkier intermediate posts to achieve a more open railing design while maintaining proper cable spacing (see *Accessories*, page 11).

Double corner posts (recommended for wood and metal posts only) allow cables to either run continuously through a corner, requiring fewer fittings, or to easily terminate.

Single corner posts (recommended for composite-sleeved wood posts) are also an option and typically require the cables to terminate at the corner.

Recommended Corner Details



WOOD AND METAL POSTS WOOD AND COMPOSITE-SLEEVED WOOD POSTS

(see website for additional options)

Frame requirements vary depending on the type of frame materials used. Be sure to visit feeneyinc.com/cablerail for complete details or call us at 1-800-888-2418.

Find your solution


SOLUTION A

CableRail Kits

CableRail Kits are the most popular and cost effective solution for wood and metal railing frames and include everything needed to attach and tension a cable. They're designed for frames where there is access to drill through both end posts allowing the fittings to anchor to the outer faces of the posts.

Note: Kits are not recommended for composite sleeved wood posts

All fittings and cables are manufactured from high-quality 316-grade stainless steel for weather-tough durability, ultra-low maintenance, and lasting beauty.

 **Kits for Wood Posts**
(6300 series) have 7½-in
Threaded Terminal

 **Kits for Metal Posts**
(6200 series) have 4¼-in
Threaded Terminal

Kits for wood or metal posts

Our original CableRail system is an easy to install option for almost every project. It's packaged and ready to go in preset lengths and can be trimmed as needed in the field. Each kit includes the following:

Selected length of ½-in
diameter cable with
Threaded Terminal
pre-attached to one end



Quick-Connect®
Inset Fitting



Pair of flat washers
(Stainless for wood posts
and nylon for metal)



Snug-Grip®
Washer Nut

Conceal Kits for wood or metal posts

A low-profile CableRail option with slender end caps and special compact cable fittings that hide inside the end posts for a completely symmetrical look. Each kit includes the following:

½-in diameter cable with
Conceal Terminal
pre-attached to one end



Conceal Quick-Connect®
Fitting



Conceal
Receiver

Kits for oversized wood or metal posts

If you have oversized or irregular wood or metal posts that require a specific thread length, our **All-Thread Receiver (ATR) Kits** have a special receiver that accepts the length of all-thread rod you request (ATR Kits are special order). Each kit includes the following:

Pre-cut length of cable with
an ATR Receiver attached
to one end



Quick-Connect®
Inset Fitting







Pair of flat washers
(Stainless for wood posts
and nylon for metal)



¼-20RH
Washer Nut

¼ - 20RH All-Thread (sold separately)

LENGTH	6300 SERIES FOR WOOD POSTS 	6200 SERIES FOR METAL POSTS 	CONCEAL KITS FOR A LOW PROFILE 	ATR KITS FOR OVERSIZED POSTS 
5-ft	#6305-PKG	#6205-PKG	#105	#2005-ATR
10-ft	#6310-PKG	#6210-PKG	#110	#2010-ATR
15-ft	#6315-PKG	#6215-PKG	#115	#2015-ATR
20-ft	#6320-PKG	#6220-PKG	#120	#2020-ATR
25-ft	#6325-PKG	#6225-PKG	#125	#2025-ATR
30-ft	#6330-PKG	#6230-PKG	#130	#2030-ATR
35-ft	#6335-PKG	#6235-PKG	#135	#2035-ATR
40-ft	#6340-PKG	#6240-PKG	#140	#2040-ATR
45-ft	#6345-PKG	#6245-PKG	#145	#2045-ATR
50-ft	#6350-PKG	#6250-PKG	#150	#2050-ATR



Kits are also available in $\frac{3}{16}$ and $\frac{1}{4}$ -in diameter cable, as well as longer lengths. For more information, contact your local dealer or see our website at www.feeneyinc.com

QUICK-CONNECT® INSET FITTING

Features Quick-Connect® one-way locking jaws that allow the cable to easily slide through the fitting in one direction but automatically grab and lock-on after the cable is released. Just slip it on, pull the cable tight, cut off the excess, and finish with a decorative End Cap (sold separately).



Stainless or colored **End Caps** are available to cover, protect, and finish both ends

6300/6200 KIT

THREADED TERMINAL

Comes fastened to one end of the cable and attaches to an end post using a special Snug-Grip® Washer Nut. Simply spin the nut to adjust the final tension in the cable line and finish with a decorative End Cap (sold separately).



CONCEAL QUICK-CONNECT® FITTING

Based on the same easy to install technology as our original Quick-Connect® Inset fitting but with a lower profile on the post surface and a snap in conceal cap that's available in stainless steel or any of our DesignRail® colors.



Low-Profile Cap
Decorative stainless steel or colored end caps to match DesignRail® railings (see *Accessories*, page 13).

CONCEAL KIT

CONCEAL RECEIVER

Tension adjustment end that connects to the Conceal terminal. Use the Conceal Tool Kit to adjust the tension on the cables. Complete the look with a snap in Conceal cap.



QUICK-CONNECT® INSET FITTING



ALL-THREAD RECEIVER KIT

ALL-THREAD RECEIVER

This versatile receiver end allows you to connect to the required length of all-thread and then installs in the same way as the threaded terminal end of our original Kits for wood and metal.



SOLUTION B

Build Your Own

You can also create assemblies to fit your needs using cable and special CableRail Quick-Connect® fittings. This is a great option if your railing condition requires attaching one or both cable ends to a wall or inside face of a post or if using composite-sleeved wood posts. Each assembly must have at least one Tension Adjustment Fitting.

SELECT FITTINGS TO MATCH YOUR POST MATERIAL

-  Wood
-  Metal
-  Composite-Sleeved Wood

QUICK-CONNECT® LAG (#9905DL-PKG)

Fixed end fitting that screws into the face of a post or wall using the included hanger bolt with lag thread. Includes 2-in bolt for wood posts and 2-½-in bolt for wrapped or composite-sleeved wood posts.



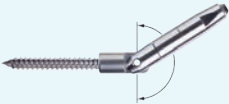
QUICK-CONNECT® LAG TENSIONER (#9910DL-PKG)

Lag fitting with a special swiveling body that allows ¼-in of take up for cable tensioning. Includes same hanger bolts as Lag.



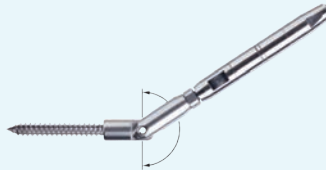
QUICK-CONNECT® PIVOT (#9915DL-PKG)

Fixed end fitting that screws into the face of a post or wall using the included hanger bolt with lag thread. 180° pivot range allows for angled stair terminations. Includes 2-in bolt for wood posts and 2-½-in bolt for wrapped or composite-sleeved wood posts.



QUICK-CONNECT® PIVOT TENSIONER (#9916DL-PKG)

Pivot fitting with a special swiveling body that allows ¼-in of take up for cable tensioning. Includes same hanger bolts as Pivot.



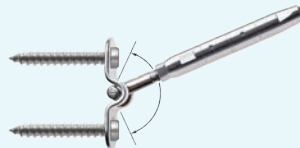
QUICK-CONNECT® SURFACE MOUNT (#9903W-PKG)

Fixed end fitting that attaches to the face of a post or wall with the included screws or bolts. 130° pivot range allows for angled stair terminations. Includes 2-in lag screws for wood posts (½-in bolts for metal posts sold separately).



QUICK-CONNECT® SURFACE MOUNT TENSIONER (#9913W-PKG)

Surface Mount fitting with a special swiveling body that allows ¼-in of take up for cable tensioning. Includes same hanger bolts as Surface Mount.



QUICK-CONNECT® THREADED TERMINAL (#9904-PKG)

Inserts through a hole drilled in an end post (wood or metal only). The included flat washer and Snug-Grip® Washer Nut secure the fitting and allow cable tension adjustment. Trim the excess threads and finish with decorative End Caps. Use Beveled Washers for angled stair terminations (End Caps and Beveled Washers sold separately, see *Accessories*, page 13).



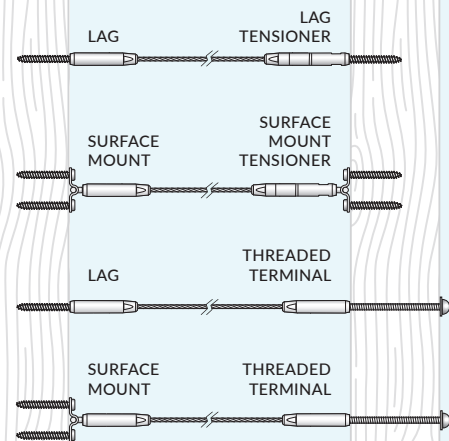
Bulk CableRail 1/8-in diameter, grade-316 stainless steel cable is available in various lengths for use with CableRail fittings.

BULK CABLE OPTIONS

LENGTH	PART #
100-ft	#5100
250-ft	#5250
500-ft	#5500

For a complete list of additional fittings, visit www.feeneeyinc.com/cablerail

LEVEL APPLICATIONS



SEE NEXT PAGE FOR STAIR OPTIONS

STEP
2

Review stair options

Depending on your railing frame conditions and desired aesthetics, there are a variety of available options for using and attaching CableRail cables on stairs.



Using Quick-Connect® fittings

Recommended when one or both cable ends must attach to a wall or inside face of a post. Be sure to include at least one tension adjustment fitting (Tensioner or Threaded Terminal) in each cable assembly; the adjustment fittings can be positioned at either the top or bottom stair post. Threaded Terminal fittings will always require an angled drill hole through the post and a Beveled Washer (#3799-PKG).

Using CableRail Kits

Recommended when there is access to drill through both end posts. When using CableRail Kits on stairs, the Threaded Terminal is typically positioned on the bottom stair post and is attached by drilling an angled hole and using a Beveled Washer (#3799-PKG). Also see our CableRail Stair Kit below.



CABLERAIL STAIR KIT

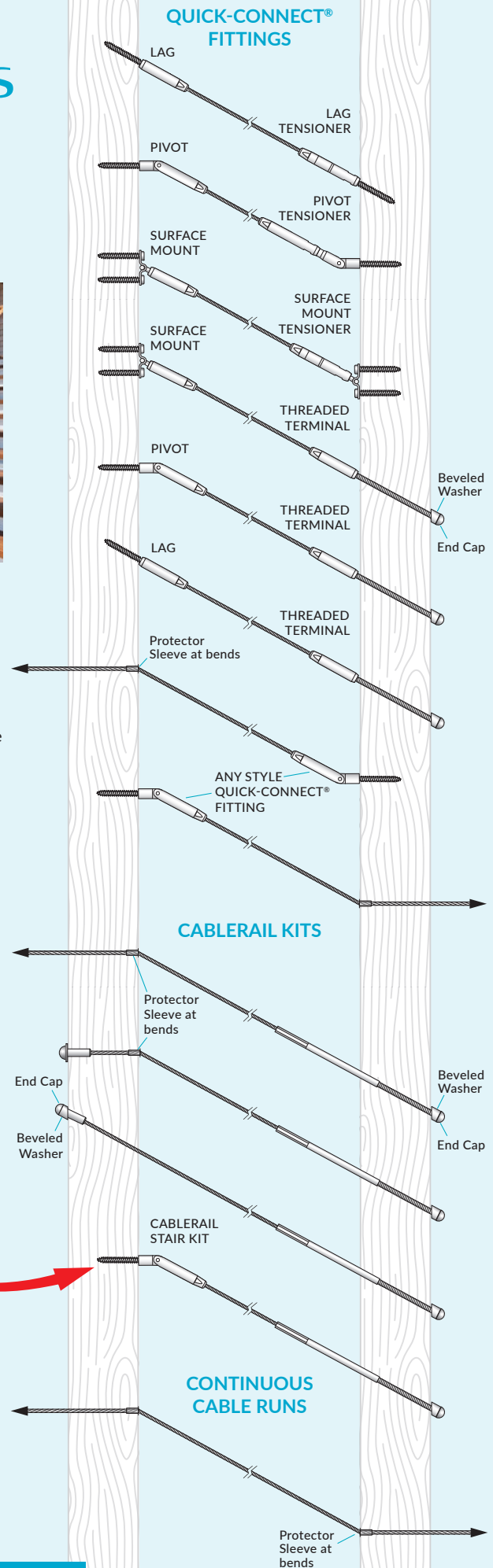
#6520-PKG (All Stainless Steel)

For wood posts only. Typically used where there is little or no access to the backside of the top stair post/wall.

Each kit includes 20-ft of 1/8-in cable with 7 1/2-in Threaded Terminal pre-attached to one end, Quick-Connect® Pivot Fitting with hanger bolts, Snug-Grip® Washer Nut, Beveled Washer, Flat Washer (End Caps, sold separately).

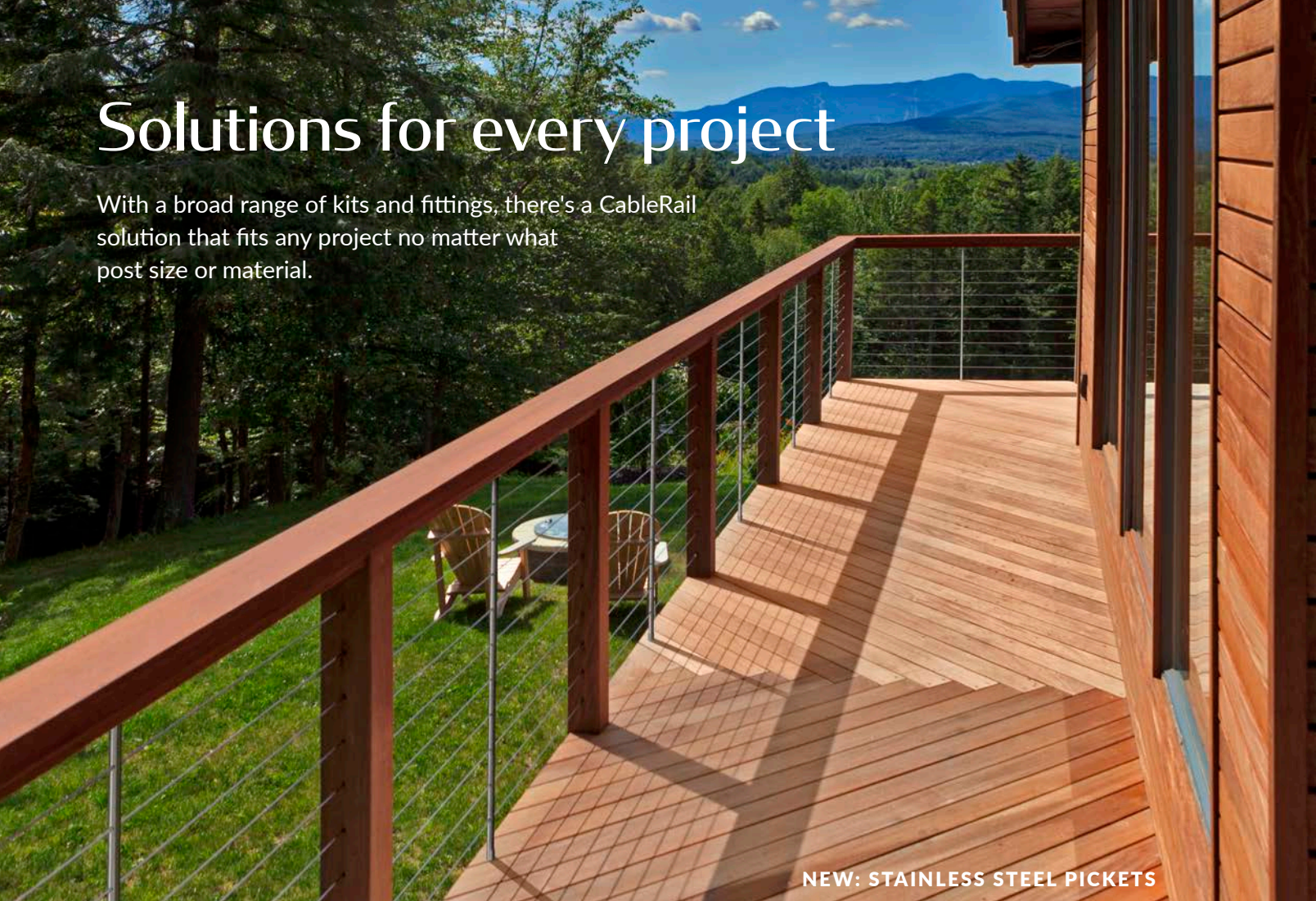
Continuous cable runs

Stair landings or tiered decks may allow for cables to run continuously through the stairs without terminating.



Solutions for every project

With a broad range of kits and fittings, there's a CableRail solution that fits any project no matter what post size or material.



NEW: STAINLESS STEEL PICKETS

STEP 3

Select accessories & tools

END CAPS

Decorative option for covering, protecting, and finishing the Quick-Connect® Inset Fittings and Snug-Grip® Washer Nuts.



STAINLESS STEEL

- Dome style, 4 pack (#3372-PKG)
- Crown style, 4 pack (#3373-PKG)
- Chamfer style, 4 pack (#3374-PKG)



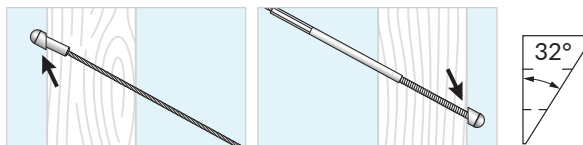
COLORED POLYETHYLENE

- Black, 10 pack (#7071-PKG)
- White, 10 pack (#7072-PKG)
- Brown, 10 pack (#7073-PKG)
- Gray, 10 pack (#7074-PKG)
- Bronze, 10 pack (#7077-PKG)

BEVELED WASHERS (stainless steel)

For providing a flat bearing surface when attaching fittings at angled stair terminations. 32° angle to fit most stair angles (26° and 37° angles available as special order).

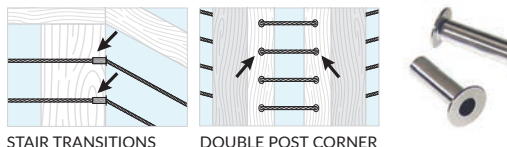
- 4 pack (#3792-PKG) fits Quick-Connect® Inset Fitting
- 4 pack (#3799-PKG) fits Threaded Terminals



PROTECTOR SLEEVES (stainless steel)

For protecting corner and stair transition posts from cable abrasion. Fits 1/4-in diameter drill hole. For wood and composite-sleeved wood posts only.

- 10 pack (#3210-PKG)



STAIR TRANSITIONS DOUBLE POST CORNER

More CableRail accessories & tools

INTERMEDIATE PICKETS (powder coated aluminum)

Slender, low-maintenance, and time-saving picket option for wood frames up to 42-in high. Pre-drilled at 3-in spacing for 1/8-in cables. Slotted holes on stair pickets will accommodate stair slope between 20° and 45°. Includes base plates and attachment screws. Size 3/4-in sq x 44-in long for level railings and 46-in long for stair railings. Trim to fit.

LEVEL RAILING PICKET

Silver, 1 pack (#7648 SLV-PKG)
Black, 1 pack (#7648 BLK-PKG)
White, 1 pack (#7648 WHT-PKG)

STAIR RAILING PICKET

Silver, 1 pack (#7649 SLV-PKG)
Black, 1 pack (#7649 BLK-PKG)
White, 1 pack (#7649 WHT-PKG)



INTERMEDIATE PICKETS (stainless steel)

Slim, 5/8-in diameter 316 stainless tube picket for wood frames up to 42-in high. Pre-drilled at 3-in spacing for 1/8-in cables. Slotted holes on stair pickets will accommodate stair slope between 20° and 45°. Includes all attachment hardware. Size 40-in or 46-in long for level (36-in or 42-in railings) and 51-in long for stair railings. Trim to fit.

LEVEL RAILING PICKET

Stainless, 1 pack (#SSPK 36L-PKG)
Stainless, 1 pack (#SSPK 42L-PKG)

STAIR RAILING PICKET

Stainless, 1 pack (#SSPK STR-PKG)
Includes 3 stair top sockets to accommodate various stair slopes, 3 sleeves for bottom rail application at 26, 32 & 37 degrees. Stair bottom sleeves are also available in custom order for stair frames with a bottom rail.



STAINLESS STEEL CLEANER & PROTECTANT KIT

For cleaning and protecting all CableRail stainless steel cables, fittings, and accessories. Combo pack includes 100 ml. bottle of both SteelRenewal™ and SteelProtect™, sponge, brush, gloves. (#5064-PKG)

⚠️ WARNING: This SteelRenewal™ product can expose you to propylene glycol which is known to the State of California to cause cancer. For more information go to www.P65Warnings.ca.gov



QUICK-CONNECT® RELEASE TOOL

For releasing the Quick-Connect® jaws to remove or adjust fitting. 1/8-in diameter cable (#3128-PKG)



CABLE LACING NEEDLE

For quickly lacing cable ends through posts without snagging. 1/8-in diameter cable (#3221-PKG)



CABLE TENSIONING TOOL

For quick and easy tensioning of CableRail cables when using Quick-Connect® Inset Fittings. 1/8-in diameter cable (#6005-PKG)



CABLE TENSION GAUGE

Easy to use tool for checking cable tension. 1/8-in, 3/16-in, and 1/4-in diameter cable (#6004-PKG)



WRENCH WHEEL

An easy-to-use tool for tensioning Quick-Connect® Tensioner fittings that allows for continuous full rotation without requiring repositioning of wrenches. (#6006-PKG)



HANGER BOLT INSTALLATION TOOL

For easy installation of hanger bolts used for Quick-Connect® Lag- and Pivot-style fittings. (#3988-PKG)



CABLE CUTTERS

For shearing stainless steel cables. (#2972-PKG)
⚠️ WARNING: This product can expose you to Di(2-ethylhexyl)phthalate (DEHP) which is known to the State of California to cause cancer and birth defects or other reproductive harm. For more information go to www.P65Warnings.ca.gov

CableRail Conceal Kit accessories & tools



CONCEAL END CAP

Available in DesignRail® Colors and Stainless Steel. (#CCP)



CONCEAL STAR DRIVER

Part of a toolset used to install and tension Conceal CableRail Kits. (#CSDT)



CONCEAL CAP REMOVAL TOOL

For removing a conceal end cap. (#CCRT)



CONCEAL TOOL KIT

Includes a Conceal Star Driver, a 1/2 and 3/16-in Ratcheting Box Wrench, and a 3/32-in T-Handle HexWrench. (#CRC-Kit)

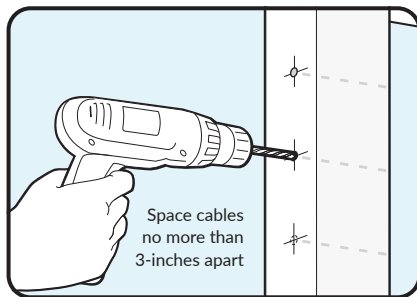
Easy installation



DETAILED INSTRUCTIONS ONLINE

Before beginning installation, be sure to carefully read all frame preparation guidelines. Find product installation instructions and tool checklists at feeneyinc.com/cablerail

CableRail is easy to install. Just follow these simple steps. The Conceal and ATR Kits have a different installation process. Please visit our website for more detailed information.



Space cables
no more than
3-inches apart

1 MEASURE AND DRILL

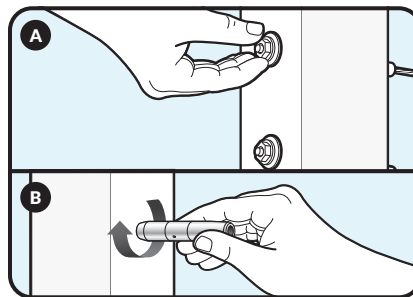
Measure, mark, and drill holes for the end posts and all intermediate posts.

A – FOR CABLERAIL KITS

Threaded Terminal post: $\frac{1}{16}$ -in drill
Intermediate posts: $\frac{1}{4}$ -in drill
Inset Fitting post: $\frac{1}{4}$ -in drill + $\frac{3}{8}$ -in counterbore to recess fitting.

B – FOR BUILD YOUR OWN

Fittings posts: $\frac{3}{64}$ -in drill (pilot holes)
Threaded Term. & Intermediate posts same as CableRail kits above.



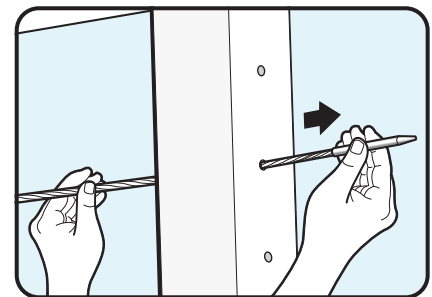
2 ATTACH TO ONE END POST

A – FOR CABLERAIL KITS

Secure the Threaded Terminal to one end post with a flat washer and Snug-Grip® Washer Nut.

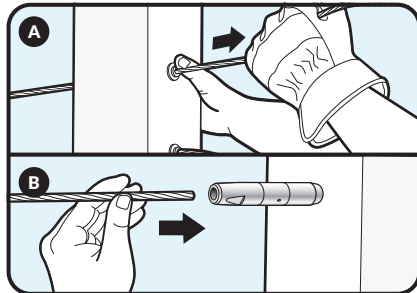
B – FOR BUILD YOUR OWN

Attach Quick-Connect® fitting to one end post with the screws/hanger bolt and then insert cable. The Quick-Connect® jaws will lock the cable in place.



3 LACE CABLE

Lace the free end of cable through all intermediate posts. For even easier installs, try a Lacing Needle (#3221-PKG).



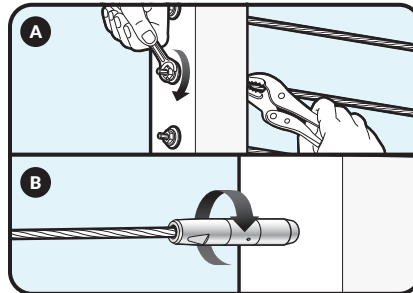
4 ATTACH TO THE OTHER END

A – FOR CABLERAIL KITS

Slide the cable through the opposite end post and slip on a washer and Quick-Connect® Inset Fitting. Pull the cable to remove slack. For even easier installs, try Cable Tensioning Tool (#6005-PKG).

B – FOR BUILD YOUR OWN

Attach a Quick-Connect® Tensioner Fitting to the end post with the screws/hanger bolt or with the Snug-Grip® Washer Nut if using a Threaded Terminal. Trim the cable to length, then insert the cable end into the fitting.



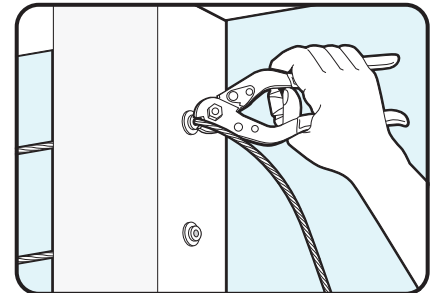
5 TIGHTEN CABLE

A – FOR CABLERAIL KITS

Tighten the Snug-Grip® Washer Nut to adjust final cable tension.

B – FOR BUILD YOUR OWN

Spin the Quick-Connect® Tensioner Fitting body to adjust final cable tension. (If using a Quick-Connect® Threaded Terminal, spin the Snug-Grip® Washer Nut to tension).



6 TRIM & FINISH

A – FOR CABLERAIL KITS

Trim the excess cable at the Quick-Connect® Inset Fitting and excess threads at the Snug-Grip® Washer Nut. Finish with decorative End Caps (accessory item).

B – FOR BUILD YOUR OWN

When using a Quick-Connect® Threaded Terminal, trim the excess threads and finish with decorative End Caps (accessory item).



www.feeneyinc.com

1-800-888-2418

Reorder # 11701 Date 01/20

AVAILABLE AT:



ENTER OUR PHOTO CONTEST

Send us your project photos for a chance to win cash prizes. Visit feeneyinc.com/photo-contest for details. Also, follow us on Instagram @feeneyinc