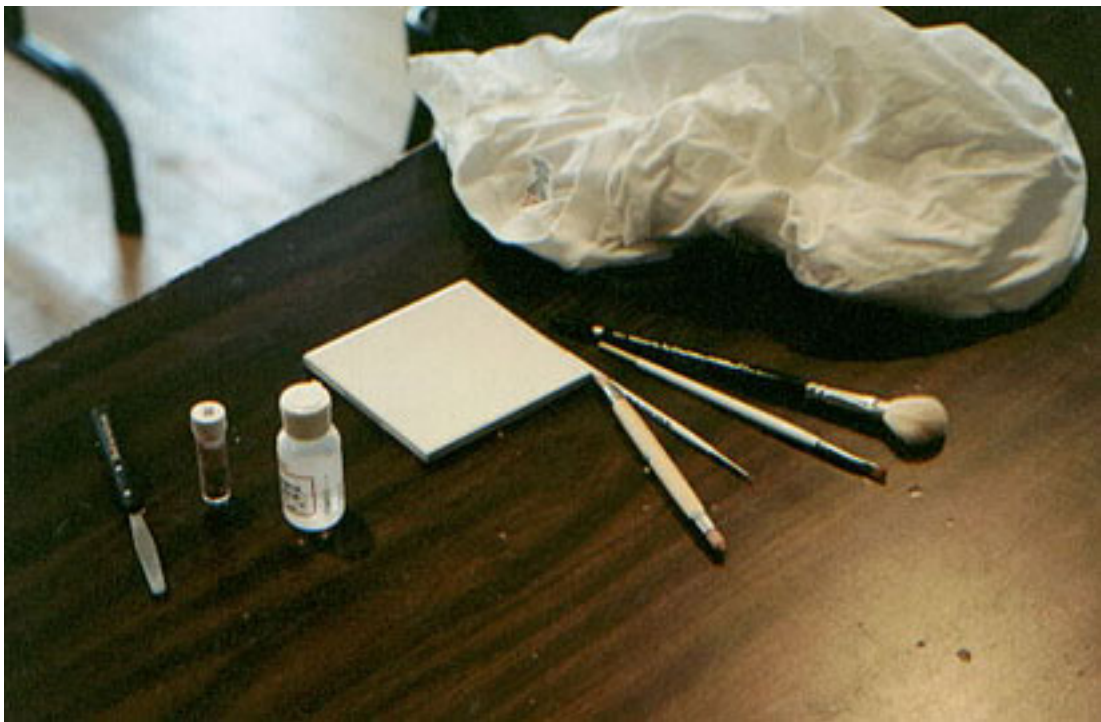


## *Over-wash method for China Painting*

Here I will explain and show with pictures the steps to doing an over-wash painting on your doll. I love the translucent glow that comes from this method and you'll get such a nice skin tone. Something to remember.. it is very important that you get all the scratches out of your piece that you're going to paint this way. If you leave scratches, the china paint will show the scratches like a red streak. This happens because the paint sinks into the scratch. In the wet cleaning instructions, rubber gloving is very important to get out the imperfections. If you dry clean, I wouldn't suggest this type of painting. During dry cleaning, there's usually a few scratches left and you probably won't like the finished product. If you have any questions, feel free to call me or e-mail me.

1. This is the setup that I use. I try to keep things simple. I use dry china paint and oil based media. The rest consists of a nice china mop, square shader, detail brush, palette knife, wipe-out tool, tile and an old cotton t-shirt. I forgot to take the picture with a makeup sponge. Sorry, you'll need one to paint with.



2. Here I show you how to mix china paint on a tile. Since I use Seeley's Creamy Rose for all my painting, I'll be mixing quite a bit of paint. With the oil-based media, the paint left over never dries up so therefore never wasted. It's ready whenever you are. Drop oil onto the tile until you have about the size of a quarter.



3. Put a heaping pile of paint in the middle of the oil.



4. With your palette knife, mix the oil into the paint.
5. When mixing, use a circular motion. Your paint should be the consistency of toothpaste. It's very important to mix thoroughly. If there are red specks left, they'll leave red specks on your porcelain. If your paint is too thick, add a drop of oil. If it's too thin, add a small amount of paint until you get the right consistency.



6. Next you need to put a few drops of oil on the piece to be painted.



7. You want to be able to smooth your fingers over the piece without it being too slippery. Compare it to the way lotion feels when you first put it on. The purpose of putting oil on the piece is so the paint rubs on smoothly. If you have too much oil, you'll end up wiping most of your paint onto your t-shirt, which will just waste your paint. Before you start to apply the paint, transfer the piece to your t-shirt so that your hands aren't touching it. From here on out, only hold the piece with your t-shirt. Touching painted areas with

your fingers will smear the paint and put fingerprints on it. If this happens, just smooth it again with your t-shirt.



8. Pick up some paint with your makeup sponge. If you're using a new sponge, you'll need to saturate it some with the paint. After it's saturated, you don't need to pick up as much paint.



9. Apply paint to your piece by dabbing it around, not wiping it on. It's not necessary to cover the whole piece. You're going to use this paint to smooth and push into recessed areas for depth.



10. Using your square shader, take some of the paint and push it into any recessed area: your detail work, the palm, between your fingers, etc.



11. Another shot of shading.



12. Now take your t-shirt and rub in the paint. The places where you shaded will be darker than the rest of the piece. This is what you want. When china paint is fired, the reds will lighten up so don't panic if your shading is a little dark. It is important to make sure your shading is smooth. If it's not, take the paint off your shader by rubbing it gently onto your t-shirt then smooth the shading areas. This will let you pick up some of the paint. Learning to use the square shader will help you out with your smoothness.



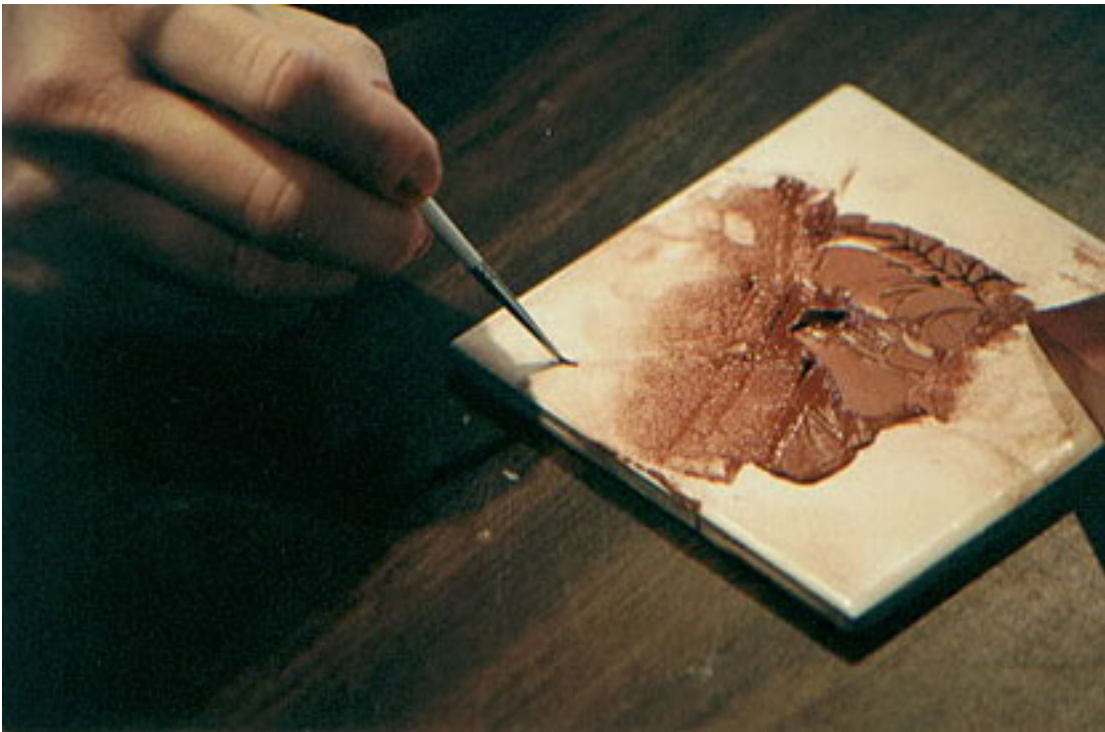
13. This picture shows a spot that I didn't rub hard enough. I did this to show you not to leave the paint this way. The way the paint is left is what it'll look like when it's fired on.



14. Here's my piece rubbed smooth and showing the depth from the shading.



15. Next, we're going to do the nails. I'm showing where to pick up the paint for a natural looking fingernail. You don't need too much paint for this.



16. Using your detail brush, put some paint on the nail to work with. You may use this brush to do the whole nail if you can keep it smooth. The biggest mistake people make when painting is trying to put too much paint on and then wondering why they have streaks. It's better to put a light coat on first and if it's not dark enough for you, fire on another coat. Lighter coats on top of lighter coats will give you that smooth, natural look.

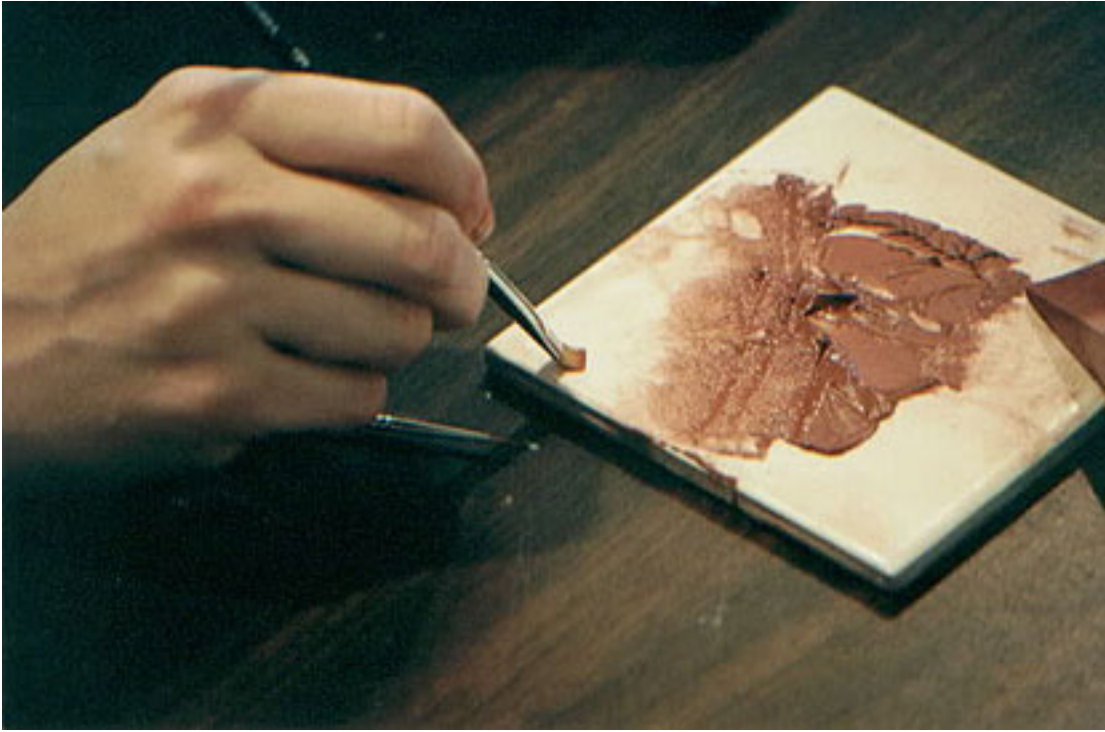




17. Here I show you how I paint my nails. I use the corner of my square shader instead of a detail brush. Now, I'm not knocking the detail brush. I've just trained myself on painting and shading at the same time. If you use the detail brush, you may feel that you have more control where the paint goes. Then, take the shader and smooth over the nail lightly to pick up any thick paint.
18. This is your wipeout tool. This tool comes in very handy. If you accidentally painted out of your detail lines, use the wipeout to pick up unwanted paint. Each time you swipe up some paint, wipe it off on your t-shirt. If you don't, the wipeout will drag the picked-up paint back onto your piece. You must clean it off after each swipe. This tool has an angular side for swiping under the nail and a rounded side for cleaning around the top of the nail. Clean your painting as best as you can.



19. I will show you how to highlight some areas. Using your square shader, pick up some paint from the lighter side of the tile.



20. Now, very lightly, highlight the knuckle detail that you've put in. Make sure this looks smooth. You'll love the look after it's fired. It brings out the knuckles nicely.



21. Using your china mop, pick up some paint from the lighter side of the tile again. Use a pouncing, circular motion and this will even up the paint on your brush.



22. Now I'll show you where I highlight with the china mop. First, I do the top of the hand. If you have too much paint on your mop, you'll probably have blotches happen. Don't worry, just rub lightly with your t-shirt until smooth. Remember, the reds are slightly darker until fired. If it looks just a shade too dark for you, smooth some more with your t-shirt.



23. I also hit the elbow with the mop. I sue my china mop on any surface I want to look 3-d or stand out; tops of hands and feet, elbows, bottoms of feet, ankles, knees, cheeks, forehead, nose, chin, and shoulders. I think I mentioned them all. You get the picture.



24. A closer shot of highlighting the elbow.



25. A finished piece. You probably just thought... she told us not to touch the piece with our fingers! You can hold any piece above the seam because it doesn't show after you glue your body. Gotcha!!



26. A beautifully painted hand.

