

# Making A Mohair Wig



For this project we are making a wig for a doll with a 9" (cm) head circumference, so a one-yard package in Pale Blond will be ample. You will also need a buckram wig cap to which you will sew strips of wefted mohair. In the previous issue of *Dolls Beautiful* (2004-2) we showed you step by step how to make a cap using Seeley's Buckram Wig Cap Material.

## STEP 1

If you purchased a ready-made wig cap you will need to try it on the doll first to make sure it fits properly. If it is too large you can sew a little dart or two in the cap. If it is too small it will stretch a bit. If necessary, trim any excess material from the cap so that the edges follow the doll's hairline. After trimming the cap stay stitch all around the edge of the cap using a double thread.

Our wig will be in the classic loosely hanging style with bangs. For this style there will be three rows of hair and a topknot. Place the wig cap on the doll and use the pen to mark the center front and the crown, which will be the placement for the topknot. The crown is the point on the top of the head from which the hair in the topknot can fall naturally all around and is usually closer to the front edge of the cap than the back. If you

**M**aking a mohair wig for your doll is easy and fun. If you have never tried to make a wig before, don't worry. Just take it step by step and you will be rewarded with a beautiful end result. Your next doll deserves a handmade mohair wig for her crowning glory, so grab your doll, gather the items on the supply list and get started!

Mohair, which comes from the Angora goat, is smaller in diameter than human hair or the fibres of most ready-made synthetic wigs, so it is more in scale for the size of dolls. Also, the variation in colour that naturally occurs within a strand of mohair creates a soft, natural look. Mohair Locks, which have already been washed, dyed, sewn to a cord in a strip (wefted) and combed, come pre-packaged in 36" lengths in eleven different colours.

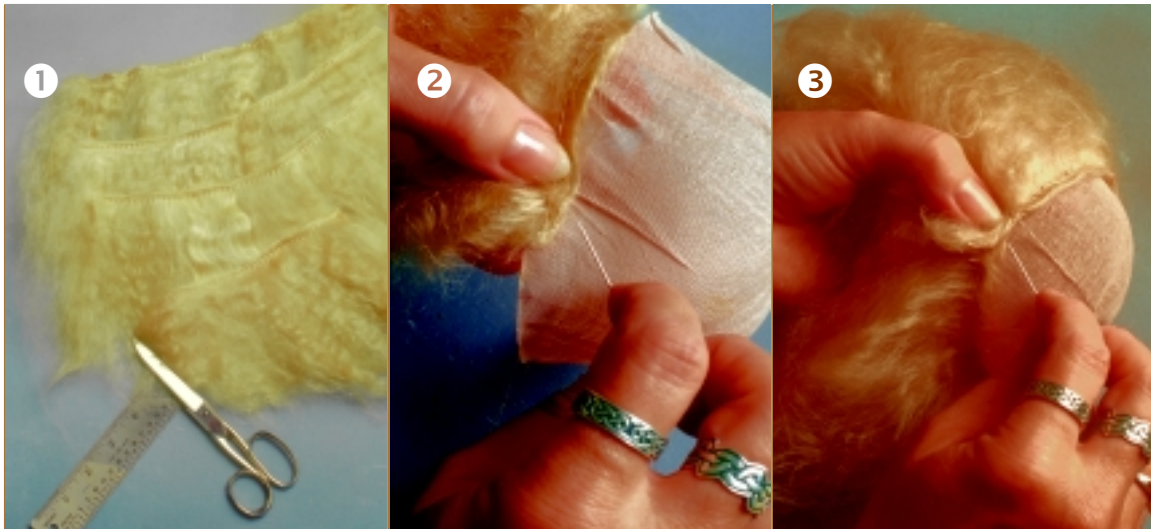
## SUPPLY LIST

- Mohair wefts (1 x 36") Pale Blond
- 9" wig cap or make a cap using
- Buckram Wig Cap Material
- Scissors
- Needle and thread to match hair colour
- Large toothed comb such as a metal dog comb
- Rat-tail comb
- Pen
- Measuring tape or ruler
- Assorted curlers, permanent rods, straws or small curling iron
- Hairpins and clips
- Spray bottle for water
- End papers

place the mark too far back on the head all the hair in the topknot will fall to the back of the head.

Next mark the placement lines for the three rows. The bottom row will be along the edge of the cap. The other two rows will be concentric circles evenly spaced between the bottom row and the topknot. Because the topknot is not in the exact center of the cap the rows may be a little further apart in the back than in the front. The size of the doll's head and the thickness of the hair will determine how many rows of mohair you need, but normally you do not want the rows to be spaced more than about 1" apart.

You may work with the mohair in one long piece, cutting it off as you complete each row. It is easier, however, to cut the mohair into the appropriate length for each row (approximately 10", 9" and 7") plus a 6" piece for the topknot.



### STEP 2

The mohair has a right side, which is smooth, and a wrong side where the short ends of hair have been folded over the cord and sewn down. Use an overcast stitch to sew the longest strip of mohair to the bottom row with the right side facing you and the wrong side against the wig cap. Place the top edge of the strip just above the edge of the cap. Do not pull the stitches too tight. Take your time and handle the hair carefully to keep it from tangling.

### STEP 3

When you come to the end of the strip slightly overlap the two ends. This will allow the hair to hang down naturally without a noticeable separation.

### STEP 4

Sew the next two rows in the same manner as the first.

### STEP 5

Make a small hole in the cap at the point you marked for the crown. Cut a 6" strip of mohair. Starting at one end of the wefted edge of the strip, roll it into a cylinder with the wrong side facing out.

### STEP 6

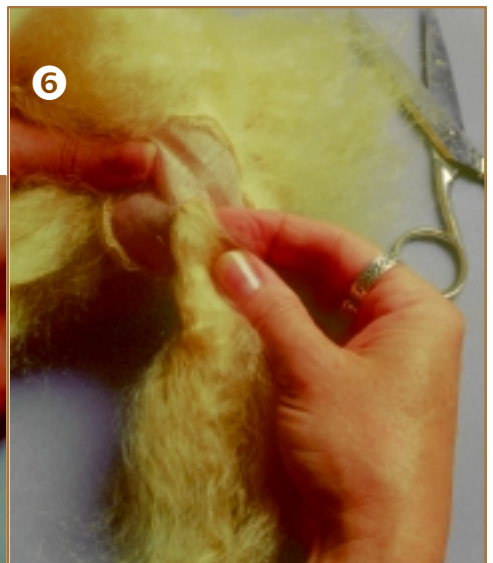
With the right side of the cap facing you, insert the roll of mohair into the hole just far enough that the stitched edge of the wefting is hidden. If you push too much of the roll inside the cap the hair in the topknot may end up too short.

### STEP 7

Turn the wig cap to the inside. Gently begin to unroll the topknot and stitch it down to the buckram. Take small stitches and avoid catching the hair on the outside of the cap.

### STEP 8

When you have finished sewing the topknot the roll will be completely undone and stitched down in a neat circle close to the hole cut in the buckram. To ease in the fullness of the wefting you may need to gather it slightly. If the hole is not completely filled in with mohair simply stitch it closed.

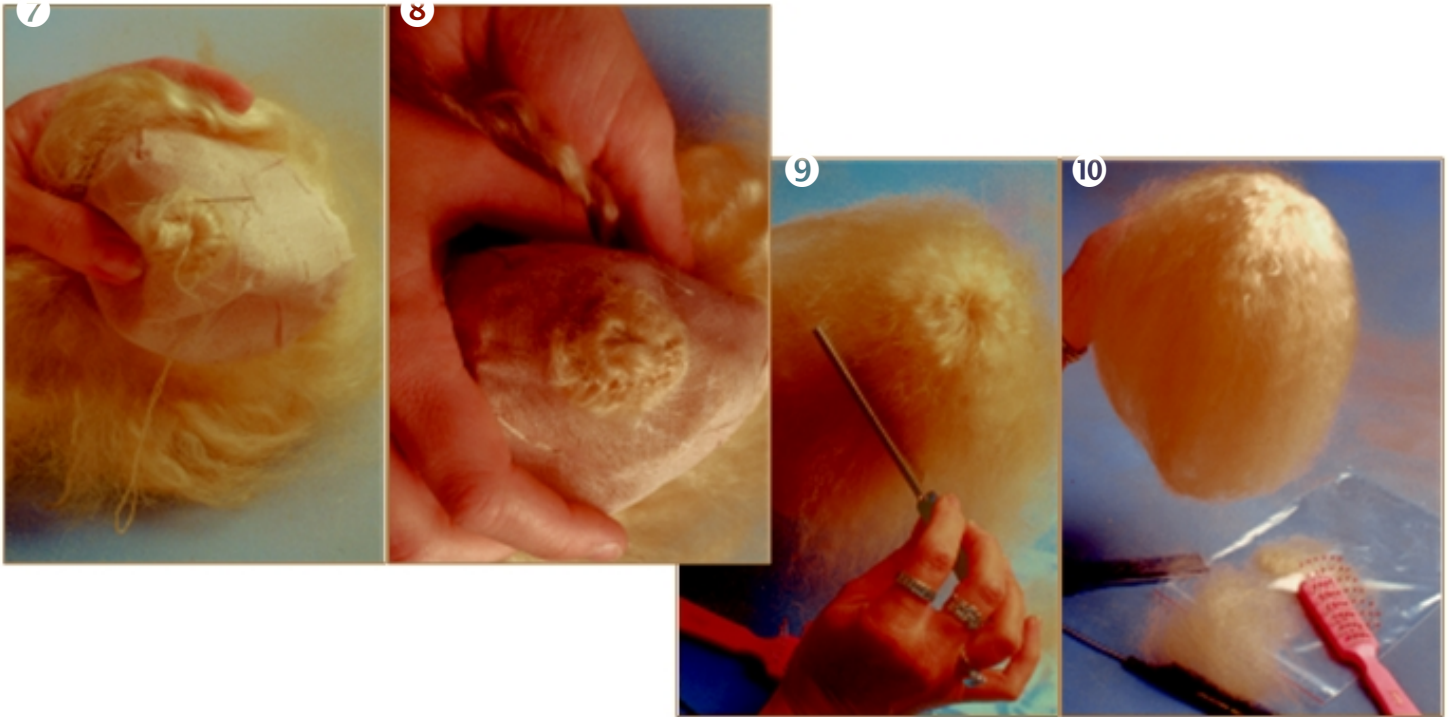


### STEP 9

Turn the wig to the right side. Gently spread the hair of the topknot all around the top of the wig. Gently comb the hair with a large toothed comb such as a metal dog comb. Be careful not to tug too hard with the comb or you will start pulling hair out of the wefting. It helps to comb about a 1" strand of hair at a time, with one hand holding the strand at the base while you comb with the other.

### STEP 10

The wig is now ready for cutting and styling on your doll. For a natural style curl simply spray the hair with a light mist of water and scrunch the hair with your fingers. For a more structured look set the damp hair with curlers or permanent rods as shown later in this notebook.



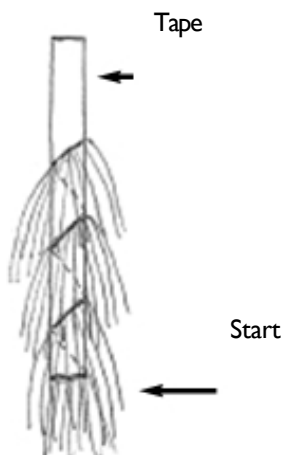
### ADVANCED TIPS

#### How to Create a Longer Style Using Extensions

After you have made a wig you might decide you want it to be a longer style. You can increase the length of the wig by inserting several extensions.

### STEP 1

Cut a 4 or 5" strip of mohair locks and a 5-6" strip of bias or twill tape dyed to match the mohair. Sew the mohair around the tape upwards in a spiralling fashion, stopping about 2" from the other end. This creates a little ponytail of hair. Make 3 or 4 of these ponytail extensions for a 9" wig. For larger dolls you may need more extensions.

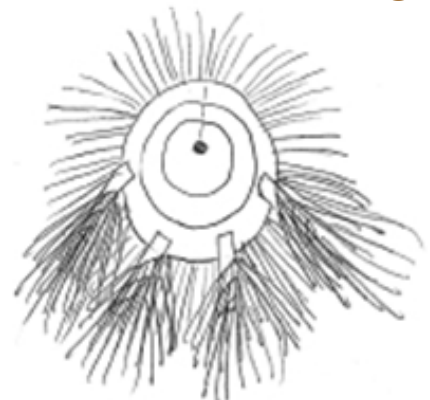


①

### STEP 2

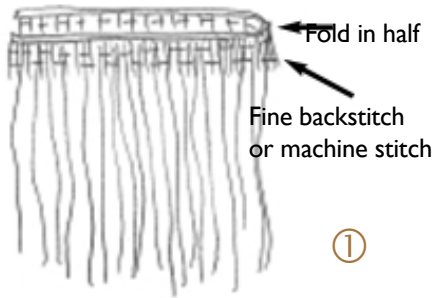
Sew the extensions to the wrong side of the wig cap. Place the 2 best looking extensions to the wig cap just behind the ears of the doll. Sew the others evenly spaced along the back of the wig cap. Attach the extensions at the top edge of the tape for maximum length. Once you have combed the extensions into the other hair the finished wig will be 3 or 4" longer. For shorter extensions simply cut off some of the excess tape before sewing the extensions on.

②



Wrong side of wig cap with extensions.

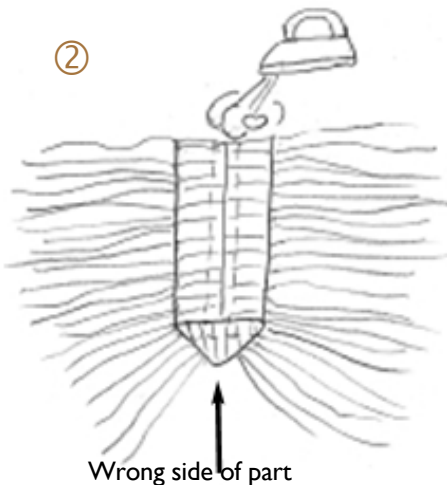
## Creating a Part



a strip of mohair twice the distance of the marked line plus 1-2" for turn under. With right sides together fold the strip in half. Using a fine backstitch or machine stitch sew the folded piece together just below the stitching line in the wefting. As you sew make sure the hair is spread out evenly and that there are no gaps.

### STEP 2

Open and flatten out the mohair seam allowance on the wrong side. The fold in the strip will form a little peak. Press the seam allowance flat with a steam iron. Press the parting again on the right side.

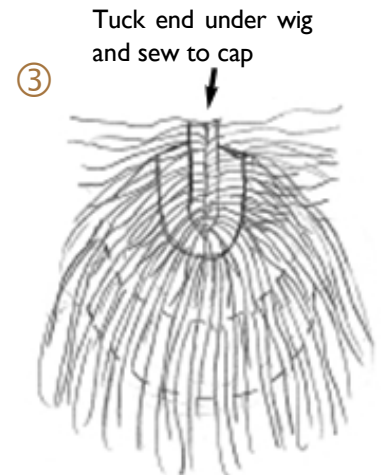


### STEP 1

Mark the placement of the part by drawing a line onto the wig cap either in the center or to one side. Measure the length of the marked line. Cut

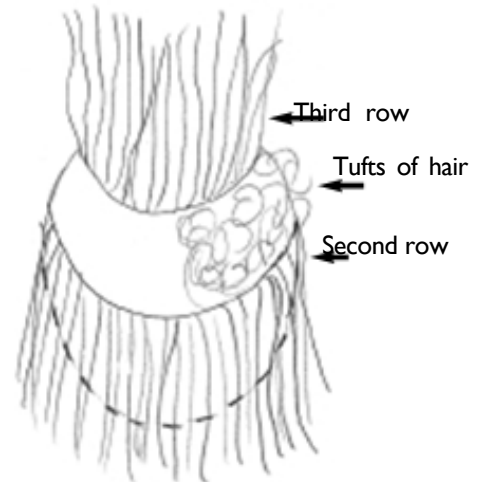
### STEP 3

Place the parting on top of the wig cap along the marked part line in lieu of a top knot. The unfolded end of the parting will protrude from the front edge of the cap. Sew the parting to the wig cap along the center of the seam. Overcast the edges of the seam allowance to the wig cap. If parting looks thin sew another strip of mohair on top of the parting seam allowance and very close to the part. Tuck the loose end of the parting to the wrong side of the wig and sew to the wig cap.



## Filling in a Thin Spot

As you comb and style the finished wig, save all the loose hair that comes out in the comb and place it in a plastic bag. You can use this loose hair if you need to fill in or cover up any spot where the hair appears thin, exposing the stitches underneath. Simply lift the row of hair above the thin spot and tuck a "scrunched" tuft of loose hair underneath. Tack the tuft in place with a few stitches. Once the rows are back in place and combed you will not be able to see either the tuft or the thin spot!



## STYLING A BASIC WIG

Styling mohair is easy because it is very much like human hair. Mohair curls well if it is dampened with water, rolled over curlers and dried. That's seems easy enough, but of course there are a few tricks to success.

Because mohair is soft and very fine it tangles more easily than human or synthetic hair. Neat styling requires minimal handling to avoid pulling too much hair out of the wig. Plan the curl placement before you start rolling so that you will not have to do much combing or rearranging after the curls have set.

Choose small plastic rollers, permanent wave rods or any other type of curlers that are the appropriate diameter for the curls you wish to make. For tiny



curls cut drinking straws into manageable lengths and use them as rollers. You can also try a small diameter electric curling iron. If any of the curlers or rods have tiny barbs for grabbing the hair use end papers to prevent the hair from becoming entangled. Perm rods are self-closing, but you will need hairpins to secure most other types of curlers.

Begin with a basic wig such as the one we made here using Mohair Locks. Place the wig on a doll's head or wig stand and pin it to the pate or wig stand securely.

Gently comb the dry mohair smooth using a large toothed comb.



### STEP 1

Use the rat-tail comb to separate the hair into two sections. Leave the lower section hanging down. Pull the top section up and secure it with a hair clip. Beginning at the front, comb out a section of hair approximately 1" wide.



### STEP 2

Pull the section of hair straight out from the wig, spray it with water and fold an end paper over the tip of the section. Place a curler or perm rod over the end paper and roll the hair vertically toward the wig. Secure the curler or rod in place.

If you want a very structured hairstyle you can mix a little hair styling lotion or white vinegar with the water in the spray bottle.



### STEP 3

Continue rolling curls around the lower section of the wig in this manner. All curlers or rods should be vertical and spaced just as you want the curls to fall after styling. On a 9" wig like this one use 6-8 curlers on the lower section. Unclip the top section, comb and spray the hair and roll 6-8 more curls. As you wind the top layer of curlers space them between the curlers on the lower layer. Use one larger curler on the bangs, if desired.



### STEP 4

Allow the wig to air dry or use a bonnet type hair dryer. Slip the curlers out and shape the curls into place with little or no combing. If you want smaller ringlets you can separate the curls with your fingers. If the ends of the curls look a bit fuzzy simply snip them off with scissors.

### STEP 5

Use curlers to set the hair in any style you like. Try making a second wig by pulling the hair at the crown away from the face into a small ponytail at the back. Secure the ponytail with a rubber band and roll it with 5 or 6 drinking straw curlers.

