

6D ACTION[®]

Six-Dimensional Activation

6D Action vacuum massage device



New feature:
Dual Cup Treatment

6D Action[®] Clinical Pro

- Main unit with pressure range 0 – 400 mmHg & pulsation range 0.1 – 3.0 s
- Suction hose with a filter and a multifunctional, automatic valve, that enables both treatment with two suction cups simultaneously and treatment with just one suction cup
- 2 x 6 plastic cups in different sizes = 12 pcs
- 5 different sized glass cups, that are also autoclavable
- Roller suction cups, diameters 75 mm and 50 mm
- 5 m roll of 6D Tape with mobilization handles
- Versatile cleaning and service kit for the device, suction cups, multifunctional valve and suction hose
- Power cable and carrier bag

Carrier bag



Comes with Clinical Pro!

6D Action[®] Cleaning and Service Kit

1. Cleaning and service bag, 1 piece
2. Cleaning spray, 1 piece
3. Cleaning wipes package, 1 piece
4. Cleaning wire for hoses, 1 piece
5. Multi Hose, 1 piece
6. Filter assembly, 3 sets (1 filter with 10 cm hose and 3 cm silicon fitting / set)
7. Cotton filters for both roller suction cups, 12 pieces



6D Action[®] Accessories

1. Plastic suction cup set x 6, diameters 85 mm, 65 mm, 45 mm, 35 mm, 30 mm, 25 mm
2. Glass suction cup set x 5, diameters 64 mm, 47 mm, 36 mm, 11 x 19 mm (oval), 12 mm the other end 3 mm
3. Roller suction cup, diameter 75 mm
4. Roller suction cup, diameter 50 mm
5. Roller cup filters 12 pieces and hose filters 2 pieces
6. Hose for plastic suction cups + filter
7. Multi Hose: hose for all suction cups. Includes a multi valve which enables either one cup treatment or dual cup treatment. Includes vacuum hoses for both plastic cups (2x50 cm) and glass cups (2x50 cm).
8. Hose filter
9. Cleaning and service kit
10. 6D Tape 5 m roll



6D Action[®] Basic

- Main unit with pressure range 0 – 400 mmHg & pulsation range 0.1 – 3.0 s
- Single hose for plastic suction cups + filter
- Plastic suction cups x 6, diameters 25 mm, 30 mm, 35 mm, 45 mm, 65 mm, 85 mm
- Roller suction cup, diameter 75 mm
- Power cable
- Carrier bag

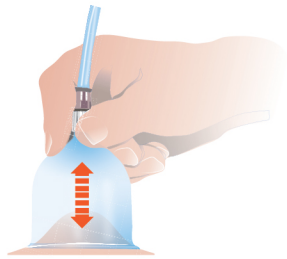


The Four Application Modalities of the 6D Action® Clinical Pro



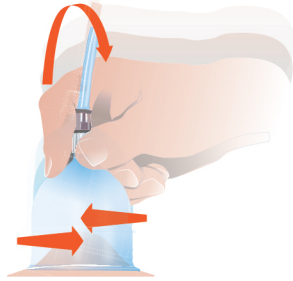
1. Pulsation

In this treatment technique the suction cup pulsates in one place.



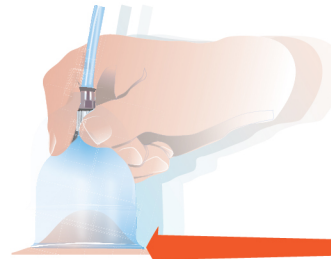
2. Lift and twist

The suction cup is lifted and twisted either with pulsation or continuous suction mode.



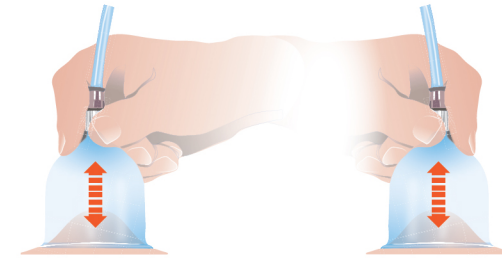
3. Gliding

The suction cup glides on the skin tissue from distal to central.



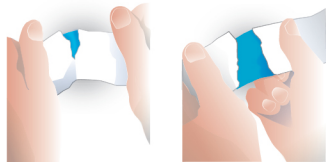
4. Two Cups Simultaneously

Treatment with two suction cups simultaneously.

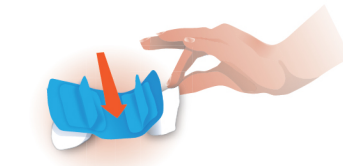


The Application of the 6D Tape® with Mobilization Handles

- a) Clean the skin, remove the hair and make sure that the skin is dry before applying the 6D Tape to the desired area.



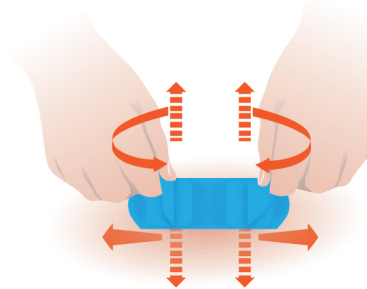
- b) Cut the release liner by first stretching the tape slightly so that the release liner tears. Leave both ends of the release liner unremoved in order to place the tape on the skin without touching the adhesion. 6D Tape should not be stretched at all from the ends of the tape, and the recommended maximum stretch is 15 % with special taping techniques that may require stretching.



- c) Attach the 6D Tape to the desired area starting from the middle and hold the end of the tape with the help of the backing paper. Avoid wrinkles. Finally remove the backing paper from the end of the tape. Repeat for the other end of the tape.



- d) Rub the tape gently but firmly from the middle towards the ends. Increase the rubbing pressure slightly in every rub to ensure strong hold on the skin. Do not start the treatment immediately since the bond reaches its maximum strength in about 15 minutes.



- e) The tissue is activated six-dimensionally by manipulating the 6D Tape with handles in different directions, for example lifting, twisting, stretching, and pushing. You can move the handles with one hand or two hands simultaneously. We recommend manipulating the tape for 5 to 15 minutes. To achieve the best results, activate the tissue with 3-4 hours intervals. The more regularly you activate the tissue with 6D Tape, the better the results will be. The treatment intensity can vary from mild to strong.

