

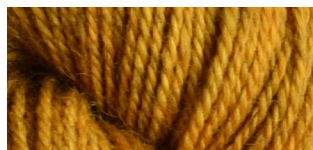
Corrie Worsted

Exclusive to La Bien Aimée

75% Falkland Corriedale & 25% Gotland Wool • 230 meters/ 100g • Needles: 4-5mm



Sandstone



Goldenrod



Yellow Brick Road



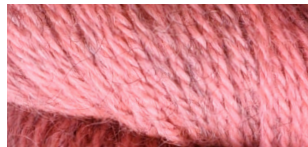
Kokko



Bone



Rust



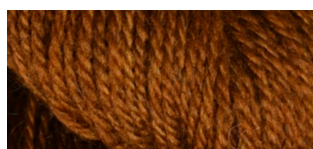
Fluoro Morganite



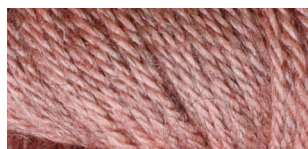
The Shire



Smoke



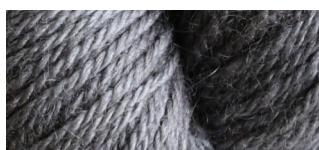
Caramel



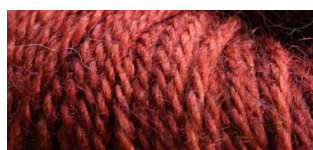
Dawn



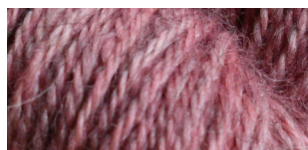
Olive Juice



Stone



Kitsune



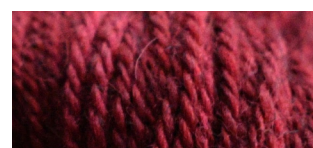
Belle Rose



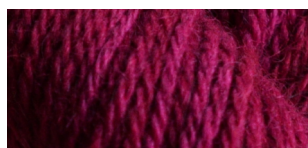
Jonna



Avoine



Eric Northman



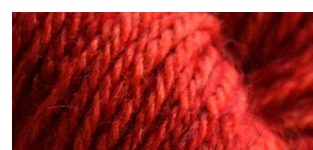
Lise



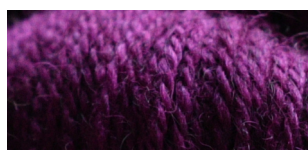
Hegelia



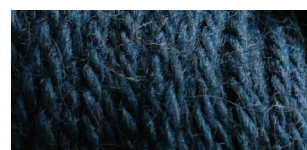
French Grey



Coquelicot



Madeleine



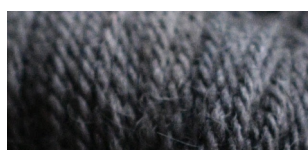
Winterfell



Mist



Highgarden



Moria



Payne's Grey



Quartz Fumé



Nebula



la BIEN AIMÉE

www.labiennaimee.com