

INKMETHIS

calligraphy & engraving



Brushless Portable Calligraphy Engraver

OWNER'S MANUAL

The INKMETHIS Calligraphy Engraver



The INKMETHIS Calligraphy Engraver will take your freehand engraving experience to the next level. Powerful yet quiet and compact, it is perfect for glass, metal, stone, at home use, or in store brand activation event engraving.

- *Personalization available with your name or logo*
- *Available in multiple colors including gold, silver, and rose gold.*
- *Brushless motor for no vibration (less tiring on your hand)*
- *35,000 RPM (most battery models max out at 30k)*
- *Variable speed adjustment & quick pause button*
- *Rechargeable with loooooong lasting battery (8-10+ hours)*
- *100-240V charger (for international use)*
- *Comfortable hand piece with contoured grip*
- *Lighter handpiece for less fatigue (156g)*
- *3/32" Collet to fit many burs*
- *INCLUDES 1/16" reducer to fit the other most common size bur*
- *INCLUDES 10 diamond bit ball burs in two sizes*
- *Two direction rotation (some lefties may prefer counter-clockwise)*
- *Quiet operation for in-store use*
- *Small and portable*
- *Simple & elegant aesthetic*
- *Specially modified INKMETHIS Edition of the Mystisa 2 by RAM*

CONTROLLER FRONT



- 1) Plug the handpiece into the connector on the left front of the unit. Be sure to align the groove in the plastic male plug with the ridge in the socket.
- 2) The power knob turns clockwise to increase the speed. Push the button to pause the motor rotation.

LED DISPLAY

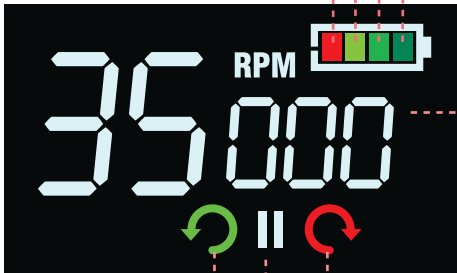
Battery Level Indicator

4 bars: 100% charge

3 bars: 75%

2 bars: 50%

1 bar: 25%



Motor Rotation Speed
(Speed will flash when
on pause mode.)

Green Arrow:
Reverse Direction
(use F/R button
on left side of
controller)

Red Arrow:
Forward Direction

Visible when paused

!!! ERROR CODES:

E1 - Handpiece needs to be checked (not connected or collet is not locked).

E2 - Controller needs to be charged.

E3 - Controller has an electrical problem.

USAGE & MAINTENANCE

- 1) *Be careful not to drop the handpiece. If dropped, check for bent bit and excessive heat or noise while operating it slowly and carefully.*
- 2) *Do not turn power on to the controller while collet is in unlocked position.*
- 3) *Always keep a bur or the blank rod in the handpiece (keeps debris out).*
- 4) *Do not put the handpiece down until it stops rotating fully.*
- 5) *Keep the workplace clean and use proper eye and breathing protection.*
- 6) *Keep the handpiece clean of dust and grindings as best as possible.*
- 7) *Wipe handpiece only with rubbing alcohol (do not use water).*
- 8) *It is normal for the handpiece to feel warm after continued usage.*
- 9) *You may periodically clean with a can of compressed air.*
- 10) *Controller contains a Li-ion Lithium Ion battery which can be recharged approximately 500 times or has an approximate life of 5 years. Li-ion batteries do not have a memory affect and do not need complete discharge between charges. In case of shorter operating time between charges, it may indicate the battery is wearing.*
- 11) *The battery is user replaceable.*

WARRANTY PERIOD

ELECTRICAL EQUIPMENT: *One year from the date of original purchase.*

HANDPIECE: *Six months from the date of original purchase.*

Warranty does not cover misuse or normal wear. Repairs made under warranty will be honored until the completion of the original product warranty period.

Please view full warranty information at www.ramprodinc.com/warranty/

PLEASE REGISTER YOUR ENGRAVER

In order to validate your warranty, you must register your product online within 10 days of purchase tracking receipt.

www.ramprodinc.com/warranty/

INKMETHIS EDITION MYSTISA 2

MANUFACTURED BY



182 Ridge Rd, Suite D, Dayton, NJ 08810 | 732.651.5500