

Dynasty LED Wall Pack

903 Series

903-40

903-40E

FEATURES

- System Light Efficacy 81 LPW
- Easy Installation & Maintenance
- IP65
- Five Years Warranty
- ETL

TYPICAL APPLICATIONS

- Security Lighting
- Pedestrian Lighting

SPECIFICATIONS

PERFORMANCE

LED Chip	LIGHTNING T3C
Lumen Output (IES)	3,000 lm
Power Consumption	40 W
Efficacy (IES)	75 lm/W
Efficacy (LED)	97 lm/W
Color Temperature	4500~5500K (2500~5500K Optional)
CRI	≥80
Lumen Maintenance	L70>54,000 hours (Calculated Using TM-21 Calculator)
Input Voltage	100-277 VAC Photocell Optional
Power Factor	0.95 minimum

ENVIRONMENTAL

IP Rating	IP65
Operating Temperature	-30 to 45°C (-22 to 113°F)
Storing Temperature	-40 to 80°C (-40 to 167°F)
Humidity	15% to 95% RH

PHYSICAL

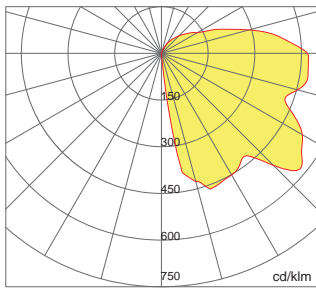
Dimensions (L×W×H)	334×234×297mm (13.1×9.2×11.7 in) (SHADED)
Weight	5.2 kg (11.5 lbs) (SHADED)
Mounting Options	Wall Mount
Fixture Material	Aluminum Alloy

WARRANTY

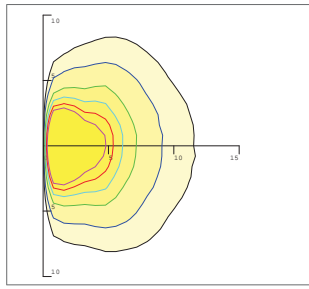
5 Years

Photometrics

NON SHADED



0.0~180.0



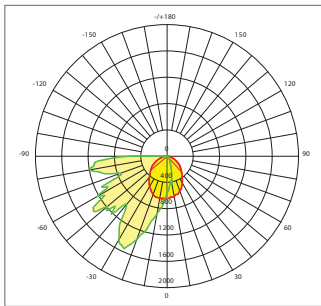
Mounting Hight 4m, 0 Tilt, 50LUX-5LUX

Illumination

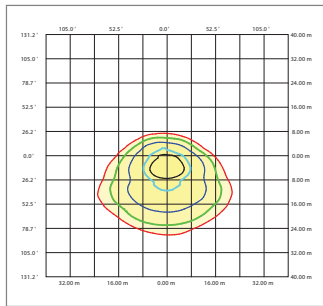
Height	Light Spot	LUX
3m	4×4m	99LUX
3.5m	5×5m	75LUX
4m	7×7m	58LUX
4.5m	8×8m	45LUX
5m	10×10m	37.2LUX

Beam Angle (50% max)	120 DEG
Luminous Flux (IES)	3,240 lm
Light Efficacy (IES)	81 lm/W
Cutoff Classification	Semi-Cutoff

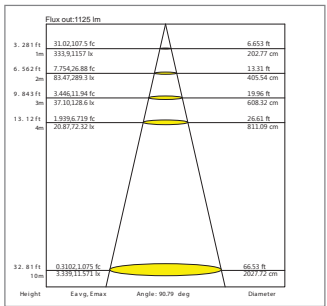
SHADED



AVERAGE BEAM ANGLE(50%):91.9 DEG
 — V 0.0DEG PLAN,93.0deg
 — H 0.0DEG PLAN,90.8deg



MOUNTING HEIGHT: 33'(10.0m)
 — 3% 0.3424lx 0.03181fc — 5% 0.5706lx 0.05301fc
 — 10% 1.141lx 0.106fc — 30% 3.424lx 0.3181fc
 — 50% 5.706lx 0.5301fc



Note: The Curves indicate the illuminated area and the average illumination when the luminaire is at different distance.

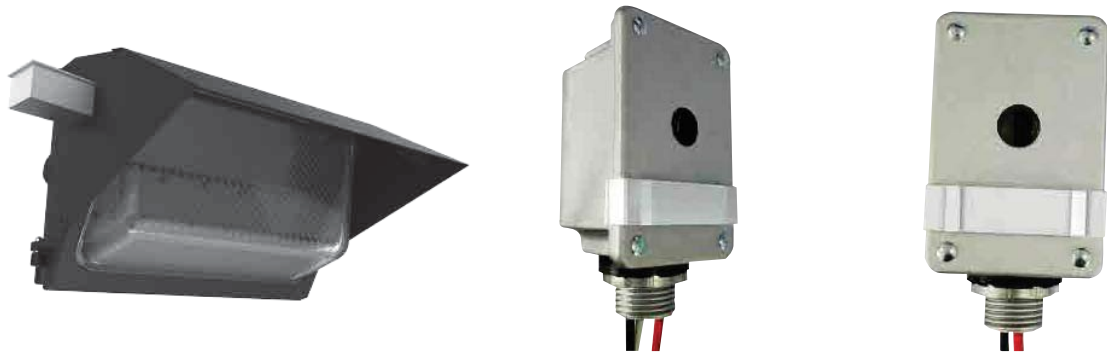
Illumination

Beam Angle (50% max)	120 DEG
Luminous Flux (IES)	3,080 lm
Light Efficacy (IES)	77 lm/W
Cutoff Classification	Semi-Cutoff



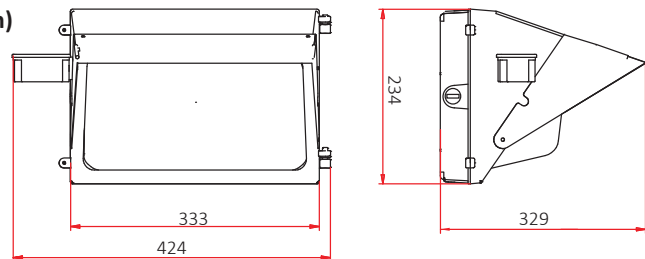
Photocell Option

JL-116 Swivel Control



- Time-delay of up to 30-60s, eliminate turning-off by headlights at night
- Die-cast enclosure for vandalism protection
- Waterproof, applicable for outdoor and underwater purpose
- Light shielding slide for field performance adjustment
- Optional swivel with the sensor/switch body for convenient direction adjustment after installation
- SPST-NO Thermal switch
- Aluminum Die-cast housing
- 1/2" CdS Photocell
- 1/2" threaded conduit, with rubber gasket & Zinc alloy Lock-nut
- AWG #14 leads rated 105 °C

On-Off Levels: 10~20Lx On(Dusk): 30~60Lx Off(Dawn)
Ambient Temp.: -40°C~+70°C
Related Humidity: 96%
Power consumption: 1.5VA Max.
Electrical Life: 6500 cycles

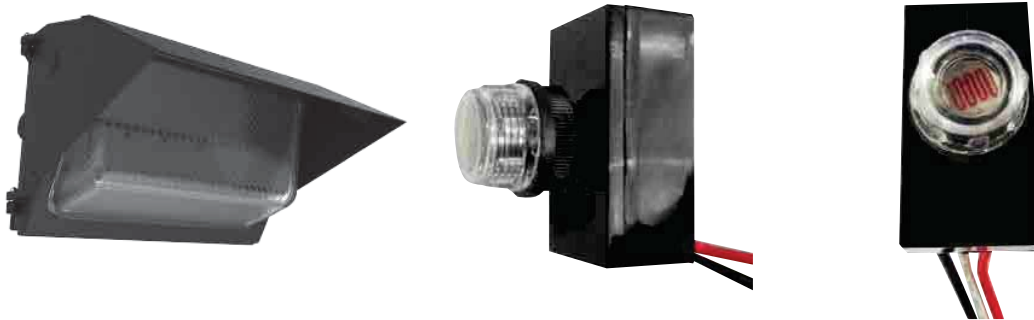


Model.No.	Rated Voltage	Applicable Voltage	Rated Loadings 2000W Tungsten 2000VA Ballast	Certificates
JL-116A	120VAC	110-130 VAC		
JL-116B	220VAC	200-240 VAC		
JL-116C	208VAC	190-230 VAC		
JL-116D	277VAC	250-305 VAC		

*Append "V" for additional swivel; Append 2 numeric digits to indicate lead length in inches.

Photocell Option

JL-103 Button Control



- Applicable to control passage lighting and doorway lighting automatically in accordance with the ambient lighting level
- UL & C-UL listed by UL Inc and is comply with the Standard for Non-industrial Photoelectric Switches for Lighting Control UL773A
- Raintight, applicable for outdoor purpose
- SPST-NO
- Thermal switch
- Polycarbonate enclosure & eye
- 1/2" CdS Photocell
- 3/8"-18 threaded nipple, with rubber gasket & plastic Lock-nut
- High grade leads available

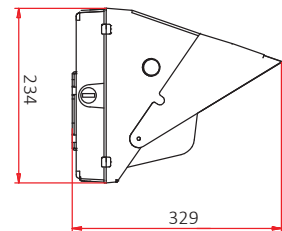
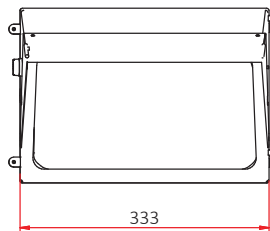
On-Off Levels: 10~20Lx On(Dusk): 30~60Lx Off(Dawn)

Ambient Temp.: -40°C~+70°C

Related Humidity: 96%

Power consumption: 1.5VA Max.

Electrical Life: 6500 cycles

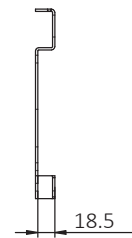
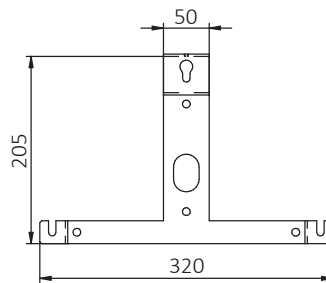
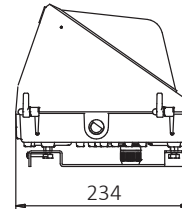
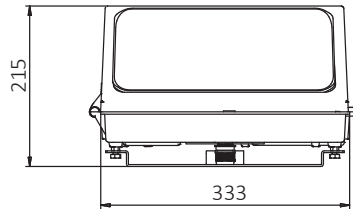
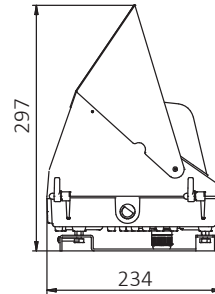
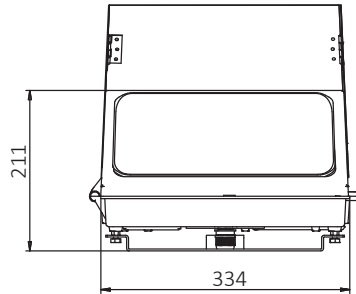


Model.No.	Rated Voltage	Applicable Voltage	Rated Loadings 500W Tungsten 850VA Ballast	Certificates
JL-103A	120VAC	110-130 VAC		
JL-103B	220VAC	200-240 VAC		
JL-103C	240VAC	208-277 VAC		
JL-103D	277VAC	250-305 VAC		

*Append 2 numeric digits to indicate lead length in inches.

Mounting Options

Wall Mount



CAO LIGHTING, INC.
LED through Innovation™

est Skyhawk Drive, West Jordan, UT 84084-4501
Phone 877.236.4403 Fax 801.256.9287
customer@caolighting.com
www.caolighting.com

