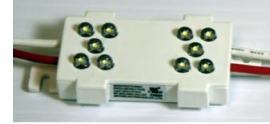




Datasheet - Channel Letter Illumination Systems

LuxemBright



Introduction

The LuxemBright™ LED channel letter illumination system is a low voltage, highly efficient alternative to traditional neon and fluorescent lighting. It offers easy installation, durability, and a long life span for all of your channel letter illumination needs. The 10 LED per module cluster design allows for extremely bright and homogenous lighting.

Features

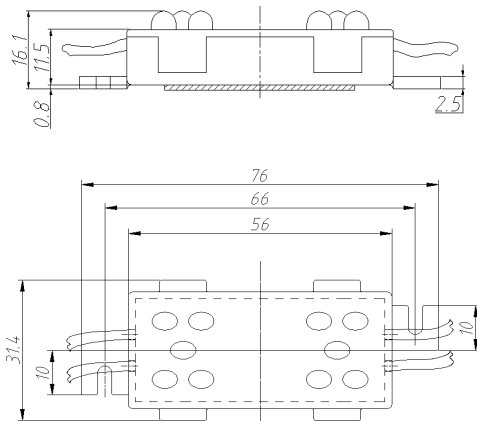
- UL and CSA registered
- Pixel type light source
- Colors available in white, warm white, red, orange, yellow, green and blue
- Custom colors available upon request
- Water-resistant (passes ASTM salt fog spray test, standard ASTM B117, G85)
- Uniform color and coverage
- Optimum heat management
- Available in standard and economy version
- Can be cut at any point between modules
- Multiple mounting options
- Easy to install
- Adhesive pull tab for easy placement

Applications

- Pan channel and reverse channel
- Accent or cove lighting
- Display box
- Backlighting
- RV and other 12VDC lighting applications
- Architectural lighting



Mechanical Dimensions



Notes:

1. Connect red wire to DC positive and white wire to DC ground.
2. All dimensions are in mm.
3. Dimensions without tolerances are for reference only.
4. Connection wires are 18 AWG.

Electrical / Optical Characteristics

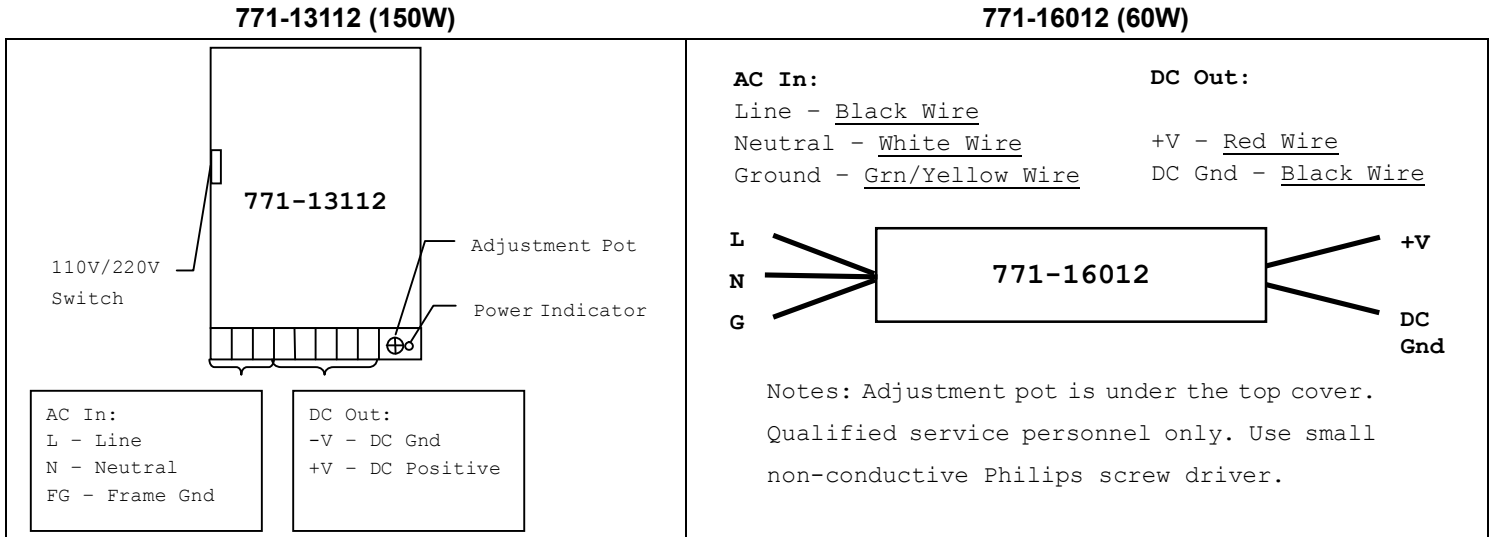
Part Number	Color	Light Output per Foot (Lumen)	Typical Wavelength or Color Temperature	LED View Angle	Input Voltage (VDC)	Power Consumption per Module (W)	Modules per foot	Expected Hours (Typical)
770-W0013	White	108	9,000K	50/110°	12	0.8	3	20,000
770-W0014	Warm White	60	3,000K	50/110°	12	0.8	3	20,000
770-R0013	Red	48	625nm	50/110°	12	0.5	3	50,000
770-E0013	Orange	54	605nm	50/110°	12	0.5	3	50,000
770-Y0013	Yellow	96	590nm	50/110°	12	0.5	3	50,000
770-G0013	Green	90	522nm	50/110°	12	1.0	3	50,000
770-B0013	Blue	30	473nm	50/110°	12	1.0	3	30,000
772-W0013	White	72	9,000K	50/110°	12	0.8	2	20,000
772-W0014	Warm White	40	3,000K	50/110°	12	0.8	2	20,000
772-R0013	Red	32	625nm	50/110°	12	0.5	2	50,000
772-E0013	Orange	36	605nm	50/110°	12	0.5	2	50,000
772-Y0013	Yellow	64	590nm	50/110°	12	0.5	2	50,000
772-G0013	Green	60	522nm	50/110°	12	1.0	2	50,000
772-B0013	Blue	20	473nm	50/110°	12	1.0	2	30,000

Power Supplies

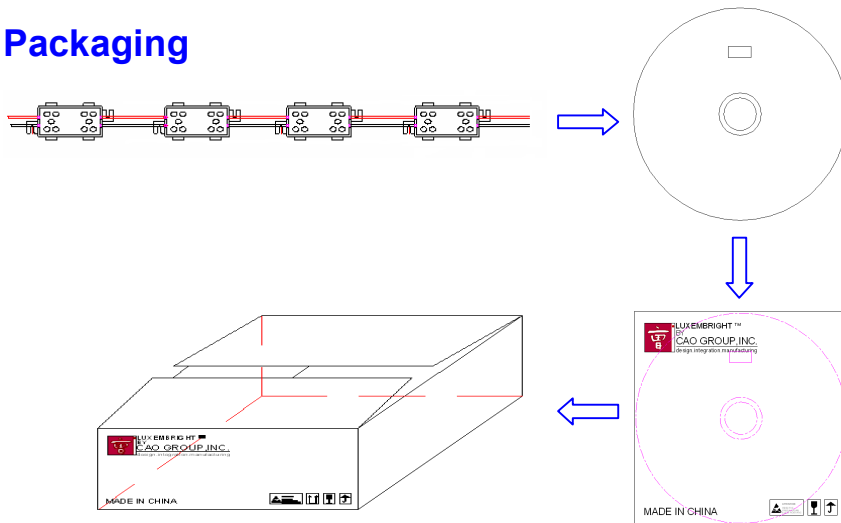
■ Specifications

P/N	Watt (W)	Input Voltage (VAC)	Max Input Current (A)	Output Voltage (VDC)	Max Output Current (A)
771-13112	150	90-264	4.0 A @ 100-120VAC	12	12.5
771-16012	60	90-264	1.5 A @ 100VAC	12	5.0

■ Typical Connections:



Packaging



Notes:

1. LuxemBright™ is packaged as 50 feet per reel and each reel is packaged in an individual carton box.
2. Each outer carton box contains 5 inner carton boxes.

www.caogroup.com

For product information and a complete list of sales representatives, please go to our website.

For technical assistance call:

US/Canada: +1 (877) 877-9778 or (801) 256-9282

Data subject to change.

Copyright reserved by CAO Group, Inc. No part of this datasheet may be reproduced in any form without the permission from the publisher.

Jan 07, 2008

SAL-CLT001 Rev.3