



The LuxemBright™ Star LED channel letter illumination system is a low voltage, highly efficient alternative to traditional neon and fluorescent lighting. It offers easy installation, durability, and a long life span for most channel letter illumination needs. Each module comes with 3 high brightness SMD LEDs, and the light of each LED is dispersed by a 160 degree lens to achieve a extremely homogeneous light distribution. The injection molded plastic housing allows for an IP65 environmental rating. When using LuxemBright products you will have the confidence knowing that your projects will shin bright and be maintenance free for many years to come.

FEATURES

- UL and CSA recognized
- Colored module for easy identification
- Colors available in white 9000K/6500K/3000K, red, orange, amber, green and blue
- Built in constant voltage circuit
- Uniform color and coverage
- Optimum heat management
- Can be cut at any point between modules
- 3M VHB Adhesive backing for easy placement

APPLICATIONS

- Channel letter lighting
- Accent or cove lighting
- Display box
- Backlighting
- RV and other 12VDC lighting applications
- Architectural lighting



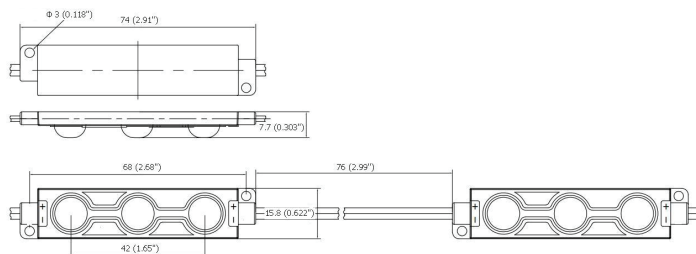


ELECTRICAL / OPTICAL CHARACTERISTICS

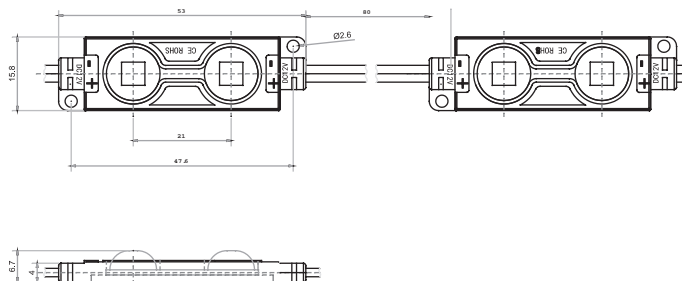
PART #	COLOR	CCT/λ	LM/FT.	MOD/FT.	CRI	INPUT VOLTAGE (VDC)	WATTS/ MOD.	WATTS/ FT.	VIEWING ANGLE	WNTY (YEARS)	DRAWING
777-W0023	WHITE 9000K	9,000K	200	2	>70	12	1.1	2.2	160°	5	A
777-W0025	WHITE 6500K	6500K	200	2	>70	12	1.1	2.2	160°	5	A
777-W0024	WHITE 3000K	3,000K	200	2	>70	12	1.1	2.2	160°	5	A
777-R0023	RED	625 NM	25	2	N/A	12	0.75	1.5	160°	5	A
777-B0023	BLUE	470 NM	15	2	N/A	12	0.75	1.5	160°	5	A
777-G0023	GREEN	525 NM	75	2	N/A	12	0.75	1.5	160°	5	A
777-Y0023	AMBER	590 NM	25	2	N/A	12	0.75	1.5	160°	5	A
777-E0023	ORANGE	605 NM	25	2	N/A	12	0.75	1.5	160°	5	A
777-W0033	WHITE 9000K	9,000K	200	3	>70	12	0.73	2.2	160°	5	B
777-W0035	WHITE 6500K	6500K	200	3	>70	12	0.73	2.2	160°	5	B
777-W0034	WHITE 3000K	3,000K	200	3	>70	12	0.73	2.2	160°	5	B
777-R0033	RED	625 NM	25	3	N/A	12	0.5	1.5	160°	5	B
777-B0033	BLUE	470 NM	15	3	N/A	12	0.5	1.5	160°	5	B
777-G0033	GREEN	525 NM	75	3	N/A	12	0.5	1.5	160°	5	B
777-Y0033	AMBER	590 NM	25	3	N/A	12	0.5	1.5	160°	5	B
777-E0033	ORANGE	605 NM	25	3	N/A	12	0.5	1.5	160°	5	B

MECHANICAL DIMENSIONS

DRAWING A

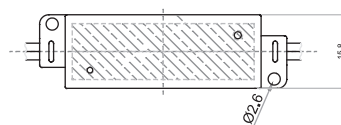


DRAWING B



Notes:

1. Connect "+" to DC positive and "-" to DC ground.
2. All dimensions are in mm (inch).
3. Dimensions without tolerances re for reference only. Connection wire are 20 AWG.



4628 West Skyhawk Drive, West Jordan, UT 84084-4501, USA
 Phone 877.236.4401 Fax 801.256.9287
www.LuxemBright.com



Send sign layouts to: layouts@caolighting.com