



Dynasty LED Flood Light

905 Series

905-100

905-100T

905-100HV

905-100HVT

FEATURES

- System Light Efficacy 120 LPW
- Flexible, Modular Design
- Multiple Choice of Optical Lenses
- Easy Installation & Maintenance
- IP66
- Five Years Warranty
- ETL, CE, RoHS, CB, WEEE

TYPICAL APPLICATIONS

- General Flood Lighting
- Corridor Lighting
- Security Lighting
- Roof Top Lighting

SPECIFICATIONS

PERFORMANCE

LED Chip	OSRAM
Lumen Output (IES)	12,000 lm
Power Consumption	100 W
Efficacy (IES)	120 lm/W
Efficacy (LED)	150 lm/W
Beam Angle	70/135°, 30/100°, 90°, 110°, 150°, 60/100°
Color Temperature	4500~5500K (2500~5500K Optional)
CRI	≥70
Lumen Maintenance	L70>100,000 hours (Calculated Using TM-21 Calculator)
Input Voltage	100-277 VAC (347/480 VAC Optional) Dimming Optional
Power Factor	0.95 minimum

ENVIRONMENTAL

IP Rating	IP66
Operating Temperature	-30 to 45°C (-22 to 113°F)
Storing Temperature	-40 to 80°C (-40 to 167°F)
Humidity	15% to 95% RH

PHYSICAL

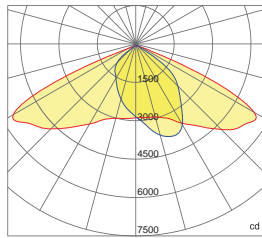
Dimensions (L×W×H)	330×365×224 mm (13.0×14.4×8.8 in) (U Bracket)
Weight	6.4 kg (14.1 lbs) (U Bracket)
Mounting Options	Universal Hanging Bracket Slip Fitter, Surface Mount
Fixture Material	Aluminum Alloy

WARRANTY

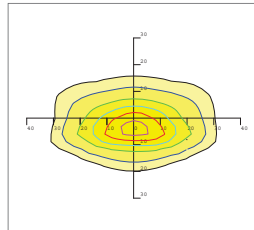
5 Years

Photometrics

70x135 DEGREE LENS (Forward 5°)



— 0.0~180.0
— 90.0~270.0

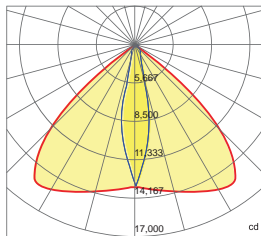


Mounting Height 10m, 0 Tilt,
20LUX-0.2LUX

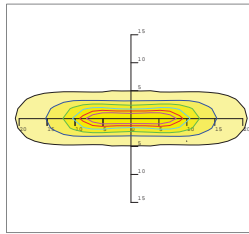
Illumination-70/135 Degree Beaming Angle		
Height	Rectangular Light Spot	LUX
2m	1.8x2.1m	715LUX
4m	3.6x4.2m	179LUX
6m	5.4x6.3m	80LUX
8m	7.2x8.3m	45LUX
10m	9.0x10.4m	29LUX

Beam Angle (50% max)	70x135 DEG
Luminous Flux (IES)	12,000 lm
Light Efficacy (IES)	120 lm/W
Cutoff Classification	Cutoff

30x100 DEGREE LENS



— 0.0~180.0
— 90.0~270.0

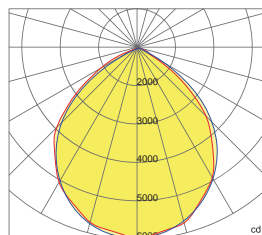


Mounting Height 10m, 0 Tilt,
50LUX-5LUX

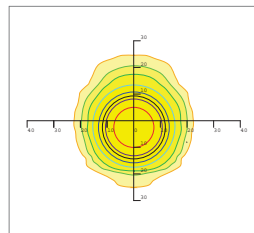
Illumination-30/100 Degree Beaming Angle		
Height	Rectangular Light Spot	LUX
2m	0.9x4.5m	3491LUX
4m	1.9x8.9m	873LUX
6m	2.8x13.4m	388LUX
8m	3.7x17.9m	218LUX
10m	4.7x22.3m	140LUX

Beam Angle (50% max)	30x100 DEG
Luminous Flux (IES)	12,000 lm
Light Efficacy (IES)	120 lm/W
Cutoff Classification	Cutoff

90 DEGREE LENS



— 0.0~180.0
— 90.0~270.0



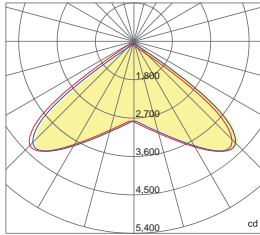
Mounting Height 10m, 0 Tilt,
20LUX-0.2LUX

Illumination-90 Degree Beaming Angle		
Height	Beam Diameter	LUX
2m	4.4m	1486LUX
4m	8.7x8.9m	372LUX
6m	13.1x13.3m	165LUX
8m	17.4x17.7m	93LUX
10m	21.8x22.2m	60LUX

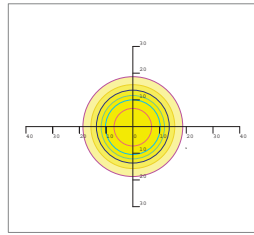
Beam Angle (50% max)	90 DEG
Luminous Flux (IES)	12,000 lm
Light Efficacy (IES)	120 lm/W
Cutoff Classification	Cutoff

Photometrics

110 DEGREE LENS



— 0.0~180.0
— 90.0~270.0

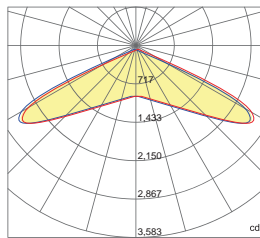


Mounting Height 10m, 0 Tilt,
20LUX-0.2LUX

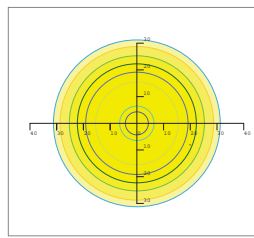
Illumination-110 Degree Beaming Angle		
Height	Rectangular Light Spot	LUX
2m	4.0 x 4.3m	685LUX
4m	8.0 x 8.6m	171LUX
6m	12.0 x 13.0m	76LUX
8m	15.9 x 17.3m	43LUX
10m	19.9 x 21.6m	27LUX

Beam Angle (50% max)	110 DEG
Luminous Flux (IES)	12,000 lm
Light Efficacy (IES)	120 lm/W
Cutoff Classification	Cutoff

150 DEGREE LENS



— 0.0~180.0
— 90.0~270.0

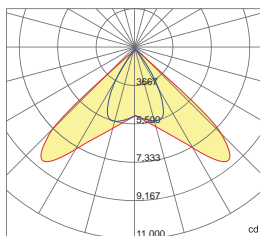


Mounting Height 10m, 0 Tilt,
20LUX-0.2LUX

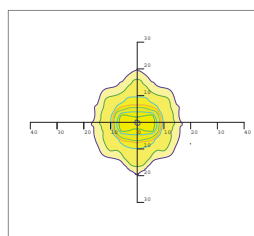
Illumination-150 Degree Beaming Angle		
Height	Rectangular Light Spot	LUX
2m	1.8 x 5.3m	334LUX
4m	3.7 x 10.7m	84LUX
6m	5.5 x 16.0m	37LUX
8m	7.4 x 21.4m	21LUX
10m	9.2 x 26.7m	13LUX

Beam Angle (50% max)	150 DEG
Luminous Flux (IES)	12,000 lm
Light Efficacy (IES)	120 lm/W
Cutoff Classification	Cutoff

60 x 100 DEGREE LENS



— 0.0~180.0
— 90.0~270.0



Mounting Height 10m, 0 Tilt,
20LUX-0.2LUX

Illumination-60x100 Degree Beaming Angle		
Height	Rectangular Light Spot	LUX
2m	1.5 x 2.2m	1165LUX
4m	2.9 x 4.4m	291LUX
6m	4.4 x 6.6m	130LUX
8m	5.8 x 8.7m	73LUX
10m	7.3 x 10.9m	47LUX

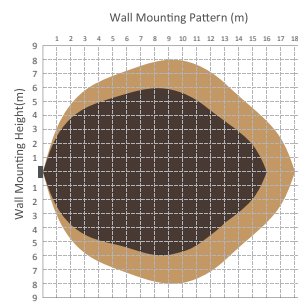
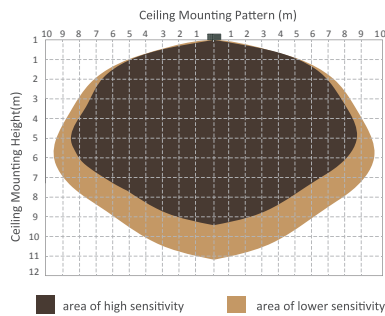
Beam Angle (50% max)	60x100 DEG
Luminous Flux (IES)	12,000 lm
Light Efficacy (IES)	120 lm/W
Cutoff Classification	Cutoff

Microwave Sensor & Dimmer Option



Technical Data			
Operating voltage	120-277V	Standby power	approx. 0.5W
Switched power	Max.capacitive load: 800W @277V, 400W@120V	Heating time	20s
Detection area	10/50/75/100%, can be customized	Sensor principle	Microwave motion
Hold time	5S/30S/1min/5min/10min/20min/30min, can be customized	Microwave frequency	5.8GHz+/-75MHz
Standby period	0s/10s/1min/5min/10min/30min/1h/+∞ can be customized	Microwave power	<0.2mw
Standby dimming level	10%/20%/30%/50% can be customized	Detection range	Max. (φxH):18m x 10m
Daylight threshold	2~50lux daylight/twilight/darkness, can be customized	Detection angle	30° ~ 150°
Operating temperature	-35°C ~ +70°C	Mounting height	Max.10m
IP rating	IP20, IP65(mounting in Hytronik special box)	Certificate	ETL, FCC

Detection Pattern



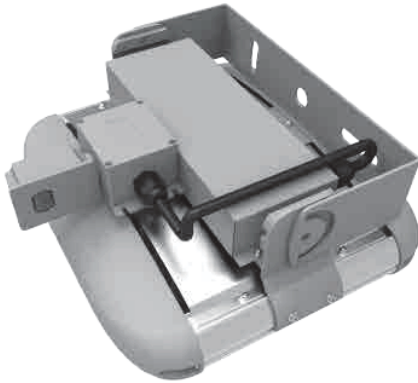
Setting

	Detection Area			Hold-time				Daylight Sensor			Stand-by Period (Corridor function)			Stand-by Dimming Level			
	1	2		1	2	3		1	2		1	2	3		1	2	
I	●	●	100%	●	●	●	5s	●	●	Disable	●	●	●	0s	●	●	10%
II	●	○	75%	●	●	○	30s	●	○	50lux	●	●	○	10s	●	○	20%
III	○	●	50%	●	○	●	1min	○	●	10lux	●	○	●	1min	○	●	30%
IV	○	○	10%	●	○	○	5min	○	○	2lux	●	○	●	5min	○	○	50%
V				○	●	●	10min				○	●	●	10min			
VI				○	●	○	20min				○	●	○	30min			
VII				○	○	○	30min				○	○	●	1h			
VIII				○	○	○					○	○	○	+∞			

- Detection area can be reduced by selecting the combination on the DIP switches to fit precisely for each specific application.
- Hold-time means the time period you would like to keep the lamp on 100% after the person has left the detection area.
- The daylight threshold can be set on DIP switches, to fit for particular application.
- This is the time period you would like to keep at the low light output level before it is completely switched off in the long absence of people. Note: 0 means on/off control; +∞ means 2 steps of dimming control, fixture never switch off.
- This is the dimmed low light output level you would like to have after the hold-time in the absence of people.

Photocell Option

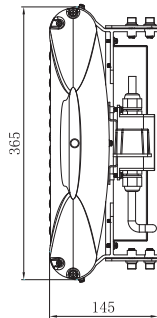
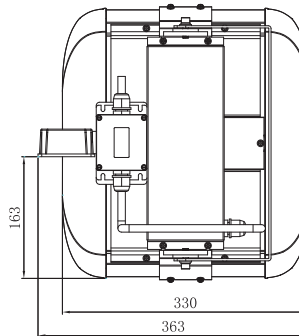
PT-20 Swivel Control



- Fixed
- Heavy-Duty Thermal Bi-Metal Switch
- UL Listed
- 30-45 Second Time Delay
- 2000 Watt Rating
- Fail Mode is ON

Features

Switch	SPST thermal bi-metallic
Fail Mode	ON (contacts normally closed)
Switch Lifetime	Exceeds 5,000 ON/OFF operations
Housing	Polycarbonate with UV resistant window
Lead Wire	6", #14 AWG, rated 105°C (all other models)
Nipple	1/2" pipe
Nut	1/2" pipe, zinc die-cast

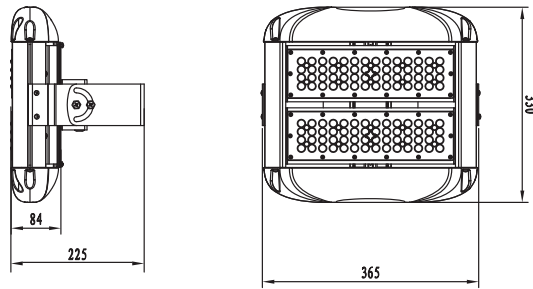


Specifications

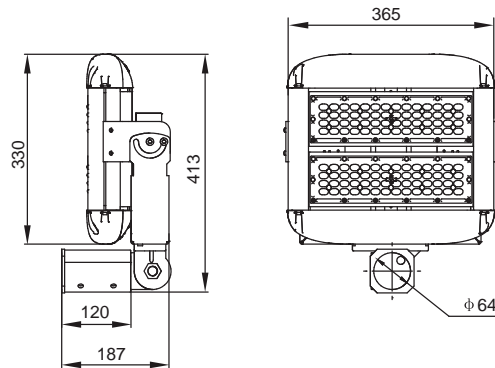
Temperature	- Minus 40°C to plus 65°C @ 96% RH
Load Rating	- 2000 Watt Tungsten 1900 VA
Light Sensor	- Cadmium Sulfide Cell
Base	- Fixed
Rated Volts	- 120/208/240/277 V
Range Volts	- 105-305 V
Rating Tungsten	- 2000 W
Rating Ballast	- 1900 VA
Turn ON	- 1.5 Fc
Physical	- Enclosure: designed to meet ANSI C136.10 - Power consumption: less than 0.9 Watts (avg.) at 120 VAC

Mounting Options

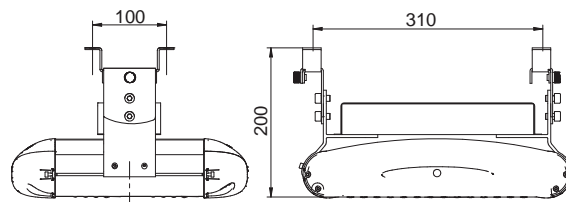
U Bracket, Long Axial Mount



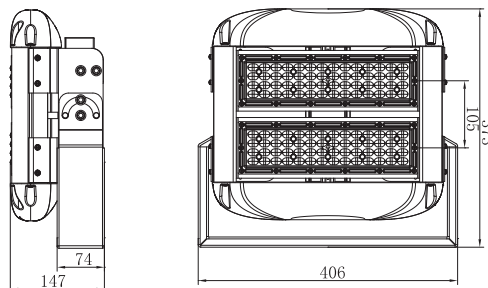
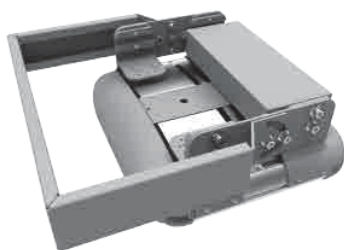
U Bracket Edge, Long Axial Mount + Slip Fitter



Surface Mount Bracket



U Bracket, Long Axial Mount-360°



CAO LIGHTING, INC.
LED through Innovation™

4628 West Skyhawk Drive, West Jordan, UT 84084-4501
Phone 877.236.4403 Fax 801.256.9287
customer@caolighting.com
www.caolighting.com

