



## Dynasty LED Linear High Bay

902 Series  
 902-50  
 902-50T  
 902-50HV  
 902-50HVT

### FEATURES

- Linear Design
- System Light Efficacy 105 LPW
- Easy Installation & Maintenance
- IP65/ IP30(PIR)
- Five Years Warranty
- ETL, CE, RoHS, CB, WEEE

### TYPICAL APPLICATIONS

- Warehouse/Manufacturing Facilities
- Convention Centers/Sporting Arenas
- Big-Box Retail Stores
- Cold Storage Facilities
- Gymnasiums

### SPECIFICATIONS

#### PERFORMANCE

LED Chip	OSRAM
Lumen Output (IES)	5,250 lm
Power Consumption	50 W
Efficacy (IES)	105 lm/W
Efficacy (LED)	131 lm/W
Beam Angle	70/135°, 30/100°, 90°,110°,150°, 60/100°
Color Temperature	4500~5500K (2500~5500K Optional)
CRI	≥80
Lumen Maintenance	L70>70,000 hours (Calculated Using TM-21 Calculator)
Input Voltage	100-277 VAC (347/480 VAC Optional) Dimming Optional
Power Factor	0.95 minimum

#### ENVIRONMENTAL

IP Rating	IP65/ IP30(PIR)
Operating Temperature	-30 to 45°C (-22 to 113°F)
Storing Temperature	-40 to 80°C (-40 to 167°F)
Humidity	15% to 95% RH

#### PHYSICAL

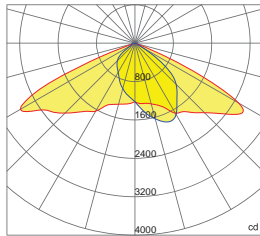
Dimensions (L×W×H)	355×159×114 mm (14.0×6.3×4.5 in) (Steel Cable)
Weight	2.4 kg (5.4 lbs) (Steel Cable)
Mounting Options	Chain Cable, Surface Mount Chain Mount and Surface Mount
Fixture Material	Aluminum Alloy

#### WARRANTY

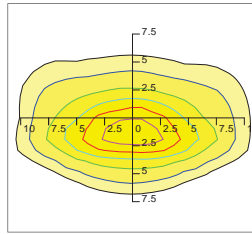
5 Years

Photometrics

70×135 DEGREE LENS (Forward 5°)



— 0.0~180.0  
— 90.0~270.0

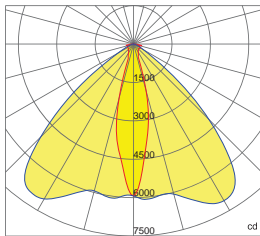


Mounting Hight 5m, 0 Tilt,  
50LUX-5LUX

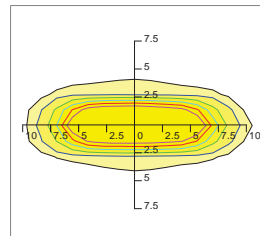
Illumination-70/135 Degree Beaming Angle		
Height	Rectangular Light Spot	LUX
4m	7 × 19m	60LUX
5m	9 × 24m	45LUX
6m	11 × 29m	33LUX
7m	13 × 34m	25LUX
8m	14 × 39m	20LUX

Beam Angle (50% max)	70×135 DEG
Field Angle (10%)	100×160 DEG
Luminous Flux (IES)	5,250 lm
Light Efficacy (IES)	105 lm/W
Cutoff Classification	Cutoff

30×100 DEGREE LENS



— 0.0~180.0  
— 90.0~270.0

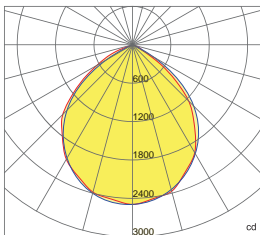


Mounting Hight 7m, 0 Tilt,  
50LUX-5LUX

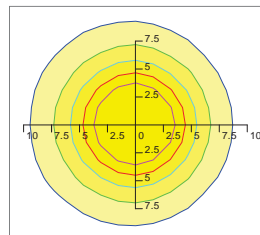
Illumination-30/100 Degree Beaming Angle		
Height	Rectangular Light Spot	LUX
5m	2 × 9m	168LUX
6m	3 × 11m	116LUX
7m	3 × 13m	87LUX
8m	4 × 15m	66LUX
9m	4 × 17m	52LUX

Beam Angle (50% max)	30×100 DEG
Field Angle (10%)	50×120 DEG
Luminous Flux (IES)	5,250 lm
Light Efficacy (IES)	105 lm/W
UGR	18/23
Cutoff Classification	Cutoff

90 DEGREE LENS



— 0.0~180.0  
— 90.0~270.0



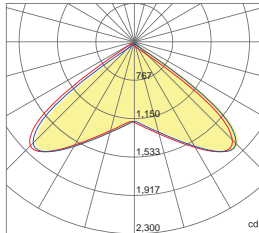
Mounting Hight 8m, 0 Tilt,  
50LUX-5LUX

Illumination-90 Degree Beaming Angle		
Height	Beam Diameter	LUX
4m	φ 12m	97LUX
5m	φ 14m	67LUX
6m	φ 19m	49LUX
7m	φ 23m	35LUX
8m	φ 24m	28LUX

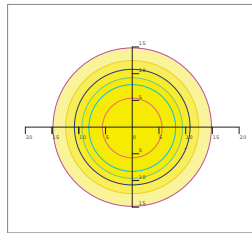
Beam Angle (50% max)	90 DEG
Field Angle (10%)	130 DEG
Luminous Flux (IES)	5,250 lm
Light Efficacy (IES)	105 lm/W
UGR	25
Cutoff Classification	Cutoff

Photometrics

110 DEGREE LENS



— 0.0~180.0  
— 90.0~270.0

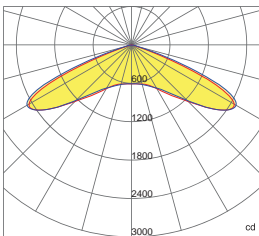


Mounting Height 10m, 0 Tilt,  
20LUX-0.2LUX

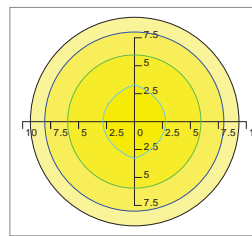
Height	Rectangular Light Spot	LUX
2m	4.0x4.3m	292LUX
4m	8.0x8.6m	73LUX
6m	12.0x13.0m	32LUX
8m	15.9x17.3m	18LUX
10m	19.9x21.6m	12LUX

Beam Angle (50% max)	110 DEG
Luminous Flux (IES)	5,250 lm
Light Efficacy (IES)	105 lm/W
Cutoff Classification	Cutoff

150 DEGREE LENS



— 0.0~180.0  
— 90.0~270.0

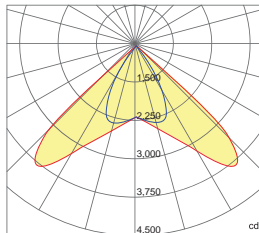


Mounting Height 5m, 0 Tilt,  
50LUX-5LUX

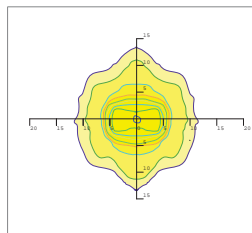
Height	Beam Diameter	LUX
4m	φ 15m	48LUX
5m	φ 16m	33LUX
6m	φ 22m	25LUX
7m	φ 26m	18LUX
8m	φ 29m	14LUX

Beam Angle (50% max)	150 DEG
Field Angle (10%)	160 DEG
Luminous Flux (IES)	5,250 lm
Light Efficacy (IES)	105 lm/W
UGR	27
Cutoff Classification	Cutoff

60 x 100 DEGREE LENS



— 0.0~180.0  
— 90.0~270.0

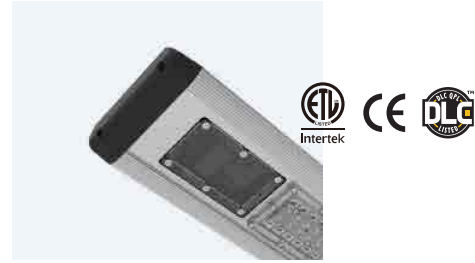


Mounting Height 10m, 0 Tilt,  
20LUX-0.2LUX

Height	Rectangular Light Spot	LUX
2m	1.5x2.2m	493LUX
4m	2.9x4.4m	123LUX
6m	4.4x6.6m	55LUX
8m	5.8x8.7m	31LUX
10m	7.3x10.9m	20LUX

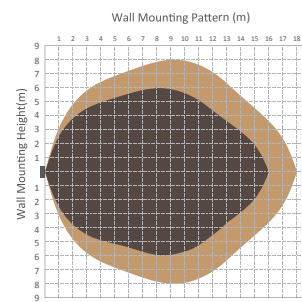
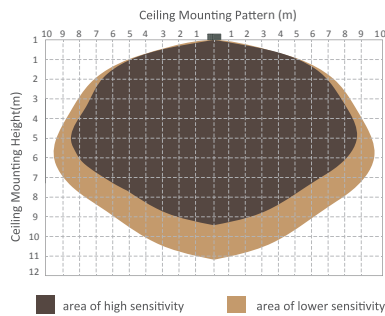
Beam Angle (50% max)	60x100 DEG
Luminous Flux (IES)	5,250 lm
Light Efficacy (IES)	105 lm/W
Cutoff Classification	Cutoff

# Microwave Sensor & Dimmer Option



Technical Data			
Operating voltage	120-277V	Standby power	approx. 0.5W
Switched power	Max.capacitive load: 800W @277V, 400W@120V	Warm time	20s
Detection area	10/50/75/100%, can be customized	Sensor principle	Microwave motion detector
Hold time	5S/30S/1min/5min/10min/20min/30min, can be customized	Microwave frequency	5.8GHz+/-75MHz
Standby period	0s/10s/1min/5min/10min/30min/1h/+∞ can be customized	Microwave power	<0.2mw
Standby dimming level	10%/20%/30%/50% can be customized	Detection range	Max. (φxH):18m x 10m
Daylight threshold	2~50lux daylight/twilight/darkness, can be customized	Detection angle	30° ~ 150°
Operating temperature	-35°C ~ +70°C	Mounting height	Max.10m
IP rating	IP20, IP65(mounting in Hytronik special box)	Certificate	ETL, FCC

## Detection Pattern

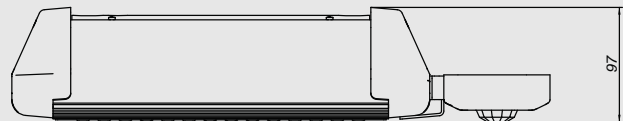
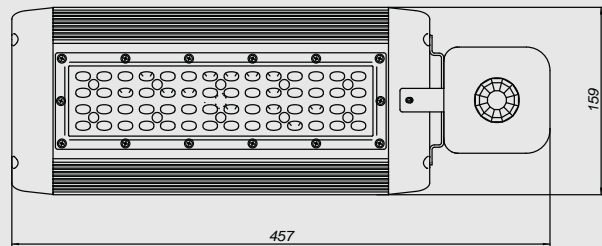
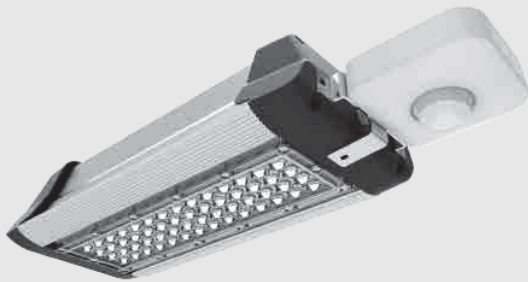


## Setting

	Detection Area			Hold-time				Daylight Sensor			Stand-by Period (Corridor function)			Stand-by Dimming Level			
	1	2		1	2	3		1	2		1	2	3	1	2		
I	●	●	100%	●	●	●	5s	●	●	Disable	●	●	●	0s	●	●	10%
II	●	○	75%	●	●	○	30s	●	○	50lux	●	●	○	10s	●	○	20%
III	○	●	50%	●	○	●	1min	○	●	10lux	●	○	●	1min	○	●	30%
IV	○	○	10%	●	○	○	5min	○	○	2lux	●	○	●	5min	○	○	50%
V				○	●	●	10min				○	●	●	10min			
VI				○	●	○	20min				○	●	○	30min			
VII				○	○	○	30min				○	○	●	1h			
VIII											○	○	○	+∞			

- Detection area can be reduced by selecting the combination on the DIP switches to fit precisely for each specific application.
- Hold-time means the time period you would like to keep the lamp on 100% after the person has left the detection area.
- The daylight threshold can be set on DIP switches, to fit for particular application.
- This is the time period you would like to keep at the low light output level before it is completely switched off in the long absence of people. Note: 0 means on/off control; +∞ means 2 steps of dimming control, fixture never switch off.
- This is the dimmed low light output level you would like to have after the hold-time in the absence of people.

# PIR Sensor Option



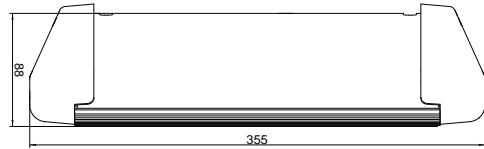
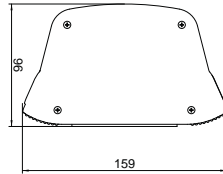
Input Voltage	AC 120-277 V, 60HZ
Load Requirement	800VA @ 120V AC Fluorescent Ballasts NO Min 1200VA @ 277V AC Fluorescent Ballasts NO Min
Load Horsepower	1/6HP
Time Delay Adjustment	Fixed 15 seconds to 30 minutes
Operating Temperature	32° to 131° F ( 0° to 55° C )
Humidity range	0%-90%RH, non-condensing
Coverage range	Up to 30 ft mounting / 360 Degrees
Terminal Line	Black-Hot, White-Neutral, Red-Load
Warranty	2 Years
IP Rating	IP 30
Sensor Type	IR Sensor



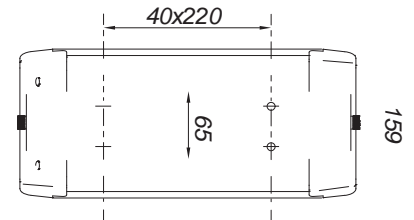
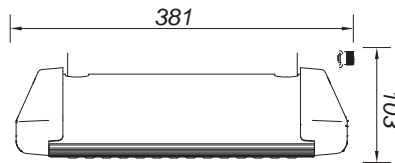
Mounting Options



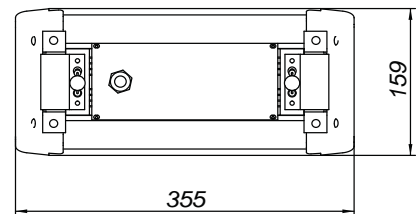
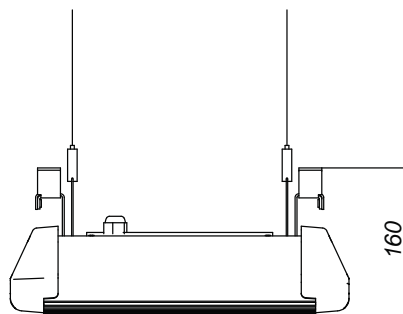
Chain Mount



Surface Mount



Chain Mount and Surface Mount



**CAO LIGHTING, INC.**  
LED through Innovation™

4628 West Skyhawk Drive, West Jordan, UT 84084-4501  
Phone 877.236.4403 Fax 801.256.9287  
customer@caolighting.com  
www.caolighting.com

