



**FlowVis®**  
Flow Meters

**A REVOLUTION IN RELIABLE FLOW  
MEASUREMENT**



**Know the Flow™**



## STAY AHEAD OF THE COMPETITION

Ingenious in concept and flawless in operation, FlowVis® has been revolutionizing the way pool owners and operators measure flow since its inception in 2012.

With more NSF-certified flow meters than any other brand, it's easy to see why FlowVis® is the pool & spa industry's flow meter of choice. Indeed, FlowVis® is the most accurate and reliable flow meter ever developed for pools, spas, fountains, and water features.

The patented FlowVis® flow meter is available in 1.5", 2", 2.5", 3", 4", 6" and 8" configurations, with additional models designed specifically for retrofit, safety, saline, and metric pipe applications.

The patented concept allows FlowVis® to be installed in close proximity to other plumbing fittings without consideration for orientation or excessive straight-pipe runs.

### UNRIVALED ACCURACY ACROSS THE ENTIRE MODEL RANGE



FV-C, FV-C-15



FV-3



FV-4

**NOTE:** Accuracy data for FV-6 and FV-8 models yet to be confirmed.

# A BETTER FLOW METER MEANS MORE SAVINGS

Installing a variable speed pump for energy savings makes complete sense, but the only way to know how to set the pump's speed is by knowing the flow rate. FlowVis® allows you to:

- Maximize the energy-saving potential
- Achieve efficient skimming
- Reduce chemical costs
- Maintain a clean pool
- Ensure heater efficiency
- Achieve precise and repeatable valve positioning for perfect water feature operation

It is essential to establish the required flow rate in order to achieve turnover requirements. Setting the flow rate too high will use more energy than required and setting it too low will result in a dirty pool. Examples of typical energy savings can be found at [www.h2flow.net](http://www.h2flow.net)

## DESIGNED WITH ACCURACY AND RELIABILITY IN MIND, FLOWVIS FLOW METERS INCLUDE THE FOLLOWING FEATURES:

KEY FEATURES	1.5", 2", 2.5" MODELS	3", 4" MODELS	6", 8" MODELS
Installation flexibility; installs horizontally, vertically, or even upside-down. No requirement for 15x straight pipe diameters	YES	YES	NO
Includes check valve functionality	YES	NO	NO
NSF 50 certified	FV-C, FV-C-S, FV-C-Saline	YES	Pending
Clear, easy-to-read scale in GPM or optional LPM with key velocity points (FPS)	YES	YES	YES
Typical installation time	10-minutes	20-minutes	20-minutes
Calibration required?	NO	NO	NO
Warranty	3-years	3-years	3-years
Manufactured in USA	YES	YES	YES
Design Life	15-years	15-years	15-years
Spring replacement	7-years	7-years	7-years
Unique design results in maintained accuracy even with entrained air caused by suction leaks	YES	YES	YES
Saddle-clamp required?	NO	NO	YES



# THE FLOWVIS®

## PRODUCT LINE



### FV-C FOR 1.5" PIPE

Complete 1.5" valve body with check valve, GPM scale and velocity indicator. Models also available for DN40 pipe diameter and with LPM or M<sup>3</sup>/h scale.

### FV-C FOR 2"/2.5" PIPE

NSF 50 certified, complete 2"/2.5" valve body with check valve, GPM scale and velocity indicator. Models also available for DN50/65 pipe diameter and with LPM or M<sup>3</sup>/h scale.

### FV-3 FOR 3" PIPE

NSF 50 certified, 3" tee with GPM scale and velocity indicator. Models also available for DN80 pipe diameter and with LPM or M<sup>3</sup>/h scale.

### FV-4 FOR 4" PIPE

NSF 50 certified, 4" tee with GPM scale and velocity indicator. Models also available for DN100 pipe diameter and with LPM or M<sup>3</sup>/h scale.

Say 'hello' to the family of FlowVis® flow meters. With more NSF 50 certified models and a higher average accuracy than any other brand of flow meter, you'll be glad we made the introduction!

New for 2020, we're bringing you our most robust models yet; units for 6" and 8" pipe and the all-new, incredibly accurate, FlowVis® Digital (separate literature for FlowVis Digital can be found at [h2flow.net](http://h2flow.net)).



---

### FV-6 FOR 6" PIPE

6" tee with GPM scale and velocity indicator. Models also available for DN150 pipe diameter and with LPM or M<sup>3</sup>/h scale.

---

### FV-8 FOR 8" PIPE

8" tee with GPM scale and velocity indicator. Models also available for DN200 pipe diameter and with LPM or M<sup>3</sup>/h scale.

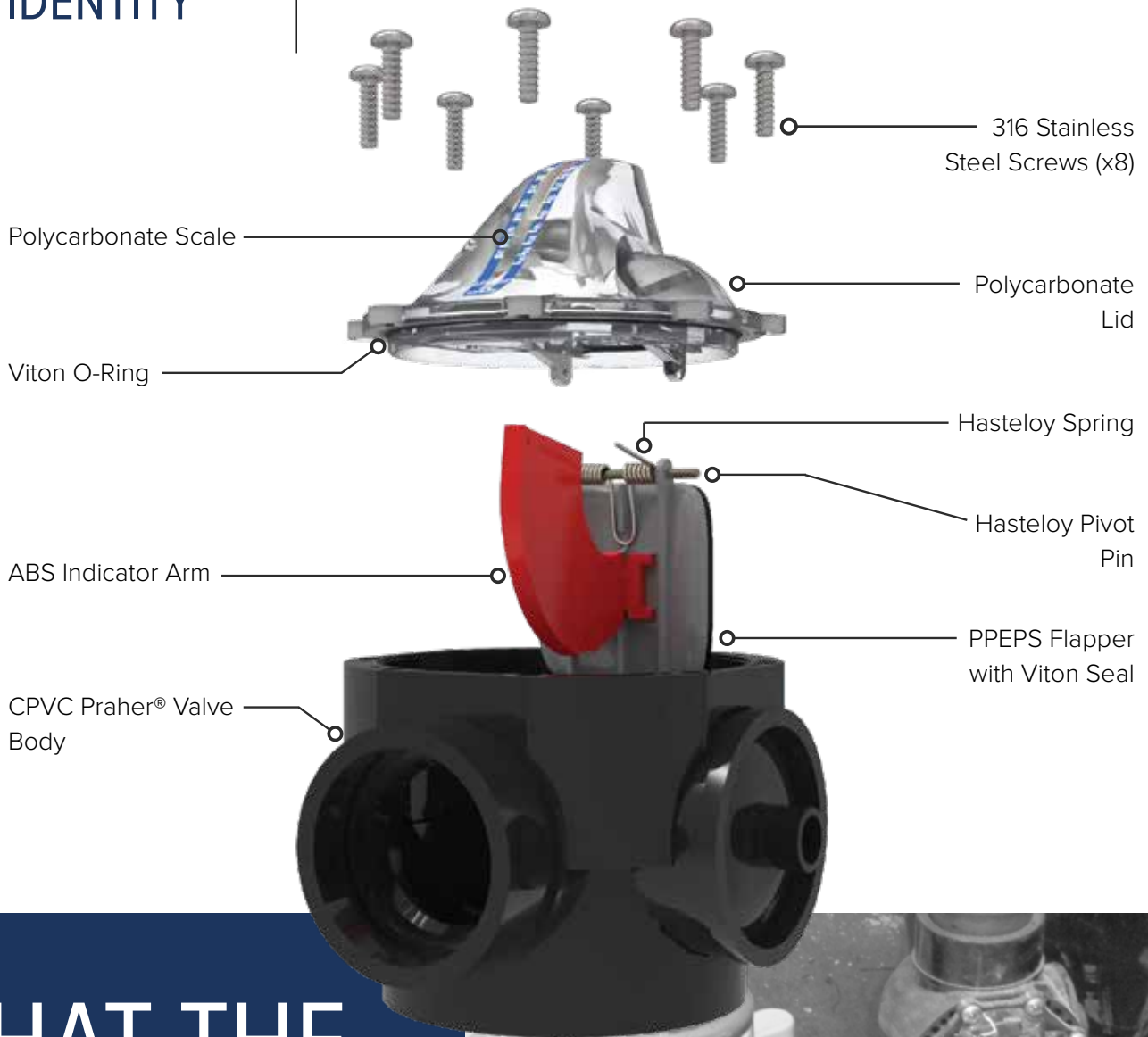
---

### FLOWVIS® DIGITAL

Digital upgrade for all new and existing FlowVis installations. See separate product brochure on [h2flow.net](http://h2flow.net)

**NOT PICTURED:** FV-C-S, FV-C-Saline, FV-J-R, FV-J-R-15, FV-P-R, FV-P-R-15, FV-H-R, FV-P-R-15, all models that are specific to metric pipe sizes or models that utilize an LPM or M<sup>3</sup>/h scale.

OUR QUALITY IS  
OUR IDENTITY



# WHAT THE PRO'S SAY

JOIN THE THOUSANDS OF POOL  
PROS WORLDWIDE THAT ARE  
SEEING THE BENEFITS OF USING  
FLOWVIS® FLOW METERS.



**I ABSOLUTELY LOVE THAT I GET A VERY ACCURATE FLOW READING ANYWHERE I NEED TO PLACE IT IN THE PUMP ROOM".**

Michael Geyer  
President, Exceptional Water Systems, Mesa, AZ



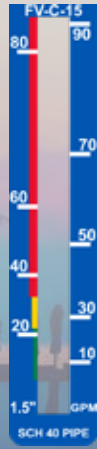
**FINALLY! A RELIABLE FLOW METER FOR POOLS. CHECK OUT FLOWVIS®".**

Wes Burdine  
Owner, Aquatic Energy Consulting, Kingsport, TN



# VELOCITY INDICATION / FPS

All FlowVis® models feature a velocity indicator on the scale. This indication of velocity appears in green, yellow, and red bars along-side the GPM, LPM, or M<sup>3</sup>/h readings, and displays flow in feet per second (FPS).



**FPS INDICATED IN GREEN** ≤5 FPS

**FPS INDICATED IN YELLOW** 5-9 FPS

**FPS INDICATED IN RED** ≥9 FPS

## SPECIFICATIONS

	1.5", 2", 2.5"	3"	4"	6"	8"
<b>FLOW RANGE (GPM)</b>	10-90 (1.5") / 10-110 (2" / 2.5")	90-220	160-300	200-1000*	300-1800*
<b>FLOW RANGE (LPM)</b>	38-341 (1.5") / 38-416 (2" / 2.5")	341-833	606-1136	757-3785*	1136-6814*
<b>VELOCITY INDICATION</b>	5, 7, 9 FPS	5, 7, 9 FPS	5, 7, 9 FPS	5, 7, 9 FPS	5, 7, 9 FPS
<b>WORKING PRESSURE</b>	50 PSI	50 PSI	50 PSI	50 PSI	50 PSI
<b>HEAD LOSS</b>	Refer to head loss data on <a href="http://www.h2flow.net">www.h2flow.net</a>				
<b>STRAIGHT PIPE BEFORE</b>	0"	0" (L3) / 60" (L1)	0" (L3) / 80" (L1)	30"*	40"*
<b>STRAIGHT PIPE AFTER</b>	0"	0" (L3) / 60" (L1)	0" (L3) / 80" (L1)	0"*	0"*
<b>AVERAGE ACCURACY</b>	97.9%	98.15%	98.7%	TBC*	TBC*

\*To be confirmed

## MORE PRODUCTS FROM H2FLOW



### FLOWVIS® DIGITAL

Fully-featured, >98% accurate digital version of the FlowVis® flow meter.



### ECO-FLOW®-C AQUATIC AC DRIVE

Premium Variable Frequency Drive developed specifically for the commercial pool market.



### ECO-FLOW®-F AQUATIC AC DRIVE

Premium Variable Frequency Drive developed specifically for the commercial fountain market.



### PSP20 ANTI-ENTRAPMENT DEVICE

The industry professional's anti-entrapment solution of choice.

## THE NEXT LEVEL IN FLOW METER TECHNOLOGY

While new analog FlowVis® models continue to be developed and improvements are continually being made to existing models, it's time to announce the next level in flow meter technology...

Introducing FlowVis® Digital; the industry's most accurate and reliable digital flow meter.

Learn more at [www.h2flow.net](http://www.h2flow.net)

TEL: 888.635.0296 • [www.h2flow.net](http://www.h2flow.net)

FLOW METERS • AQUATIC AC DRIVES • ANTI-ENTRAPMENT DEVICES

©2020 H2flow Controls, Inc. All rights reserved. All H2flow trademarks are owned by H2flow Controls, Inc. Any use of the H2flow Controls, Inc., FlowVis or FlowVis Digital names, H2flow logo, or FlowVis product images is strictly prohibited without the expressed written consent of H2flow Controls, Inc. and its officials.

Because H2flow continues to make changes to its products and services, H2flow reserves the right to change specifications and product features without notice. Please contact H2flow or visit [www.h2flow.net](http://www.h2flow.net) for the most up-to-date versions of our product literature. H2flow is an equal opportunity employer.