



NEC

Professional Installation Projectors

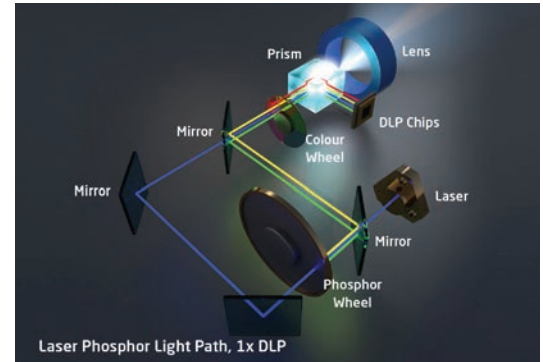
PX SERIES



Powerful installation projectors with laser-phosphor light source supports new, demanding projection applications.

Laser Light Module

- 20,000-plus hours of virtually maintenance-free operation
- High-brightness, lower power consumption enhances applications such as retail, digital signage and theme parks
- Ability to control brightness creating a stable image over longer time periods
- Images appear immediately after power on due to instantaneous start up of the laser



Integrated and Powerful

- Project uncompressed FHD video with integrated HDBaseT
- High performance video processing/scaling creates life-like images
- Integrated software applications such as DisplayNote®, Crestron Roomview, AMX Beacon and PJ Link allow for complete interactivity and control
- Tile Matrix enables 4Kx2K resolution

Flexible

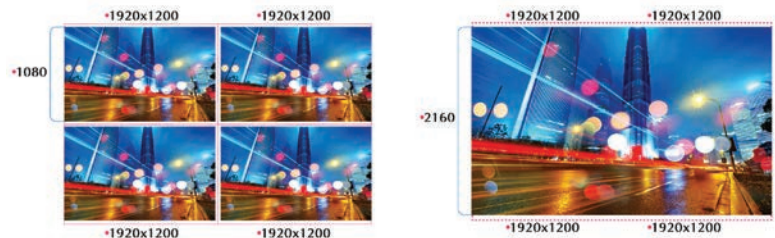
- Enjoy greater installation flexibility with a complete line of powered optional bayonet style lenses (8) for quick and easy exchange. (including the NP39ML-4K UST lens). Lens throw distances range from 2.1 to 179.8 ft
- Tilt-free installation capabilities make these projector ideal for almost any install environment, including portrait orientation
- +50%/-30% vertical lens shift and +20%/-10% horizontal lens shift capabilities make alignment easy



Screen Splitter

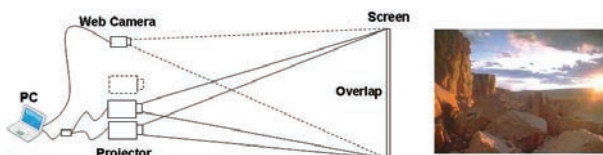
NEC is committed to bringing the latest and greatest innovation to projectors. Multi-display capabilities and TileMatrix technologies are integrated into the new PX series projectors. This processing is all done internally and therefore eliminates the additional hardware typically required to produce a beautiful 4K resolution image.

Screen Splitter (Multi Display) by Daisy Chain



Stacking correction

The industry's first built-in stacking correction capabilities (up to four projectors) allows the projectors to boost an image's brightness up to 40,000 lumens, which is ideal for larger-sized screens and environments with heavy ambient light. This feature also prevents the complete loss of an image, which can happen when using only one projector.



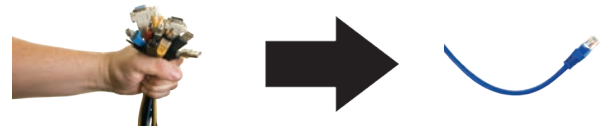
Edge blending

This function seamlessly blends multiple projected images to display a single high-resolution image.



Built-In HDBaseT Support

Simplify your installations with HDBaseT. Optimized for video applications and supporting uncompressed full HD digital video, audio, ethernet, power and various control signals. With only a single cable (up to 100m) to run, infrastructure and labor costs are reduced, installations are significantly easier, and there is no cable clutter to manage. With uncompressed HD video support, images have never been more stunning. What's more, control signals are contained in the same cable.



Remote control

Wired and wireless backlit remote allows you to adjust for complete control of the projectors menu structure in a well lit or dark environment. Direct controls such as lamp mode, aspect ratio, volume and input selection eliminates multiple button pushes.



DisplayPort

This input provides PX Series models with expanded connectivity with advanced technology.



Wall color correction presets

These provide for adaptive color tone correction to display properly on non-white surfaces.


On a green wall...

BEFORE auto wall correction

AFTER auto wall correction


Cornerstone

Enhanced keystone correction allows for horizontal, vertical and diagonal image correction for aligned images even when the projector is set up at an angle to the screen.



3D

When combined with active shutter glasses and 3D emitter, the PX Series Projectors create 3D images from a computer or Blu-ray player. The PX Series utilize the 3D sync line output from the projector to connect to the 3D emitter. Optional 3D glasses and emitters from XPAND are available from NEC.



Geometric Correction

Projecting an image isn't confined to a standard flat screen or wall with the NEC PX Series. Geometric correction allows these models to project an image on spheres, cylinders, corner angles and many more non-standard surfaces.

Vertical cylindrical convex screen


Horizontal cylindrical concave screen

Vertical cylindrical concave screen

Corner

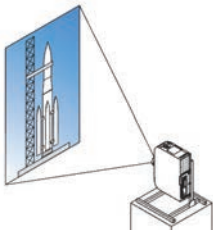
Tilt-free

The projector can be rotated freely (360°) to orient the image depending on the installation requirements



Portrait mode

Allows the projector to be rotated (and screen if necessary) to a vertical alignment so that portrait content can be viewed without black bars on the side when landscape mode is used.



UNIQUE FEATURES

3D Reform™ allows you to square the image by adjusting horizontally, vertically or diagonally when the projector cannot be placed parallel or perpendicular to the screen

Advanced AccuBlend™ ensures detailed images when non-native resolution sources are connected to the projector

AutoSense™ automatically syncs with any computer signal and features one-touch image optimization

64-step image magnification with location control

Discreet source keys for source selection

Remote diagnostics enable the user to monitor and make adjustments to the projector remotely

Built-in HTTP page for control and monitoring over a LAN network. Email notification of error messages or lamp end-of-life can be sent to remote locations.

WARRANTY

Registered owners receive a five (5) years or 20,000 hours (whichever comes first) parts and labor warranty including InstaCare next business day exchange.

IN THE BOX

Remote control, batteries, power cord, user's manual on CD-ROM, quick start guide, product registration card.

ACCESSORIES

NC1100CM	Ceiling mount
RMT-PJ35	Replacement remote control
NP01PW1	Power cable
RGBCBL-PJPX	RGB cable
Optional Lenses	NP16FL, NP17ZL, NP18ZL, NP19ZL, NP20ZL, NP21ZL, NP31ZL, NP39ML
SB-01HC	HD/SS-SDI input card
SB-04HC	3G/HD/SD-SDI input Card
XPAND X105-RF-1	3D Glasses
XPAND AD025-RF-X1	RF Emitter
N8000-8830	NEC OPS PC with Intel Core i5, 320GB Hard Drive, Windows Embedded Standard 7
N8000-8822	NEC OPS PC with Intel Celeron, 320GB Hard Drive, Windows Embedded Standard 7
ADVEXON1-I	Extends term of InstaCare service program to 2 years
ADVEXON2-I	Extends term of InstaCare service program to 3 years

ORDERING MODEL NUMBERS

NP-PX803UL-BK
 NP-PX803UL-WH
 NP-PX1004UL-BK
 NP-PX1004UL-WH



		PX803UL	PX1004UL	
Display Technology		0.67" DMD		
Light Output (lumens)		8000 normal / Eco = variable		
Resolution	Native	WUXGA 1920 x 1200		
	Maximum	4K 4096 x 2160		
Contrast Ratio (up to)		10,000:1 with dynamic contrast		
Lamp Life (up to)		20,000 hours		
Screen Size (diagonal)		30 to 350 in. / 0.76 to 8.89m		
Throw Ratio	NP39ML	0.38:1		
	NP31ZL	0.75 - 0.93:1		
	NP16FL	0.76:1		
	NP17ZL	1.25 - 1.79:1		
	NP18ZL	1.73 - 2.27:1		
	NP19ZL	2.22 - 3.67:1		
	NP20ZL	3.58 - 5.38:1		
Projection Distance		2.1 to 179.8 ft. / 0.64 to 54.8m		
Projection Angle		2.1 to 19.1° tele / 3.3 to 24.0° wide		
Lens	Zoom	Motorized		
		Zoom Ratio	NP39ML	-
			NP31ZL	1.25:1
			NP16FL	-
			NP17ZL	1.41:1
			NP18ZL	1.3:1
			NP19ZL	1.65:1
	NP20ZL		1.5:1	
	Focus	NP21ZL	1.55:1	
		Motorized		
		NP39ML	-	
		NP31ZL	F=1.96 to 2.3, f=11.3 to 14.1mm	
		NP16FL	F=1.85, f=11.6mm	
NP17ZL		F=1.85 to 2.5, f=18.7 to 26.5mm		
Shift	NP18ZL	F=1.64 to 1.86, f=25.7 to 33.7mm		
	NP19ZL	F=1.86 to 2.48, f=32.9 to 54.2mm		
	NP20ZL	F=1.85 to 2.4, f=52.8 to 79.1mm		
	NP21ZL	F=1.85 to 2.48, f=78.5 to 121.9mm		
	Motorized +50%/-30% vertical, +20%/-10% horizontal			
	Keystone Correction		+/- 40° horizontal, +/- 40° vertical	
Synchronization Range	Horizontal	Analog: 15-100kHz, Digital: 15-153kHz		
	Vertical	Analog: 48-120Hz, Digital: 24-120Hz		
Supported Video Standards		NTSC, NTSC4.43, PAL, PAL-60, PAL-M, PAL-N, SECAM		
SD/HD Video Signal Compatibility		1080p, 1080i, 720p, 576p, 576i, 480p, 480i		
PC Signal Compatibility		VGA, SVGA, XGA, SXGA, SXGA+, UXGA, WUXGA		
Macintosh Compatibility		Yes		
Input/Output Terminals	RGB1 (analog)	VGA 15 pin D-sub, Component video using ADP-CV1E adapter		
	RGB2 (analog)	5-BNC		
	RGB3 (digital)	HDMI (V1.4) w/HDCP		
	RGB4 (digital)	DisplayPort w/HDCP		
	RGB5 (digital)	HDBaseT		
	Option Slot	OPS		
3D Sync Line		HDMI (V1.4) w/HDCP		
External Control		3Pin D		
Sync Compatibility		RS-232, IR, HDBaseT, Stereo Mini , RJ-45		
Power Requirements		Separate Sync / Composite Sync / Sync on G		
Input Current		100 - 240V AC, 50/60Hz		
Power Consumption	(ECO off/ECO Mode/ Standby/Standby-Power Saving)	4.6A - 9.4A	5.2A - 11.6A	
		874W/695W/4.3W/0.18W	1220W/980W/4.3W/0.18W	
Installation Orientation		Floor/Front, Floor/Rear, Ceiling/Front, Ceiling/Rear		
Dimensions (WxDxH)		19.7 x 22.8 x 8.5 in. / 500 x 583 x 216mm		
Net Weight		61.7 lbs. / 28.0 kg		
Fan Noise		40 dB normal / 35 dB eco		
Regulations		63.9 lbs. / 29.0 kg	42 dB normal / 37 dB eco	
Operating Temperature		USA: UL/UL60950-1, Laser + Lamp (IEC60825-1 + IEC62471), FCC Part15 Class A Canada: CUL/UL60950-1, Laser + Lamp (IEC60825-1 + IEC62471), ICES-003 Class A		
Humidity		USA: UL/UL60950-1, Laser + Lamp (IEC60825-1 + IEC62471), FCC Part15 Class A Canada: CUL/UL60950-1, Laser + Lamp (IEC60825-1 + IEC62471), ICES-003 Class A		
Storage		-14° - 122°F / -10° - 50°C		
		20-80% non-condensing		
		-14° - 122°F / -10° - 50°C		

* Lens does not ship with the projector. Additional accessories are available, including screens, carts, mount accessories and replacement cables. Visit www.necdisplay.com for details.



HDMI, the HDMI Logo and High-Definition Multimedia Interface are trademarks or registered trademarks of HDMI Licensing LLC. All other brand or product names are trademarks or registered trademarks of their respective holders. Product specifications subject to change.