

NOVA VISION NY

LED Video Wall - SMART DFS Series

WALL MOUNTING INSTALLATION INSTRUCTIONS



WWW.NOVAVISIONNY.NET



up and down connection



Seamless connection

Cabinet details and features



Fast lock and latch



Locking effect picture



Power Cable



Signal Port

Cabinet details and features

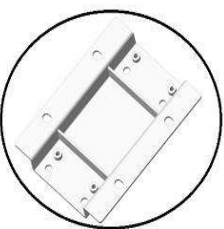
Preparation of materials for wall-mounted installation



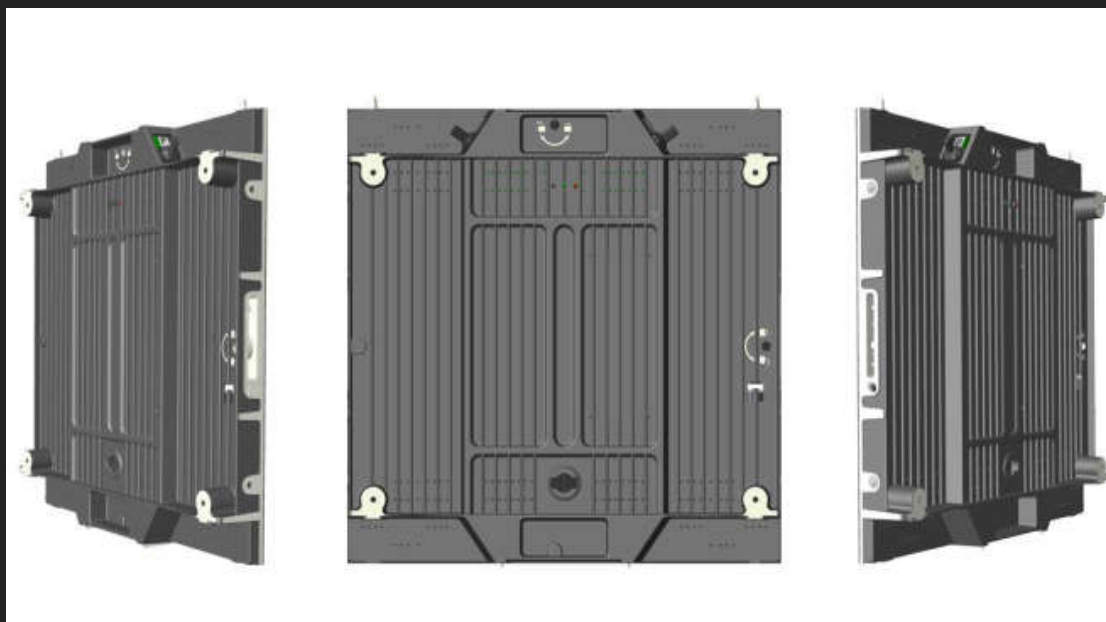
Connect
Plate



Photovoltaic
Bracket



Cabinet
Connect
Plate



DFS backside photo



M10*20

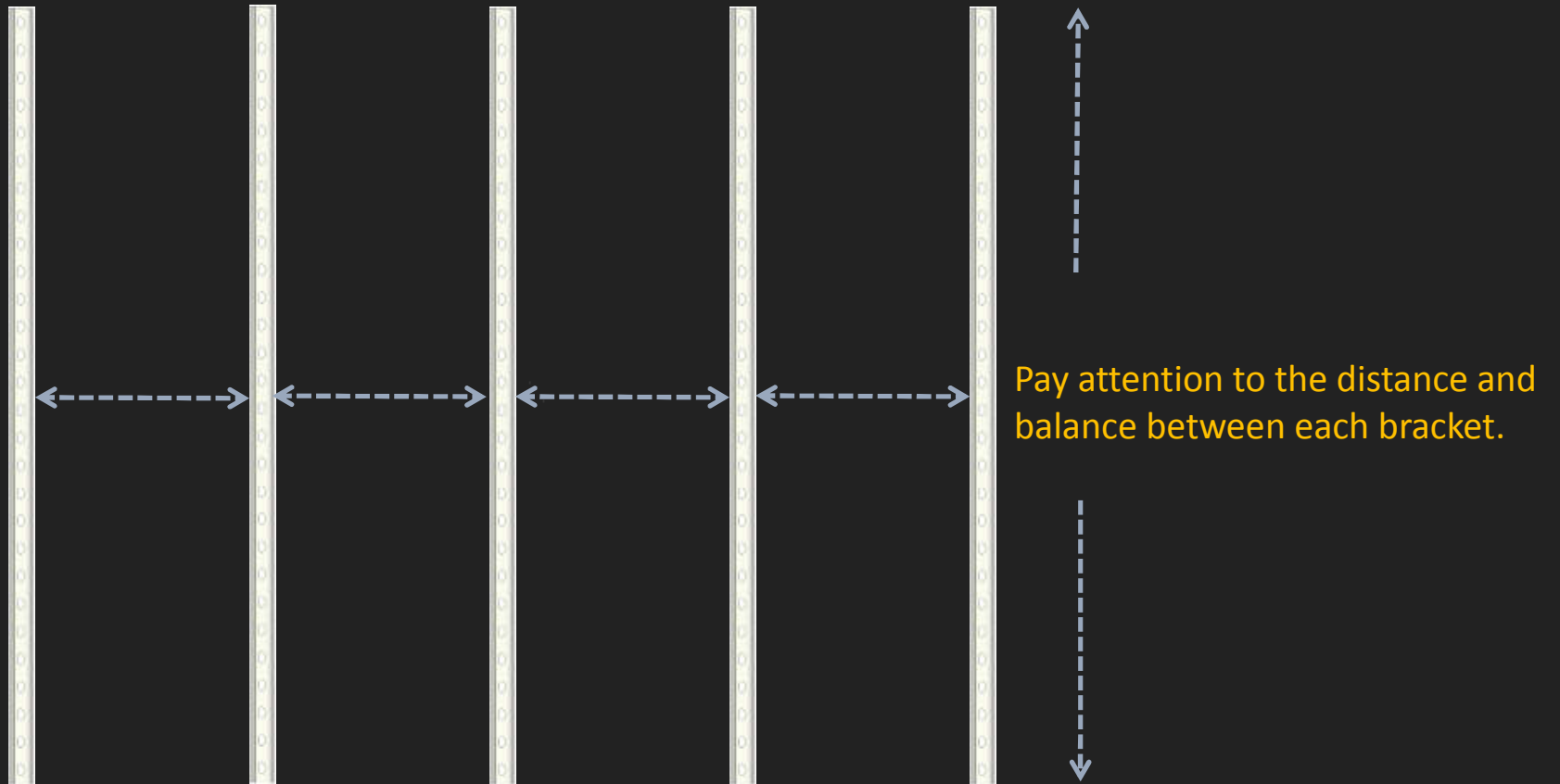


M6*20



M8*50/60
Expansion screw

For example: Building a display with 4m width x 4m height,
needs to install the photovoltaic bracket firstly



Install the photovoltaic bracket according to the site



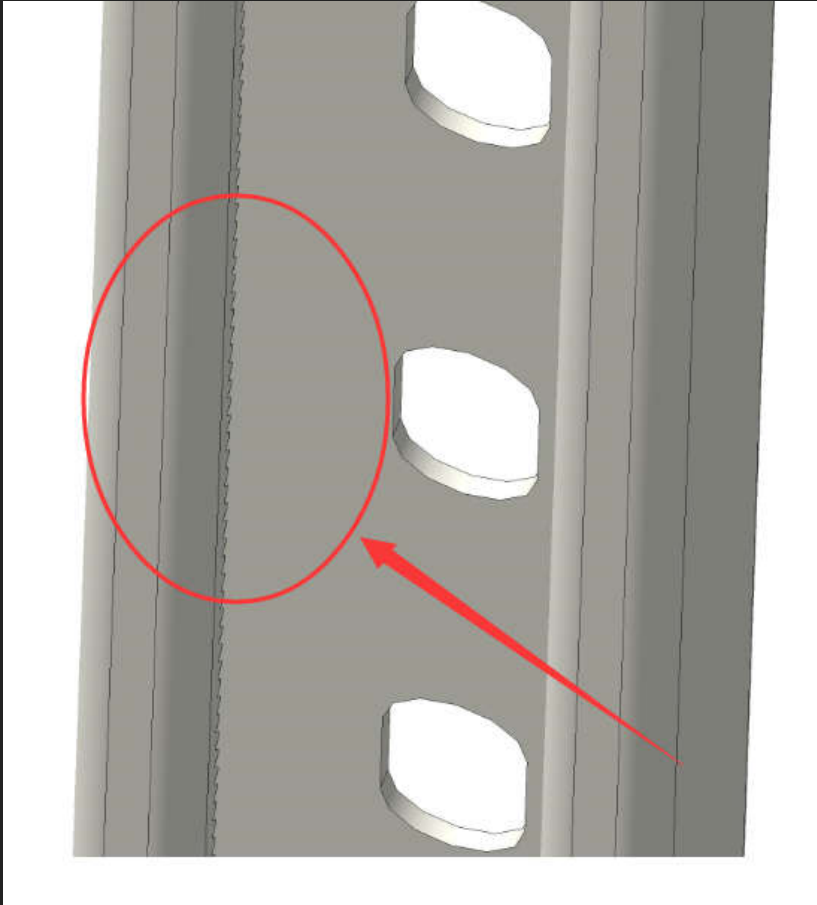
M8*50/60

Use
M8*50/60 expansion
screw

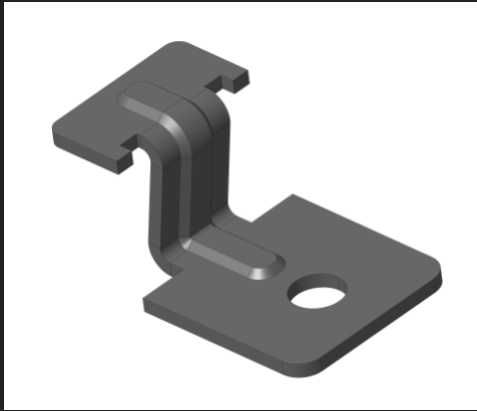
Choose according to
the site



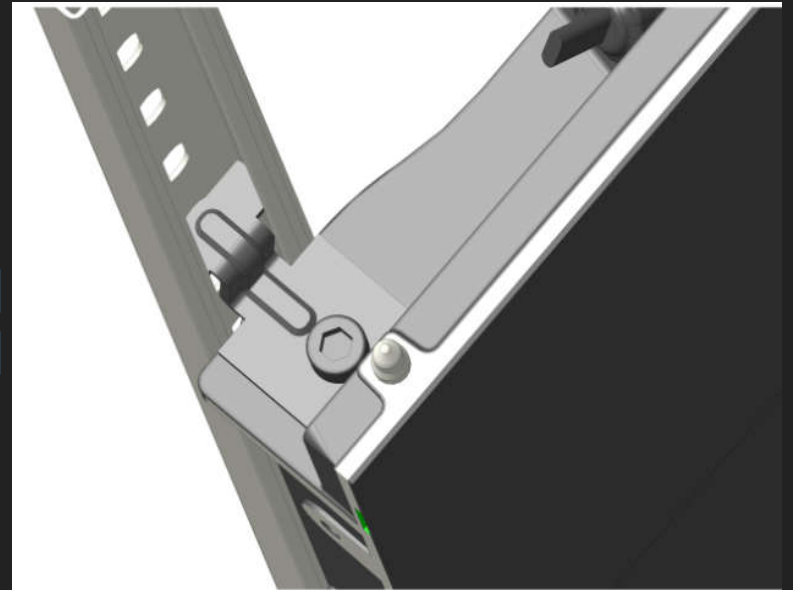
Install 5pcs photovoltaic bracket with expansion screws as
shown above



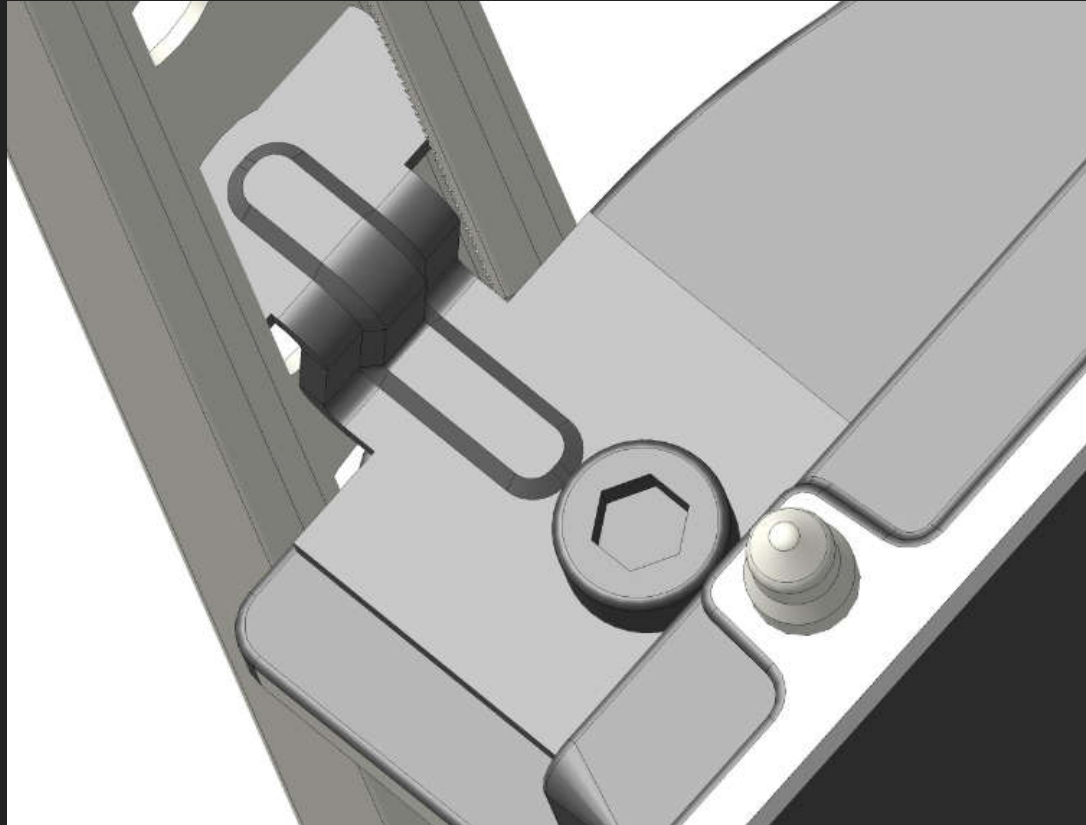
The inside of the photovoltaic bracket is a tooth-like design. Insert the Z-type connection plate inside of the bracket, the cabinet will be locked tightly through the mechanical principles.



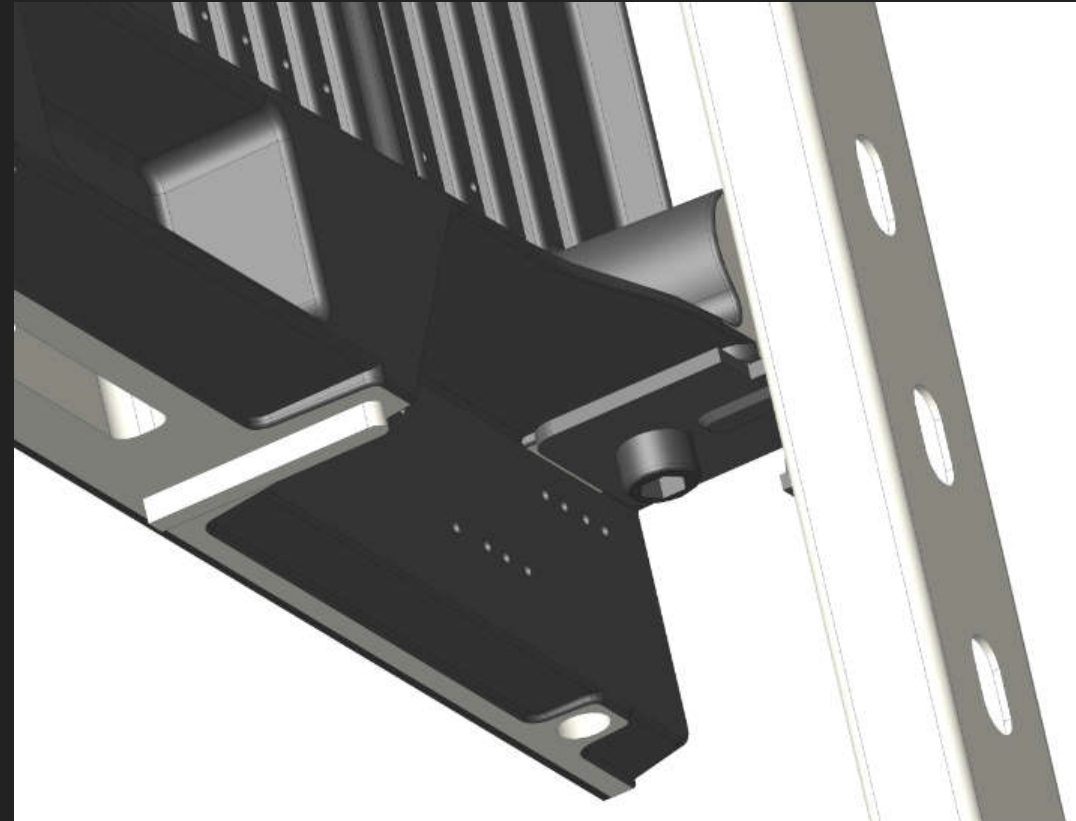
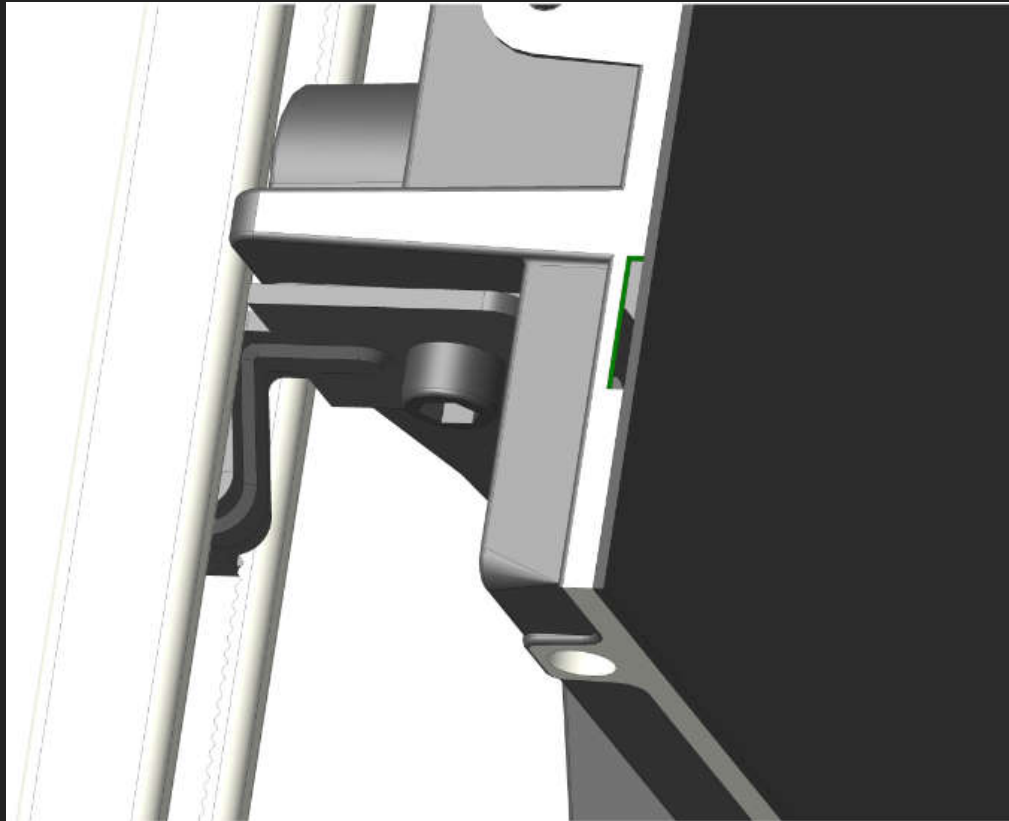
M10*20



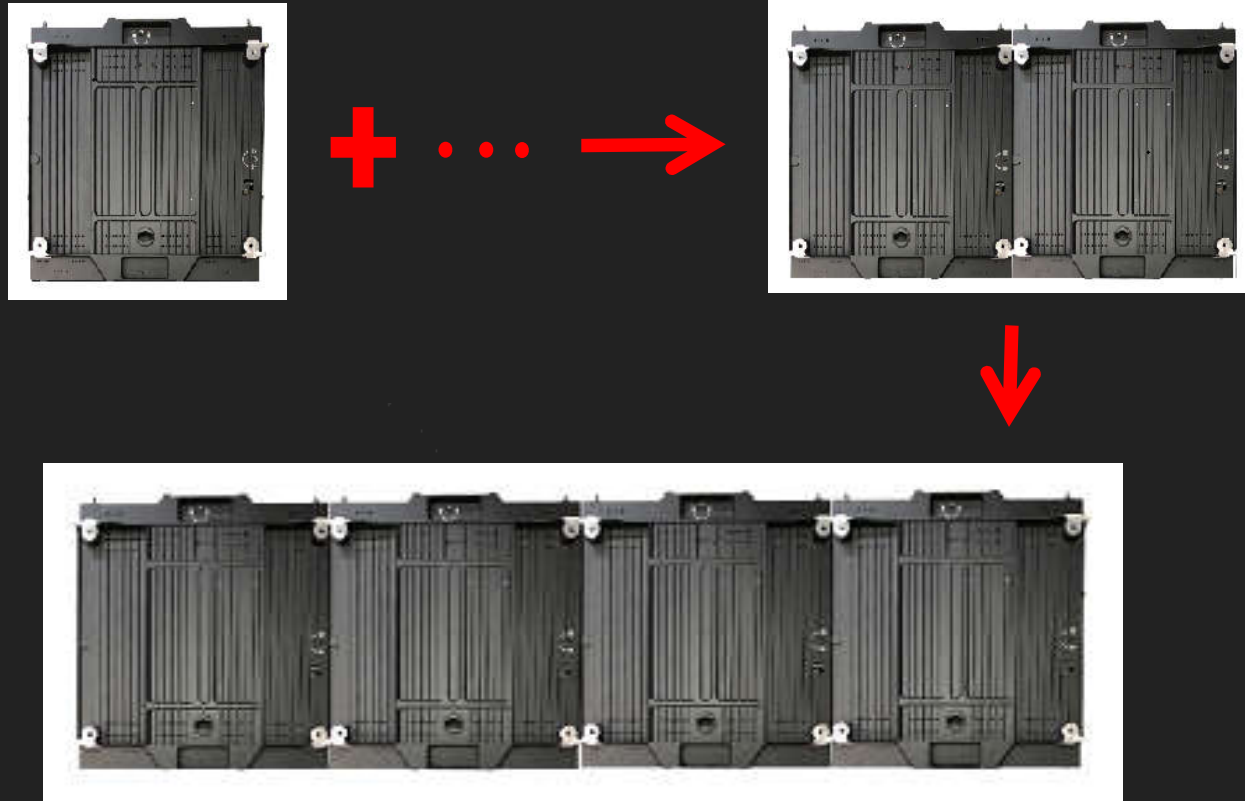
The installation of the cabinet ,
photovoltaic and connection plate



Enlarge the details



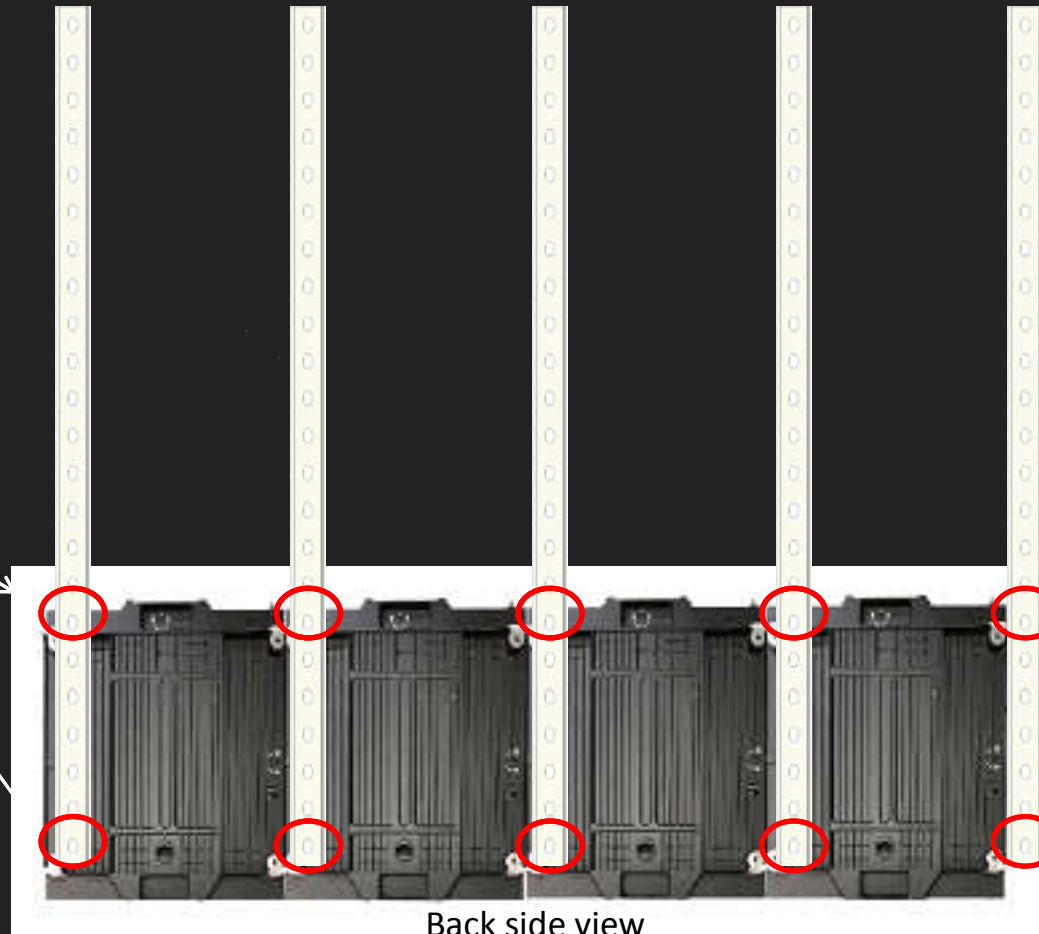
The details for connection plate at bottom of cabinet



For example: Install a screen with 4m X4m

Before install the cabinet on the photovoltaic bracket, need to assemble the cabinets 1pc(H)x4pcs(W) together on the ground

Make a good foundation of the first layer, ensure cabinets are on the same level, fast locks and latches are locked tightly between cabinets, add the connecting plate and screws between cabinet and the photovoltaic bracket.



Back side view

The 1st layer needs to be connected tightly with all connection plates , up and down, left and right

Connect the signal cables and power cables between the cabinets. Reserve the position of main signal cable and main power cable.



Back side view



Only need to connect the upper connection plate for the cabinet on 2nd layer

The installation and wiring of second layer



The installation and wiring of third and fourth layer

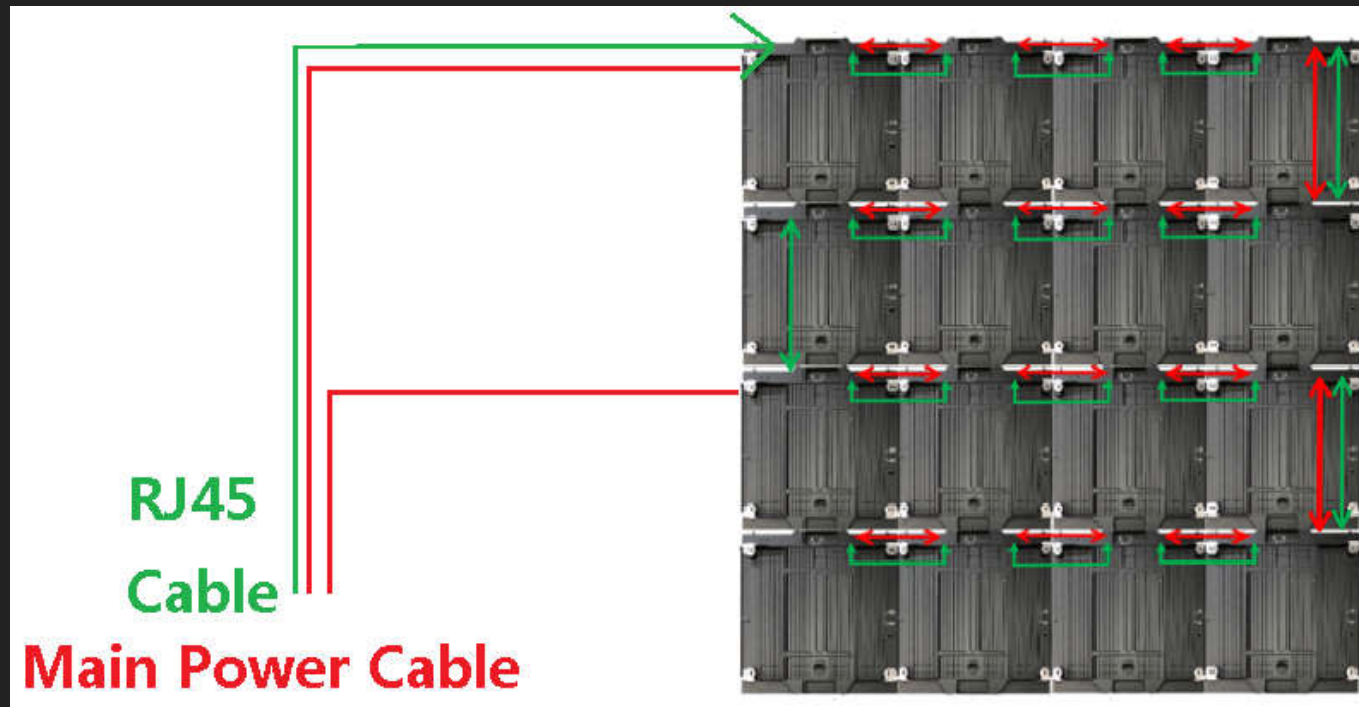


Only need to connect the upper connection plate for the cabinet on 3rd and 4th layer

For Example: 4cabinets Height*4 cabinets Width

DFS2.8 176 *176

DFS 2.8(one Cabinet resolution: 176*176)

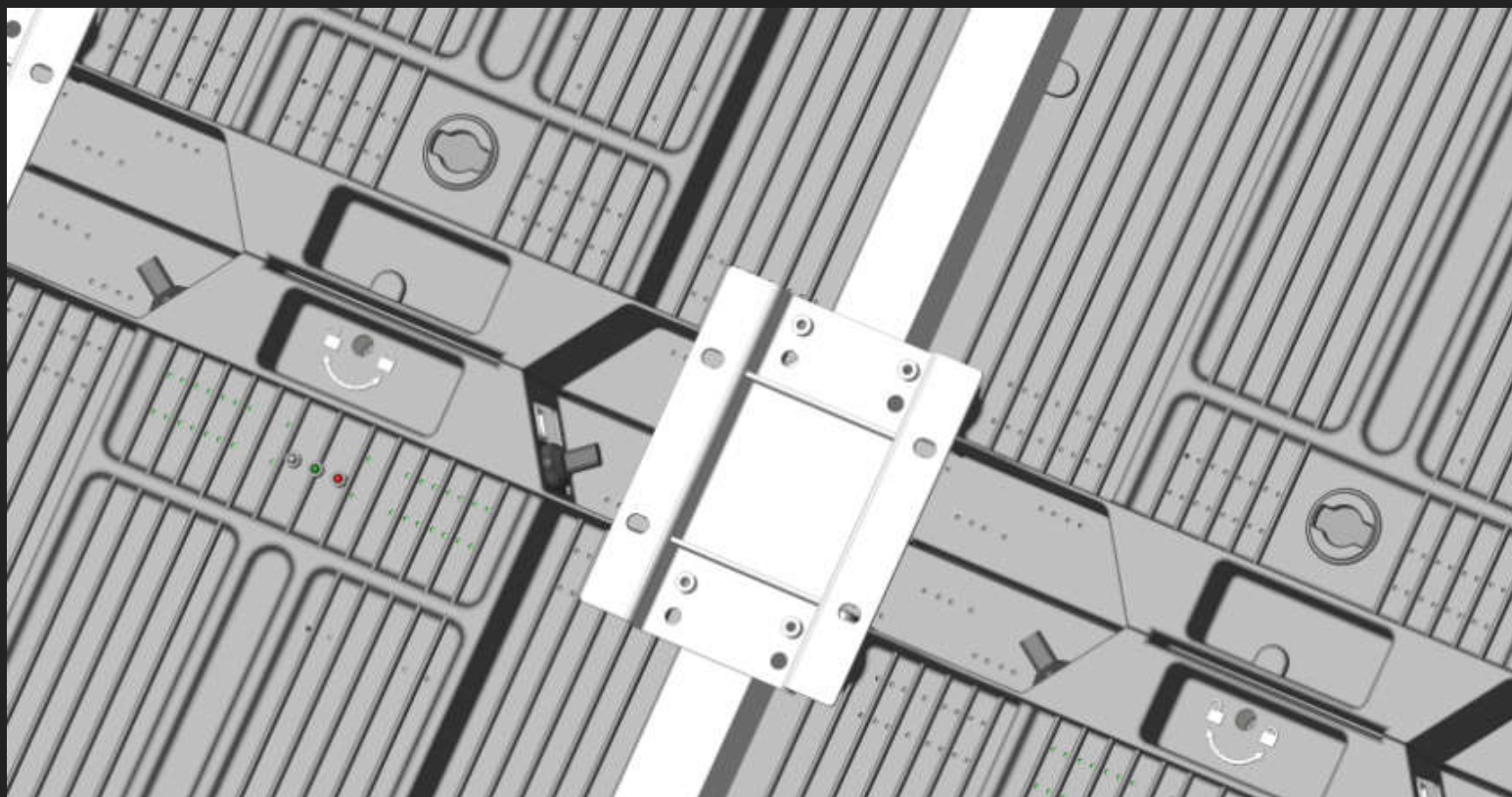


System and installation diagram (backside view)

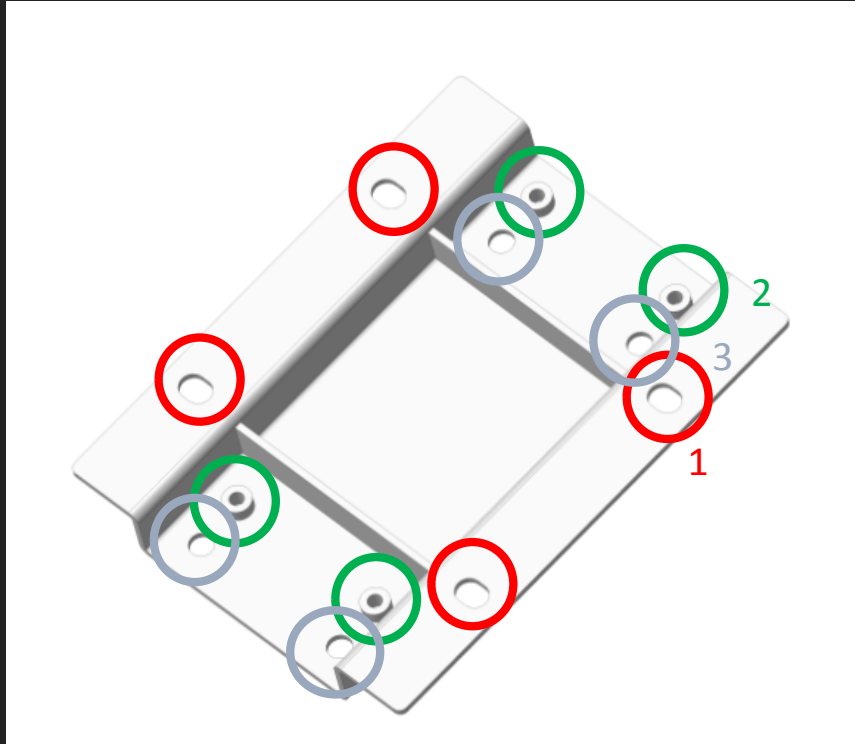
Example: 4 cabinets high * 8 cabinets wide



System and installation diagram (backside view)



Installation diagram



Details for connection plate

1

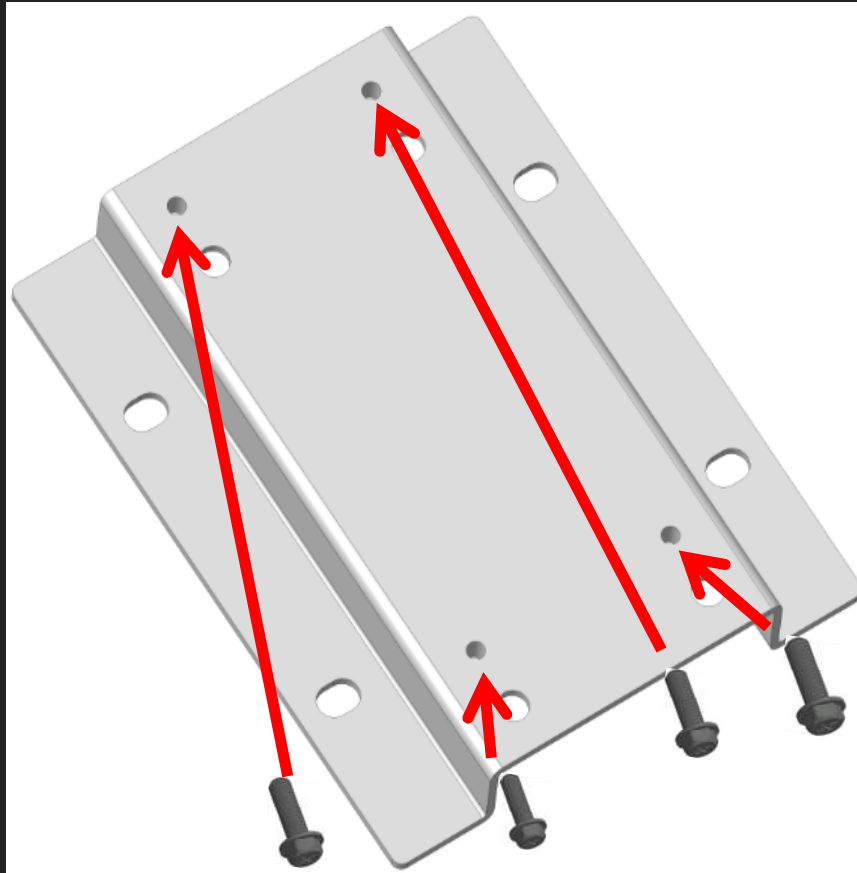
The round hole in the red circle is used as the hole for the connecting plate to be fixed on the wall. It is 9mm. Screws or expansion bolts are driven in from behind and fixed on the wall.

2

The round hole in the green circle is used for the front maintenance. It is M6mm. It is the screw hole of the connecting plate and the cabinet. The screw is driven in from the screw hole on the surface of the cabinet and locked with the screw thread.

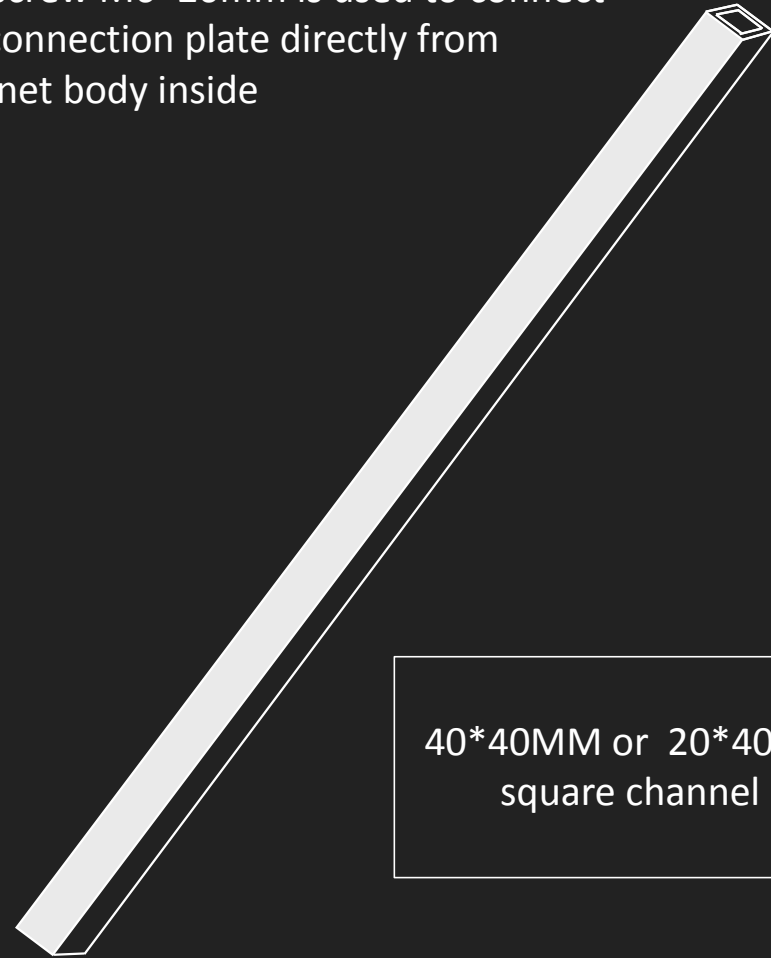
3

The round hole in the blue circle is used as a screw hole for rear maintenance. It is 8.5mm. It is the screw hole for connecting plate and the screw thread in the cabinet. The screw passes through from the front and can be directly locked with the cabinet screw thread.

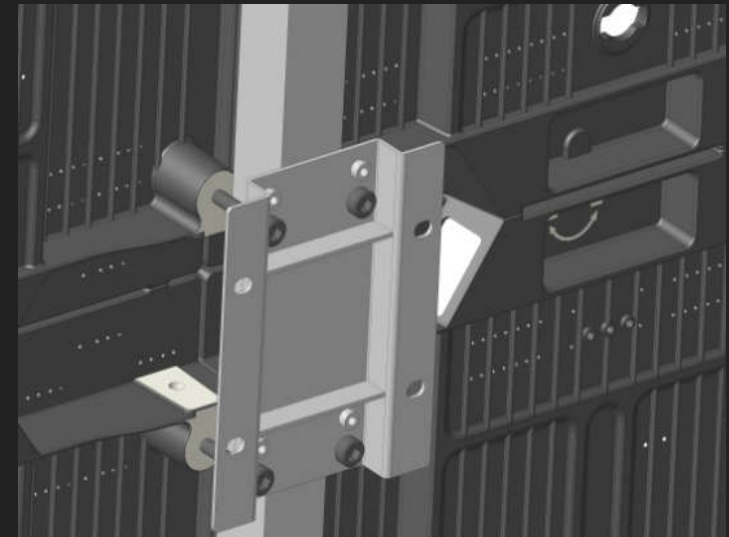
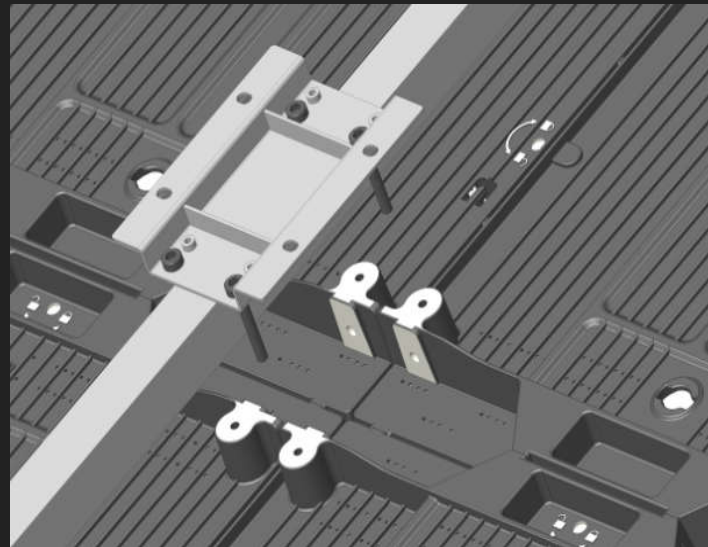
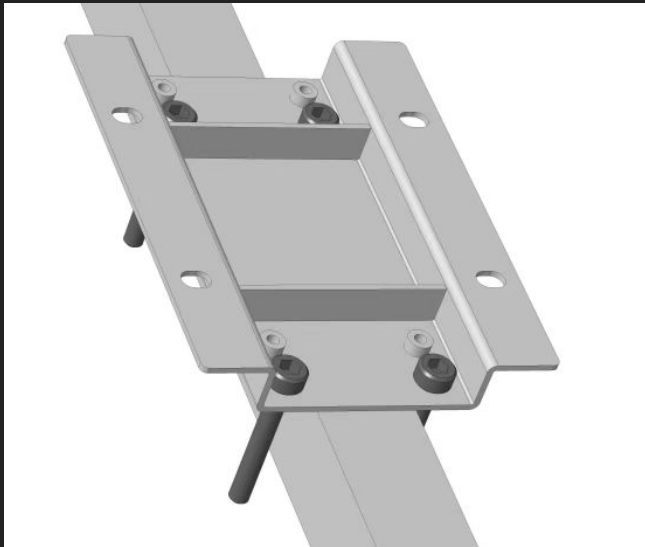


M6*20MM
M6*20MM screw

The screw M6*20mm is used to connect
the connection plate directly from
cabinet body inside



40*40MM or 20*40MM
square channel



Back plate Installation

