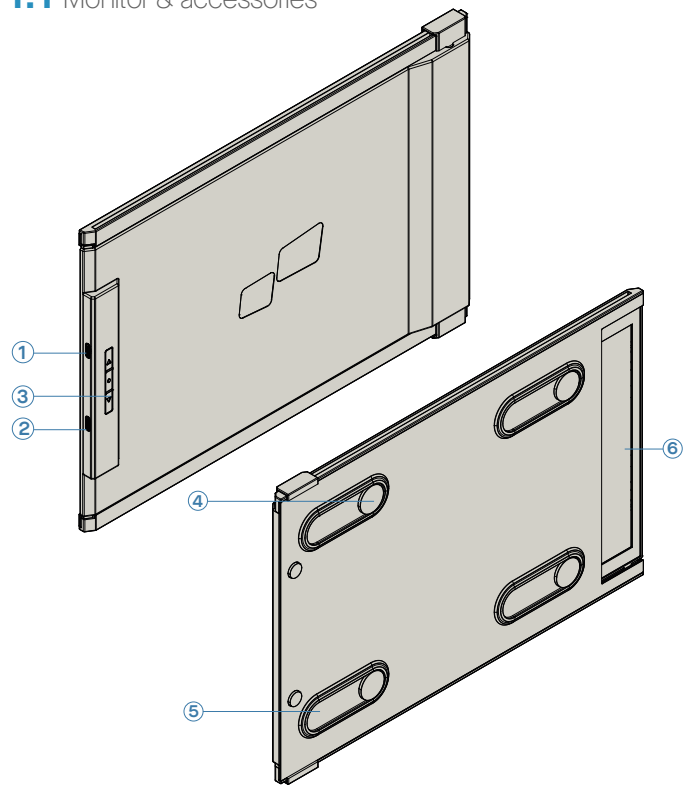


# 1 Package overview

## 1.1 Monitor & accessories

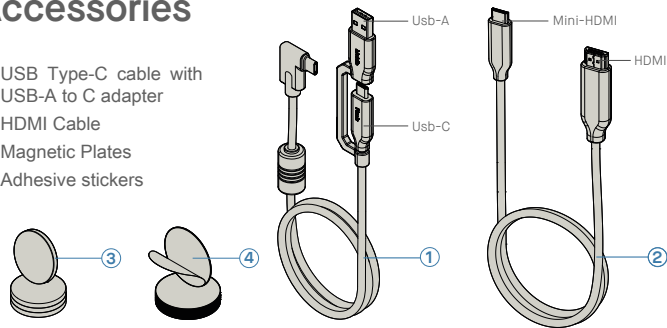


### Duex Plus DS

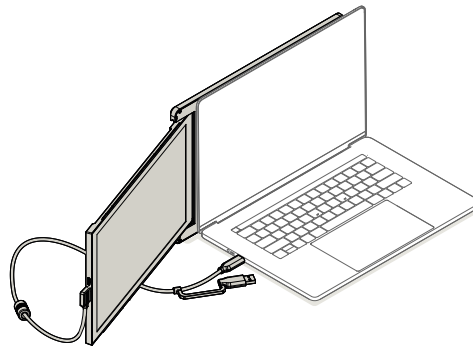
- ① Usb Type-C Port
- ② Mini HDMI Port
- ③ Menu Buttons
- ④ Magnetic Plates
- ⑤ Metallic Plates
- ⑥ Screen

## Accessories

- ① USB Type-C cable with USB-A to C adapter
- ② HDMI Cable
- ③ Magnetic Plates
- ④ Adhesive stickers

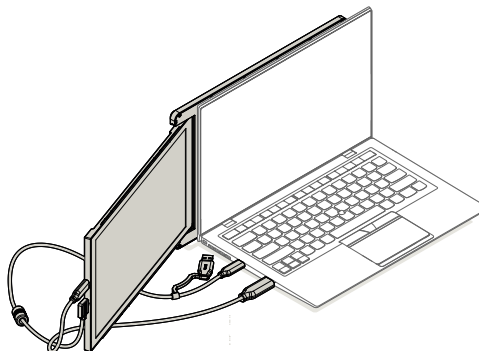


# 2 Connection Options



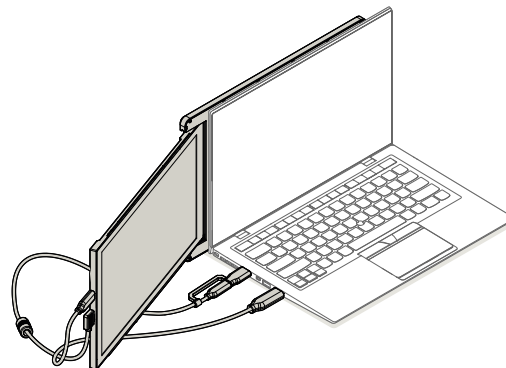
Using only USB-C to C cable

Note: For laptop has USB-C port with DP ALT mode



Using USB-C to C cable with HDMI cable

Note: For laptop has USB-C port without DP ALT mode

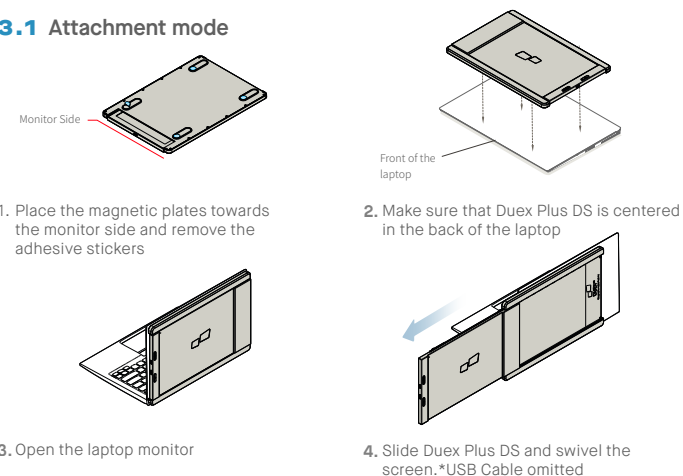


Using USB-C to C cable and Type-A adapter with HDMI cable

Note: For laptop has only USB-A and HDMI port

# 3 Monitor positioning guide

## 3.1 Attachment mode



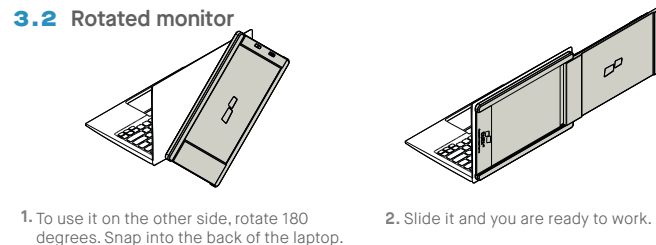
1. Place the magnetic plates towards the monitor side and remove the adhesive stickers

2. Make sure that Duex Plus DS is centered in the back of the laptop

3. Open the laptop monitor

4. Slide Duex Plus DS and swivel the screen. \*USB Cable omitted

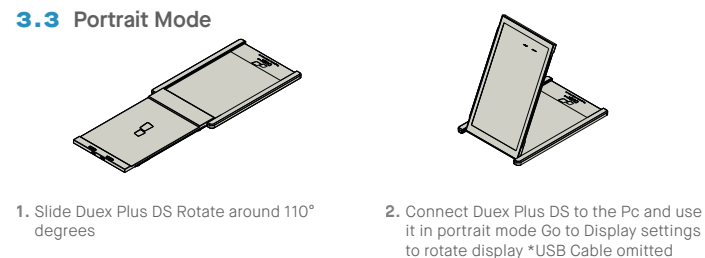
## 3.2 Rotated monitor



1. To use it on the other side, rotate 180 degrees. Snap into the back of the laptop.

2. Slide it and you are ready to work.

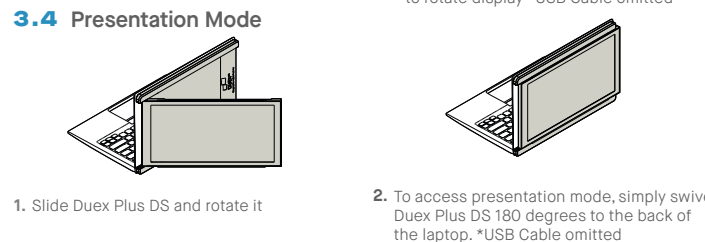
## 3.3 Portrait Mode



1. Slide Duex Plus DS Rotate around 110° degrees

2. Connect Duex Plus DS to the Pc and use it in portrait mode Go to Display settings to rotate display \*USB Cable omitted

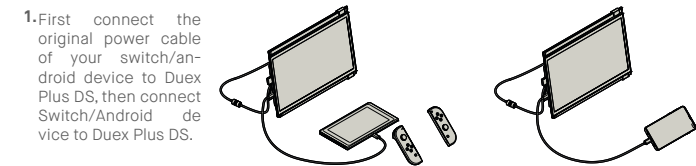
## 3.4 Presentation Mode



1. Slide Duex Plus DS and rotate it

2. To access presentation mode, simply swivel Duex Plus DS 180 degrees to the back of the laptop. \*USB Cable omitted

## 3.5 Nintendo Switch & Android mode Duex Plus DS Only

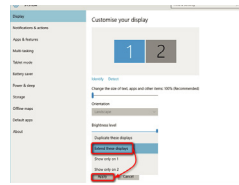
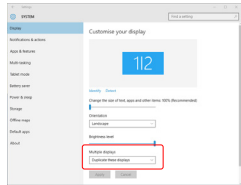


1. First connect the original power cable of your switch/android device to Duex Plus DS, then connect Switch/Android device to Duex Plus DS.

## 4.1 Duplicate Mode to Extend Mode for Windows

- Right click on your desktop while Duex Plus DS is connected and choose "Display Setting"
- Then you should either see this screen or the one at next Section
- If you have a duplicate screen and want to change it to extend mode, click on the "Duplicate these displays" from the drop down box

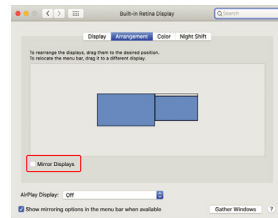
- When the drop down box is opened, choose "Extend these displays"
- Then click "Apply"
- Now you are in Extend Mode



## 4.2 Duplicate Mode to Extend Mode for Mac OS

- Click on system preference and go to Displays

- Checking the "Mirror Displays" box will switch between duplicate and extend mode for Duex Plus DS

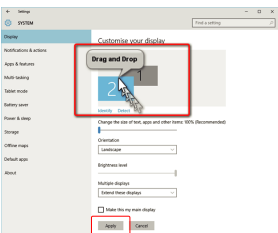
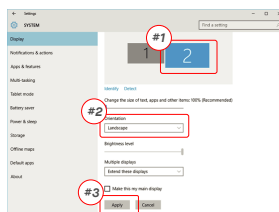


## 4.3 Rotate Display and Layout set up for Windows

If you are already in "Extend mode" and want to use Duex Plus DS on the left

1. First click on the 2nd screen icon
2. Then open the Orientation drop down box and change it from "Landscape" to "Landscape (flipped)"; Choose "Portrait" for Portrait Mode".
3. Then click "Apply"

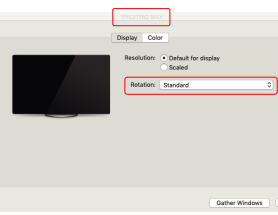
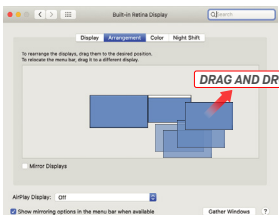
- Now your screen is upside down and ready to be use on the left with 1 extra step.
- Move the 2nd display icon from the right to the left of the 1st display by simply "Drag and Drop"
- Click "Apply" to finish the setting of the lay out.



## 4.4 Rotate Display and Layout set up for Mac OS

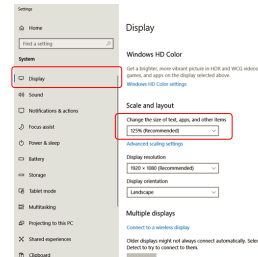
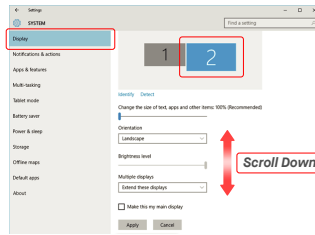
- To position the display on either left or right, simply drag

- To rotate the display, go to the Duex Plus DS display and drop it to the side you want.



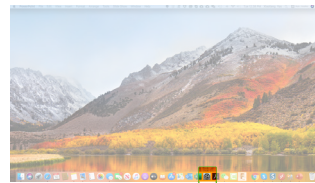
## 4.5 Change Display Settings to Adjust Content Size for Windows

1. To adjust content size on Duex Plus DS monitor, first click on the number "2" monitor under Display setting.
2. Scroll down and look for "scale and layout" options
3. Default size of text is set at 125% and user can increase it up to 175% or reduce back to 100% base on user preference.

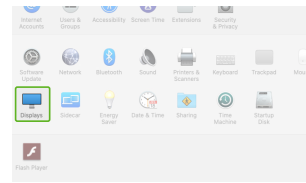


## 4.6 Change Display Settings to Adjust Content Size for Mac OS

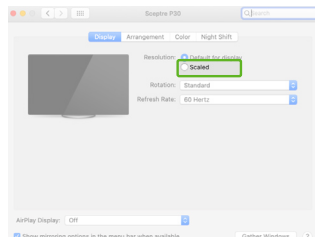
1. Click System Preferences



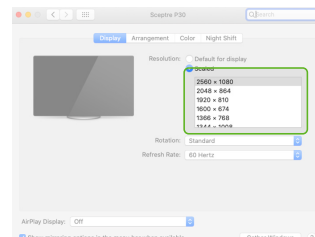
2. Click Displays



3. Hold down "Option" key and click "Scaled"



4. Select the resolution that fits your need



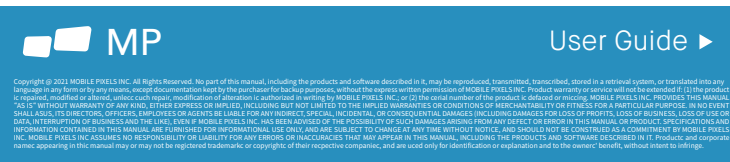
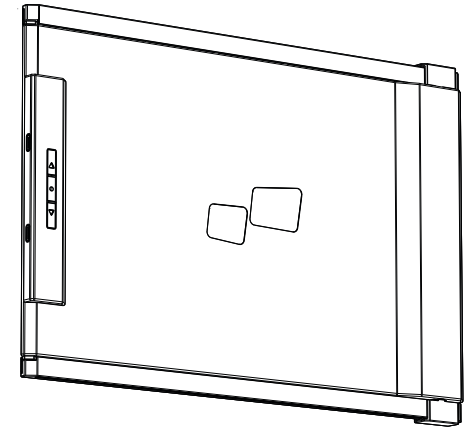
# 5 Technical Information

Model	Duex Plus DS
Size	13.3 In
Weight	1.8 lbs
Thickness	0.60 In
Thinnest	0.35 In
Signal Type	YES
Eye-Care Mode	YES
Auto-Rotation	YES
Nintendo Switch	YES
Android Phones	YES

\*Specifications are subject to change without notice.

# DUEX PLUS DS

## Portable Laptop Monitor



## 5.2 Safety and Handling

### IMPORTANT SAFETY INFORMATION

Carefully go through the user manual and other documentation before setting up the DUEX Plus DS. If any part is broken or damaged, do not try to open DUEX Plus DS or attempt to fix it yourself, please contact the retailer, a qualified service technician or email us directly at contact@mobilepixels.us. Store DUEX Plus DS under appropriate conditions, avoid exposure to extreme heat, moisture and dust. We recommend you to place DUEX Plus DS on a stable surface and keep your DUEX Plus DS in a sleeve to protect it during transport. Never spill liquid of any kind onto the surface or into the openings of the v. Do not spray any cleaner on the screen to avoid an electric shock. If your DUEX Plus DS gets wet, unplug all cables and reconnect till the DUEX Plus DS is completely dry. Carefully unplug all cables before cleaning DUEX Plus DS. Clean with a soft, dry, lint-free cloth. To ensure satisfactory experience, use the DUEX Plus DS with recommended display size of your laptop. Please disconnect the cables when you reverse the position of DUEX Plus DS, decouple the DUEX Plus DS from the backplane of your laptop, rotate 180. About a vector normal to the backplane, and re-couple to the backplane of the laptop computer.

### CHOKING HAZARD

DUEX Plus DS and accessories contain small parts that may present a choking hazard to small children, please keep them out of reach from small children.

### MEDICAL DEVICE INTERFERENCE

The DUEX Plus DS contains magnets. The DUEX Plus DS also contain components and radios that emit electromagnetic fields. It may interfere with personal medical devices, e.g. pacemakers or defibrillators. Keep a safe distance between the DUEX Plus DS and your medical device. Consult a physician or medical device manufacturer for specific details of your medical device. Stop using DUEX Plus DS if the interference is observed with your personal medical devices. Items with magnetically-stored data such as credit cards and hard drives may be sensitive to magnetic or electromagnetic fields, hence should be kept at a distance from DUEX Plus DS.

### FCC COMPLIANCE STATEMENT

This device complies with Part 15 of the FCC Rules. Operation is subject to the following two conditions: 1\_ This device may not cause harmful interference. 2\_ This device must accept any interference received including interference that may cause undesired operation. Note: This equipment has been tested and found to comply with the limits for a Class B digital device, pursuant to Part 15 of the FCC Rules. These limits are designed to provide reasonable protection against harmful interference in a residential installation. This equipment generates, uses, and can radiate radio frequency energy, and if not installed and used in accordance with the instructions, may cause harmful interference to radio communications. However, there is no guarantee that interference will not occur in a particular installation. If this equipment does cause harmful interference to radio or television reception, which can be determined by turning the equipment off and on, the user is encouraged to try to correct the interference by one or more of the following measures: 1\_Reorient or relocate the receiving antenna. 2\_Increase the separation between the equipment and receiver. 3\_Connect the equipment into an outlet on a circuit different from that to which the receiver is connected. 4\_Consult the dealer or an experienced radio/TV technician for help.

### WARRANTY

Mobile Pixels INC warrants this product for a period of 1 year upon the original date of purchase. Product or service warranty will not be extended to any losses or damages that are due to improper installation, misuse, neglect, modification, alteration by non-authorized third party, improper environment, or other irregularities.

### SUPPORT

For detailed troubleshooting information, contact:

CONTACT@MOBILEPIXELS.US