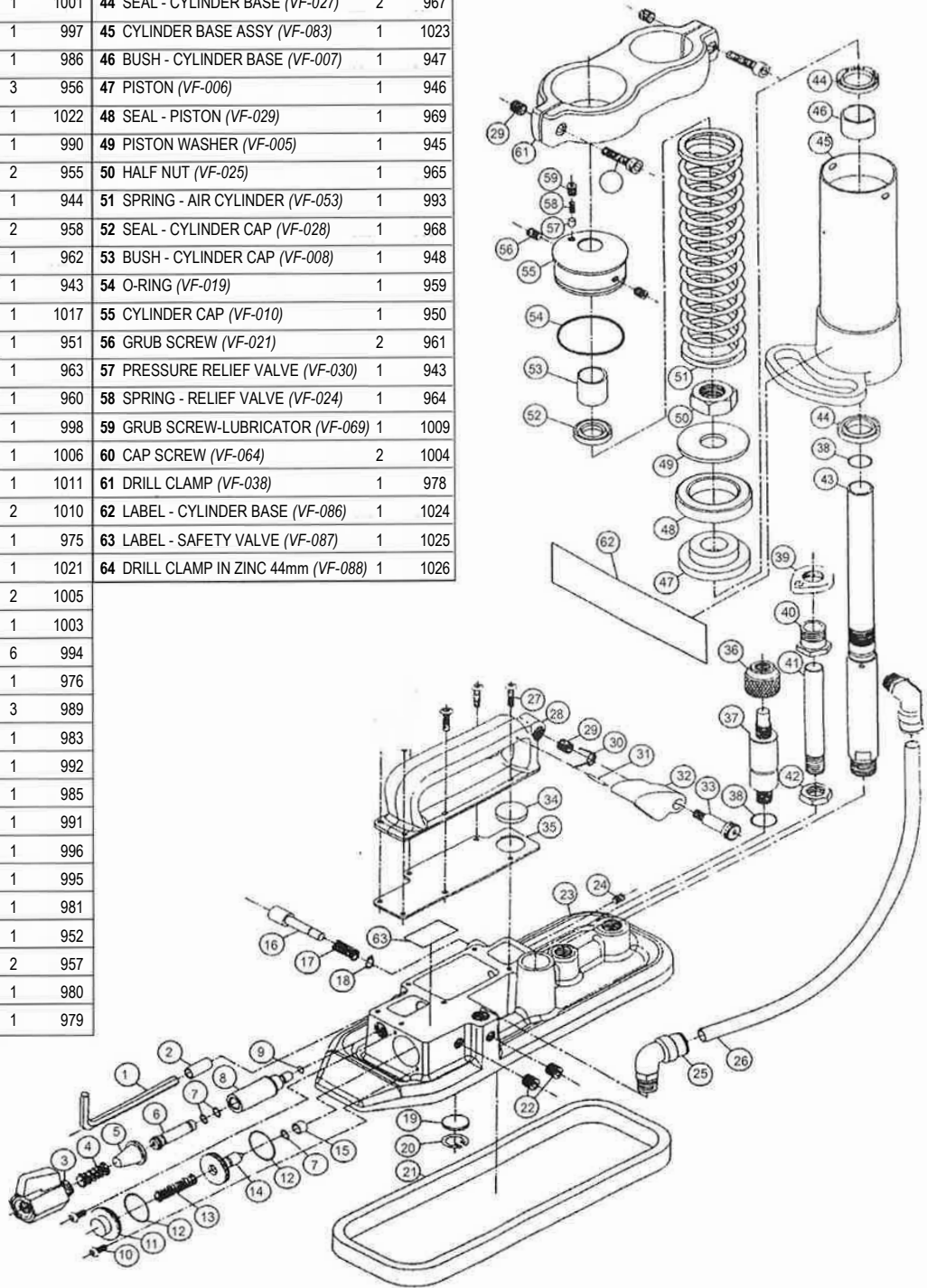


VAC-FORCE 2000 - Spare Parts List

| # | DESCRIPTION | QTY | P/N | # | DESCRIPTION | QTY | P/N |
|----|------------------------------------|-----|------|----|-----------------------------------|-----|------|
| 1 | ALLEN KEY (VF-067) | 1 | 1007 | 41 | LOCATION PIN (VF-014) | 1 | 954 |
| 2 | ALLEN KEY HOLDER (VF-088) | 1 | 1008 | 42 | HALF NUT (VF-026) | 1 | 966 |
| 3 | AIR SUPPLY CONTROL VALVE (VF-062) | 1 | 1002 | 43 | PISTON ROD (VF-013) | 1 | 953 |
| 4 | SPRING - AIR INLET (VF-061) | 1 | 1001 | 44 | SEAL - CYLINDER BASE (VF-027) | 2 | 967 |
| 5 | FILTER - AIR INLET (VF-057) | 1 | 997 | 45 | CYLINDER BASE ASSY (VF-083) | 1 | 1023 |
| 6 | CONNECTION TUBE (VF-046) | 1 | 986 | 46 | BUSH - CYLINDER BASE (VF-007) | 1 | 947 |
| 7 | O-RING (VF-016) | 3 | 956 | 47 | PISTON (VF-006) | 1 | 946 |
| 8 | VENTURI ASSEMBLY (VF-082) | 1 | 1022 | 48 | SEAL - PISTON (VF-029) | 1 | 969 |
| 9 | O-RING (VF-050) | 1 | 990 | 49 | PISTON WASHER (VF-005) | 1 | 945 |
| 10 | BUTTON HEAD SCREW (VF-015) | 2 | 955 | 50 | HALF NUT (VF-025) | 1 | 965 |
| 11 | SAFETY VALVE END CAP (VF-004) | 1 | 944 | 51 | SPRING - AIR CYLINDER (VF-053) | 1 | 993 |
| 12 | O-RING (VF-018) | 2 | 958 | 52 | SEAL - CYLINDER CAP (VF-028) | 1 | 968 |
| 13 | SPRING - SAFETY VALVE (VF-022) | 1 | 962 | 53 | BUSH - CYLINDER CAP (VF-008) | 1 | 948 |
| 14 | SAFETY VALVE (VF-003) | 1 | 943 | 54 | O-RING (VF-019) | 1 | 959 |
| 15 | SEAL - SAFETY VALVE (VF-077) | 1 | 1017 | 55 | CYLINDER CAP (VF-010) | 1 | 950 |
| 16 | RELEASE BUTTON (VF-011) | 1 | 951 | 56 | GRUB SCREW (VF-021) | 2 | 961 |
| 17 | SPRING - RELEASE BUTTON (VF-023) | 1 | 963 | 57 | PRESSURE RELIEF VALVE (VF-030) | 1 | 943 |
| 18 | CIRCLIP - RELEASE BUTTON (VF-020) | 1 | 960 | 58 | SPRING - RELIEF VALVE (VF-024) | 1 | 964 |
| 19 | FILTER - VACUUM (VF-058) | 1 | 998 | 59 | GRUB SCREW-LUBRICATOR (VF-069) | 1 | 1009 |
| 20 | CIRCLIP - VACUUM (VF-066) | 1 | 1006 | 60 | CAP SCREW (VF-064) | 2 | 1004 |
| 21 | SEAL - VACUUM (VF-071) | 1 | 1011 | 61 | DRILL CLAMP (VF-038) | 1 | 978 |
| 22 | GRUB SCREW-SAFETY VALVE (VF-070) | 2 | 1010 | 62 | LABEL - CYLINDER BASE (VF-086) | 1 | 1024 |
| 23 | VACUUM PAD (VF-035) | 1 | 975 | 63 | LABEL - SAFETY VALVE (VF-087) | 1 | 1025 |
| 24 | GRUB SCREW - LUBRICATOR (VF-081) | 1 | 1021 | 64 | DRILL CLAMP IN ZINC 44mm (VF-088) | 1 | 1026 |
| 25 | ELBOW - MALE SWIVEL (VF-065) | 2 | 1005 | | | | |
| 26 | AIR DRILL SUPPLY HOSE (VF-063) | 1 | 1003 | | | | |
| 27 | BUTTON HEAD SCREW (VF-054) | 6 | 994 | | | | |
| 28 | HANDLE (VF-036) | 1 | 976 | | | | |
| 29 | RECOIL (VF-049) | 3 | 989 | | | | |
| 30 | SPRING - DRILL FEED LEVER (VF-043) | 1 | 983 | | | | |
| 31 | ROLL PIN (VF-052) | 1 | 992 | | | | |
| 32 | DRILL FEED LEVER (VF-045) | 1 | 985 | | | | |
| 33 | SHOULDER SCEW (VF-051) | 1 | 991 | | | | |
| 34 | FILTER - EXHAUST (VF-056) | 1 | 996 | | | | |
| 35 | SEAL - HANDLE (VF-055) | 1 | 995 | | | | |
| 36 | DRILL FEED ADJ. (VF-041) | 1 | 981 | | | | |
| 37 | DRILL FEED VALVE (VF-012) | 1 | 952 | | | | |
| 38 | O-RING (VF-017) | 2 | 957 | | | | |
| 39 | TEAR DROP (VF-040) | 1 | 980 | | | | |
| 40 | TUBE BOLT (VF-039) | 1 | 979 | | | | |



EVERGREEN TOOL CO., INC.

Peshtigo, WI www.evergreentool.com