

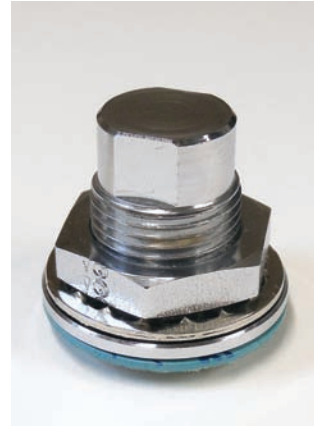
# “EVERGREEN BLIND QUIK-SEAL, Compression Seal and QUIK-PATCH”



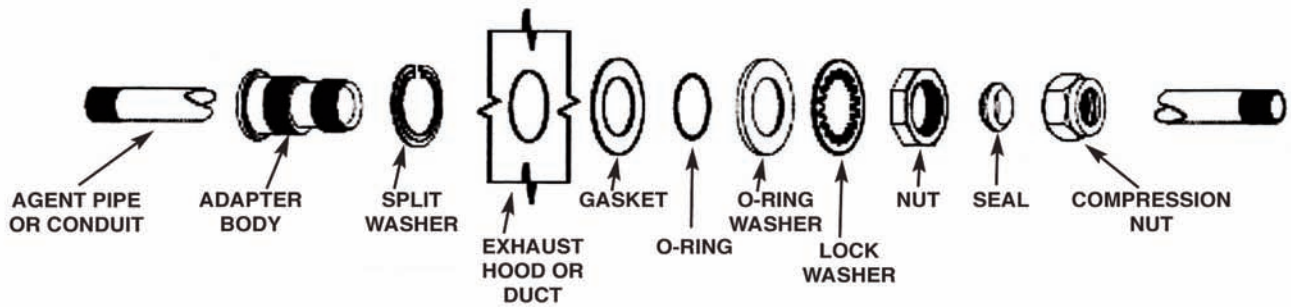
QUIK-SEAL



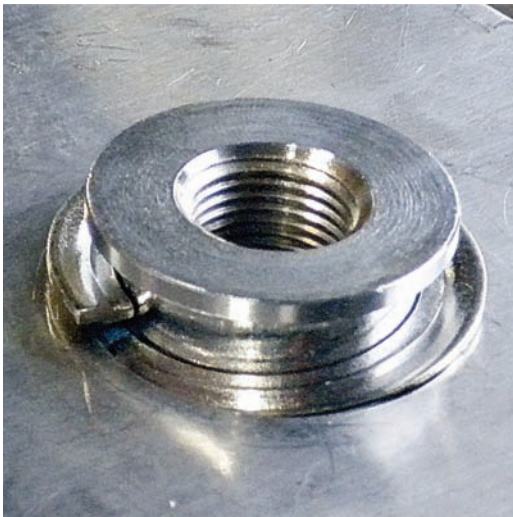
Compression Seal



QUIK-PATCH



| Sheet Metal Hole: |  |           | Torque Specifications |                 |
|-------------------|--|-----------|-----------------------|-----------------|
| P/N               | Fitting Size                               | Hole Size | Gasket Nut            | Compression Nut |
| 1232              | QUIK-SEAL for 1/4" Pipe                    | 1 3/8"    | 45-50 ft. lbs.        | N/A             |
| 1204              | QUIK-SEAL for 3/8" Pipe                    | 1 3/8"    | 45-50 ft. lbs.        | N/A             |
| 1210              | QUIK-SEAL for 1/2" Pipe                    | 1 5/8"    | 45-50 ft. lbs.        | N/A             |
| 1272              | QUIK-SEAL for 3/4" Pipe                    | 1 7/8"    | 45-50 ft. lbs.        | N/A             |
| 1196              | QUIK-PATCH for 1" Hole                     | 1"        | 45-50 ft. lbs.        | N/A             |
| 1250              | QUIK-PATCH for 1 1/8" Hole                 | 1 1/8"    | 45-50 ft. lbs.        | N/A             |
| 1180              | QUIK-PATCH for 1 3/8" Hole                 | 1 3/8"    | 45-50 ft. lbs.        | N/A             |
| 1262              | QUIK-PATCH for 1 5/8" Hole                 | 1 5/8"    | 45-50 ft. lbs.        | N/A             |
| 1297              | QUIK-PATCH for 1 7/8" Hole                 | 1 7/8"    | 45-50 ft. lbs.        | N/A             |
| 1185              | Compression Seal for 1/4" Tube             | 1"        | 45-50 ft. lbs.        | 7 ft. lbs.      |
| 1172              | Compression Seal for 5/8" Tube & 3/8" Pipe | 1 3/8"    | 45-50 ft. lbs.        | 25-30 ft. lbs.  |
| 1106              | Compression Seal for 1/2" EMT Conduit      | 1 3/8"    | 45-50 ft. lbs.        | 25-30 ft. lbs.  |
| 1287              | Compression Seal for 3/4" Pipe             | 1 7/8"    | 45-50 ft. lbs.        | 25-30 ft. lbs.  |



---

To install the “Evergreen Blind Quik-Seal, Compression Seal and Quik-Patch”, proceed in the following manner:

1. Drill, punch, or saw hole in the sheet metal surface according to the chart (pp. 1). Hole should not be more than .040” oversize.
2. Without removing the hardware from the seal body, loosen the nut so the hardware moves freely on the body. Installing a pipe nipple into the end opposite the flange will help installer hold the Quik-Seal fitting.
3. Insert adapter body flange through the drilled hole.
4. Push the body to one edge of the hole and feed the split end of the washer through the remaining space in the hole. Continue until the washer is through the hole and against the flange of the body.
5. Ensure split washer stays on the backside of the hole as nut is hand tightened.
6. Move the assembly around in the hole such that you can feel the offset in the split washer drop into the hole. This action will center the fitting assembly into the hole.
7. Tighten the nut to the recommended torque by holding the body with a second wrench placed over the flats or knurl on the body of the threads.
8. **Compression Seal Only:** Wrench tighten compression nut to the recommended torque.