

**Phoenix
Fire Station
No. 62**

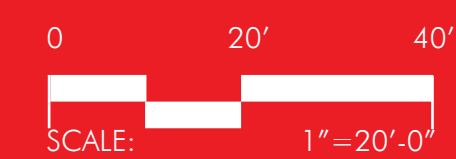
W. Lower Buckeye Rd.



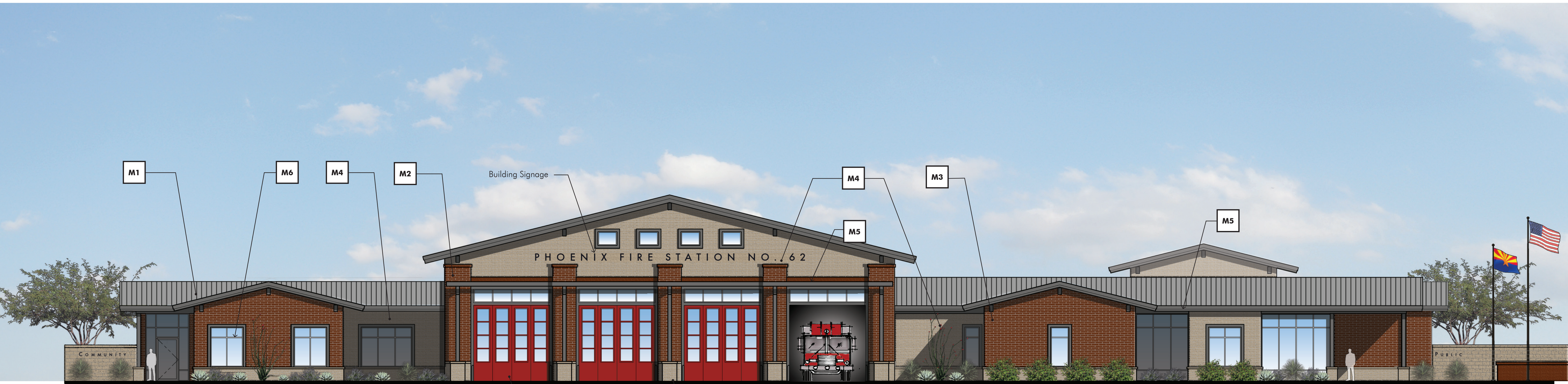
City of Phoenix

Fire Station No. 62 - Site Plan

THIS ARTIST RENDERING IS FOR CONCEPTUAL DESIGN ONLY AND SHOULD NOT BE REFERRED TO AS A CONSTRUCTION DOCUMENT. PLANS AND ELEVATIONS SUBJECT TO CHANGE AS THE DESIGN PROCESS EVOLVES.



Perlman
Architects of Arizona
321021 02.27.23



Front Elevation

Building Signage

Apparatus Bay Door
Tiger
Color: RAL 3001

M4 Metal Posts
with Brick Base



Side Elevation at Living Quarters

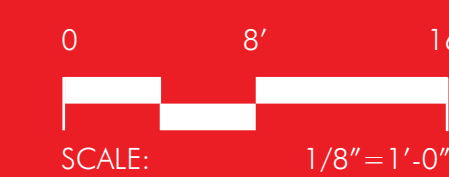
M4 Metal Posts
with Brick Base



City of Phoenix

Fire Station No. 62 - Elevation Option 1A

THIS ARTIST RENDERING IS FOR CONCEPTUAL DESIGN ONLY AND SHOULD NOT BE REFERRED TO AS A CONSTRUCTION DOCUMENT. PLANS AND ELEVATIONS SUBJECT TO CHANGE AS THE DESIGN PROCESS EVOLVES.



Perlman
Architects of Arizona
321021 02.27.23



Rear Elevation

Apparatus Bay Door
Tiger
Color: RAL 3001

M4 Metal Posts
with Brick Base



Side Elevation at Support/Crisis Response

M4

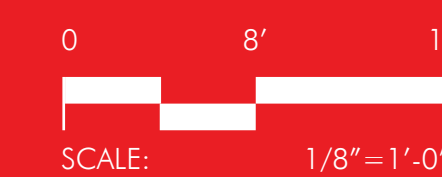
M4 Metal Posts
with Brick Base



City of Phoenix

Fire Station No. 62 - Elevation Option 1A

THIS ARTIST RENDERING IS FOR CONCEPTUAL DESIGN ONLY AND SHOULD NOT BE REFERRED TO AS A CONSTRUCTION DOCUMENT. PLANS AND ELEVATIONS SUBJECT TO CHANGE AS THE DESIGN PROCESS EVOLVES.



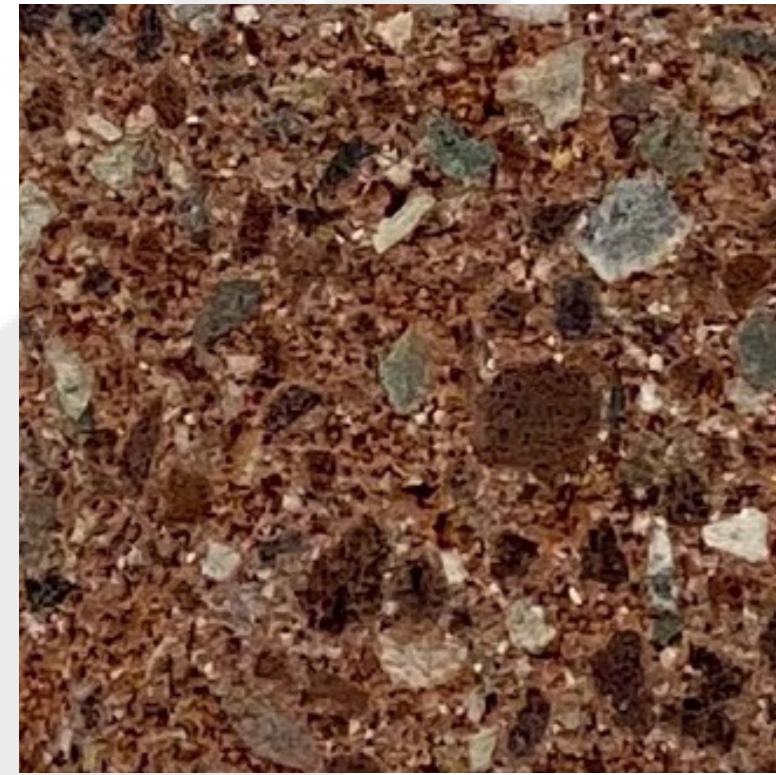
Perlman
Architects of Arizona
321021 02.27.23

OPTION 1A ALTERNATE- MATERIAL LEGEND

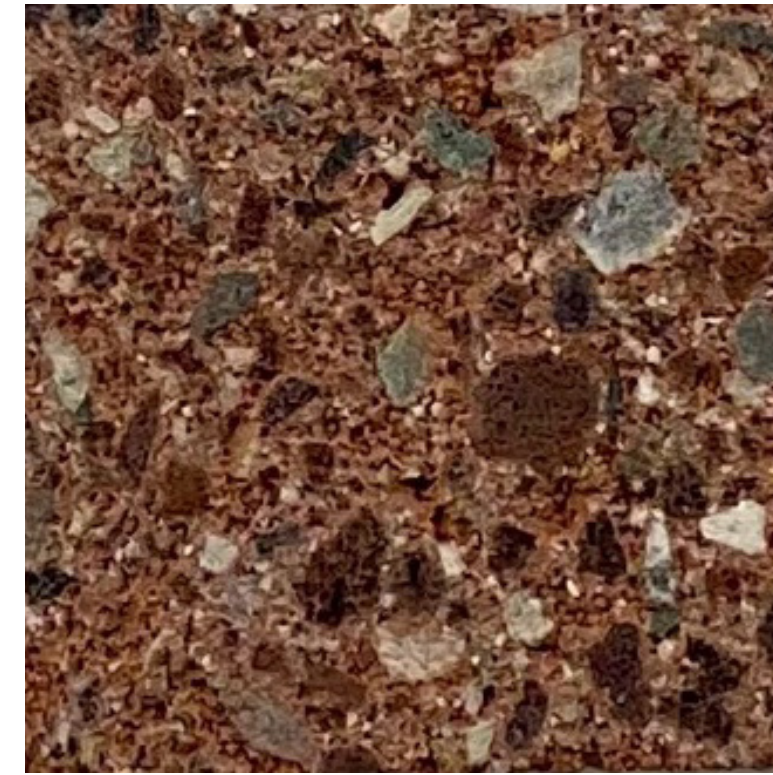
tan cmu



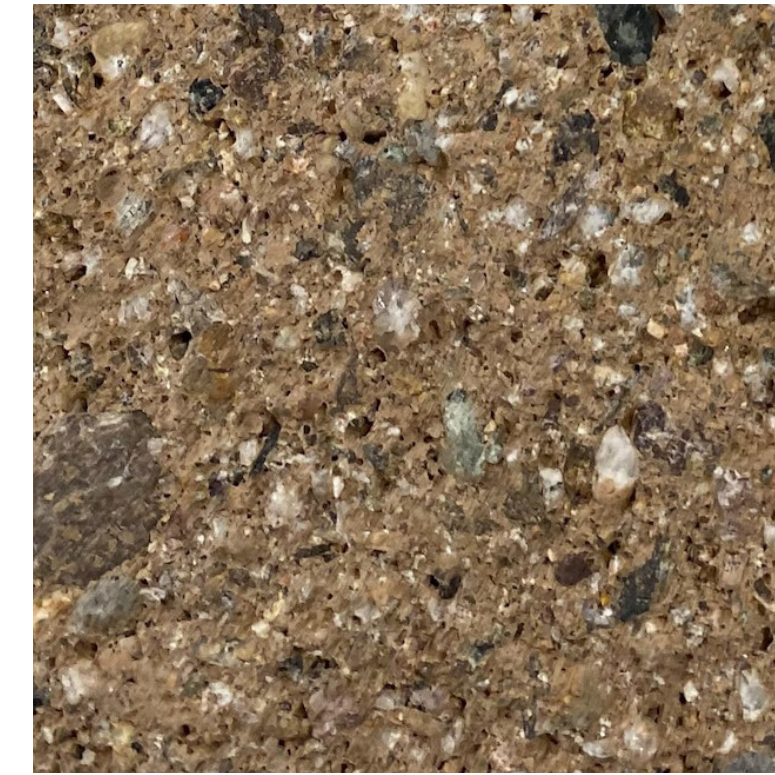
M1 - Standing Seam Roof
ATAS International
Color: #28 Silversmith



M2 - CMU Block
Interstate Block
Size: 8x4x16 at App. Bay
Atlas Matte
Color: Mountain Red



M3- CMU Block
Interstate Block
Size: 4x4x16
Atlas Matte
Color: Mountain Red



M4- CMU Block
Interstate Block
Size: 4x4x16 at Wainscot
Atlas Matte
Color: Desert Sand



M5 - Posts, Beams, Trellis, Fascia
and Door and Window Surrounds
Painted - DE6377 Boat Anchor



M6- Window & Door Frames
Color: AC-2 Clear Anodized



City of Phoenix

Fire Station No. 62 - Material Board

THIS ARTIST RENDERING IS FOR CONCEPTUAL DESIGN ONLY AND SHOULD NOT BE REFERRED TO AS A CONSTRUCTION DOCUMENT. PLANS AND ELEVATIONS SUBJECT TO CHANGE AS THE DESIGN PROCESS EVOLVES.



City of Phoenix

Fire Station No. 62 - Rendering

THIS ARTIST RENDERING IS FOR CONCEPTUAL DESIGN ONLY AND SHOULD NOT BE REFERRED TO AS A CONSTRUCTION DOCUMENT. PLANS AND ELEVATIONS SUBJECT TO CHANGE AS THE DESIGN PROCESS EVOLVES.

Perlman
Architects of Arizona
321021 02.27.23



City of Phoenix

Fire Station No. 62 - Rendering

THIS ARTIST RENDERING IS FOR CONCEPTUAL DESIGN ONLY AND SHOULD NOT BE REFERRED TO AS A CONSTRUCTION DOCUMENT. PLANS AND ELEVATIONS SUBJECT TO CHANGE AS THE DESIGN PROCESS EVOLVES.

Perlman
Architects of Arizona
321021 02.27.23



City of Phoenix

Fire Station No. 62 - Rendering

THIS ARTIST RENDERING IS FOR CONCEPTUAL DESIGN ONLY AND SHOULD NOT BE REFERRED TO AS A CONSTRUCTION DOCUMENT. PLANS AND ELEVATIONS SUBJECT TO CHANGE AS THE DESIGN PROCESS EVOLVES.

Perlman
Architects of Arizona
321021 02.27.23



City of Phoenix

Fire Station No. 62 - Rendering

THIS ARTIST RENDERING IS FOR CONCEPTUAL DESIGN ONLY AND SHOULD NOT BE REFERRED TO AS A CONSTRUCTION DOCUMENT. PLANS AND ELEVATIONS SUBJECT TO CHANGE AS THE DESIGN PROCESS EVOLVES.

Perlman
Architects of Arizona
321021 02.27.23