

## PCP-SSP Software Setup & Tweaking Windows Audio Devices

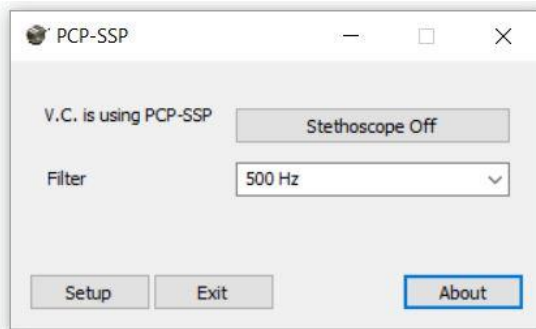
1. Install PCP-SSP software on the patient side computer
2. Plug the USB Stethoscope and the headset into the patient side computer

**NOTE:**(Leave it plugged into the computer during the entire patient encounter. Unplugging it while still in a videoconference will shut down the local microphone which will require a restart of the software or a reboot of the computer to clear.)

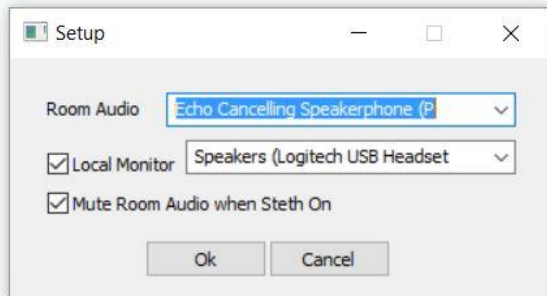
3. Reboot the computer to reset USB ports
4. Start Video Conference Software
5. In the Video Conference program, select “RNK PCP-SSP” as the default microphone and do not change it. This will not affect your ability to use your normal room mic.



6. Open PCP-SSP software from the stethoscope icon on your Windows desktop
7. In the PCP-SSP software window, confirm that it reads “VC is using PCP-SSP”. If it does not, then the video conference program is not seeing it for some reason. This usually happens when the videoconference software is not running.



8. In the PCP-SSP software window, click on “Setup” and bring up the settings window. Make sure that the boxes for “Local Monitor” and “Mute Room Audio when steth on” are both checked.

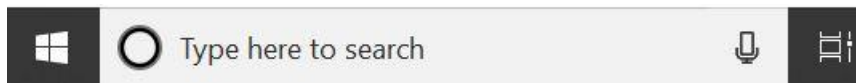


Then, using the pull down menu by “Room Audio” select whichever microphone you are using as your main videoconference microphone. In the pulldown box by “Local Monitor”, select your headset as the local monitoring speakers. Click OK when done and return to main PCP-SSP window.

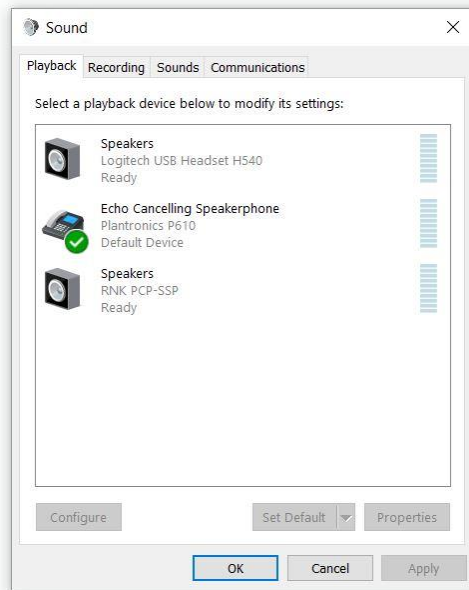
9. At this point you should be good to go. With your headset on, toggle the stethoscope On/Off switch to “stethoscope on”, select your desired filter level (250 or 500 for heart, 1000 or LUNGS for lungs) and complete the auscultation.
10. When done, click on “stethoscope on” to toggle it to the off position and resume your video conference. When set up this way, PCP-SSP mutes your room mic when the steth is on and automatically unmutes it when the steth is off. No manual switching or changing settings is necessary.

## TWEAKING WINDOWS SETTINGS

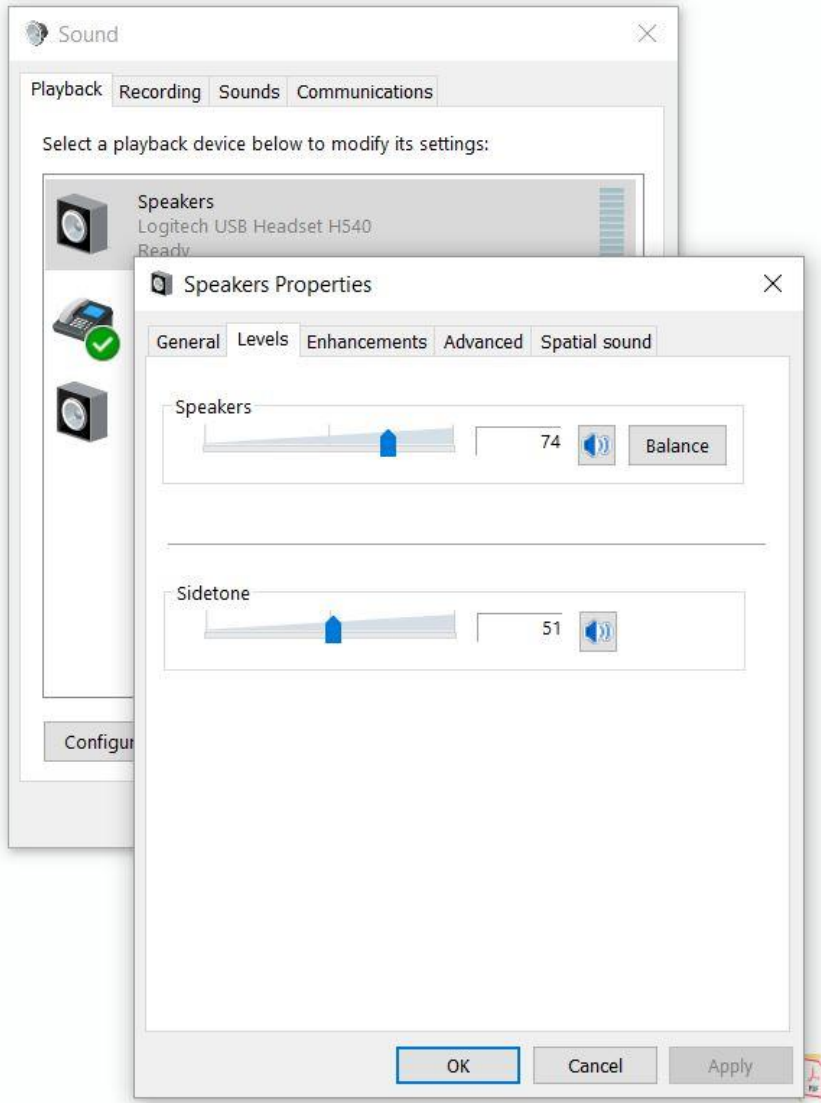
11. If there are issues with volume, static, feedback, competing mics, etc. you may need to tweak your Windows audio device settings. To open the audio devices control panel, type “sound” in the search window. You should be able to access the audio control panel from here. Alternatively, right click on the Windows volume control icon and select “sounds” to open the audio devices window.



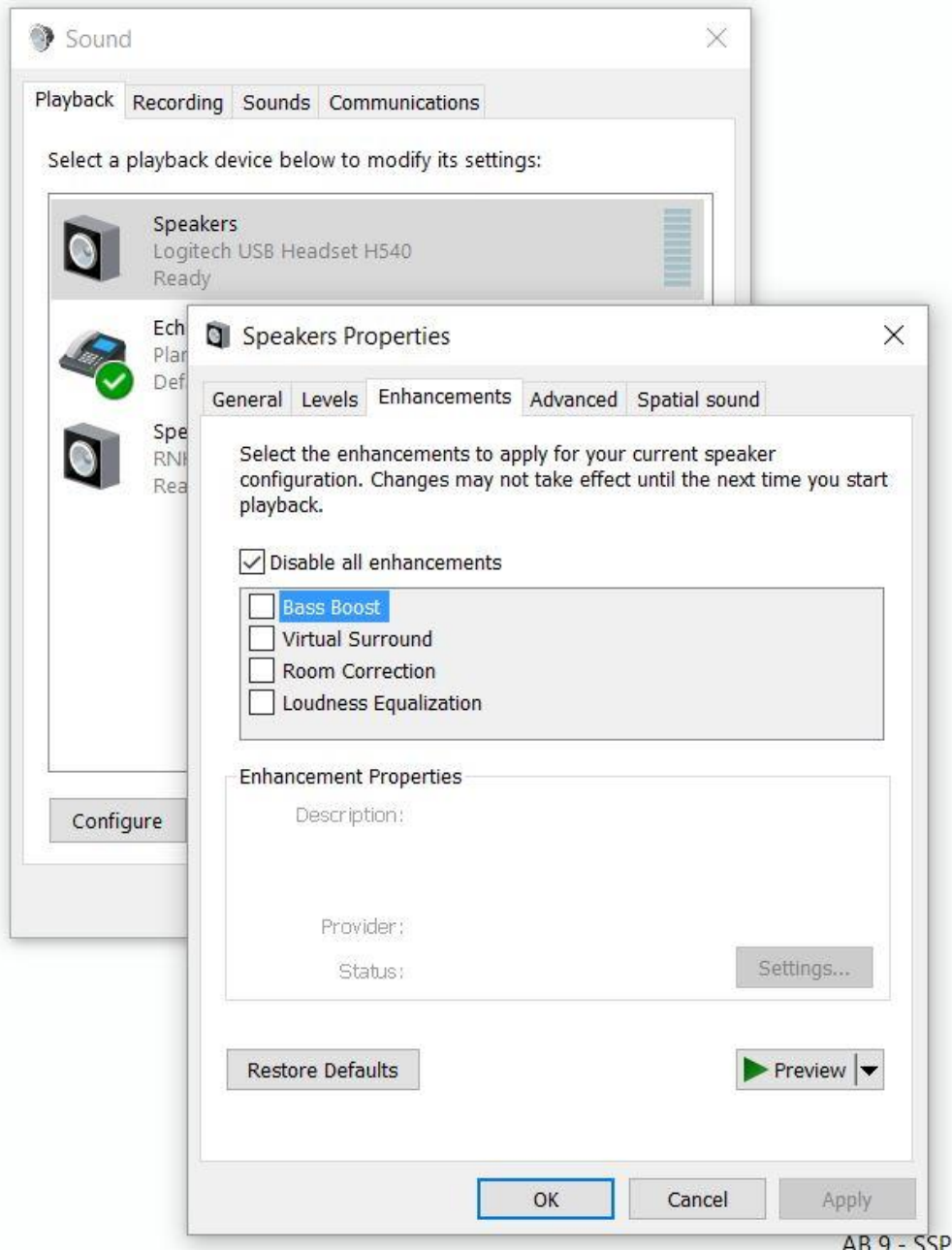
12. Starting with the Playback Devices, right click on them individually and disable any that will not be in use on the computer. In this case, we have disabled all speakers except main speakers, headset and RNK PCP-SSP. To simplify, right click on any speaker and uncheck “Show Disabled” and “Show Disconnected”. This will get rid of all devices but the ones you are using and make things easier to work with.



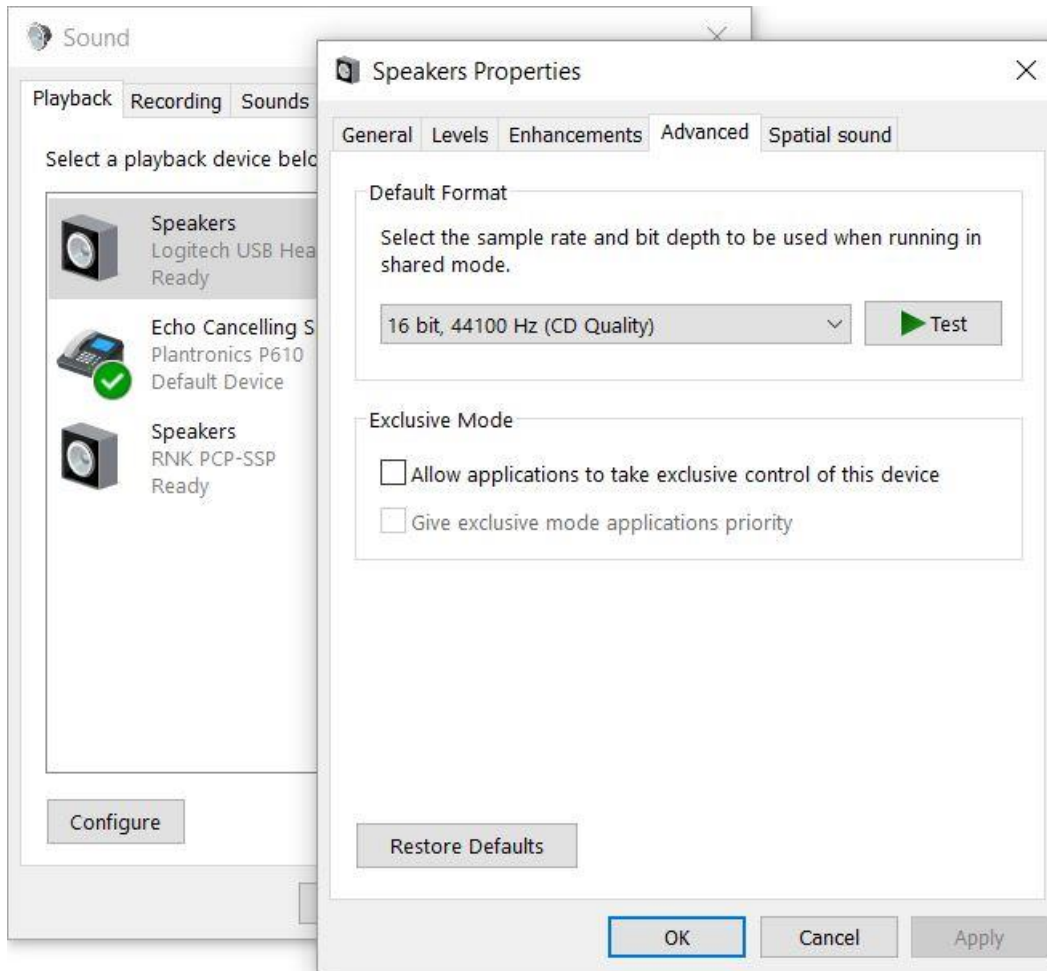
13. Next, adjust the headset settings for optimal listening. Right click on the headset speaker device and then click on the “Levels” tab to adjust the volume settings. Optimal settings should be about 75 – 80 % on the slide bar. DO NOT push it all the way to 100% as this will introduce noise artifacts.



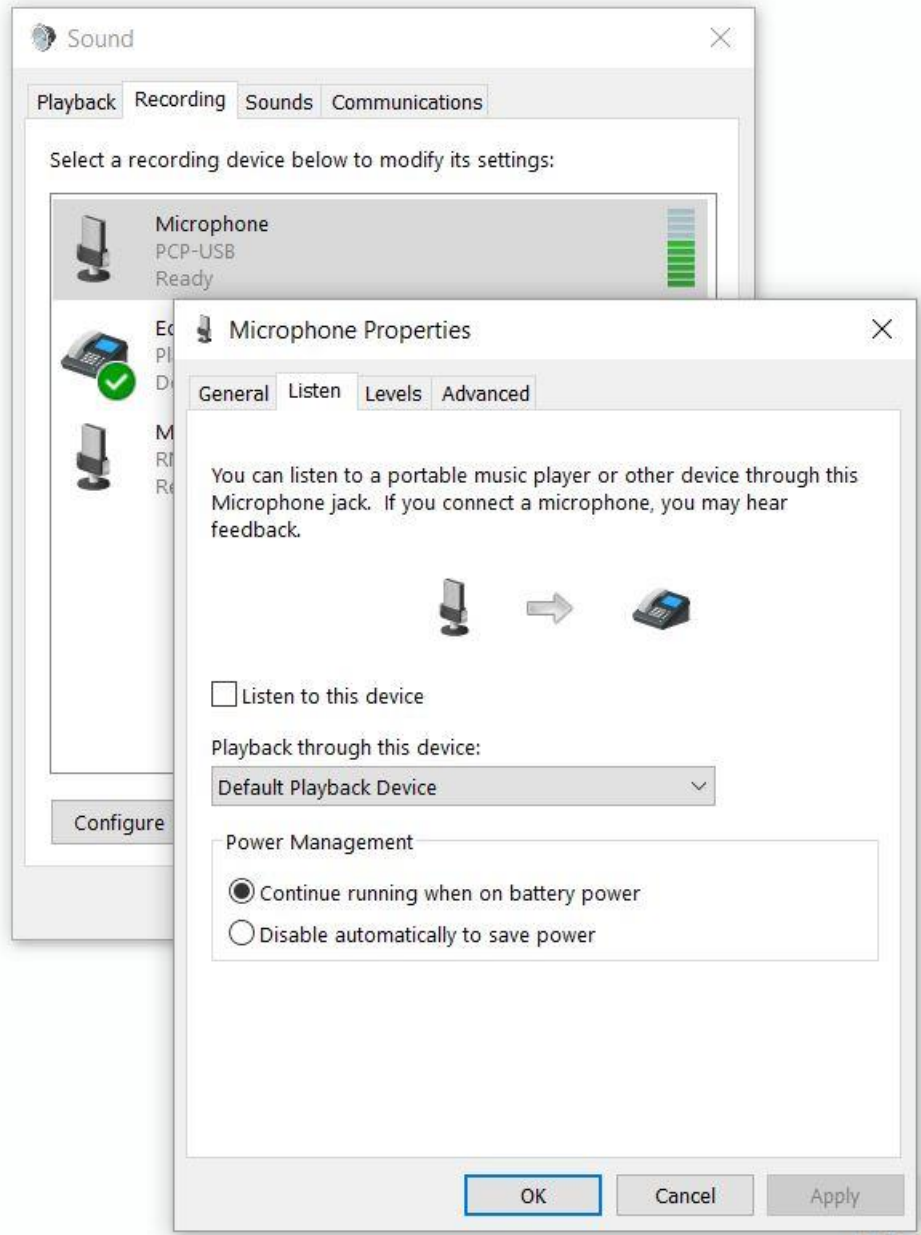
14. Under the “Enhancements” tab, make sure all enhancements are disabled. Automatic gain control and volume leveling will negative affect the stethoscope sound.



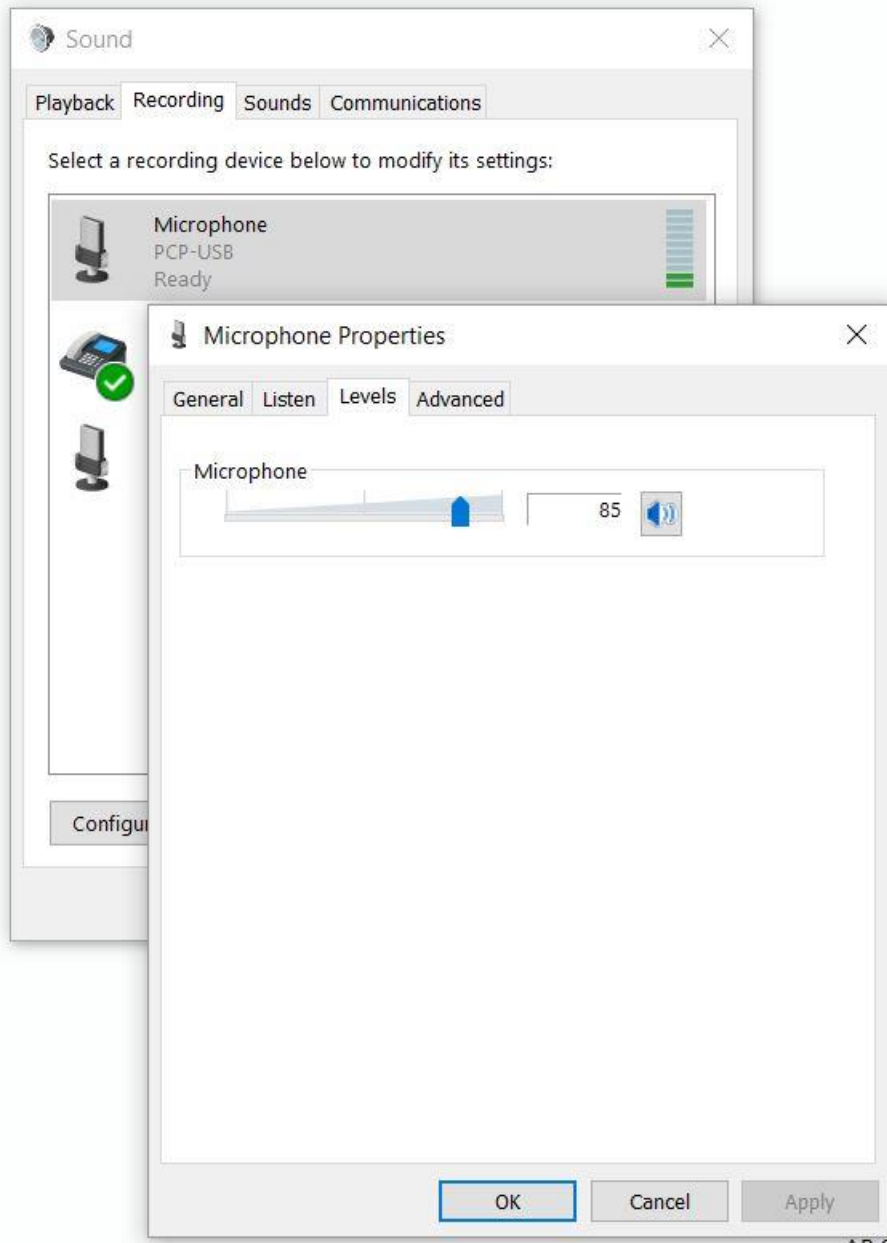
15. Next, click on the “Advanced” tab and make sure the settings are set to 16 bit CD Quality 44,100Hz. Also, make sure the check boxes under “Exclusive Mode” are not checked.



16. After the playback devices are set, go back to the main sound page and click on the “Recording” tab to adjust microphone settings. Tweaks described below should be done for both PCP-USB and PCP-SSP. Right click on a microphone to bring up properties. The first item to look at is the “Listen” tab. Make sure the “Listen to this device” box is NOT checked.

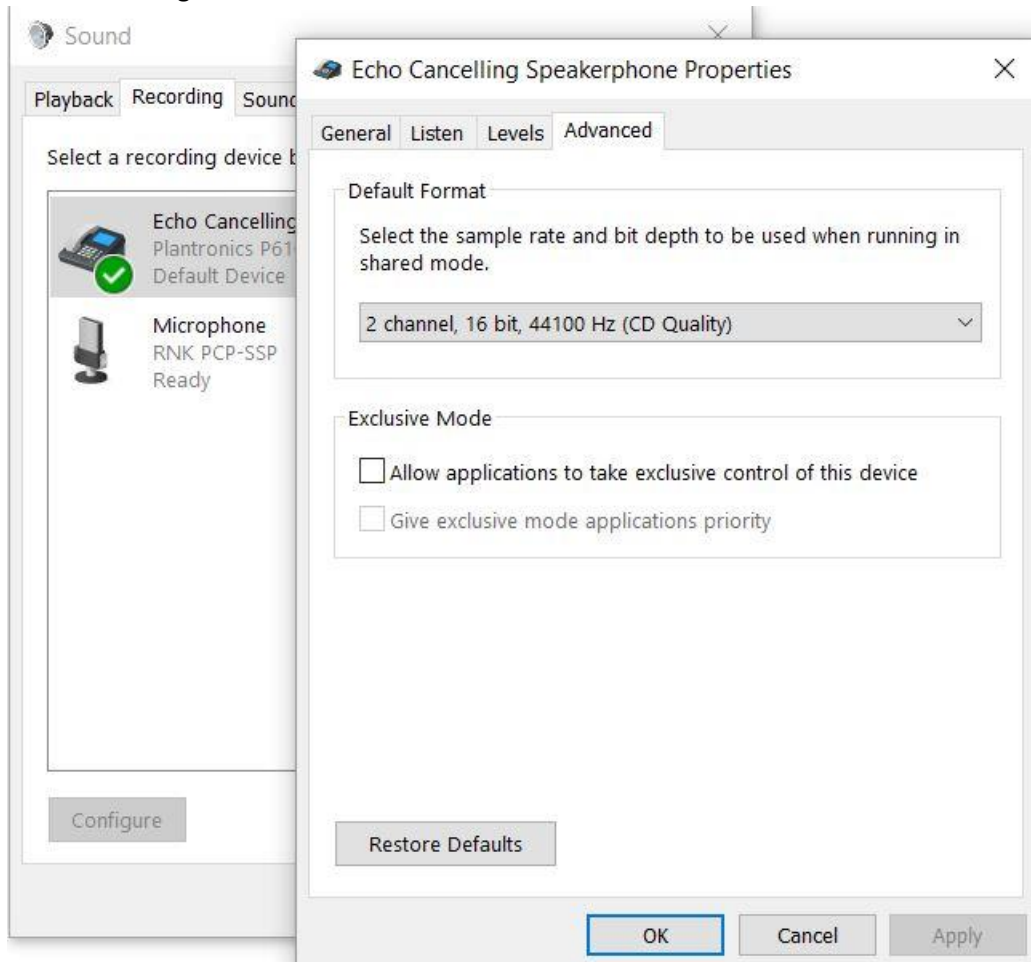


17. Next click on the “Levels” tab and push the mic slider up to no more than 85%.





18. Under the “Advanced” tab, select 16 bit, 44,100 Hz CD Quality to match the software and headset settings.



19. Once all these settings have been tweaked, you should not have to adjust them again unless someone changes them. By selecting your room speakers and room mic as default devices, they should always be there for different users and the headset and stethoscope software will work nominally when turned on.