

RCS-100

Medical Camera System



INTRODUCING A NEW LEVEL OF DIGITAL IMAGING

The Riester **RCS-100** is a portable and versatile digital diagnostic camera. Suitable for local office use, store-and-forward telemedicine and real-time, interactive telemedicine between patients and remote clinicians.

Featuring multiple lens attachments, enabling instant sharing across your practice and across the world.

Quickly and efficiently share images across your practice, hospital system, or the globe to improve communication, diagnosis and patient outcomes. This WiFi enabled camera with a 5" screen delivers high resolution (3264 x 2448) images to accurately document and monitor conditions. Otoscope, general and dermatology lenses make the **RCS-100** a versatile asset to advancing technology in your practice, hospital or telehealth setting.

- › WiFi Networked
- › Portable & Ergonomic
- › Extremely clear imaging; 8 MP CMOS flexibility to rapidly share images or video
- › Simplicity of use
- › Hundreds of other uses for visual medical exams

RCS-100

German precision engineering, with cutting edge medical technology, delivers a full featured medical camera system to improve monitoring, diagnoses and your ability to share imaging.

KEY FEATURES

- › Rotary wheel for one-hand operation
- › Digital camera allows accurate first diagnosis and planning of consistent follow-up treatment
- › Easy to use touch screen
- › Multi functional diagnosis designed for ENT, dermatology endoscopy and general practice
- › Simple lense connections makes changing fast and easy
- › 5" full HD color TFT-LCD display 1.280 x 720 pixel including scratch proof cover LCD screen
- › 8 MP CMOS delivers high resolution, scaleable images
- › Automatic (otoscope/general lens) & manual (all lenses) focus settings
- › Choice of 4° or 9° Endoscope Adapters
- › Wireless WiFi Networking and USB UVC for Telemedicine



LENS DESIGNED FOR YOUR DIAGNOSTIC PROCESSES



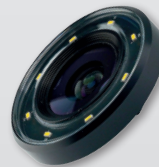
OTOSCOPE LENS

- Enhanced view of auditory canal
- Disposable and reusable specula
- Visible white LED light
- 6 x Magnification on display



DERMATOSCOPE LENS

- Accurate identification and measurement of skin lesions
- No immersion necessary
- Visible white LED light
- 2 x - 8 x Magnification



GENERAL LENS

- Visible white LED light
- 5,500K LED color temp
- 78° Field of view
- 4 x Digital Magnification



ENDOSCOPE ADAPTERS

- Compatible with a broad range of endoscope of all leading manufacturers based on C-Mount standard (e.g. Wolf, Storz, Olympus, Scholly)
- Choice of 4° or 9° Endoscope Adapters

SKU 1970-H	basic model, no lenses
SKU 1970-HXXO	with otoscope lens
SKU 1970-HDXX	with dermatoscope lens
SKU 1970-HXGX	with general lens
SKU 1970-HDGO	with all lenses (otoscope, dermatoscope and general lens)
SKU 1970-HDGX	with dermatoscope and general lens
SKU 1970-HXGO	with general and otoscope lens
SKU 1970-HDXO	with dermatoscope and otoscope lens
SKU 13277	4° endoscope lens
SKU 13278	9° endoscope lens