

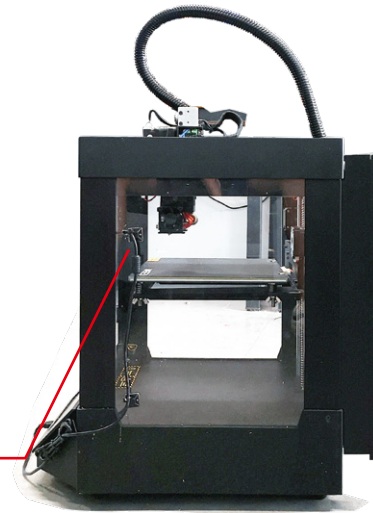
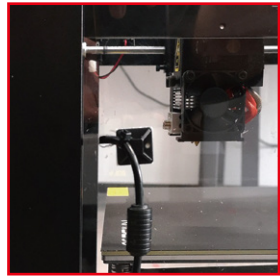
We offer two ways to install Webcam. Please select the practicable one based on your own circumstances.

## Version one

### Step 1: Drill the hole

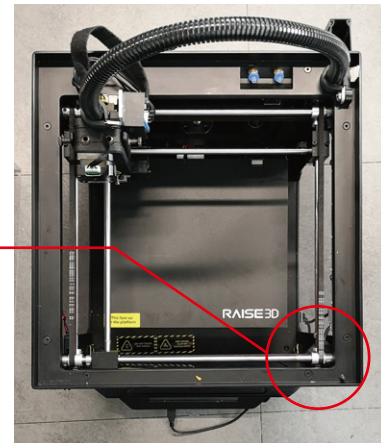
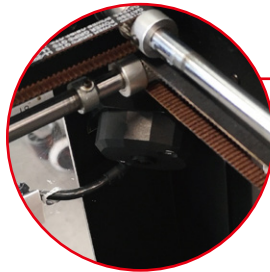
Drill a hole at the marked position in the image below.

Please be careful when drilling.



### Step 2: Confirm the position of camera

Check out where the camera will be installed to.



### Step 3: Attach Cable Ties

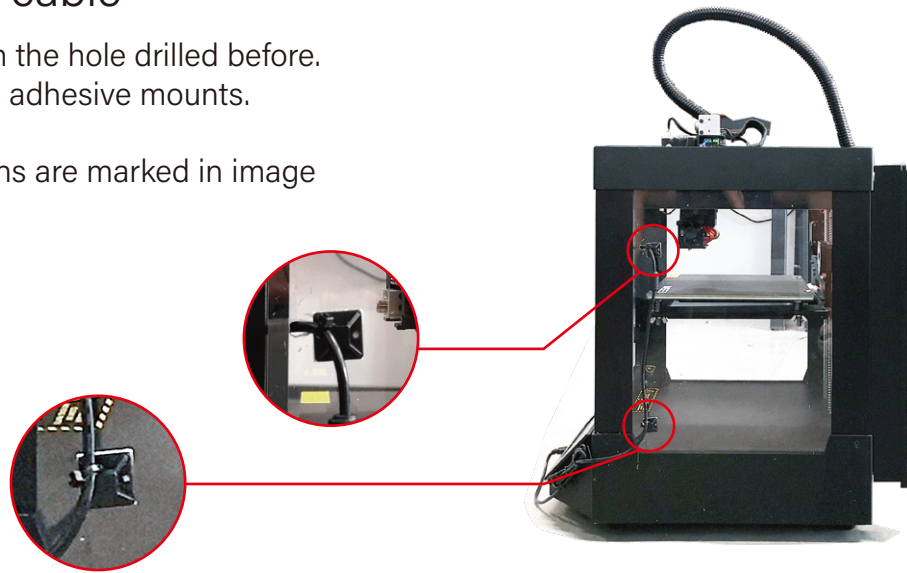
Run the wire through the adhesive cable mounts and secure them with the included zip ties.



## Step 4: Route the cable

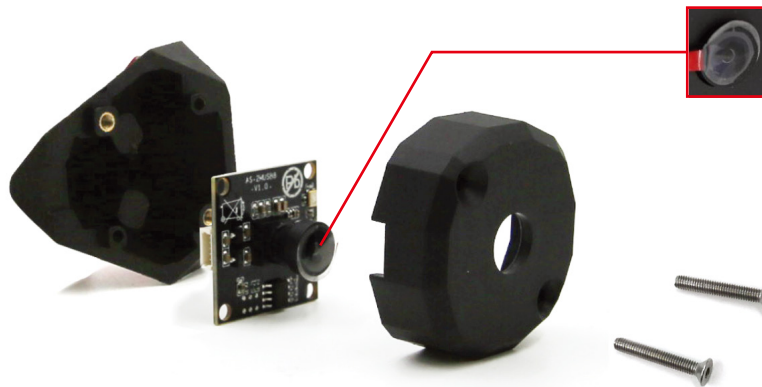
Pass the cable through the hole drilled before.  
Then fix the cable with adhesive mounts.

The suggested positions are marked in image below.



## Step 5: Open the Camera Cover

Open the camera housing, and remove the protective film from the lens.



## Step 6: Connect the Cable

Attach the cable to the port on the camera board, then reassemble the camera housing.



## Step 7: Tide Wires

Fix the redundant cable at the side of screen box with 3 pairs of adhesive mounts and zip ties.



## Step 8: Wiring

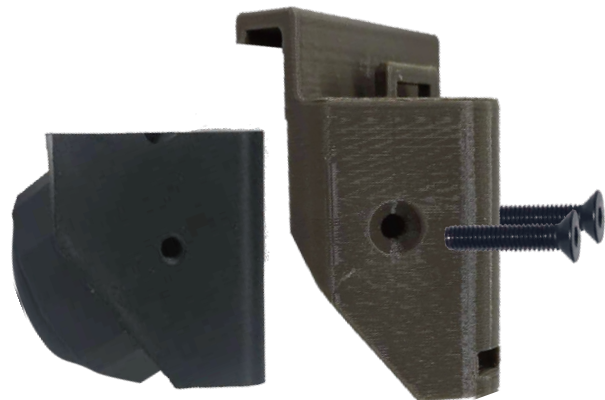
Connect the cable onto the screen USB slots..



## Version two

## Step 1: Fix Webcam Support

Use your printer to print the file name as “Webcam Support” under Examples in Ideamaker.  
Fix Webcam Support with camera using two screws.



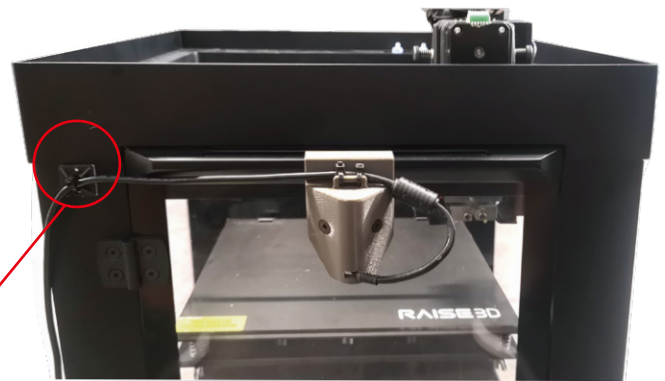
## Step 2: Route the cable

Pass the cable through the hole at bottom of Webcam Support and connect it with camera.



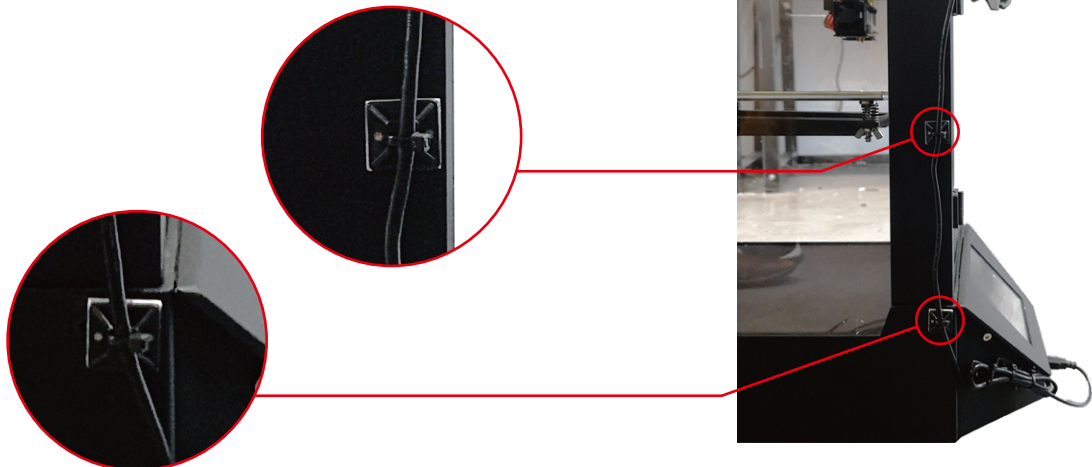
## Step 3: Install the Camera

Install the camera onto the door handle in middle. Then use the zip tie to fix cable on to the attached adhesive mount marked in image below.



## Step 4: Attach Remaining Mounts

Fix the cable at the side of machine based on the positions marked in image.



## Step 5: Tide Wires

Fix the redundant cable at the side of screen box with 3 pairs of adhesive mounts and zip ties .

Connect the cable onto the screen USB slots..



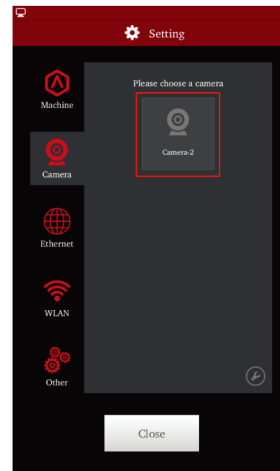
## Software Configuration

Update your RaiseTouch software to the latest version. This is available from the download center on the Raise3D website - [www.raise3d.com/pages/download](http://www.raise3d.com/pages/download)

## Step 9: Select Camera

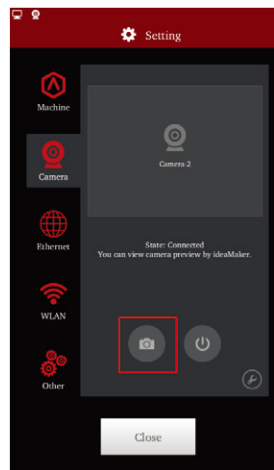
Open the 'Settings' icon located in the top right of your touchscreen menu. If the latest version of RaiseTouch has been properly installed, the 'Camera' tab will appear.

Select the Camera icon from this menu.



Press the photo icon to check if the camera is connected.

You should see a visual of the build plate on the screen.





## Timelapses

Once the camera is enabled, besides being able to monitor prints in real time from ideaMaker, it will also be possible to record Time-lapse videos. You can check these Time-lapses from the Dashboard.

### Step 10: Enable Time Lapse Features

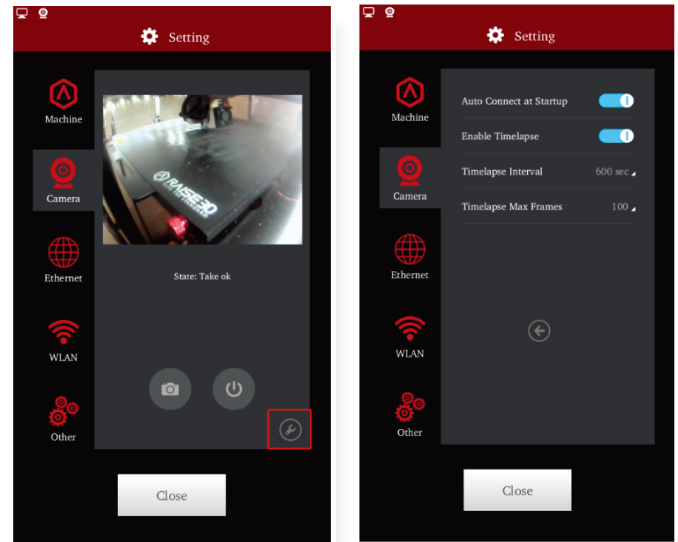
Press the tool icon in the camera page to edit time-lapse settings.

Enable 'Auto Connect at Startup' to enable the camera automatically after powering on.

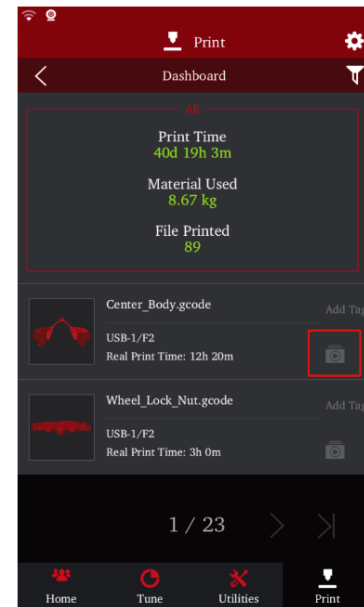
Select 'Enable Time-lapse' to record a time-lapse for each print.

The 'Time-lapse Interval' refers to the time between each image shot during printing.

'Time-lapse Max Frames' refers to the maximum quantity of images saved for one print job. When the maximum value is exceeded, the oldest image will be automatically deleted.



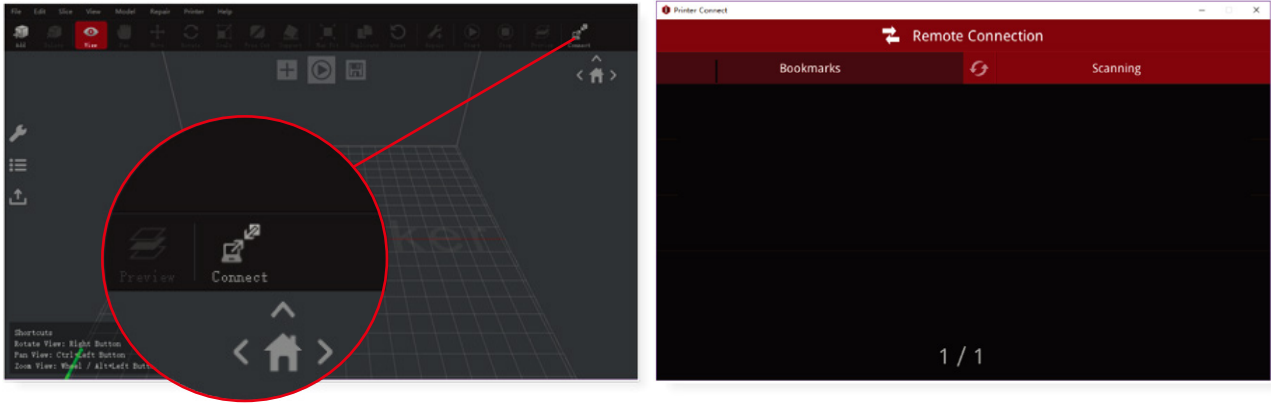
To playback a timelapse, open up the 'print' tab and press the playback icon



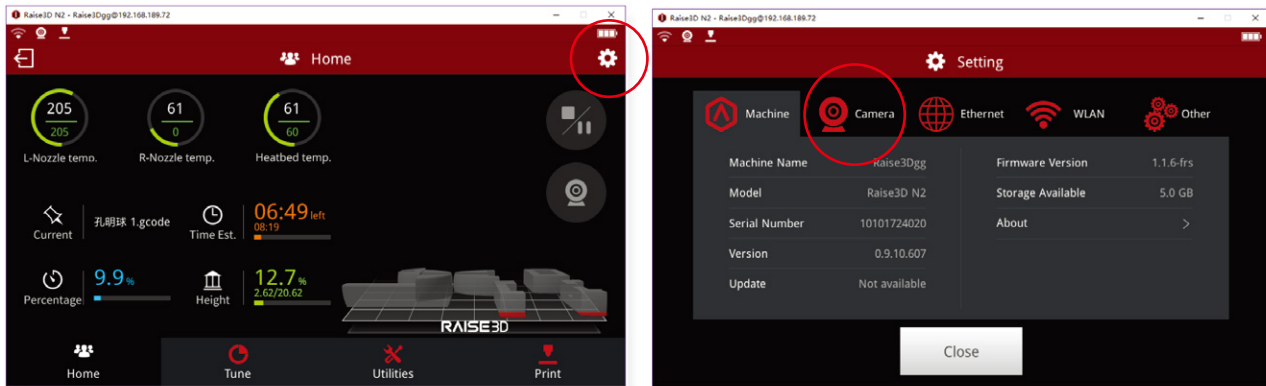
# ideaMaker Remote Connection

## Step 11: Connect

Click the 'Connect' button in ideaMaker to connect with your printer.  
(ensure that your printer and computer are connected to the same network)



Click the 'Settings' icon, then open up the 'Camera' Tab.



Click Camera icon to check the current print status.

