

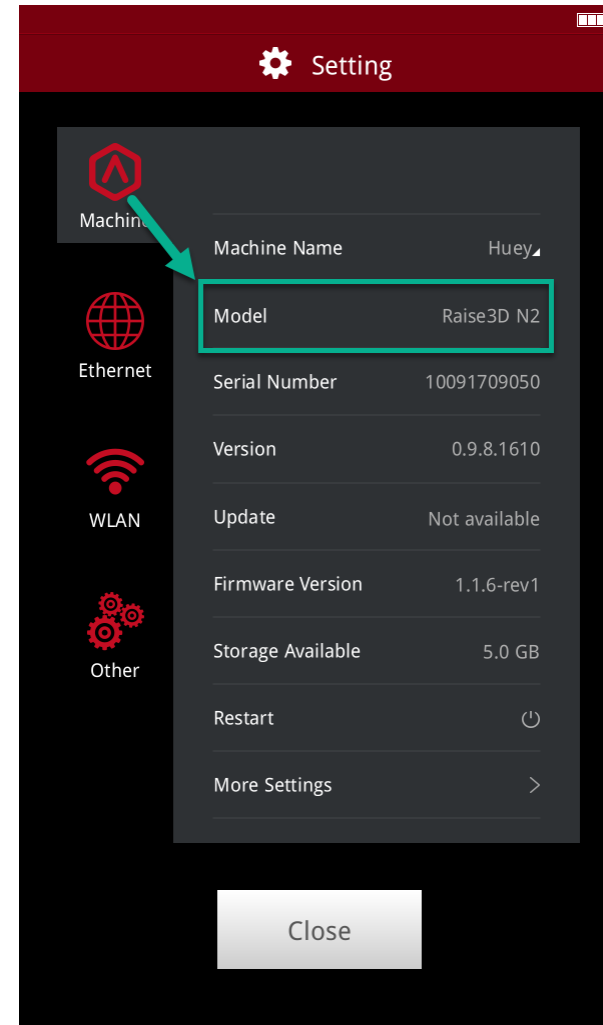
Motion Controller Firmware Update

Download the firmware

You will be able to find the firmware at <https://www.raise3d.com/pages/download>

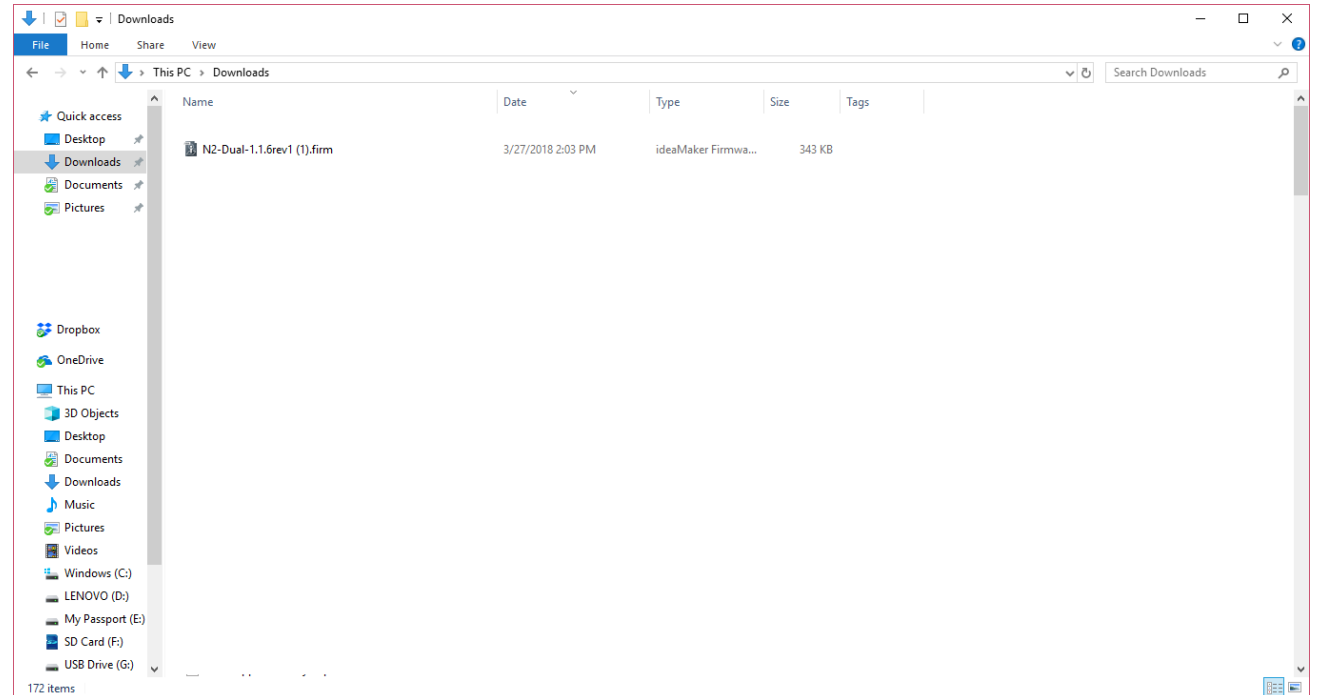
Download the firmware that matches your printer type.

To verify the model of your printer, you can go to the settings menu on the touchscreen and see the “Model” line.



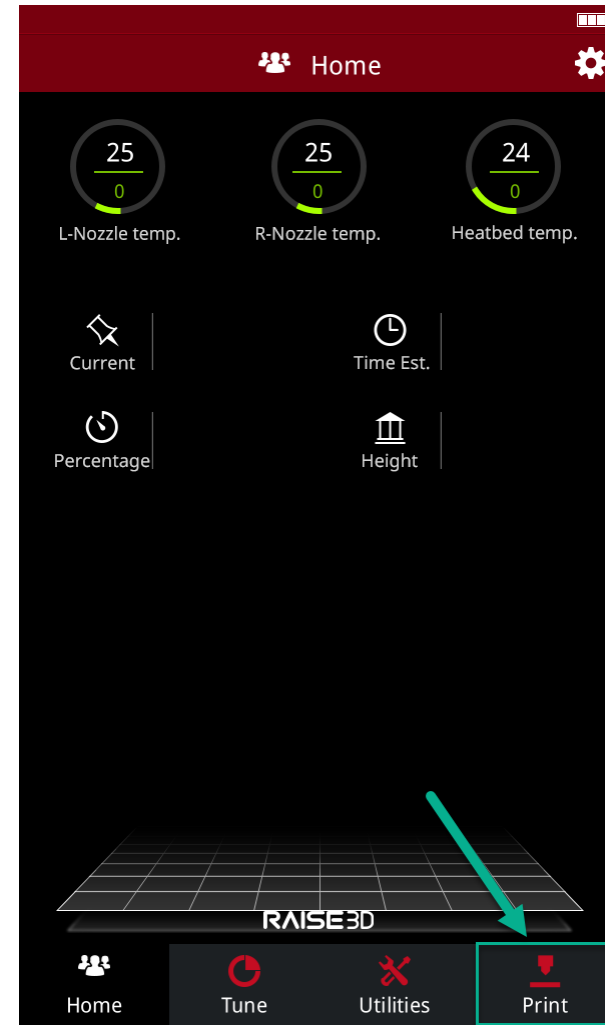
Saving the Firmware

Once the firmware is downloaded, transfer it to a USB drive and plug the USB drive into the printer.

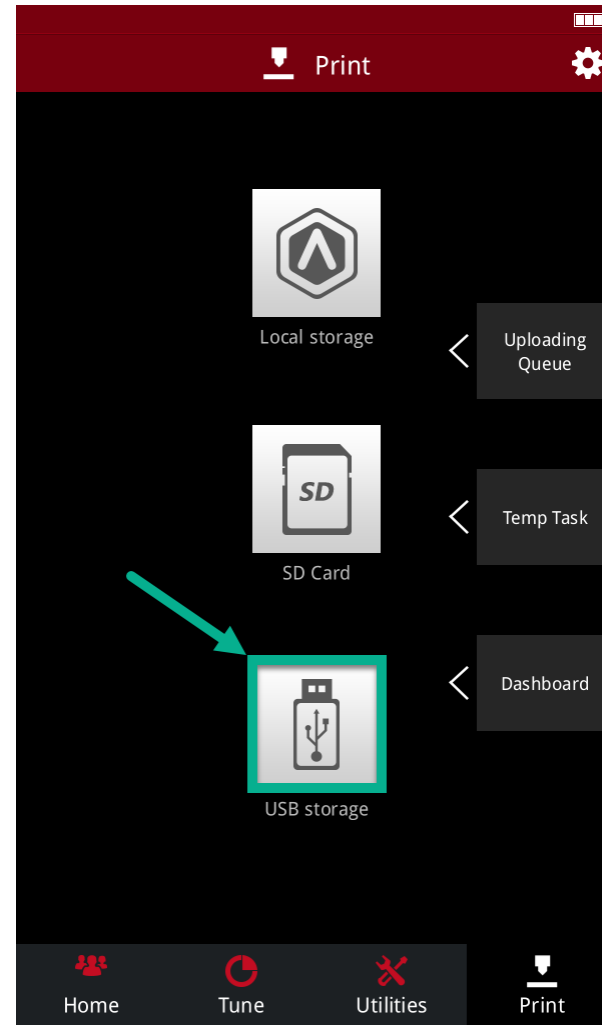


Start the printer up

From the home screen proceed to the Print Menu

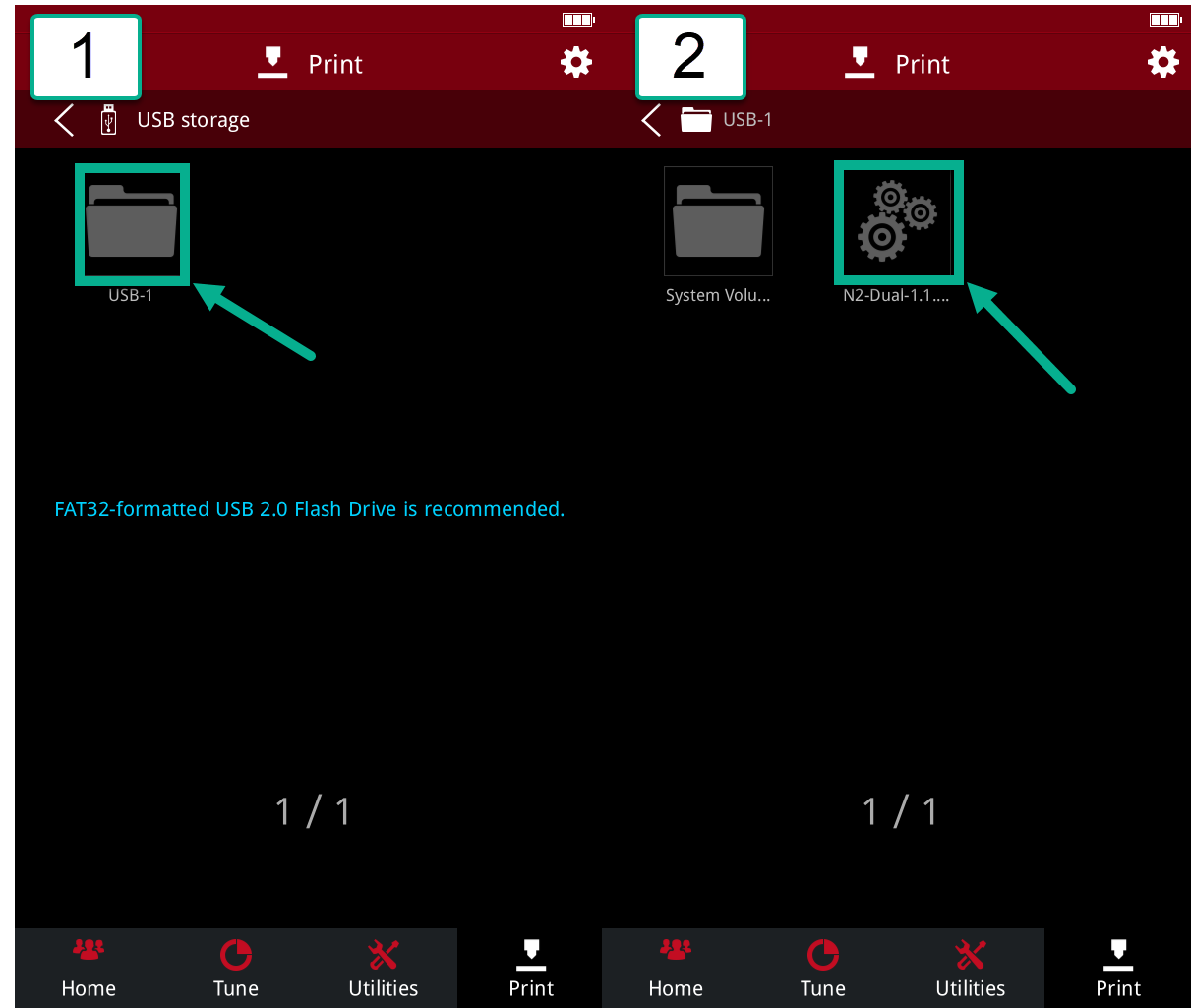


Select the USB Storage option.

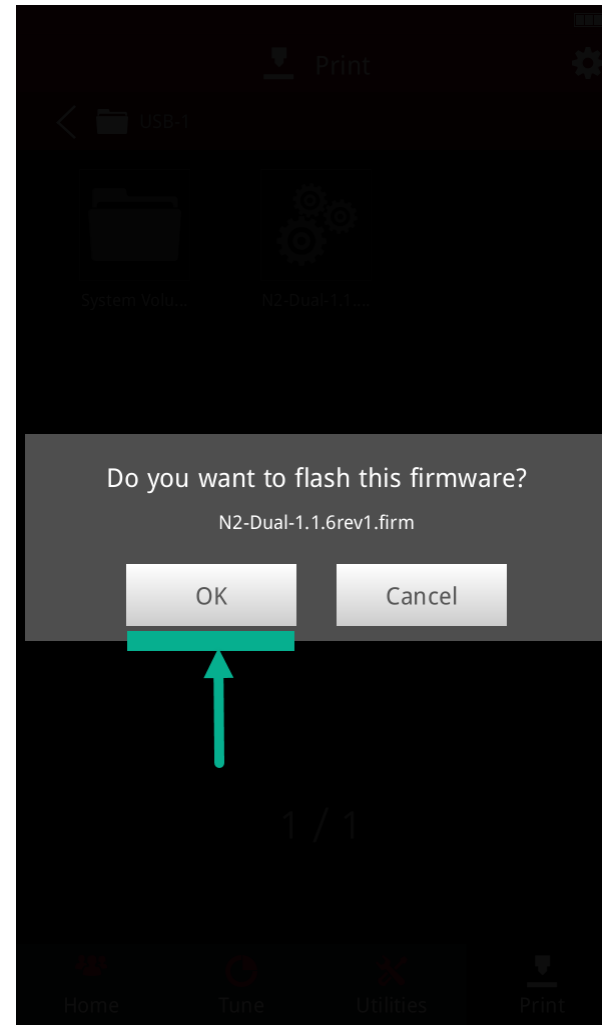


Select the USB drive with your firmware, inside the USB drive you will find the firmware file.

Select the firmware file as If you want to print it.



Once selected the screen will ask if you want to flash the firmware selected.



Verify the Update

To verify the update, go back to the Settings menu and see the firmware version matches the file used.

