

RÖVE

R



1



Contents

4-5
6-27
28-31

About
Lookbook
R1 Collection Index

About

ROVE is a jewelry and accessories line that specializes in designs with a clean and minimal style. We started this brand with the intention of offering beautifully designed jewelry without the conventions of traditional labeling. We're a gender neutral company that doesn't specify which designs are made for whom, because we believe that's not for us to decide. Rove is made for everyone.

We are a sustainable company that uses recycled precious metals for our core pieces and practice responsible manufacturing processes. We're committed to bringing you the best quality pieces for everyday wear. All of our products are designed and crafted in New York City.





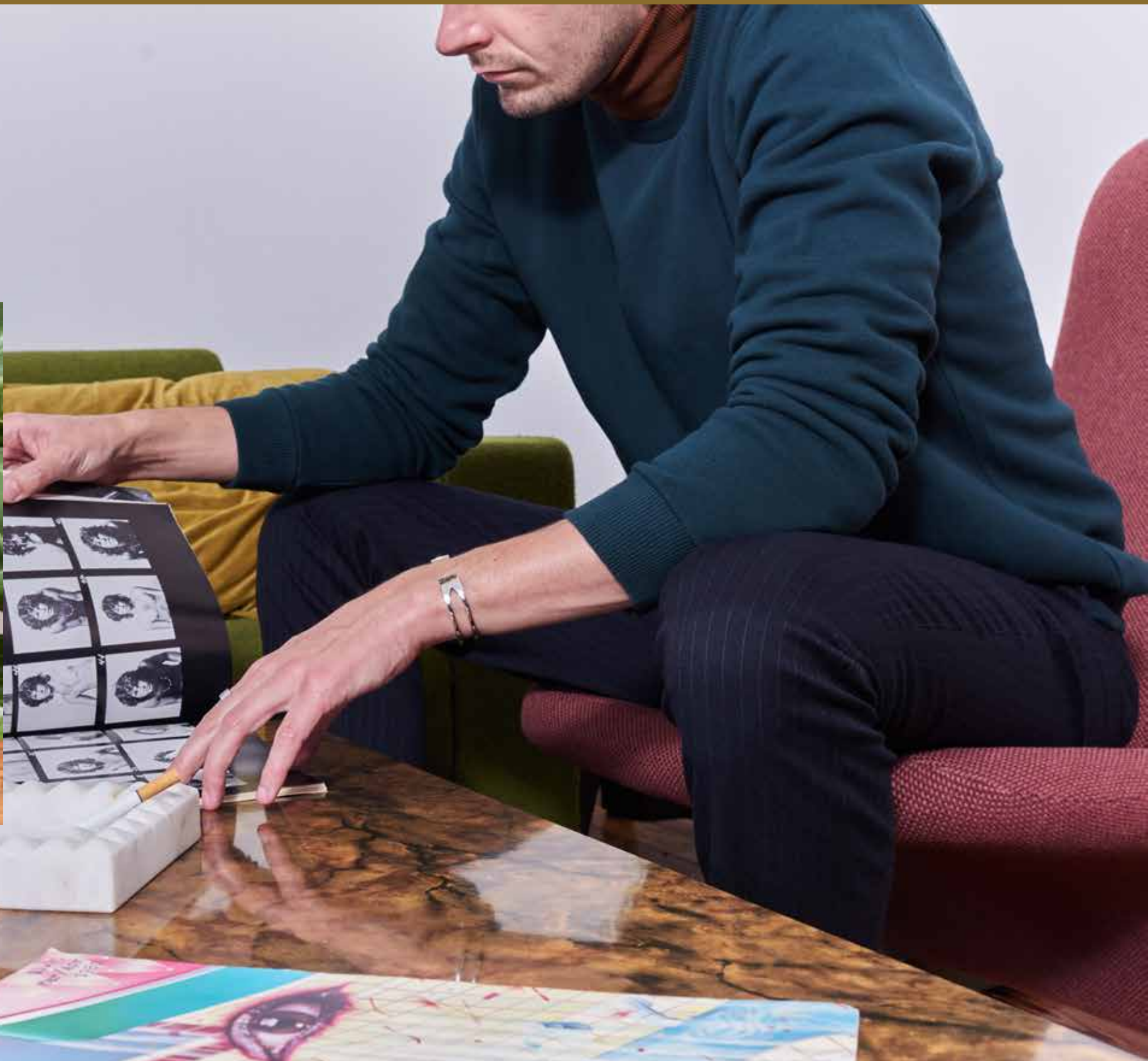




















Silver

- 1. Deck Ring
- 2. Arch Ring
- 3. Tapered Deck Ring
- 4. Lancet Ring
- 5. Tower Ring
- 6. Cable Ring
- 7. Tower Cuff
- 8. Lancet Cuff



Gold

- 1. Lancet Cuff
- 2. Tower Cuff
- 3. Deck Ring
- 4. Cable Ring
- 5. Tapered Deck Ring
- 6. Tower Ring
- 7. Lancet Ring
- 8. Arch Ring

Thank you

RÖVE

