



ART SHape

Art Without Barriers



www.artshape.co.uk

February Newsletter 2024

Welcome

Welcome to the February issue of our Art Shape newsletter.

Every month we will share our exciting updates, stories, and keep you up to date with everything Art Shape.

You can also find out about our new courses, and meet some of our current participants.

In this issue

Winter Warmers

We are creating an online Winter Cookery Book, and we need your help. Send us your favourite hearty, warming winter recipes and we will send you a shopping voucher!

Kate Townley is our **Numeracy Champion**. Find out all about National Numeracy Champions, and how you can get free support to feel more confident with maths.

We also meet one of our Scrap Art participants Ellie.



After a fabulous January session **Arts Inc** returns on **February 24th** with collage and illustrated pop-up scene making.

Join Art Shape at the Wilson Cafe in Cheltenham for fortnightly **Create and Connect** sessions for those with memory loss and their carers



Winter Warmers

**Bag your £20
Lidl shopping
voucher!**

We are putting together an online Winter Cookery Book and we'd love you to help us fill it with tasty meals.

Send us your favourite recipe by email and include an image to go with it - that could be a photo or artwork.

All recipes will be shared on our website and social media. When your recipe is added to our cookbook, we will send you your voucher by post.

**Register with Kate Townley
so we know where to send
the voucher!**

**There will be lots of yummy
recipes for you to have a go at
making, you could even use
your voucher to buy the
ingredients...**

This activity is funded through our
Multiply Programme.

Multiply



As part of Art Shape's involvement with the Multiply: Skills for Life programme, Kate Townley has recently undertaken training to become a Numeracy Champion!

You can get in touch with her on kate@artshape.co.uk to talk about resources you can access to improve your confidence with numbers as an adult and find out about what Multiply courses Art Shape are currently running.

Why not have a go at the National Numeracy Challenge?

It's a FREE website designed for adults who don't always feel confident with numbers.

Have a go today by clicking this link:

www.nationalnumeracy.org.uk/challenge

However you feel about maths, you're not alone!



Participant spotlight



This is Ellie one of our Scrap Art participants during her Friday Art Class at the Gloucester Resource Centre.

Ellie loves to use the colour pink and she always uses motifs hearts throughout her artwork which brings a lovely smile to Ellie and all her friends in the Scrap Art group.

**Keep up to date with our latest courses
by visting our website. Click the link:**

<https://artshape.co.uk/pages/courses>

On the Move

Thursdays

on Google Classrooms

Feb 22nd -March 28th

Winter Trees

Wednesdays

on Google Classrooms

Feb 21st - March 27th

Texture Relief Prints

Mondays

on Google Classrooms

Feb 19th - March 25th

3D Animals Revisited

Mondays

at the Art Shape Studio

Feb 20th - March 5th

10am - 2pm

Arts Inc

2024

ART SHAPE

Art Without Barriers

Studio day!

Saturday 24th February,
11.30-2.30pm
At the Art Shape studio,
Brockworth

Join us for a fun day of arts and crafts, no experience necessary. Make friends, explore your creativity, take part in workshops, or bring along your own projects.

Cost:£5



For ages 8-17 *we work with you in small, age appropriate groups. This month have a go at creating beautiful collage papers using a variety of techniques and creating a moving, pop up illustrated scene



To find out more,
contact harriet at
Art Shape on
harriet@artshape.co.uk
or call the office 01452
863855



Active Impact



Gloucestershire

This is an inclusive arts programme developed by Art Shape and designed by young creatives. Funded by Active Impact and the NHS One Gloucestershire ICS.

Arts Inc

Inclusive studio sessions

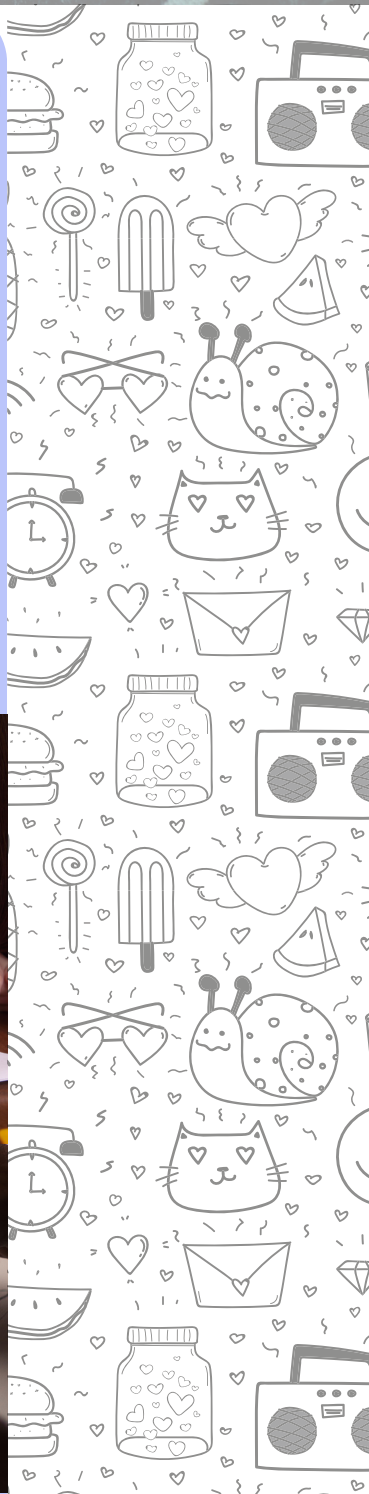
For ages 8-18

*we work with you in small, age appropriate groups

Every Month!

Each month we run fun creative sessions in our inclusive studio. Arts Inc sessions are a great opportunity to make friends, work on personal projects, and learn something new!

Explore your creativity in this relaxed and friendly environment. This month you can have a go at making drawings with charcoal and try out using watercolour paints.



Create & Connect



Creative activities for people with memory loss and their carers

Have you always enjoyed painting, drawing, other arts and crafts?

Or would you like to have a go?

Art Shape will be offering free places in a fortnightly group, meeting at:

**The Wilson Cafe, Clarence St, Cheltenham,
2024, 10.30 - 12.30**



For more information

Email charlotte@artshape.co.uk or

Call [01452 863855](tel:01452863855)

ART SHape
Art Without Barriers



Art Without Barriers

Support Us

Donation info



Art Shape is a unique and inspiring Gloucestershire charity. **We've been proud to work throughout Gloucestershire for over 30 years.** We strongly believe in the power of the arts to change lives and improve health and wellbeing - our vision is that all people can choose to engage with the arts as equals.

As a charity, Art Shape relies on donations and charitable funds to be able to reach the people we work with. Even a small donation can make a big difference and all donations are very gratefully received.

If you would like to make a donation to Art Shape

[Click here](#)
[to make a donation](#)

Follow us on social media



@ArtShape



@artshape_glos

**Art Shape, Brockworth
Court Farm,
Court Road, Brockworth,
Gloucestershire, GL3
4QU**

**e info@artshape.co.uk
t 01452 863855**

www.artshape.co.uk