



ART SHape

Art Without Barriers

Annual Report
2018/19

Contents

About Art Shape	1
Reflections from Elizabeth Ball - Chair.....	1
Chair's Report.....	2
Art Bridge Evolve.....	3-4
Adult Education	5-6
NHS: Arts on Prescription.....	7-8
Art Shape at Gloucester Carnival.....	9-10
Elevate.....	11-12
Inclusive Leadership.....	13
Of Course We Can.....	14
GEM (Going the Extra Mile).....	15-16
Enterprise Arts.....	17
Dementia Project.....	18
Creative Leadership Programme.....	19
Volunteering at Art Shape.....	20
Business Partnerships.....	21
VIA.....	22
Art Shape Team.....	24-25
Financial Figures.....	26
Partners.....	28
Funders.....	28





About Art Shape

Art Shape was established in 1992 and through work with individuals, groups, communities, organisations and partners has made significant steps in promoting everyone's right to creative experience and transforming the arts landscape across Gloucestershire.

Art Shape's vision is that all people can choose to engage with the arts as equals.

We believe in the power of the arts to change lives and improve health and wellbeing. We are committed to creativity and imagination, equality and access. We recognise individual value and worth built on mutual respect, warmth and integrity.

Reflections from Elizabeth Ball, Chair

The time since I was asked to chair Art Shape has passed so quickly. When I realised I had chaired for over 20 years, I thought 'that can not be right!' Art Shape, the people and the work inspire the sort of focus and commitment which distracts from passing time. Over the years, the world has changed enormously. Funding has got no easier. Need has grown as public services have contracted. A constant has been Art Shape's commitment to do good in the world, to use creativity to bring opportunity and to help people to make art to soothe and to challenge.

It has been an enormous privilege to be involved.

Thank you.



All of us at Art Shape would like to thank Elizabeth for her dedication to the organisation, it's team of staff and volunteers and all those who engage with the organisation. Her support has been unwavering through the good times and the not so good ones.

Thank you Elizabeth.

Chair's Report



It is with great pleasure that I present my first report as the new Chair of Art Shape. My personal thanks go to Elizabeth Ball, the outgoing Chair, for her dedication to Art Shape over many years. Hers are large shoes to fill and I will be on a steep learning curve for some time. Thank you Elizabeth.

It is a fact of life for the charitable sector that funding becomes ever tighter, and Art Shape is no exception. However through dedication and perseverance the Art Shape team has delivered a great range of programmes, which overall have reached over 2000 participants during the last 12 months. Notable highlights are featured in detail in this report.

Reaching out to Business: We have been active this year in spreading the word to businesses in the region and beyond about the resources and opportunities Art Shape offers, including training packages, team building and bespoke involvement in programmes. Art Shape was a core presenter at the 2019 Gloucestershire Business Show where it ran an event focusing on what businesses can do to support positive mental health in the workplace.

This range of exciting programmes is only made possible by the dedicated work of the staff, and associated artists and supporters, at Art Shape, and my thanks go to you all.

It has been an enormous privilege to be involved. Thank you.

Catherine Coates - Art Shape Chair



Art Bridge Evolve

Our third Art Bridge programme, a professional development programme designed by Art Shape for artists who face disabling barriers supported over 50 artists this year.

Participants were able to find a means of engaging in the programme that suited their circumstances either:

- Via a face-to-face programme of workshops, artist talks, shared studio use, mentoring, exhibition and networking opportunities.
- Via an online programme of modules, mentoring and exhibition opportunities, with the option to attend selected workshops and talks.

Talks and workshops were delivered by high profile artists who face disabling barriers such as Tony Heaton, Zoe Partington and Jon Adams. Our artists were **inspired** and **motivated to try new things and do things in new ways**:

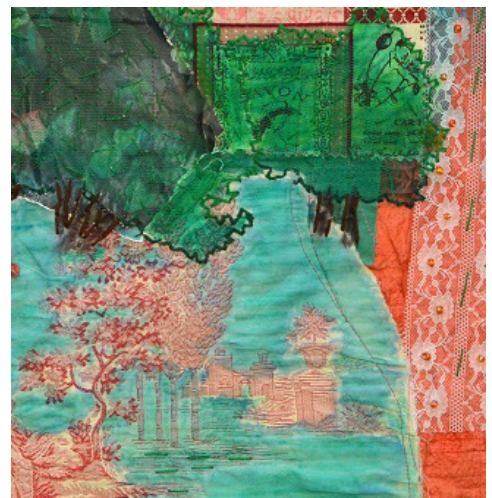
“I finally began to sit and work on my artist statement. I felt very fortunate to have some feedback from Tony Heaton”

Dr Jim Brook returned as our artist in residence and many voiced appreciation of having a resident artist throughout who was ...

“very insightful, knowledgeable and supportive”

Artists *Adam White*, *Alley Stallard*, and performance group, *Hand in Glove* were commissioned to produce work for exhibitions and share their practice with the group.

Top: Section of ‘Duck in the Park’ textile piece by Tracy Edwards
Bottom: ‘Self Portrait’ by Jackie Drinkwater





Artists realised their ambitions to reach a wider audience with their art work via three exhibitions with partners Stroud Museum in the Park, SoMAC (Summer of Music, Arts and Culture) and Gloucester Cathedral. (This last covered by BBC Points West).

This year long programme took artists on a journey that increased artistic practice, professional skills, confidence and wellbeing.

“It’s made me realise I can do more than I used to think”

“I now have more of a sense of myself as an artist”

Artists from the programme have gone onto to form their own collective, continuing to meet regularly and are currently investigating a shared studio space.

Art Shape continue to fund raise for a further Art Bridge as we have evidence through evaluation how life changing this programme can be.



Top: 'Lures of the Landlocked' by Adam White
Bottom: 'Sirens' by Julie Green

Adult Education

Art Shape has continued to work closely with the commissioning team at **Adult Education in Gloucestershire** to provide a hugely diverse program of educational opportunities in accessible venues throughout the county. Together we have aimed to respond to the needs of the communities with whom we work and to establish and support practicing artists in their fields as tutors.

We run a number of learning programmes that focus on a wide range of outcomes for our learners.

Our **Community Learning** provision focuses on maintaining and increasing people's independence skills, enabling them to make choices of their own in a creative learning environment.

The aim of our **First Steps** Programme is to provide people with an opportunity to learn new skills and to build confidence that will enable them to access further learning opportunities.

Our **Employability** provision provides a creative approach to gaining key employability skills that will support people as they explore work and volunteering opportunities.

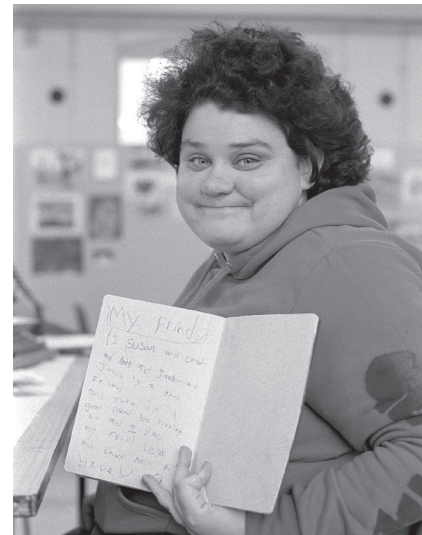
We also provide a number of unique projects through Adult Education **Local Flex** funding. The projects are ambitious and aim to provide learners with an opportunity to make an impact on their local communities. Projects such as a **Tale of Two Cities** and **The Power of Art** have provided ways in which learners can connect with others in their community, sharing their knowledge and lived experience to promote the benefits of engaging in the arts and adult education.





Courses across all programmes provide learning opportunities in both visual and performing arts. By design, we aim to link our programmes to opportunities and events in the local community.

Congratulations to learners on our **Phoenix Drama** and **Via Dance** courses who successfully competed in the Cheltenham Festival of Performing Arts. Learners from our **Showtime** drama course have also performed at the Gloucester Carnival and devised their own show that was performed to the public at the Gloucester Museum.



Learners across our programmes have also participated in a number of public exhibitions. Leonard Cheshire learners put on their own, hugely successful exhibition at Christ Church in Cheltenham, with the support of their tutor Mike Carter.

Learners have also exhibited their work in the Cheltenham Open Studios, Christian Arts Festival, at the Gloucestershire Resource Centre, Nelson Trust Hub Café and Gloucester's Community Bookshop. They have designed and made costumes for other learners to wear, face painted carnival participants, planned and run their own market stall, volunteered at events and much, much more.

Partnerships

We have continued to develop our working partnerships with a wide range of organisations. Our partnership with **Inclusion Gloucestershire** has again proved incredibly successful and we continue to work with **The Recovery College** in partnership with **NHS 2Gether Trust**, offering courses that enable learners to move forward as they recover from a variety of mental health issues. We have also provided many courses with our partner organisations.

NHS Commissioning

Art Shape and **Cinderford Artspace** are working together with the **NHS Clinical Commissioning Group** to offer Arts on Prescription activities for young people in Gloucestershire. Arts on Prescription are a type of social prescribing where someone with a specific long term condition, such as epilepsy or diabetes, can be offered to join a group based creative activity which has been specially designed with the collaboration of the young people, the arts organisations, parents and clinicians. These programmes offer an opportunity away from clinical settings to support self-management of condition, confidence & emotional resilience for those living with long term conditions.

In September 2018, we started working in partnership with Artspace to provide a year's programme called **Flying High**, working through circus, dance and art to create a bespoke programme for young people with type 1 diabetes.

The young people choose the art forms they wish to explore, they are encouraged to set creative goals and to reflect on their progress within the group supported by trained practitioners.





We have around 16 young people engaging with the programme, we have seen them flourishing and becoming more confident in managing their diabetes through engagement with the creative activities, supported by the expertise and care of Art Shape and Art Space practitioners.

Towards the end of this year's provision, the young people created their own 'Diabeasties', imaginary creatures with special powers. We helped them develop costumes based on their creatures and a 'Diabeastie' dance routine, lots of rehearsal led to a wonderful presence parading at Gloucester Carnival in July 2019.

Art Shape and Cinderford Artspace are currently working on the next phase, working with young people living with epilepsy.

We would like to thank all our wonderful artists at Art Shape and Art Space, who have worked so tirelessly to create this amazing programme and great outcomes for the young people.



Sally Gibson, Caroline Tate (project managers), Karen Perrins (dance), Catrin Garland (dance), Bee Kirkwood (circus), Nix Barnaville (Circus), Amy Iles (art), Kate Townley (art), Bela Kielt (ceramics and art).

Art Shape at Gloucester Carnival

Art Shape has a long tradition of taking part in the Gloucester Carnival, in 2012 the Carnival Arts Partnership (CAP) was formed with other organisations interested in the advancement of Carnival.



Our work includes:

- Artist residencies and support packages for community and school groups
- Training, mentoring and coaching for local artists (including those who face disabling barriers)
- Sharing of practice with other local and national arts, carnival and community organisations
- Advancement of inclusive Carnival practice, enabling a wider diversity of disabled people to engage in Gloucester Carnival

“My favourite part was when all the crowd joined in!” Dragon group dancer



This year CAP received funding from the Arts Council to run a Carnival programme that included support for local groups to realise their Carnival ambitions and training, mentoring and coaching for 6 trainee Carnival artists. This all happened at a Masquerade Camp – set up in the Olympus Theatre Barton Street. We had master classes in using sustainable materials from artist Simon Tipping and the art of Masquerade from Mandinga Arts.

Art Shape's Amy Iles was one of the Trainee Carnival Artists who worked with the Flying High group to help produce the Diabeasties procession. Flying High is the arts on prescription programme for young people with type 1 diabetes, commissioned by NHS Gloucestershire and jointly managed by Art Shape and Cinderford Artspace. The young people made collages and drawings of their Diabeastie creatures and these were recreated into Carnival costumes. Artspace circus artists supported a young person to process on stilts and sculptor Matthew West created a giant Diabeastie. An amazing time was had by all!

“It was really fun. I got to go on the stilts, which was really good. And all the Diabeasties looked really fabulous with their helmets and all their stuff on.”

Diabeastie



Flying High Diabeastie Group

“The carnival was fantastic. The sun shone. It was quite hot. Tilly’s sugar levels were quite low but it didn’t matter, they had the tent set up here and they also had the horsebox to carry all their gear and everyone was checking in. And I loved the fact they had this whistle system to communicate to check that they were ok. And if they weren’t it was thumbs down and if they were it was thumbs up, you know, and then someone would take them out if they weren’t ok. All of that was just so reassuring that it didn’t matter where she was, she knew someone was around and she could have fun just being herself.”

Parent of a Diabeastie

Elevate

Arts Council England (ACE) set up the Elevate fund to improve the resilience of organisations making a significant contribution to the Creative Case for Diversity, to encourage an increase of diverse led organisations within the National Portfolio.

“Diversity and equality are crucial to the arts and culture because they release the true potential of our nation’s artistic and cultural talent – from every background. Our diverse nature offers unique opportunities for artistic and cultural collaborations and innovation.” ACE

GDance was originally awarded an Elevate grant to lead a programme of work in partnership with Art Shape. Following the closure of GDance leadership of the programme transferred to Art Shape.

Art Shape continued to work with and through the Arts Inc partnership, which had expanded its partnership in Year 1, and redefined itself (since its foundation in 2012) to be:

“a non-judgemental ‘space’ for peer and leadership support – where, as disabled and non-disabled professionals, we question, share and reflect on our experiences and learning. We support each other to: Improve / extend inclusion of disabled participants and artists and embed The Creative Case more broadly across Gloucestershire’s arts sector”

The programme aimed to:

- Increase the resilience of county arts organisations that share a mission around disability and diversity
- Enable partners to become more disability confident
- Increase confidence, skills and networks of disabled artists and inclusive arts leaders
- Support continuance of inclusive dance in the county (following the closure of GDance)

Three integrated teams researched and developed artistic artwork, some in partnership.

We worked with Stroud Valleys Artspace (SVA) to host **AIM's Tea Service**: this Spike Island (Bristol) based group of artists created a tea service incorporating their own artworks at John St Gallery, SVA. A diversity of other disabled and non-disabled artists, curators, producers and arts curators were invited to join AIM; to bring and share their own artwork and to engage in conversation, workshops, tea and cake. Workshops included writing, spoken word, plate design and drawing.

Louise Brown's 'Pitch Up': Louise worked with an integrated team to research and develop a piece of outdoor dance theatre with accessibility built in from the outset. This included working with a palantypist, audio describer and mentor (theatre-maker from TwoCan Inclusive Theatre and Graeae Associate Nicola Wildin).

Hand in Glove's 'Docking Station': The company led by Jim Brook, an artist facing disabling barriers, uses a playful approach using back-stories, fragments of dialogue, set elements, lighting, props and costume to establish the structures through which gestures, motion and choreography emerge. It is an approach that draws on individual performers' possibilities and improvisation. The company worked with Arts Inc member (an emerging disabled actor, writer and director) Scott Peacock for the first time.



Photo Credit: Jonny Molsen and Suzie Birchwood in Louise Brown's 'Pitch Up' (photographer: Jack Offord)

Activities Included:

Inclusion & Access Self-Assessment framework and tool was developed to be fit for purpose for cross-arts.

Inclusive Leadership Course was reshaped in response to our 2015 evaluation.

Arts Inc resource base was established to support ongoing cross-organisational peer learning and development around disability and inclusive practice.

Maintaining an inclusive dance focus in the county supported by the setup of a new company Dance Unstuck.

The Elevate and Art Bridge Evolve programmes culminated in a dissemination and consultation event 'Odyssey' held in Gloucester Cathedral in January 2019.



Inclusive Arts Leadership

Art Shape's Inclusive Arts Leadership accredited course provided students with an opportunity to not only develop their leadership skills but to increase their understanding and awareness of social diversity and inclusive practice.

Students from a variety of arts disciplines, working in a diverse range of creative industries were able to access this blended learning model over a period of fourteen weeks. The course provided face to face training opportunities with expert guest speakers, professional mentoring and one to one tutor support plus on line access to course content and learning resources.

Students used work placements to put into practice what they were learning and were supported to reflect on their developing skills and identify how they could continue to improve their practice. This blended model allowed for a wide range of learning styles and was assessed accordingly, reflecting the learning needs of each student. This course was accredited by Open College West Midlands with all learners achieving a **Level 3 qualification in Employability and Leadership Skills**.



Of Course We Can

Art Shape have continued to work with **Active Impact** to offer inclusive holiday activities for young people with and without disabilities.



Our latest offering was A Passion for Fashion where young people joined us for a week of fabulous fashion designing and upcycling of garments and accessories.

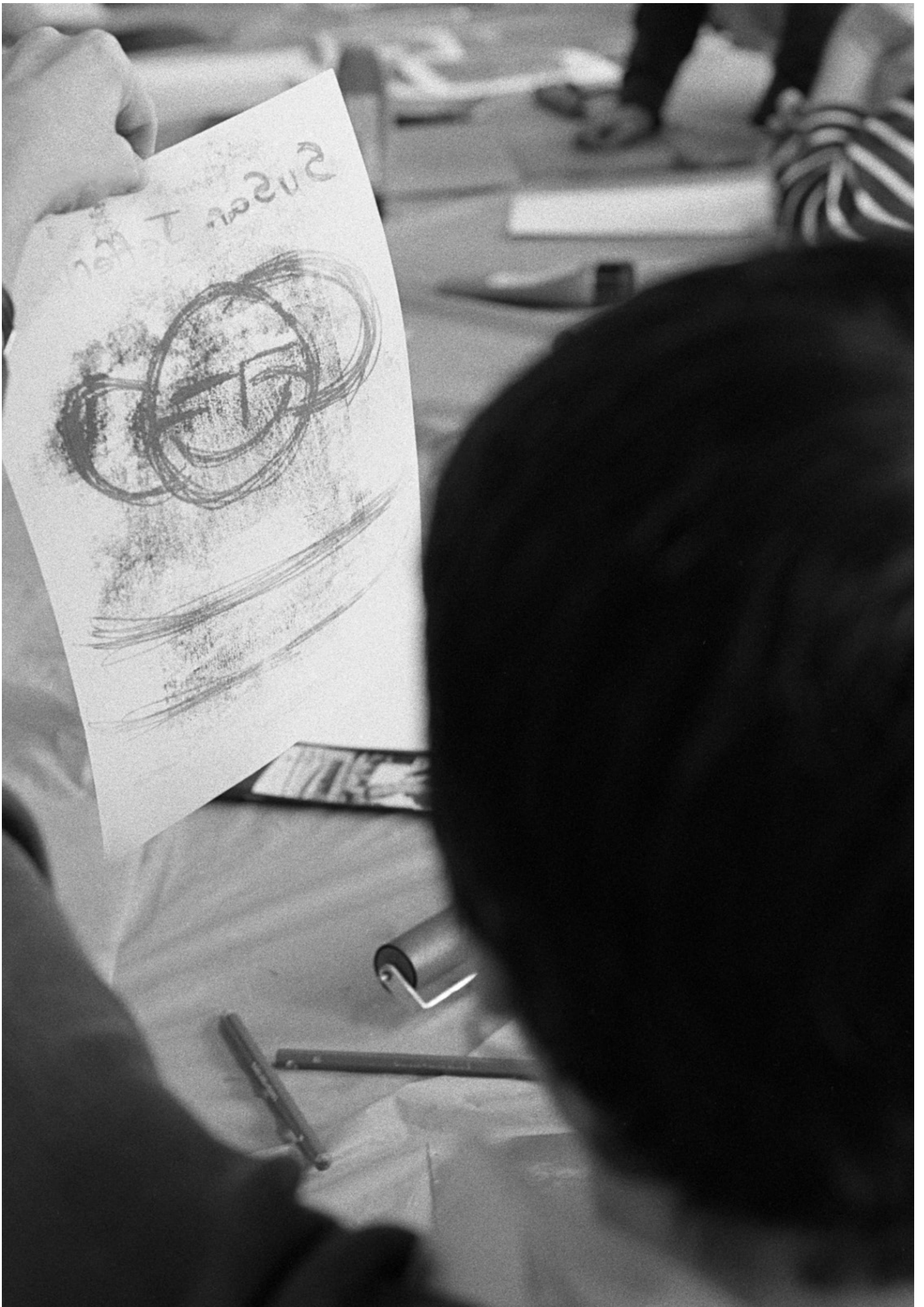
We used a variety of textile design and alter techniques which included cutting and sewing, distressing, stencilling, felting, printing, embroidery, dyeing, painting and batik.

On the final day we had a photo shoot and experimented with hair and makeup tricks and tips, then strutted the catwalk at St Mary's Decrypt.



We also have Tricks and Treats Make A Music Video residential planned for October and Heroes and Villains a STEM and film project planned for the Easter 2020.





Going The Extra Mile

Art Shape is proud to be a partner in the **Gloucestershire Going The Extra Mile (GEM) Programme** which aims to engage with and support individuals in Gloucestershire who are currently dealing with circumstances that are potentially causing barriers to work. GEM supports people move closer towards education, training, volunteering or work, including self-employment.

This programme is a unique partnership of community-based organisations, managed by **Gloucestershire Gateway Trust** on behalf of **Gloucestershire County Council** and is funded by the **Big Lottery Fund and the European Social Fund**.

Participants in the programme receive personalised 1-1 support, building confidence, self-esteem and motivation. They develop skills and qualifications, access training and work experience opportunities and move closer towards education and work.

Participants are supported to reach their individual goals and each has a very different set of ambitions. We have people who are starting to produce their own artwork for sale including a self-employed portrait artist, a self-employed creative catalyst coach, one participant who started writing a book whilst on the programme and another who has had support to set up a clothing company for children with Downs's syndrome that embraces their individuality and body shapes. We have supported individuals to gain the confidence and motivation to go into further training both at college and on bespoke work experience placements in retail, building societies and garden centres.



'Deer' by Julie Green



'Eye of the Storm' by Judy Reynolds

“My mental health has improved since being on the GEM programme. Being around people where I can be myself and use my creativity is like a breath of fresh air. Days are still a struggle but I am determined to use my creativity to spread happiness and keep as well as I can.”

“I find the GEM Programme very good and inspiring. The information is valuable and makes things easy to access. I feel less daunted by being an up and coming artist”

“I had some great experiences on the GEM Programme and lots of support from a fantastic Navigator Developer. Through events like The Cirencester Art Exhibition and New Horizons at Gloucestershire Airport project, I have been able to improve my art and my Graphic design skills and step out of my comfort zone.”





Enterprise Arts

We were delighted to receive funding from Nat West's Skills and Opportunities Fund to run Enterprise Arts. This new programme allowed us to create an enterprise hub to support emerging artists with disabling barriers to develop business skills through a programme of professional training and 1-1 support and mentoring.

Training and coaching included website design, branding, using social media, gallery representation, pricing and selling work, product development, business planning and an introduction to book keeping.

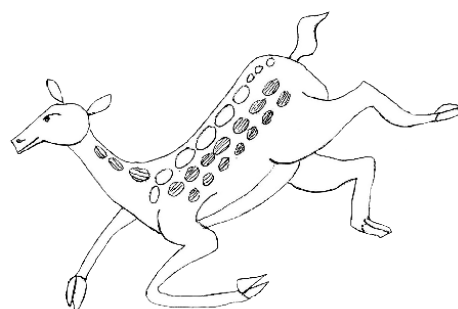
“Thank you for helping me with my business planning, you have helped me to move away from my natural negativity and see myself in a new light.”

“Art Shape has been my lifeline this year – I really feel like I’m getting somewhere.”



The project also allowed Art Shape to explore ways to diversify our income through the production of retail products that feature and showcase the talent of our artists.

Our talented community of artists have produced art work and allowed us to use images to be developed into products. We now have a range of unique and beautiful giftware for sale in our online shop. We have also had an encouraging meeting with buyers from Gloucester Services who want to stock some of our range. These are exciting times and this an area of work that we are pursuing.



Dementia Project

The **Art Shape Dementia Project** is a fortnightly art group for people living with dementia and their carers. These sessions provide opportunities for people living with dementia and their carers to learn new or develop existing creative skills, increase overall wellbeing and to meet with others on a regular basis.

Artist Alison Cockroft and assistant Karen Rose have been delivering engaging, creative sessions with a welcoming and relaxed approach at the Gloucester Resource Centre. Alison guides participants to explore a wide range of techniques, including watercolour, printing, drawing, collage and textiles.

Their sessions also involve one to one tutoring, creative activity and a tea break where the group catch up with one another and reflect on their work produced throughout the morning.

We have been delighted to watch the group grow in confidence and their artistic skill has flourished, resulting in the creation of beautiful, intricate and bold artwork from every member of the group.

The group have shown improved memory function, more positive outlook, improved concentration and increased enthusiasm. It has been a valuable time for families to come together for quality time.

“It’s good having ‘something in the diary’ to look forward to.” Participant



“My Grandma has increased confidence, is more motivated, inspired and continues the creative activities between sessions, at home.”

Participant’s family member

We would like to thank Jean Humby, Rachel Stephens and Lee Hawthorne from the Alzheimer’s Society who have supported Art Shape by providing dementia training, sharing their expertise and referring people to the group.

We would also like to give huge thanks to the generous groups and individuals who have fundraised and donated time and money to fund this project. This includes The Churchdown Male Voice Choir and their guests from Norway, the Sandneskameratene MVC who performed at the annual charity concert, organised by Jean Humby and supported by numerous volunteers.

Creative Leadership Programme

This year, **Art Shape** had the opportunity to be part of the **Creative Leadership Trainee Programme**, created by **Gloucester Culture Trust** and funded by **Gloucester's Great Place Scheme**. The aim is to create a core group of creative people who work and learn alongside 4 of Gloucester's leading creative organisations, with additional training opportunities, to transform into future leaders who will be able influence the cultural development of the city.

Kat Purchase joined us in May and has been able to work as part of the **Carnival Arts Partnership** on Gloucester Carnival assisting the producer and photographing the event, working and developing skills with the Art Shape team on various projects such as **Gloucester History Festival, Flying High** and **Of Course We Can** and helping core **Arts Inc partners; Dance Unstuck** and **Your Next Move**.



“It has been such a fantastic opportunity for me. I have been able to learn such a variety of different skills, while also utilising a lot of my own talents. I have had the opportunity to be a part of some fantastic events and workshops where I have been able to network with other creative people and organisations in Gloucestershire.”

Kat Purchase

Volunteering at Art Shape



This year we have seen a steady stream of new volunteers who, alongside our longstanding volunteers, have added to a growing pool of wonderful people dedicating their free time to support Art Shape. We now have over 30 regular volunteers who support our tutors/artists within our many courses, workshops and projects.

Art Shape's Nina Kirkwood and Harriet West have given talks at both the **University of Gloucestershire** and **Stroud College**, as a result we have had more students placements than in previous years - and they have proved to be a wonderful short term addition to our programme. A couple of these have stayed with us past their placement end to continue volunteering with the groups they worked with.

Art Shape are now a member of the online volunteering service: **Engage in Gloucester, Volunteer Makers**. This online service allows heritage and arts organisations to advertise a large variety of volunteer opportunities. Aspiring volunteers can then create a profile, adding their interests and skills which will match them to participating organisations. Through this online database we have gained some new volunteers and been able to advertise to a wider audience than in the past.



Volunteers are an integral part of what we do and we would not be able to support as many participants as we do without their time and commitment.

If you are interested in finding out more about volunteering with Art Shape please either ring the office or email kate@artshape.co.uk.



Business Partnerships

We are able to offer businesses a wide range of opportunities. From training packages for staff in inclusion and disability confidence, teambuilding workshops and improving staff well-being in the workplace to bespoke marketing packages available in return for sponsorship of specific programmes.

Art Shape has increasingly been working together with local businesses in recent years. Partnering with a charity is good for business. It shows a commitment to the local community and demonstrates the businesses commitment to being ethical. It can also offer volunteering opportunities for personnel encouraging self-development.

We also have a diverse range of products available for purchase featuring our artists' work and can create public art and exhibitions for business premises and spaces.

There are many different ways in which a business and its team can get involved with Art Shape. To find out more contact the office to talk through our business information pack.



Let's work together.

VIA



A Community Inclusive Intergenerational Dance Company which consists of wheelchair users, learning disabled dancers and non-disabled dancers.

VIA was started over 10 years ago by GDance and still contains some original members who love coming to the inclusive group. Karen Perrins leads VIA and is proud to be their Choreographer and Artistic Director. Karen has a passion for Inclusive Dance coupled with a desire to promote inclusivity within the dance and arts sector. VIA is about everyone being able to participate in dance and enjoy being part of a group.



VIA love to perform and this year won 2nd place for the Vivian Barr cup at the Cheltenham Festival as well as performing at Gloucester Cathedral. They also perform at Gloucester Carnival each Summer and have featured on broadcasts such as “The Strictly” live on BBC’s The One Show and ‘A Life Without Downs’. We are very lucky to have a wonderful band of volunteers who help support VIA both in the weekly sessions and at performances.

VIA offer a **unique sponsorship opportunity** to businesses whereby marketing packages can be bought offering funding to the group for their ongoing rehearsal costs. If you are interested in finding out more about this opportunity please contact Lucy at the Art Shape office.



The Art Shape Team

The Office Team:



Lucy Garrett
Managing Director



Hazel Godden
Finance Manager



Caroline Tate
Project Manager



Nina Kirkwood
Education Manager



Harriet West
Project Manager



Donna Marshall
GEM Navigator Developer



Kate Townley
Education Co-ordinator



Carla Bull
Education Assistant



Amy Iles
Project Co-ordinator



Kat Purchase
Creative Leadership Trainee



Art Shape recognises that its work could not, and would not, be successful without the support and involvement of many people and would like to thank everyone associated with the organisation for their enthusiasm and dedication. These include:

Board of Trustees

Elizabeth Ball - Chair
Catherine Coates - Chair
Hilary Paskins - Secretary
Pat Roberts
Joanne Callaghan
Andy Carter
Jim Austin-Jones

Artists

Adam White
Alison Cockcroft
Alley Stallard
Amanda Eady
Amy Freeman
Amy Iles
Andy Clay
Anna Kendry
Art In Motion
Bee Kirkwood
Bela Kielt
Ben Wright
Carla Bull
Caroline Tate
Catrin Garland
Charlotte Hawke
Chris Chelliah
Dave Seed
Donna Marshall
Emily Hastings
Gemma Bolwell
Gemma Woods
Halima Malek

Hand In Glove
Harriet West
Helen Scarborough
Helen White
Jim Brook
Joanna Teague
Jon Adams
Karen Perrins
Kate Townley
Lee Holder
Lisa Turner
Louise Brown
Louise Jenner
Lucy Gresley
Mandinga Arts
Matthew West
Michèle Taylor
Mike Carter
Nicola Wildin
Nina Kirkwood
Nix Barnaville
PJ Crook
Russell Haines
Saffy Snell-Pym
Sally Gibson
Sarah Blowers
Simon Tipping
Steve Smith
Sue Baldwin
Tony Heaton
Warren Day
Zoe Partington

Assistors and Volunteers

Abi Baldwin
Alan Snodden
Ally Goff
Barbara Sear
Bethan Marriott
Beverly Ayliffe
Claire Smith
Eloise Hopkins
Freya Tate
Gail Anderson
Hannah Baldwin
Holly Gibbs
Jackie Drinkwater
Jag Metha
Jasmine Foister
Jen Melton
Jean Humby
Julie Green
Karen Rose
Kay Bartlett-Young
Kelly Peattie
Kristina Lewis
Lex Howard
Matt Frith
Milan Carney
Paula Jackson
Pippa Gordon
Rebecca Creed
Robert Hack
Sophie Prewer
Sue Perry
Tom Griffiths
Victoria Gabb
Viva O'Flynn



Financial Figures

Statement of Financial Activities for Art Shape Ltd
for the year ended 31st March 2019

	Unrestricted Funds 2019	Restricted Funds 2019	Designated Funds 2019	TOTAL Funds 2019	TOTAL Funds 2019
Incoming Resources					
Voluntary Income	695	2,150		2,809	850
Investment Income	1,305			1,305	819
Incoming Resources from Charitable Activities					
Grants and Contracts		300,315		300,315	223,644
Other Incoming Resources					
Sundry Income	17,004	9,900		26,904	19,779
Total Incoming Resources	18,968	312,365		331,333	245,092
Resources Expended					
Cost of Generating Funds					
Unallocated Operating Costs	16,586			16,586	13,844
Charitable Activities		312,317		312,317	218,378
Governance Costs	2,332			2,332	1,920
Total Resources Expended	18,918	312,317		331,235	234,142
Net Incoming/Outgoing					
Resources before Transfers	50	48		98	10,950
Other Recognised Gain/Losses					
Gross Transfer between Funds	(50)	(48)	98		
Net Incoming/Outgoing			98	98	10,950
Reconciliation of Funds					
Total Funds brought Forward	10,551		177,333	187,884	176,934
Total Funds carried Forward	10,551		177,431	187,982	187,884

(This is an extract from the full account approved by the Board of Directors.)

Definitions:

Unrestricted - Funds with flexibility within defined terms and conditions.

Restricted - Funds for specific pre-defined purpose.

Designated - Funds for a specific purpose as defined by the Board of Directors.



THANK
YOU
ART
SHAPE
FROM
JOT

MIAMI
CITY
DOLLA
GEMMA
My Best

help to my
ok up BSL
date with Ashle
Michael Jackson

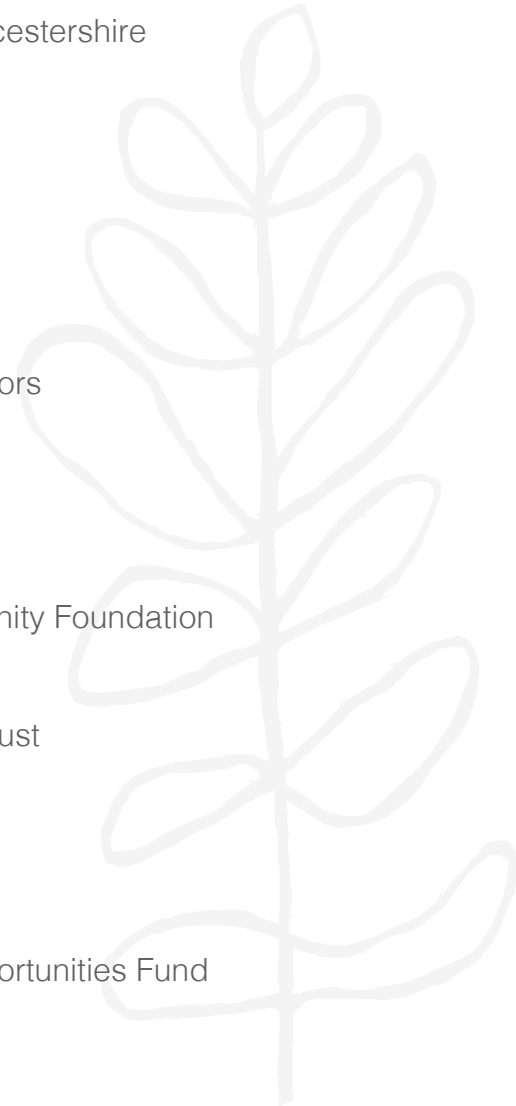
Art Shape would like to thank all its funders, customers and partners for their invaluable support, involvement and validation throughout the year:

Partners

2Gether NHS Trust
Adult Education in Gloucestershire
Age Concern
Arts Council England
Ashchurch View Care Home
BBC Radio Gloucester
Betaris Training
Bishops Cleeve Community Centre
Brockworth Community Centre
Brockworth House
Bromyard Housing Association
Candoco
Changing Creations
Charlton Kings Care Home
Cheltenham Borough Council
Cheltenham Museum and Gallery
Cinderford Artspace
DART Tewkesbury
Eastbrook AOC
Fairtrade Centre, Lydney
Five Ways Community Hall
Folk Museum, Gloucester
Foundation House
GANet (Gloucester Artists Network)
GARAS (Gloucestershire Action for Refugees and Asylum Seekers)
Glos Stroud Beresford Limited
Gloucester Cathedral
Gloucester City Farm
Gloucester Guildhall

Funders

Active Impact
Adult Education In Gloucestershire
Arts Council England
Barchester Foundation
Barnwood Trust
Café On The Green
Charles Irving Trust
Cox and Hodgetts Solicitors
Create Gloucestershire
Freemason's Trust
Garfield Weston
Gloucestershire Community Foundation
Going The Extra Mile
Government Gateway Trust
Hobson Charity Ltd
Langtree Trust
Leonard Cheshire
Nat West Skills and Opportunities Fund
NHS Gloucestershire
People's Health Trust
Rotary Club
Souter Charitable Trust
Summerfield Trust
Zurich



Art Shape
Brockworth Court Farm
Court Road
Brockworth
Gloucester
GL3 4QU

01452 863855
info@artshape.co.uk
www.artshape.co.uk



www.facebook.com/artshape



@artshape



@artshape_glos