

# ART SHape

Art Without Barriers



Annual report 20/22



# Contents

|   |         |
|---|---------|
| About Art Shape                             | 1 - 2   |
| Chair's report                              | 3 - 4   |
| Adult Education                             | 5 - 10  |
| Arts in Health                              | 11 - 17 |
| Radio Art Shape                             | 18      |
| Going the Extra Mile                        | 19 - 20 |
| VIA   | 21 - 22 |
| Re-Storying Landscapes for Social Inclusion | 23 - 24 |
| Of Course We Can                            | 25      |
| HAF / HAP Programme                         | 26      |
| The Open Road Carnival Project              | 27 - 28 |
| Artist Collaboration                        | 29      |
| Volunteering at Art Shape                   | 30      |
| Create and Connect                          | 31 - 32 |
| Partner Us / Support Our Work               | 33 - 34 |
| Thanks - Artists and Trustees               | 35      |
| The Art Shape team                          | 36      |
| Financial Figures                           | 37      |
| Partners and Funders                        | 38      |





# About Art Shape

**Art Shape** was established in 1992 and through work with individuals, groups, communities, organisations and partners has made significant steps in promoting everyone's right to creative experience and transforming the arts landscape across Gloucestershire.

Art Shape's vision is that all people can choose to engage with the arts as equals.



## Our Mission

We are working to **combat exclusion** from the arts with particular focus on working with **adults facing disabling barriers**.

We are driving social change by informing policy through research, identifying gaps in arts provision and stimulating the development of new possibilities in the arts.

We believe in the **power of the arts to change lives and improve health and wellbeing**. We are committed to creativity and imagination, equality and access.

We recognise individual value and worth built on **mutual respect, warmth and integrity**.



Illustration by Art Shape volunteer Sherina Steele  
@sherinasteelart

# Chair's report

## It is with great pleasure that I present this report for 2021-2022.

Firstly, I would like to thank the staff of Art Shape and its associated artists, teachers and supporters for their unstinting work to bring opportunities in the creative arts to the widest number of people facing disabling barriers in the county and beyond. Their success in this has been instrumental in attracting additional funding to the charity, in recognition of its diverse and successful delivery of programmes.

Secondly, I would like to thank my fellow Trustees. Art Shape has a strong board with many complementary skills and experiences, and together we are fully equipped to advise the Managing Director on the future direction of the charity. This year saw the resignation after many years of membership, of Pat Roberts and Hilary Paskins. The Board and Art Shape owe them an enormous debt of gratitude for their hard work and dedication to the objectives and staff of Art Shape.

At a time when funding for the charitable sector has become ever tighter, Art Shape is to be commended for increasing its turnover and core funding. There has also been an increase in the need for Art Shape's services due to the negative health impact the pandemic has had for people and this has also resulted in an increase in funding.

## Notable highlights of the year include:

We are working with children and young people living with long term health conditions such as persistent pain, epilepsy, PPS, type 1 diabetes and persistent physical symptoms, to aid self-management and boost wellbeing. This **arts and health social prescription work** is directly funded by the NHS and is delivered in partnership with Cinderford Artspace and The Music Works as a part of the Gloucestershire Creative Health Consortium.

We have worked in partnership with **Westonbirt Arboretum**, disabled artist Zoe Partington and the University of Exeter, on a programme entitled **Re-Storying The Landscape For Social Inclusion**. This new exhibition features a multi sensory experience through the trees of Westonbirt Arboretum, and aims to break down barriers to accessing and enjoying the arboretum for people facing disabling barriers.

The project also included a new sound installation by the renowned sound artist James Budley and sight-impaired sensory explorer Andy Shipley.

**Radio Art Shape** has been funded by GLOW Community Grants Gloucestershire Council to create an online Radio Show where our artist participants can blog about things that interest them as well as showcase their own work. We continue to be funded by **Adult Education** in Gloucestershire to deliver a large education programme using the arts as a vehicle for learning throughout the county. This includes Community Learning, First Steps and Employability courses as well as locally focused Flex programmes offering a wider learning experience and hence opportunity.

We have restarted our **Cheltenham Connection concerts** which had to cease temporarily during the pandemic restrictions, with a fantastic performance by Rockology in April.

We have continued our work with children and young people through our **Of Course We Can programme** and additional provision in parks and open areas funded through the Holiday Activities and Food programme.

We have continued our work with those with dementia and their families through our postal **Create and Connect programme**.

We have continued to facilitate the **Disability Advisory Board**, whose partners include Accessible Gloucestershire, Barnwood Trust, Cheltenham Festivals, Inclusion Glos, Create Glos, Gloucester Culture Trust, as well as Art Shape.

The Board facilitates dialogue and listening between disabled professionals and self-selected organisations delivering arts and / or disability inclusion services in Gloucestershire and to address needs identified by the partners.

This range of exciting programmes is only made possible by the dedicated work of the staff, tutors and assistants and my thanks go to you all.

*Catherine Coates.*



**Catherine Coates - Art Shape Chair**



# Adult Education

The last couple of years have been an interesting and challenging experience for both Art Shape and our learners. In the Spring Term of 2020 our programme was in full flow, with tutors delivering courses across Gloucestershire. We were working with learners in community hubs, care homes and drop in centres throughout the county, as well as delivering open courses that enabled learners from a range of settings to come together in central community buildings - forging friendships, learning new skills and connecting to their wider community.

This all changed on the 16th March 2020 when we took the decision to halt all face-to-face teaching and learning due to the COVID-19 pandemic. Some courses still had a number of weeks left to run so we very quickly adapted them to enable learners to complete their studies. Materials were posted out to learners, enabling them to complete their work and tutors corresponded with them via email or over the phone for the final few weeks of the Spring Term.

It was clear that all face-to-face learning would have to be suspended for the remainder of the 2019/20 academic year, and that we would have to develop a robust, yet flexible system of remote delivery to suit the wide and varied needs of our learners.



As a result, we developed three remote learning models.

- **Google Classrooms (online learning platform)**
- **Live Zoom sessions with supporting resource pack (posted)**
- **Postal Courses**

Hard copy and digital information packs were created to guide learners as they began to access and navigate their new remote learning platforms. Tutors were supported to adapt their approach for our new teaching and learning environments.



*“The courses offered through Art Shape have been a lifeline for me. I wonder if my sanity would have remained as intact as it was without it. I thought I’d lost all inspiration and desire during the first lockdown. I can’t begin to express my gratitude to you all. You are all doing a fantastic job despite the difficult circumstances you are all in.*”

*If materials don’t arrive quite in time, we’re artists and can be inventive and use something else. You, the rest of the staff there and in many other charities are the unsung heroes of this pandemic, keeping people’s mental, emotional and spiritual health going despite social isolation.”* – **participant**



## Adult Education

In November 2020 we were over the moon when Gemma Woods joined our small team, taking on the role of Education Assistant. Gemma's positivity and energy were most welcome! Learner feedback was extremely positive and our partner organisations were thrilled that their participants had been able to continue to access our provision. At one point we had almost 70 Cheltenham Borough Homes residents taking part in a postal Christmas Wreath making course.

During this time, we found that we were able to reach many new learners who due to health reasons would never have come to one of our classes in the community pre Covid. Our remote provision enabled them to get involved and meet other like-minded people with an interest in the arts.



*"Thank you Art Shape,  
you've made the lockdown inspiring and entertaining!"* - - **participant**

Although we continued to work remotely for the whole of the 2020/21 academic year, we knew that things would begin to open up at some point and that we would be able to return to our community classrooms. However, we knew that we would also continue to offer remote platforms that would give both our tutors and learners flexible ways to teach and learn. There is no doubt that this has been an extremely challenging time, however it has also created some incredible moments that have demonstrated the resilience and creativity of everyone involved.

A HUGE thank you to our wonderful tutors, assistants and volunteers for all of your hard work, to all of the families, carers, support teams and partners that have enabled learners to stay connected with us and of course, to our learners - you have been amazing!

We are looking forward to working with you all in our 2022/23 academic year.

**Nina Kirkwood**  
**Kate Townley**  
**Gemma Woods**





## Adult Education

### Some of the incredible moments on our Adult Education Courses March 2019-Aug 22:

#### Virtual Circus and Panto Pandemonium (SHOWTIME)

Two shows devised and performed on Zoom by learners on our SHOWTIME course during Lockdown 1 and 2.

#### This is Me (VIA Dance)

A show devised and performed by learners on Zoom. This dance show explored feelings of isolation brought about by the pandemic and a need to express individuality.

#### Hope - an online exhibition (Employability Exhibition Skills course)

The aim of this exhibition was to 'shine a light along the path to freedom as we slowly emerge from a winter of being locked down.' It was an optimistic and positive exhibition exploring unity, renewal, resilience and new life. It included symbols of hope as interpreted by the artists whose work was diverse and thought provoking and included sculpture, digital and traditional art - all inspired by the theme HOPE.



**hope**  
is a verb and a noun

## Adult Education

### Keeping Safe in the Classroom Guide

Learners that took part in our Local Flex Community Safety course created artwork to illustrate a Keeping Safe in the Classroom Guide - compiled at the request of our wider community of learners. Many learners were nervous about returning to the classroom so we surveyed everyone to find out what measures would make them feel safe.

To enable them to return to the classroom, we created a handy guide that was made available to everyone, so that it was clear what to expect when they came back.

Artwork from remote courses across all of our Programmes.



*“Receiving the supply packages in the middle of lockdown was so touching. At a time where I felt so isolated and lacked purpose, it really boosted me up because I felt included and less alone. I cannot thank Art Shape enough!”*

**- participant**

*“I love getting the course packs, finding one of those on your doorstep is like having several birthdays.”*

**- participant**





# Arts in Health

## XPRES!

*'It is a lot of fun and I know I am not alone'*  
- participant

We co-develop and co-deliver Arts on Prescription sessions to help young people self-manage their long-term health conditions. This programme is produced in partnership with **Gloucestershire NHS Clinical Commissioning Group**, **Cinderford Artspace** (circus speciality for young people who face disabling barriers) and **The Music Works** (specialists in working with young people in challenging circumstances through music).

We have been delighted to continue our work with children and young people from 8-18 years of age that are diagnosed with a long-term health conditions. And to support them and their families through creative programmes commissioned by the NHS.

We now receive referrals for young people living with epilepsy, diabetes, persistent pain, physical symptoms, respiratory conditions, allergic conditions, chronic fatigue, cancer and ME. We have been working in this area since 2018 and it is such a ground-breaking and transformative strand of work that has resulted in many life-affirming outcomes for those taking part.

Ourselves and our partners devise programmes in consultation with the young people, their families and the NHS to maximise impact. Individual one to one work is also offered as well as group sessions. We offer a range of art activities, including painting, film and animation along with circus and music.

Xpres! sessions run throughout the year.



One of our sessions in the stunning Tithe Barn



Summer school 'Blackfriars Buzz' at Blackfriars in Gloucester July 2021



## Arts in Health - XPRES

*“My daughter has loved it. It has helped with so many things. Her confidence is coming back and it is helping her to come to terms with her condition. It’s given her space and time to reflect and be creative for herself within a group of people that give her empathy, compassion and understanding. She has also been able to learn that others experience similar worries and challenges that she does too, knowing that you are not alone with this condition must mean so much to a child.”*

**- parent**



Here is a wonderful photo taken by one of our young people with his drone. He has continued to come to the sessions as a buddy supporting the sessions and is developing his photography and film skills towards having a career in this area.





## The Virtual Circus!

During the lockdowns the Xpres! sessions went online. A whole programme of different workshops, circus, dance, mask making, animation and singing was offered on zoom between April and June 2020. Each young person was allocated their own artist mentor to help them develop their interests and creative goals towards creating their own act.

Videos, demonstrations and activities were uploaded to online platforms (onto Facebook and Padlet) to support the programme. Both ourselves and **Cinderford Artspace** delivered one to one sessions and in addition **Cinderford Artspace** loaned participants circus equipment. At the end of the programme there was an online performance for all the participants' families and some of the commissioners and clinicians came too. It was a huge success!



## Nature in Art

Celebrating the work of our young artists is very important.

Nature in Art kindly hosted a fantastic evening in July 2021 where all the families came to a sharing of everyone's amazing creativity.

**Cinderford Artspace** provided circus activities, we watched a film with footage from all the previous sessions and then ate pizza amongst the sculptures in the sunshine.



One of the beautiful sculptures at Nature in Art

*"We would like to thank you, TS cannot believe she was brave enough to do the performance. What a difference you've made to our little girl."*  
- **(Feedback from parent about a one to one session as part of the Virtual Circus)**

*"Just wanted to say thank you so much for the invitation to the performance on Friday night, it was absolutely fantastic! Such great talent and all without any IT problems."*

*You could really see how much each of the young people had rehearsed and how brave they were for showcasing their talents."*  
- **Clinician**



## Studio sessions

As part of the main Xpres! programme, we started Studio Sessions in Summer 2021. These informal sessions are for young people with a health barrier to come together and make work, collaborate, bring work to share and generally hang out in the Art Shape studio.

Studio Sessions are set up as an additional pathway for Xpres! participants to engage in smaller groups.



Collaborating on a large painting in the studio

Illustration by Art Shape volunteer Sherina Steele  
@sherinasteelart

## Radio Art Shape

Art Shape teamed up with Bridge Training and **The Music Works** to teach a group of young people to podcast, they chose to talk about music, pop culture and film and learnt editing and recording skills.

This is just the beginning of Radio Art Shape as we have purchased podcasting equipment to do on location recording and will be working with more young people and **The Music Works** again over the next couple of years.

*“My application to Disability Arts Online for a Covid Commission was successful. I achieved this because of The Emerging Artists course.” - participant*

*“We cannot thank you enough for the hard work that [you] have done during this time, to give [him] something to look forward to each week.” - participant*

*“You are doing a fantastic job with the quantity and quality of the courses that you offer-they make such a big difference to my well being.” - participant*



# Going the Extra Mile (GEM)

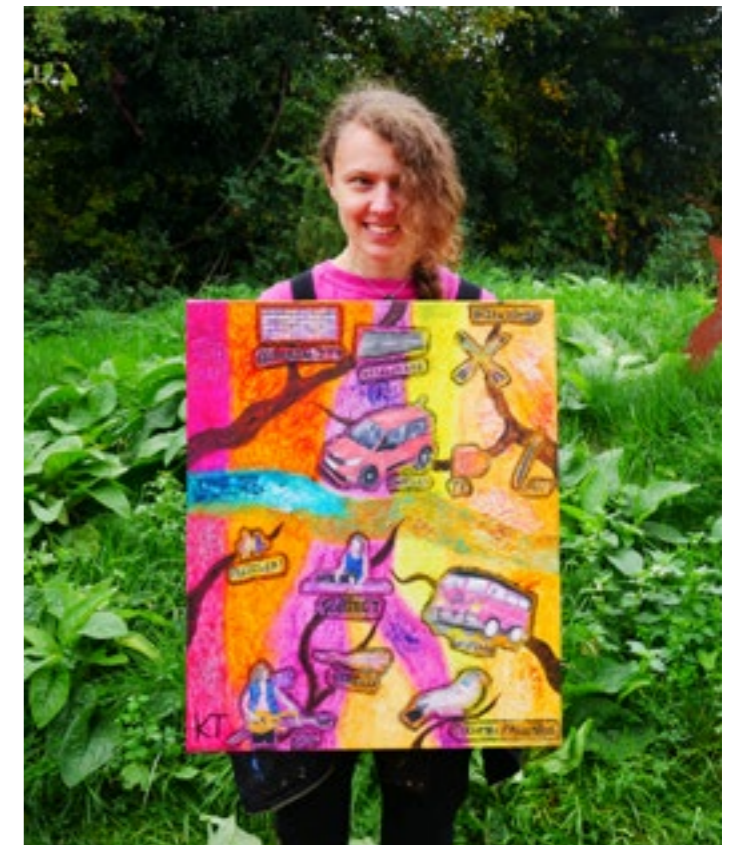
GEM continues to work alongside Art Shape to support individuals with barriers to work to get closer to their employment goals. We have supported these individuals to become self-employed artists, selling their prints, paintings and crafts in their online shops and have three more fledgling business owners that we are currently supporting. The individuals that we have supported use art as their main well-being tool and working in a conventional employed environment would be a challenge due to their fluctuations in physical and mental health.

These individuals are now able to plan their work schedules around their health needs and earn an income from their skills and sharing their creativity with the world. Art Shape's Navigator Developer has been running some online courses for GEM participants based on using creativity to support well-being. These groups have been well received and have had a direct impact on supporting individuals on GEM to develop new hobbies, explore emotions, use creativity as a stress busting tool and make valued connections with other participants.



GEM has also been working as a next stage for those individuals who have been through Artlift programs and feel ready to take the next step.

Referrals from **Artlift** tutors and positive connections with social prescribers have increased since the pandemic and this is an exciting step towards the holistic support that Art Shape have always advocated.





# VIA

VIA is an inclusive, intergenerational, community dance company which consists of wheelchair users, learning disabled and non-disabled dancers.

VIA was started over 10 years ago by GDance and still contains some original members who love coming to the inclusive group. Karen Perrins leads VIA and is proud to be their choreographer and Artistic Director, she has a passion for Inclusive Dance coupled with a desire to promote inclusivity within the dance and arts sector.

VIA love to perform and took part in the **Stroud Theatre Festival** in September. Here they performed a piece titled 'Circle of Life', devised by the group over lockdown. This colourful performance touched on issues important to the dancers which included mental wellbeing during lockdown and the current climate crisis.

VIA have previously performed at **Gloucester Cathedral** and been featured on broadcasts such as "The Strictly" live on BBC's The One Show and BBC's 'A Life Without Downs'.

VIA is about everyone being able to participate in dance and enjoy being part of a group, they welcome new members so please get in touch with [gemma@artshape.co.uk](mailto:gemma@artshape.co.uk) to find out more.





# Re-Storying Landscapes for Social Inclusion

Art Shape were lucky to be partners in a joint project with Westonbirt Arboretum, the 'Unlocking Landscapes' Network and 'Re-Storying Landscapes for Social Inclusion' project.

Led by Dr Clare Hickman (Newcastle University) and Dr Sarah Bell (University of Exeter), the Unlocking Landscapes Network has been exploring opportunities to complement UK landscape decision-making approaches that foreground biodiversity with a focus on human diversity.

Inspired by early network discussions, 'Re-Storying Landscapes for Social Inclusion' was a collaboration between Westonbirt Arboretum, Zoe Partington, Andy Shipley and Art Shape, led by the **University of Exeter**.

Through a range of innovative activities at **Westonbirt Arboretum** over 2021/2, the project explored and created new opportunities to convey the diverse sensory landscapes and histories of **Westonbirt Arboretum**.

The overall aim of this work was to demonstrate the value of moving away from framing disability as an 'access need', recognising it instead as a rich opportunity for creativity and shared learning. There was a fabulous exhibition with 6 Art Shape artists, curated by lead artist Zoe Partington, and a 2 day conference where key learnings from across the two projects were showcased and opportunities to inspire and enable similar initiatives elsewhere were shared.





# Of Course We Can

Art Shape have continued to work with Active Impact to offer inclusive holiday activities for young people with and without disabilities. Our latest offering was Game Master Games where young people joined us for a week of stop frame animation and escape rooming, generously funded by **Glos Disability Association**. Previously we ran Carnival Capers where young people designed and made their own carnival costumes and performed a fabulous Carnavalesque show for friends and family.

School of Wizardry our residential at the beautiful Macaroni Woods explored all things magical. Our young people worked together to devise and record a short film about Hogwarts Alumni.

During lockdown we ran a really successful zoom based Animation Station and we are pleased to report that we will be continuing our Of Course We Can provision for the next few years.



# HAF /HAP programme

Art Shape has joined the HAF/HAP programme, this Holiday and Activity programme is funded by the **Department of Education** for those in reception to year 11. We have teamed up with Cheltenham Borough Homes to provide food and enrichment holiday activities in areas where they operate.

We started with some summer fun in 2021 and worked in Pittville Park Cheltenham, an event shelter was erected, clay models were made and flags and banners were printed; It felt very festive!

The Christmas holidays involved making gifts for family and friends with printed bags, tree decorations and special cards. We were lucky with the weather and managed to deliver sessions in St Paul's and in The Moors on their green space.

In the Easter holidays of course we had egg decorations and races and this summer we've stretched our programme to incorporate Oakley, The Moors and St Paul's. The young people are so full of energy and creativity, and have shown us their street and break dance skills, and spray painted fabulous pop up walls which made the most wonderful stop frame animations. We can't wait to see their giant walking Carnival figures in action.





# The Open Road Carnival Project

We were so disappointed that our Carnival 2020 plans were scuppered but with a little adapt and change we managed to take our Carnival Programme first online through a series of zoom dancing and making sessions then we found a window of opportunity in 2021 to have 2 weeks of Mas Camp at the **All Nations Club** and a pop up Carnival performance in Westgate Gloucester. We worked with international Carnival Artistic Director Manuela Benini, 3 professional disabled dancers and some of our local Gloucestershire talent too.

Our home grown Carnival artist, Harriet West, was thrilled to have mentoring from Ray Of Sunshine from **Sunshine Arts** - a renown Trinidadian costume artist well known at Notting Hill Carnival; together they made a bespoke Caribbean Queen costume for an electric wheel chair. This was worn by our board member Jo Callaghan who made the most beautiful Mother Earth, her and her team of climate protestors saw off The Midnight Robber and his team of wicked jab jabs. It was a fabulous performance and one that we would like to repeat.

This project was funded by the Arts Council, it was part of a national project headed up by **The New Carnival Company** from the Isle of Wight, aiming to influence policy and practice to make events and Carnivals more inclusive and feeding in to **The Association for Events Management Education (AEME)** conference in Brighton. The conference brought together academics and practitioners from around the globe to discuss social inequalities in carnivals, festivals and outdoor events.

Art Shape was invited to share their learning at conferences about inclusive Carnival practice at Southampton, Derby and Huddersfield.





# Collaboration

Carolyn and I first connected through an online Art Shape course where I asked Carolyn if she would be interested in trying some artistic collaborations. I'd seen her work on the online classroom and loved her style. Carolyn loves working with a wide variety of three-dimensional materials, the more unusual the better, and I make simple abstract art using colours, shapes and lines that I see around me. For our first collaborative project we decided that Carolyn would use one of my collages as a starting point, then reinterpret it as a large-scale mobile using mainly recycled materials.

We collaborated closely as the project developed with her sending me pictures as she worked on the piece. I really enjoyed seeing the various stages in real time, it made me feel part of the process to see my work gradually brought to life in a different way.

We would like to express our gratitude for the amazing variety of stimulating Art Shape courses that have inspired, challenged and supported our artistic development. I can't easily join in with Zoom or in-person events, but I'm looking to find ways I can work with other people. Carolyn struggles with mental health and low self-esteem, but she finds the Art Shape learning environment very empowering. *Now to the next project!*



by Mandy and Carolyn  
Work images included: Collage on paper 20cm x 20cm  
and mixed media mobile 1m x 1m

# Volunteering at Art Shape

Art Shape are lucky to have a fantastic team of volunteers who offer their free time to support our tutors/artists within our many courses, workshops and projects. These recent years may have put a temporary pause on our volunteer engagement, but we are so grateful that our dedicated volunteers have stayed with us throughout and are now beginning to return to work with us and our participants again - **Thank you!**

This year we have also reopened student placements and work experience opportunities, once again these have proved to be a wonderful short-term addition to our team. The students have worked in our office and in our sessions to gain experience through supporting the work that we do. We are continually looking to improve the opportunities that we offer in order to encourage more people to pursue careers in the arts.

**Art Shape are now a member of the online volunteering service Go Volunteer Glos**, this online platform allows local organisations to advertise a large variety of volunteer opportunities and reach a wider audience. Although we are fairly new to this service, we hope to be able to bring in new people to increase our pool of dedicated volunteers.

Volunteers are an integral part of what we do and we would not be able to support as many participants as we do without their time and commitment.

If you are interested in finding out more about volunteering with Art Shape please either ring the office or email [kate@artshape.co.uk](mailto:kate@artshape.co.uk).





# Create and Connect

The Art Shape Create and Connect programme is an art group for people living with dementia and their carers. The name Create and Connect was chosen by the group members. Prior to lockdown, sessions took place at the Gloucester Resource Centre, led by artist Alison Cockcroft and aided by assistant Karen Rose. We observed wonderful positive outcomes such as improved memory function, more positive outlook, improved concentration and increased enthusiasm.

The pandemic put our face to face sessions on hold but we quickly adapted our delivery to ensure we still reached everyone who wished to participate. We offered postal projects and one-to-one tuition over the phone and via email and provided packs of art materials for those who wanted them. We then developed online sessions in addition for those who preferred online delivery, again led by Alison Cockcroft.

We continue to liaise closely with the Alzheimer's Society and have recruited new participants by visiting their online memory café.

## A still life by Jeremy Jeffries

These online delivery sessions went very well, informal, light-hearted, enjoyable and afforded an opportunity for a good chat.

We had fun sharing our art with each other and trying out new art ideas.



We continue to have meetings with other organisations working with people living with dementia such as Creative Age and Mindsong in order to share practice and signpost to each other's provision.

Recently we provided a session for the Ageing Well group who kindly helped us in promoting the programme. This session was thoroughly enjoyed by all. We were also invited to provide some art sessions for the Memory Group at the Churn in Cirencester, again a good time was had by all and plenty of laughs, tea and cake!

For more information contact:  
[charlotte@artshape.co.uk](mailto:charlotte@artshape.co.uk) or  
telephone: 01452 863 855



Chris created this wonderful Create and Connect logo for our group during an online session.

*'I so look forward to each new session to see what new ideas and materials will be ready, waiting for me. And it is all such fun in this enjoyable mini-community.'*

**– participant**



# Partner Us

Together we can create exciting new business relationships which compliment shared values and benefit us both. Partnering with a charity is good for business.

## Here's why:

- It shows your commitment to the local community and the arts
- It shows you are an ethical company that likes to give something back
- It can raise your profile
- It can save you money
- It can creatively enhance your staff and workplace

## Art in the Workplace

### Art Shape's belief in the transformative power of art informs our approach towards the creation of art for public spaces

At Art Shape we believe in the power of arts to change lives and improve health and wellbeing; there is a growing body of evidence that agrees with us. Research has shown that art in the workplace increases productivity, engages and inspires staff and can address key challenges such as reducing stress, increasing creativity and encouraging expression of opinion.

We offer companies a variety of ways to harness the power of art in their environment and make a statement that reflects their character, ethos, values and spirit; after all a picture speaks a thousand words.



# Support Our Work

## Wellbeing at Work

### Art Shape is a charity with 30 year's experience of enhancing wellbeing through creativity.

There is growing evidence that staff wellbeing greatly impacts upon motivation and productivity and thus the success of your company. We offer training that is interactive and innovative to help a company feel better.

### Our training will help your workforce to:

- Develop their knowledge and understanding of their own wellbeing in the work environment
- Identify the practical and emotional challenges people face at work
- Discover ways in which they and the company can promote and enhance wellbeing in the workplace

## Disability Training

### Become a disability confident organisation

Did you know that three quarters of disabled people and their families have left a shop or business because of poor customer service or lack of disability awareness? The spending power of people with a disability is worth 212 billion pounds to our economy; this is known as the Purple Pound. A company which is not disability-aware risks losing a slice of this pie.

Art Shape offer innovative and interactive training that has supported a wide range of organisations to be more confident to serve those with a disability.





Art Shape recognises that its work could not, and would not, be successful without the support and involvement of many people and would like to thank everyone associated with the organisation for their enthusiasm and dedication.

These include:

## Trustees

Catherine Coates – Chair  
 Jo Callaghan  
 Hilary Paskins  
 Pat Roberts  
 Andy Carter  
 Jim Austin-Jones  
 David Finch  
 Antonia Noble  
 Cathy Gilmore-Griffiths  
 Jo Jackson  
 Skye Denno

*We would like to thank Hilary and Pat for their many years' service on the board and wish them the very best for their future ventures.*

## Artists

|                  |                 |
|------------------|-----------------|
| Zoe Partington   | Kat Purchase    |
| Karen Perrins    | Kate Townley    |
| Gemma Woods      | Amy Iles        |
| Alison Cockcroft | Amy Freeman     |
| Warren Day       | Claude McKenzie |
| Gemma Bolwell    | Georgie Lewis   |
| Bela Kielt       | Kat Purchase    |
| Nina Kirkwood    | Karen Perrins   |
| Harriet West     | Manuela Benini  |
| Lucy Gresley     | Annett Binns    |
| Charlotte Hawke  | Hearns Sebuado  |
| Jo Teague        | Suzie Birchwood |
| Kate Fellows     | Jürg Koch       |
|                  | Jim Brook       |

## Volunteers and Assitors

|                       |                   |
|-----------------------|-------------------|
| Karen Rose            | Nicola Hill       |
| Jackie Drinkwater     | Anthea Millier    |
| Gwilym Roberts        | Mary Furnival     |
| Sam Pope              | Niamh Makin       |
| Nirvana Warner-Hughes | Leah Waller       |
| Mathew Prewer         | Victoria Gabb     |
| Hazel Townley         | Emily Waterfield  |
| Cherry Lyne           | Martin Buckley    |
| Nikki Whiteley        | Adam Graham       |
| Milan Carney          | Carlie Griffiths  |
| Kelly Peattie         | Jyoti Felce       |
| Jo Tate               | Courtney Cipriani |
| Jag Mehta             | Bee Kirkwood      |
| Beverly Ayliffe       | Kate Trinder      |
| Viva O'Flynn          |                   |

## Kickstart Assistants

Mathew Prewer  
 Kate Trinder

# The Artshape Team



**Lucy Garrett**  
 Managing Director



**Hazel Godden**  
 Finance Manager



**Xanthe Wood**  
 Senior Project Manager



**Harriet West**  
 Senior Project Manager



**Nina Kirkwood**  
 Education Manager



**Donna Marshall**  
 GEM Navigator Developer



**Amy Iles**  
 Arts and Health Project Manager



**Kate Townley**  
 Deputy Education Manager



**Gemma Woods**  
 Education Administrator



**Charlotte Speke**  
 Arts and Health Administrator



**Carla Bull**  
 Design and Marketing



# Financial Figures

Statement of Financial Activities for Art Shape Ltd for the year ended March 2022

|  | Unrestricted Funds 2022 | Restricted Funds 2022 | Designated Funds 2022 | Total Funds 2022 | Total Funds 2021 |
|--|-------------------------|-----------------------|-----------------------|------------------|------------------|
| <b>Incoming resources</b>                            |                         |                       |                       |                  |                  |
| Voluntary Income                                     | 720                     |                       |                       | 720              | 901              |
| Investment income                                    | 1,935                   |                       |                       | 1,935            | 2,100            |
| <b>Incoming Resources from Charitable Activities</b> |                         |                       |                       |                  |                  |
| Grants and Contracts                                 | 95,919                  | 531,325               |                       | 627,244          | 774,117          |
| <b>Other Incoming Resources</b>                      |                         |                       |                       |                  |                  |
| Sundry Income  | 23,337                  |                       |                       | 23,337           | 9,736            |
| <b>Total Income</b>                                  | <b>121,911</b>          | <b>531,325</b>        |                       | <b>653,236</b>   | <b>786,854</b>   |
| <b>Cost of Generating Funds</b>                      |                         |                       |                       |                  |                  |
| Unallocated Operating Costs                          | 84,761                  |                       |                       | 84,761           | 71,771           |
| Charitable Activities                                |                         | 535,411               |                       | 535,411          | 629,823          |
| Governance Costs                                     | 9,608                   |                       |                       | 9,608            | 6,674            |
| <b>Total Costs</b>                                   | <b>94,369</b>           | <b>535,411</b>        |                       | <b>629,780</b>   | <b>708,268</b>   |
| Resources before Transfers                           | 27,542                  | -4,086                |                       | 23,456           | 78,586           |
| Other Recognised Gain/Losses                         | -                       | -                     |                       | -                |                  |
| Gross Transfer between Funds                         | -23,871                 | 4,086                 | 19,785                | -                |                  |
| <b>Total Funds brought Forward</b>                   | <b>10,551</b>           | <b>-</b>              | <b>275,431</b>        | <b>285,982</b>   | <b>207,396</b>   |
| <b>Total Funds carried Forward</b>                   | <b>14,222</b>           | <b>-</b>              | <b>295,216</b>        | <b>309,438</b>   | <b>285,982</b>   |

Art Shape would like to thank all its funders, customers and partners for their invaluable support, involvement and validation throughout the year:

## Partners

2Gether NHS Trust  
 Adult Education in Gloucestershire  
 Age Concern  
 Arts Council England  
 Ashchurch View Care Home  
 Art Lift  
 AEME (Association of Events Management Education)  
 BBC Radio Gloucester  
 Betaris Training  
 Bishops Cleeve Community Centre  
 Bridge Training  
 Brockworth Community Centre  
 Brockworth House  
 Bromyard Housing Association  
 Candoco  
 Callaloo Carnival  
 Changing Creations  
 Charlton Kings Care Home  
 Cheltenham Borough Council  
 Cheltenham Borough Homes  
 The Wilson  
 Cinderford Artspace  
 DART Tewkesbury  
 Derby City Arts  
 Disability Arts Online  
 DASH  
 Exeter University  
 EMCCAN  
 New Carnival Company  
 Cando  
 Fairtrade Centre, Lydney  
 Five Ways Community Hall  
 Folk Museum, Gloucester  
 GARAS (Gloucestershire Action for Refugees and Asylum Seekers)  
 Gloucester Cathedral  
 Gloucester City Farm Gloucester Guildhall  
 Gloucester Services  
 Inclusion Glos  
 All Nations Community Centre  
 Diverse City  
 Gloucester Heritage Hub  
 The Independence Trust  
 Gloucester History Festival

## Funders

Active Impact  
 Adult Education In Gloucestershire  
 Arts Council England  
 Barchester Foundation  
 Barnwood Trust  
 Café On The Green  
 Charles Irving Trust  
 Cox and Hodgetts Solicitors  
 Create Gloucestershire  
 Freemasons Trust  
 Garfield Weston  
 Gloucestershire Community Foundation  
 Going The Extra Mile  
 Government Gateway Trust  
 Hobson Charity Ltd  
 Langtree Trust  
 Leonard Cheshire  
 Nat West Skills and Opportunities Fund  
 NHS Gloucestershire  
 People's Health Trust  
 Rotary Club  
 Souter Charitable Trust  
 Summerfield Trust  
 Zurich





*“Thank you for enabling me to participate. After a very long time, I now feel that I have a clear path back to creativity.”*

*“Art Shape has been a blessing for me. An access to my creative being, even when times are hard.”*





# ART SHape

Art Without Barriers

[www.artshape.co.uk](http://www.artshape.co.uk)



Art Shape  
Brockworth Court Farm  
Court Road  
Brockworth  
Gloucester  
GL3 4QU



[info@artshape.co.uk](mailto:info@artshape.co.uk)



01452 863855



[www.facebook.com/artshape](http://www.facebook.com/artshape)



[@artshape\\_glos](https://www.instagram.com/artshape_glos)



[@artshape](https://twitter.com/artshape)