

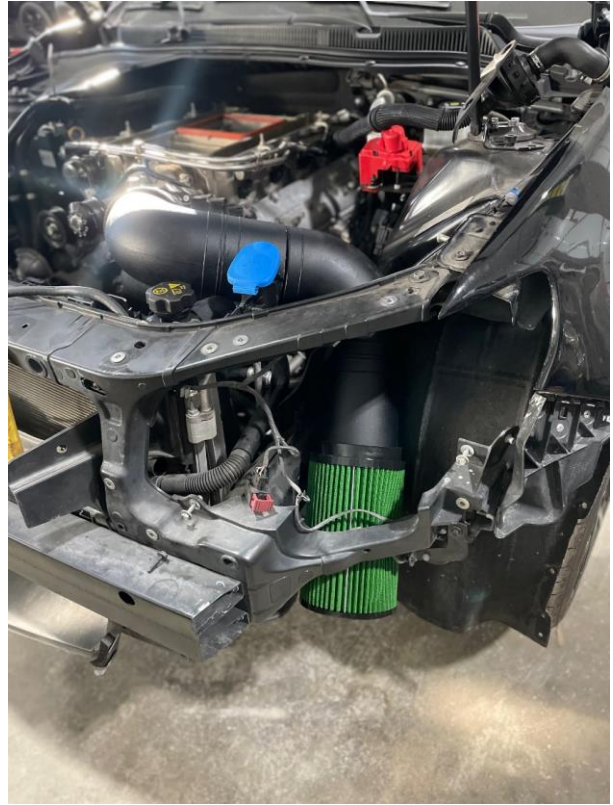


5" Fenderwell Intake for G8/SS with LSA Supercharger

Property of
Glanzer Performance



This kit comes complete with everything needed for install besides a LS7 MAF. Running this 5" intake is a tight fit so don't be alarmed on how tight it goes together.



Put the coupler 4" x 5" coupler on the elbow that has the MAF housing and air straightener on it.

Don't forget to put the clamps on it. DO NOT tighten them!





5" Fenderwell Intake for G8/SS with LSA Supercharger

Property of
Glanzer Performance



Install the elbow that you just installed the coupler on. Leave the clamps loose. It will be close and more than likely rest on the radiator hose.



Install the fenderwell cover. Depending on how everything lands you may have to modify the hole that is drilled in it.





5" Fenderwell Intake for G8/SS with LSA Supercharger

Property of Glanzer Performance

Install the other elbow. Slide it through the cover you installed.



The 5" x 5" coupler is not pictured.



Install the filter. Now you can either remove the bumper to do this or you can work through the Fenderwell cover and install it all at one time.

