

MICROSD BREAKOUT BOARD

SKU: ICB00415

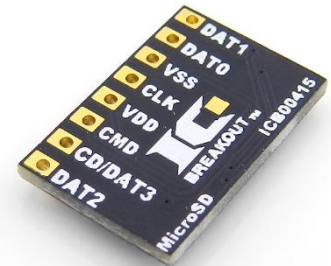


Description

The MicroSD breakout board is a DIP adapter for the MicroSD connector. This board has all of the support components to use a MicroSD card. You don't need to add any pull-up resistors or a power decoupling capacitor, it's already on the board for you! Also, the SD card hangs over for easy removal and insertion.

Technical Details

Footprint Dimensions	
Body (mm):	n/a
Pitch (mm):	n/a
Thermal Pad (mm):	n/a
Breakout Board Dimensions	
Board Dimensions (mil):	780 x 507
Board Thickness (mil):	62
Through-Hole Spacing (mil):	100 mil (X-axis)
	n/a (Y-axis)
Breakout Board Specifications	
Board Layers:	2
Finish:	Immersion Gold
Copper:	1 oz
Traces (mil)	10
Trace Lengths (mil):	<150
Pin/Through-Hole Count:	8



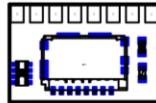
What's Included?

Parts Installed on Board:	MicroSD connector , 100k resistor array, .1uF capacitor, 100K resistor
Parts Included (but not installed):	60 PIN Break Away Header (Straight)

Additional Features

- Easily identifiable PIN 1 indicator and PIN numbers
- White silk "Label Pads" allow you to label the pins for quick reference
- Extended through-hole pads make for an easy connection point for surface mount parts
- Breadboard friendly pin spacing
- All boards have been E-tested for failures and are RoHS compliant

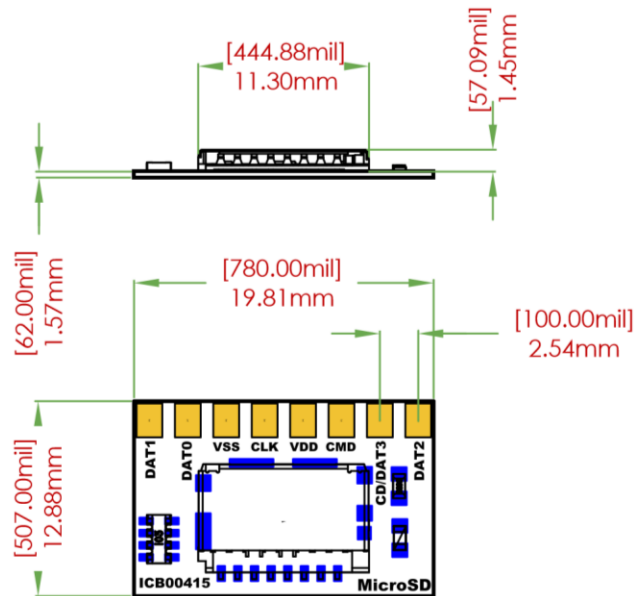
Scale Image



1:1 SCALE

(Print this page to use the scale image to test the fit of the electronic part.)

Dimensions



BREAKOUT BOARD DIMENSIONS