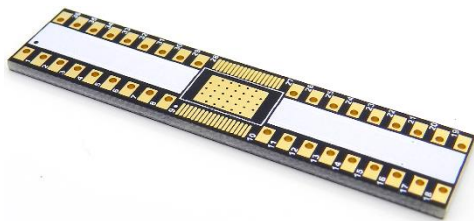


SSOP-36 BREAKOUT BOARD

(7.6 x 10.5 mm, 0.5 mm)

SKU: ICB00270

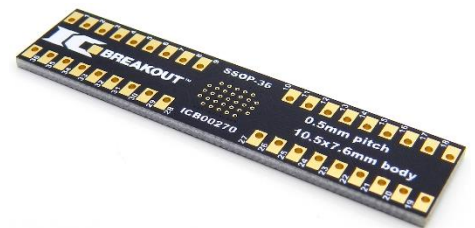
Description



This is a breakout board that was designed to be a DIP adapter for the SSOP-36 type SMD packages. Some of the SMD types that can be used with this board include: SOP, PSOP, TSOP, TSSOP 1, TSSOP 2, SSOP, MSOP, CSOP, EPTSSOP, HSOP, HTSSOP, QSOP, SOJ, BSOJ, TVSOP, VSSOP, VSP, VSO.

Technical Details

Footprint Dimensions	
Body (mm):	7.6 x 10.5
Pitch (mm):	0.5
Thermal Pad (mm):	5.2 x 7.5
Breakout Board Dimensions	
Board Dimensions (mil):	500 x 2200
Board Thickness (mil):	62
Through-Hole Spacing (mil):	300 mil (X-axis)
	100 mil (Y-axis)
Breakout Board Specifications	
Board Layers:	2
Finish:	Immersion Gold
Copper:	1 oz
Traces (mil)	10
Trace Lengths (mil):	<1000
Pin/Through-Hole Count:	36



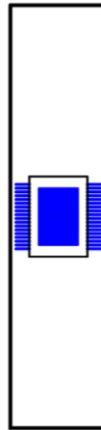
What's Included?

Parts Installed on Board:	None
Parts Included (but not installed):	36 PIN Break Away Header (Straight)

Additional Features

- Easily identifiable PIN 1 indicator and PIN numbers
- White silk "Label Pads" allow you to label the pins for quick reference
- Extended through-hole pads make for an easy connection point for surface mount parts
- Breadboard friendly pin spacing
- All boards have been E-tested for failures and are RoHS compliant

Scale Image



1:1 SCALE

(Print this page to use the scale image to test the fit of the electronic part.)

Dimensions

