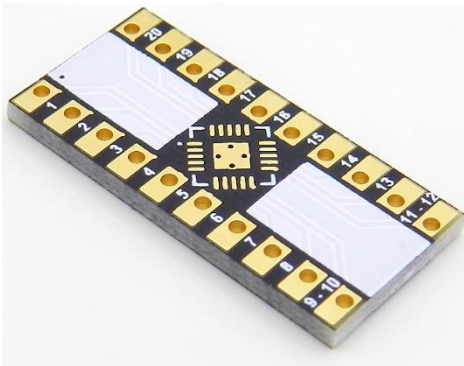


QFN-20 BREAKOUT BOARD

(4 x 4 mm, 0.5 mm)

SKU: ICB00250

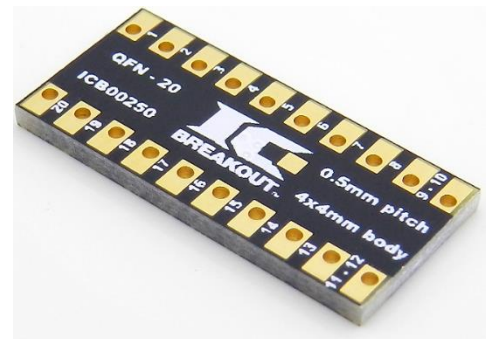


Description

This is a breakout board that was designed to be a DIP adapter for the QFN-20 type SMD packages. Some of the QFN types that can be used with this board include: QFN, QFN-TEP, DQFN, TQFN, VQFN, HUQFN, HVQFN, HWQFN, HXQFN, XQFN.

Technical Details

| Footprint Dimensions | |
|-------------------------------|------------------|
| Body (mm): | 4 x 4 |
| Pitch (mm): | 0.5 |
| Thermal Pad (mm): | 2 x 2 |
| Breakout Board Dimensions | |
| Board Dimensions (mil): | 450 x 980 |
| Board Thickness (mil): | 62 |
| Through-Hole Spacing (mil): | 300 mil (X-axis) |
| | 100 mil (Y-axis) |
| Breakout Board Specifications | |
| Board Layers: | 2 |
| Finish: | Immersion Gold |
| Copper: | 1 oz |
| Traces (mil) | 10 |
| Trace Lengths (mil): | <500 |
| Pin/Through-Hole Count: | 20 |



What's Included?

| | |
|--|--|
| Parts Installed on Board: | None |
| Parts Included (but not installed): | 20 PIN Break Away Header (Straight) |

Additional Features

- Easily identifiable PIN 1 indicator and PIN numbers
- White silk "Label Pads" allow you to label the pins for quick reference
- Extended through-hole pads make for an easy connection point for surface mount parts
- Breadboard friendly pin spacing
- All boards have been E-tested for failures and are RoHS compliant

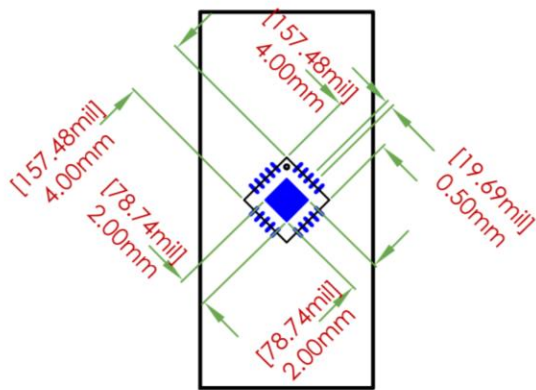
Scale Image



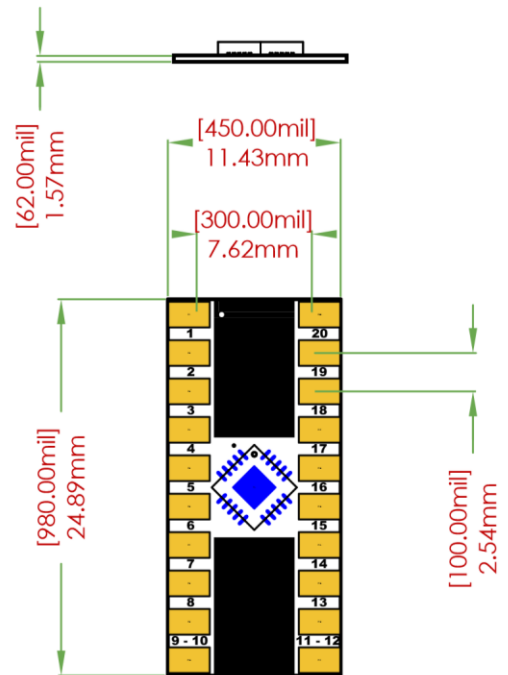
1:1 SCALE

(Print this page to use the scale image to test the fit of the electronic part.)

Dimensions



**FOOTPRINT
DIMENSIONS**



**BREAKOUT BOARD
DIMENSIONS**